

How to make a Tint Tone Shade Color Chart

CINNAMON COONEY · THURSDAY, MARCH 28, 2019

How to make a Tint , Tone, Shade Color Chart

Video is here. <https://www.youtube.com/watch?v=xNLH2byzCLc>



Artist have a few things they can do to make every part of their creative process faster and better. Create a habit of being creative, organize the studio, swatch and color chart their paints and art materials. This color chart not only shows the paints true color out of the tube but it also shows Mix's, tints, tones, and shades .

The benefits of this Chart Are

1. Save money
2. Understand my color and color in general
3. See values
4. Prevent confusion and frustration and feelings of Failure
5. Save time
6. Paint with Confidence

BENEFITS OF A TINT, TONE, SHADE COLOR CHART

#1 Save Money



#4 Prevent confusion and frustration



#2 Understand Color



#5 Save Time



#3 See value



#6 Paint with Confidence



Materials needed for this project

A surface to paint on. You can use any surface suitable to your paint to make a color chart .

Your selected palette of paints

A T Square Ruler

A sharp edge brush. I like 1/2 or smaller angle brush

A couple hours or more depending on how tidy you are and how many coats of paint you need.

Vocabulary needed for this project

Hue - Refers to the underlying Color Family Yellow, Orange, Red, Violet, Blue or Green



HUE:

Red, Yellow, Blue,
Green, Orange, Purple

Color - All the Hue's , white, black ,tints, tones, and shades



COLOR:

all hues, white, black,
nuetrals, tints, tones
and shades

Tint -Simply means to add white to a color -*(not to be confused with tinting strength of pigment which refers to how strongly one color can influence another color)*



TINT:

To add *White* to a Color

EXCEPT when you say Tinting strength



Not to be confused with the term
Tint in color mixing



The ***Tinting Strength*** of pigment here refers to how strongly one color can influence another color

Tone: When you Add Gray to a color. This can be done by adding pre mixed gray. This can be done by first adding white to a color and then Adding black or vice versa.



TONE:

To add Grey to a Color

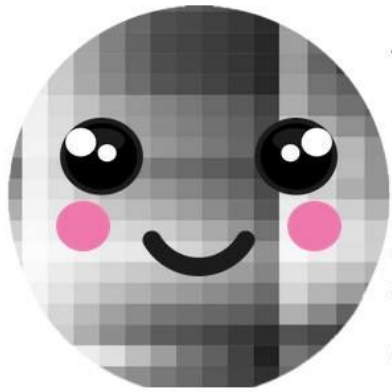
Shade - add black to a color



SHADE:

To add Black to a Color

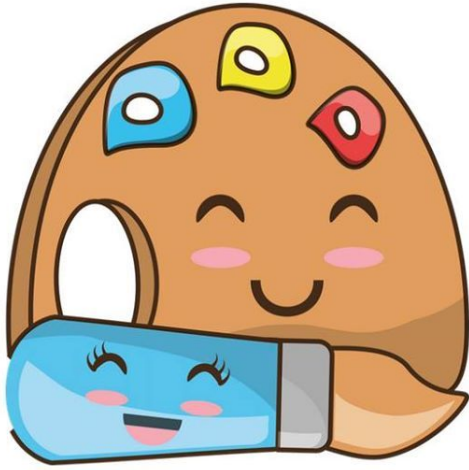
Value - how light or dark something is



VALUE:

how light or
dark something is

Color Pallet - The specific colors an artist plans to use



Artist pallet : here
we mean the specific
paint colors used .

*ALSO In art this can mean the
surface the paint its put on*

I will talk about the Ten colors I am using for Acrylic
April

567 Napes Yellow <https://amzn.to/2Ym57On>

541 Cadmium medium hue <https://amzn.to/2JCtogo>

674 Vermillion <https://amzn.to/2Tx88bo>671

deep Magenta <https://amzn.to/2JDJC8B>386

Primary Blue <https://amzn.to/2U7QKOt>314

Ultramarine blue <https://amzn.to/2HXSCtF>896

Phthalo green <https://amzn.to/2HGwb5J>211

Burnt Sienna <https://amzn.to/2HGws8L>759

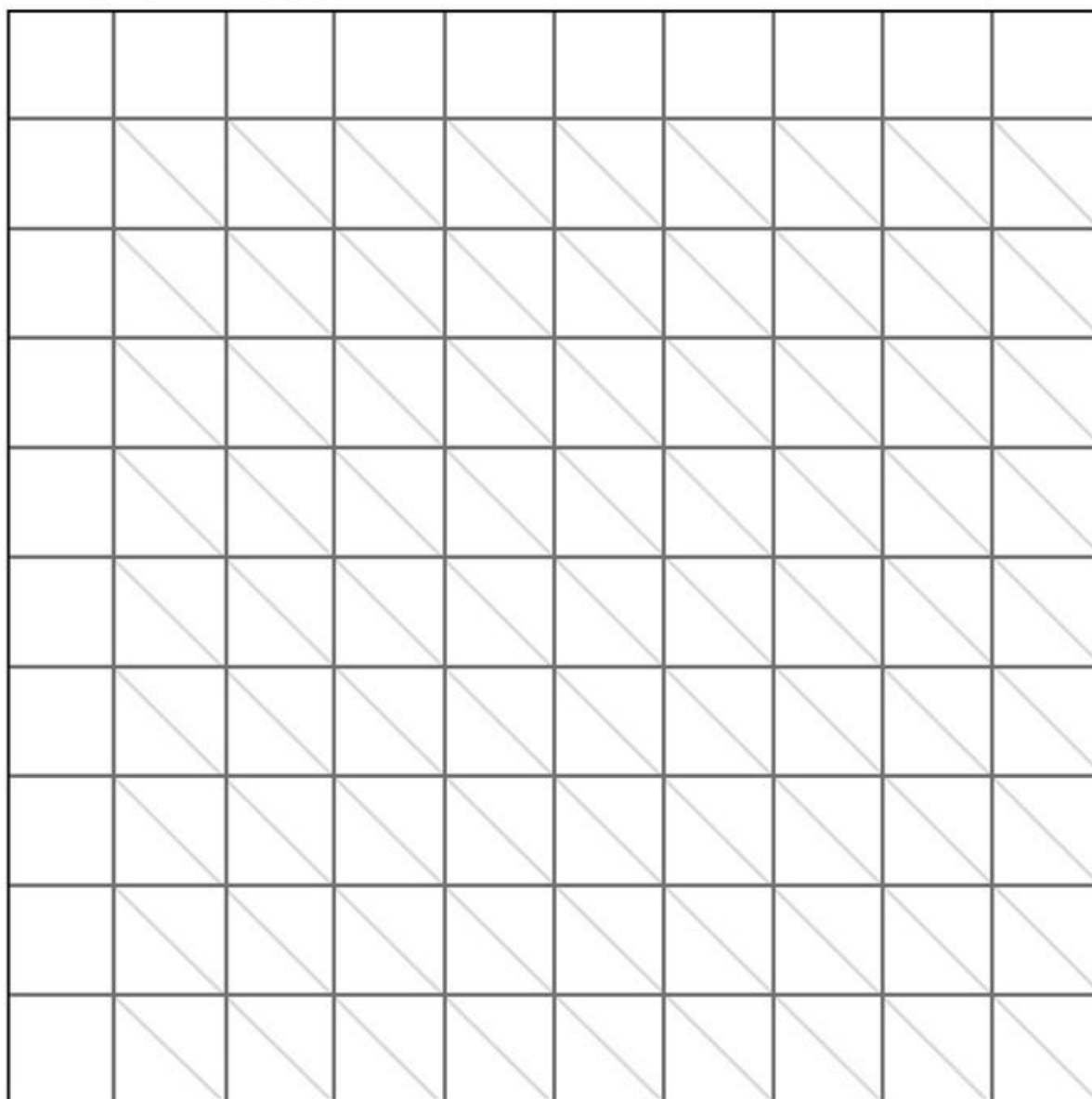
Mars Black <https://amzn.to/2HFpxgq>116

Titanium White <https://amzn.to/2HQQ2hV>

1. You can use this for any number of colors
2. Must include black and white
3. This is based on a square canvas.
4. The number of paints determines the size of the canvas
5. I used 1" as its easiest for me
6. You can make your own, on paper or canvas as you please
7. You can use one of the print on demand options
8. Free or t- spring either is fine but they are for a 10 color pallets



COLOR CHART



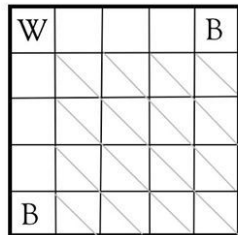
T-spring Store canvas print out

<https://teespring.com/diy-10-color-mixing-chart?tsmac=store&tsmic=the-art-sherpa#pid=583&cid=102495&sid=front>

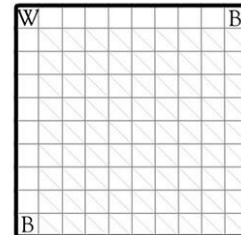
**A SQUARE CANVAS THE HEIGHT AND WIDTH OF
WHICH IS THE NUMBER OF PAINT COLORS YOU**

WILL BE USING

5x5



Including Black and White



10x10



1. Divide your square surface by one inch squares
2. Corner top left always white
3. Lower left and farmost upper right always black
4. Divide the diagonal Rows using a T-square or ruler

5. Leave the outer left and upper right

Measure a grid of one inch Squares

The number of Squares will be the number of colors in your pallet including black and white - I will demo 10

**ADD DIAGONAL LINES FROM THE UPPER LEFT TO LOWER RIGHT
LEAVING OUT THE OUTER ROWS AT
THE LEFT SIDE AND THE TOP**



TIP: USE A T-SQUARE TO MAKE YOUR LINES EASIER TO DRAW



I organized my paint by Value. That is how light or dark it is on the Grayscale

Value is the number one thing you can do to improve your paintings.

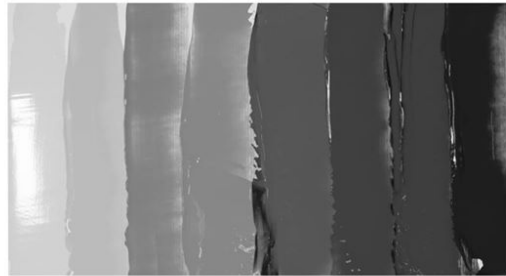
I used my photo editing software to desaturate the color to see the value



SOMETIMES VALUE
CAN BE HARD TO SEE
IN COLORS



VALUE: DESCRIBES
HOW
LIGHT OR DARK
SOMETHING IS

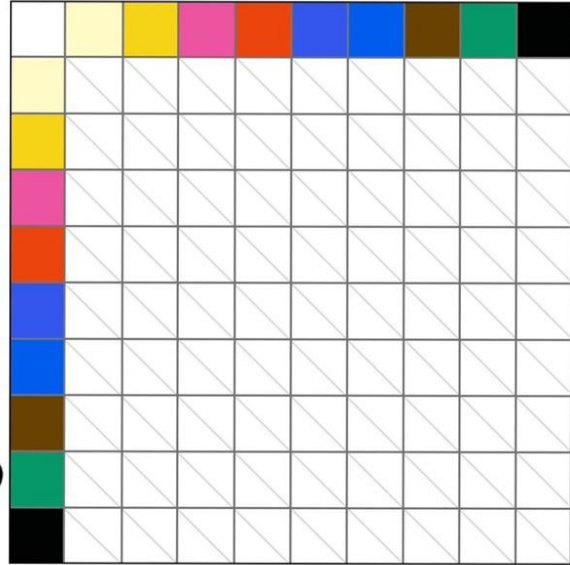
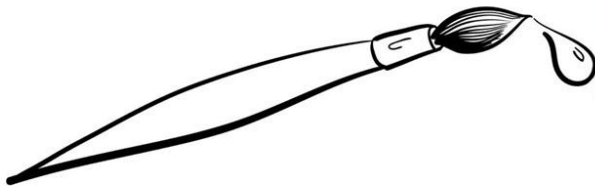


EASY IN GRAYSCALE

Paint in the Outer row

1. Two coats will make the whole chart
2. Should be dry between coats
3. Start at white Paint your lightest value from right to left Starting with White finishing with black
4. Repeat from top to bottom
5. For the entire process wash your brush out when you change colors and change your water often

Paint the Outer top and
Left Squares with pure paint
It can take two coats
Yes even the white square

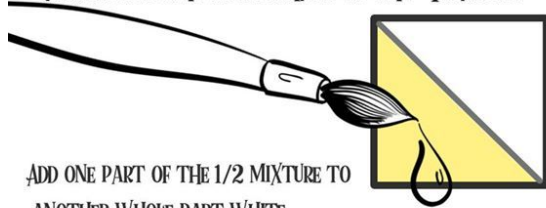


The Tint ROW Diagonal

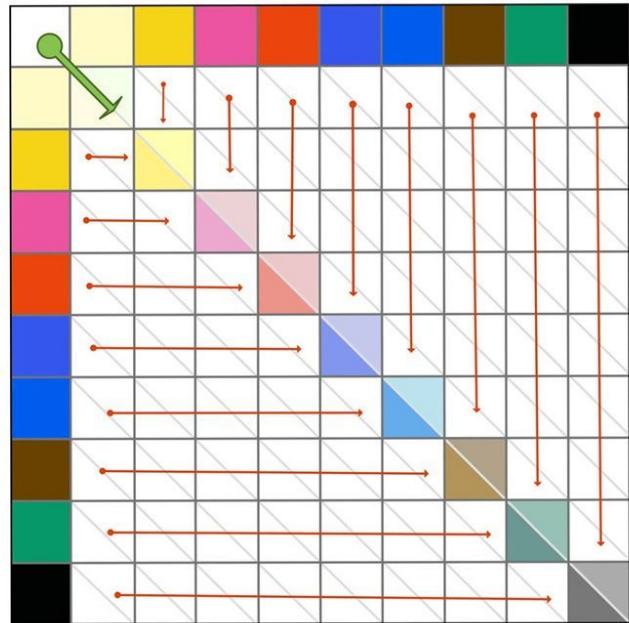
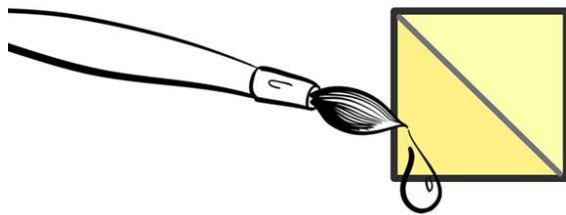
1. Starting at your lightest Hue Mix one part of each color to one part white
2. Paint the bottom half of the square with this 1 to 1 mixture
3. Take one part of the bottom Square Mixture and one part white again. Take this lighter vAlue and paint the top half of the Square
4. Repeat for each color in your pallet all the way across and down to the last square

THE DIAGONAL ROW

MIX 1 PART WHITE TO ONE PART COLOR
AND FILL IN THE LOWER HALF OF THE TRIANGLE



ADD ONE PART OF THE 1/2 MIXTURE TO
ANOTHER WHOLE PART WHITE
FILL IN THE UPPER HALF OF THE TRIANGLE



THE FIRST COLOR ROW

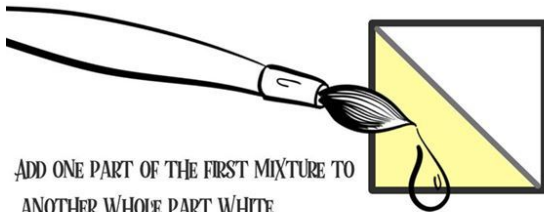
I call this row one BECAUSE it is the first mix horizontal row of our outer colors

1. STARTING FROM right to left beginning at the first Square
2. Mix 2 parts of the left color to one part of the Top Row Color (except for the black top row.)
3. Paint this mix into the lower half of the diagonal
4. Add one part of the mix to one part of the white to tint your mixture
5. Do this UNTIL you get to the black square at the top right.
6. Mix 2 parts of the left row color to $\frac{1}{2}$ part of your black. This is your Shade color

- Mix 1 part of your shade color to one part of your white (this is your Tone color

FIRST HORIZONTAL ROW

MIX 2 PARTS OF THE LEFT ROW COLOR
TO ONE PART OF THE TOP ROW COLOR
AND FILL IN THE LOWER HALF OF THE TRIANGLE



ADD ONE PART OF THE FIRST MIXTURE TO
ANOTHER WHOLE PART WHITE
FILL UN THE UPPER HALF OF THE TRIANGLE



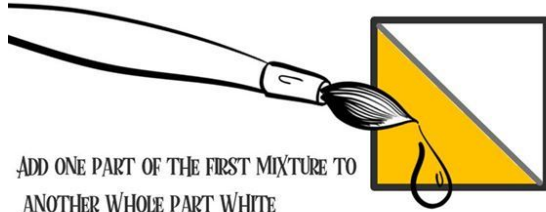
CONTINUE LEFT TO RIGHT
FOR THE WHOLE ROW

1 part	1 part	1 part	1 part	1 part	1 part	1 part	1 part	1 part	1/2 part
2 parts									
2 parts									
2 parts									
2 parts									
2 parts									
2 parts									
2 parts									
2 parts									
1 part									

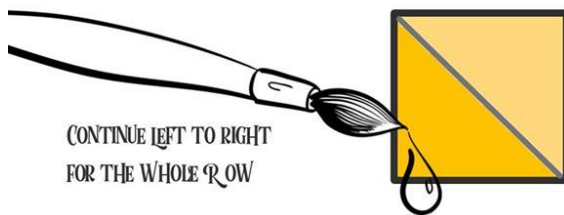
Get a clean brush or WASH your brush, check the room on your mixing surface
and Change Water

2ND HORIZONTAL ROW

MIX 2 PARTS OF THE LEFT ROW COLOR
TO ONE PART OF THE TOP ROW COLOR
AND FILL IN THE LOWER HALF OF THE TRIANGLE



ADD ONE PART OF THE FIRST MIXTURE TO
ANOTHER WHOLE PART WHITE
FILL UN THE UPPER HALF OF THE TRIANGLE



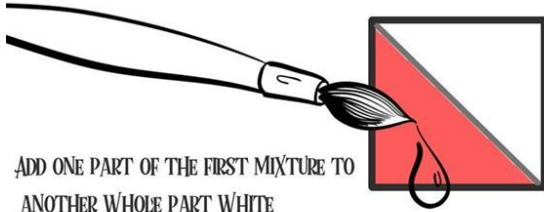
CONTINUE LEFT TO RIGHT
FOR THE WHOLE ROW

1 part	1 part	1 part	1 part	1 part	1 part	1 part	1 part	1 part	1/2 part
2 parts									
2 parts									
2 parts									
2 parts									
2 parts									
2 parts									
2 parts									
2 parts									
2 parts									
1 part									

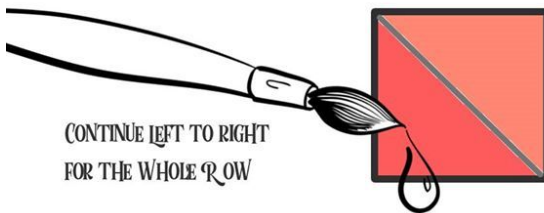
Get a clean brush or WASH your brush, check the room on your mixing surface
and Change Water

4TH HORIZONTAL ROW

MIX 2 PARTS OF THE LEFT ROW COLOR
TO ONE PART OF THE TOP ROW COLOR
AND FILL IN THE LOWER HALF OF THE TRIANGLE



ADD ONE PART OF THE FIRST MIXTURE TO
ANOTHER WHOLE PART WHITE
FILL UN THE UPPER HALF OF THE TRIANGLE

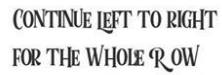
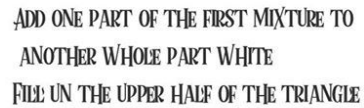


CONTINUE LEFT TO RIGHT
FOR THE WHOLE ROW

1 part	1 part	1 part	1 part	1 part	1 part	1 part	1 part	1 part	1/2 part
2 parts									
2 parts									
2 parts									
2 parts									
2 parts									
2 parts									
2 parts									
2 parts									
2 parts									
2 parts									
2 parts									
2 parts									
2 parts									
1 part									

Get a clean brush or WASH your brush, check the room on your mixing surface
and Change Water

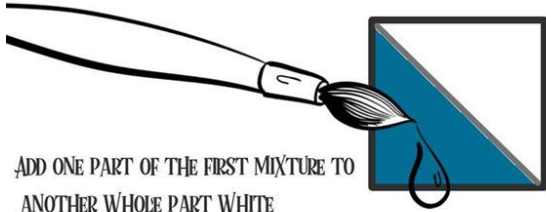
MIX 2 PARTS OF THE LEFT ROW COLOR
TO ONE PART OF THE TOP ROW COLOR
AND FILL IN THE LOWER HALF OF THE TRIANGLE



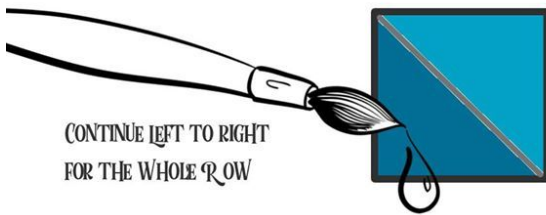
Get a clean brush or WASH your brush, check the room on your mixing surface and Change Water

6TH HORIZONTAL ROW

MIX 2 PARTS OF THE LEFT ROW COLOR
TO ONE PART OF THE TOP ROW COLOR
AND FILL IN THE LOWER HALF OF THE TRIANGLE



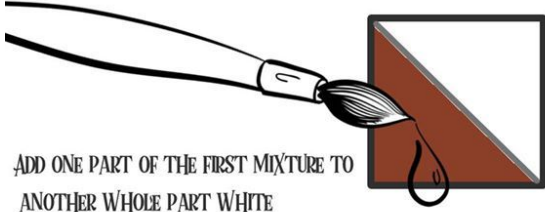
ADD ONE PART OF THE FIRST MIXTURE TO
ANOTHER WHOLE PART WHITE
FILL UN THE UPPER HALF OF THE TRIANGLE



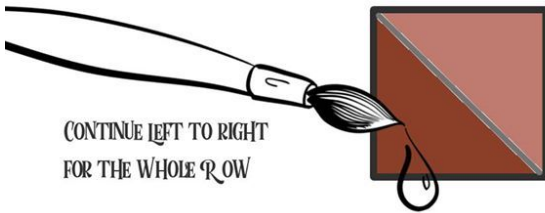
CONTINUE LEFT TO RIGHT
FOR THE WHOLE ROW

7TH HORIZONTAL ROW

MIX 2 PARTS OF THE LEFT ROW COLOR
TO ONE PART OF THE TOP ROW COLOR
AND FILL IN THE LOWER HALF OF THE TRIANGLE



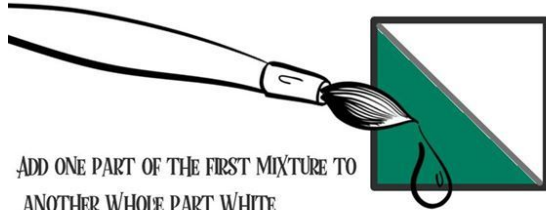
ADD ONE PART OF THE FIRST MIXTURE TO
ANOTHER WHOLE PART WHITE
FILL UN THE UPPER HALF OF THE TRIANGLE



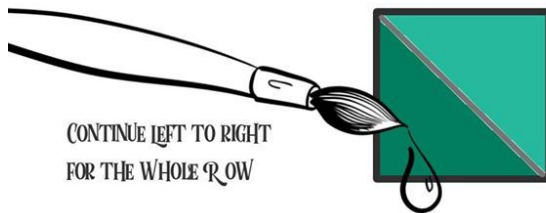
CONTINUE LEFT TO RIGHT
FOR THE WHOLE ROW

8TH HORIZONTAL ROW

MIX 2 PARTS OF THE LEFT ROW COLOR
TO ONE PART OF THE TOP ROW COLOR
AND FILL IN THE LOWER HALF OF THE TRIANGLE



ADD ONE PART OF THE FIRST MIXTURE TO
ANOTHER WHOLE PART WHITE
FILL UN THE UPPER HALF OF THE TRIANGLE



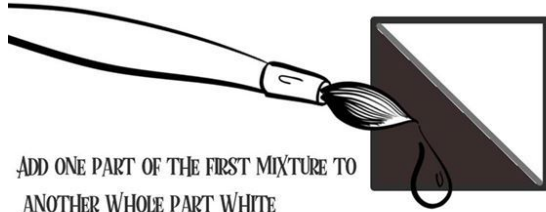
CONTINUE LEFT TO RIGHT
FOR THE WHOLE ROW

1 part	1 part	1 part	1 part	1 part	1 part	1 part	1 part	1 part	1/2 part
2 parts									
2 parts									
2 parts									
2 parts									
2 parts									
2 parts									
2 parts									
2 parts									
2 parts									
1 part									

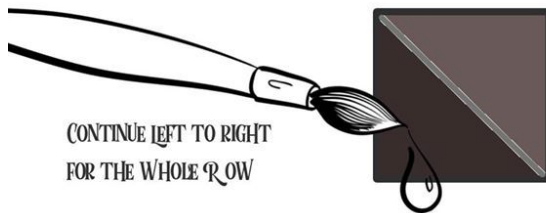
Get a clean brush or WASH your brush, check the room on your mixing surface
and Change Water

9TH HORIZONTAL ROW

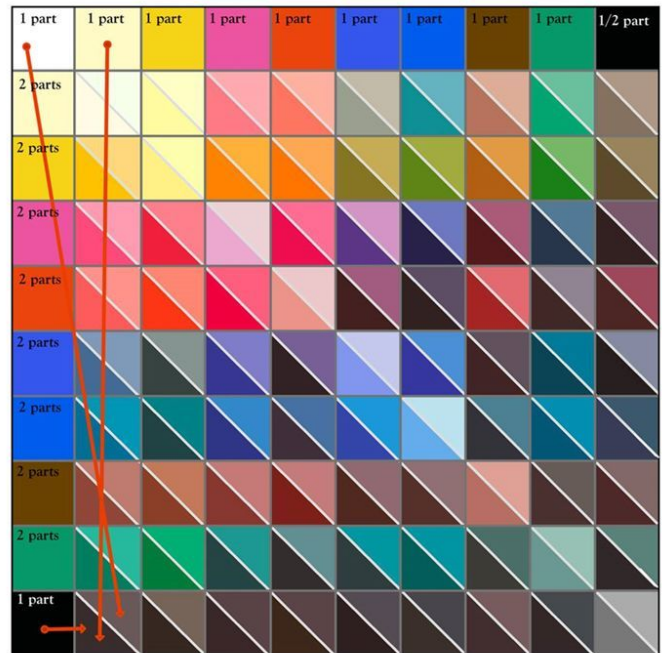
MIX 2 PARTS OF THE LEFT ROW COLOR
TO ONE PART OF THE TOP ROW COLOR
AND FILL IN THE LOWER HALF OF THE TRIANGLE



ADD ONE PART OF THE FIRST MIXTURE TO
ANOTHER WHOLE PART WHITE
FILL UN THE UPPER HALF OF THE TRIANGLE



CONTINUE LEFT TO RIGHT
FOR THE WHOLE ROW



To read Your finish color chart

Look to the color you want to make. Find the pure pigment color Straight above it
and to the left of it

Now you know how to create EVERY color on the chart BUT you know some
other cool things

TINT

YOU CAN NOW SEE YOUR TINTS, TONES, AND SHADES

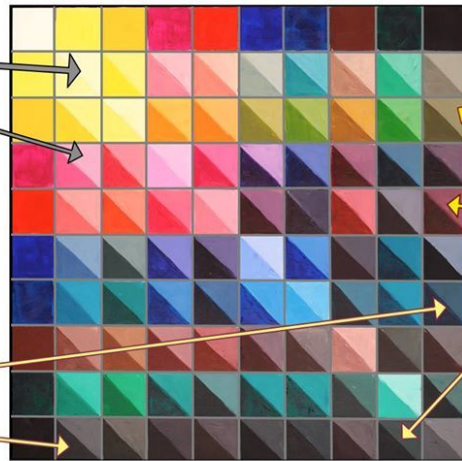


Adding just
white to a color.

SHADE



Adding just
Black to a color.



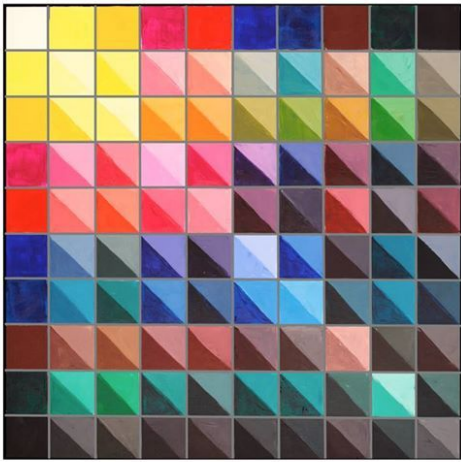
TONE



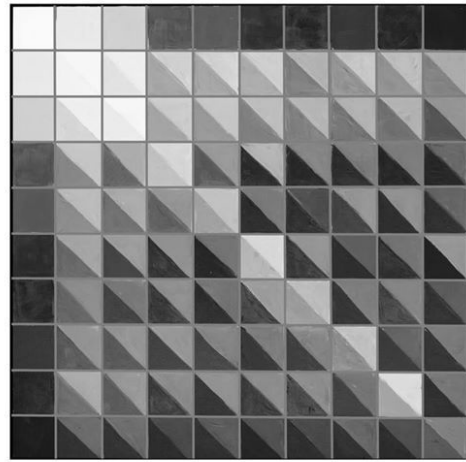
Adding
Gray to a color

You know The value of all of your color mixes

IN COLOR



GRAYSCALE



This will let you paint things like Green on Green and still keep an interesting value!!

Having trouble seeing the value past the color CHECK this out

Share your color Chart and enjoy your painting

If you thought this video was cool check out our Split primary video to learn the hidden secret of GREAT color!!



COLOR CHART

