

Mermaid

By The Art Sherpa

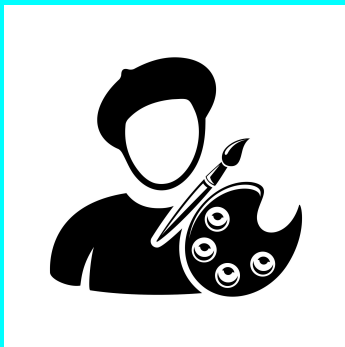
Mermaid ~ a woman who chooses imagination over fear.

Hi, I am the Art Sherpa,

This class will be about jumping in and finding new currents of imagination to swim in. Take this time, this class, and this year to explore the limits of your creativity in the safe living space that is Lifebook 2020. I am so glad to be sharing this Mermaid inspired art lesson with you, not only for the fun techniques you will learn, but because we can explore the dual nature of things. Whether it is the many natures of the sea, mermaid, acrylic paint or yourself. Let's dive deep!

It's Acrylic painted like Watercolor





Art Materials

Change Colors as needed •
don't let not having the exact
same art materials be a barrier
to your creative flow

Acrylic Heavy Body paint

- Titanium White
- Carbon Black
- Cad Yellow Medium
- Quinacridone Magenta
- Phthalo Blue
- Phthalo Green
- Yellow Ochre
- Burnt Umber

Acrylic Soft Body/ Fluid paint

- **Titanium White**
- **Carbon Black**



Caran D'Ache WaterColor pencils

- Carmine
- Black
- White
- Purple
- Burnt Sienna
- Periwinkle Blue
- Jade Green

Fineline applicator 20 gauge

Hb pencil * Tombow ABT pen

Tracing paper

Fabriano Cold press 140 lb Block



Brushes -Synthetic

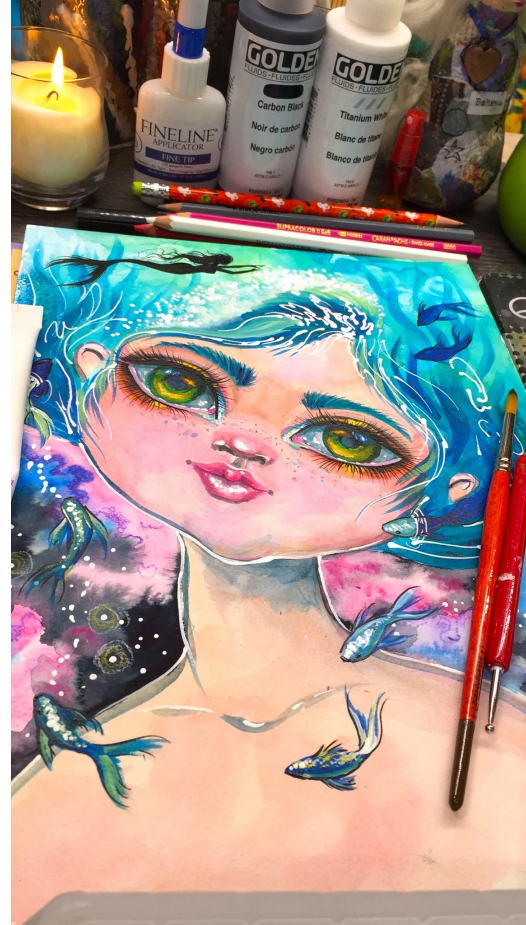
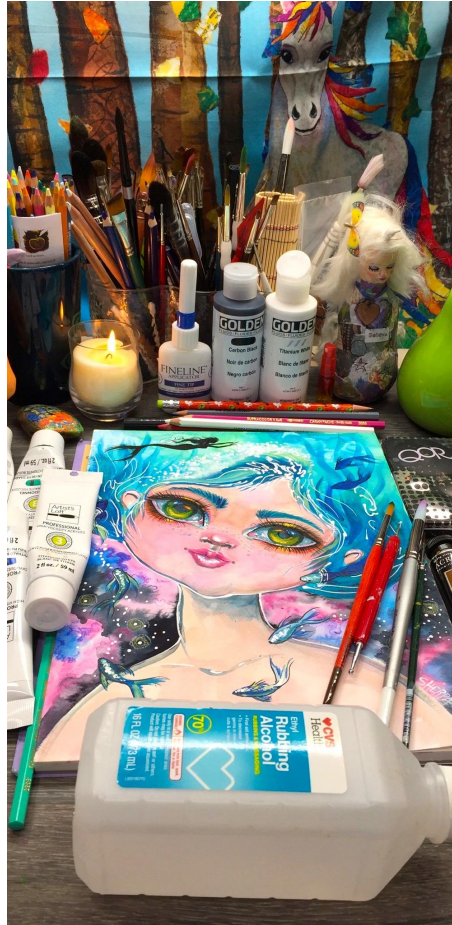
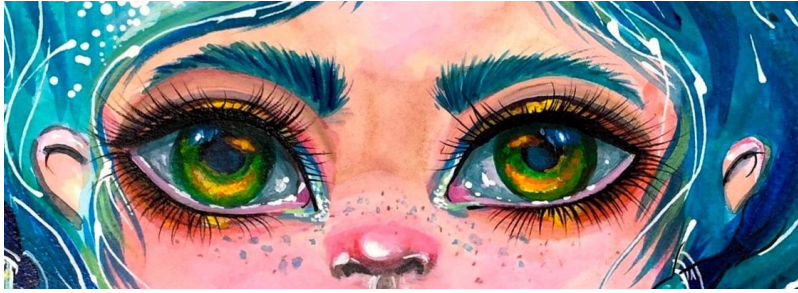
- #12 Round Silverwhite
- #1 Monogram Liner Ruby Satin
- #6 Round Raphael
- Art Sherpa Dotting Tool

Paynes Grey WaterColor

Rubbing Alcohol

Pipette

Mister



Trace the image on

Rub a pencil on the back of your own drawing created from the step-by-step drawing video. Or using the provided traceable. I find it best to keep the rubbing just to the lines of the drawing. Tape down with low tack tape so it doesn't slip. Then press family with a pencil, drawing over all of your traceable lines. This will transfer the image onto your paper.



Skin Tones

Mix Yellow Ochre, Quinacridone Magenta, and Titanium White to Create the master Skin Tone mix. Try changing up the ratios of each color to get different tones and Values.

Base mix ~ 2 parts ochre, 1 part Magenta, 3 parts white.

Try more ochre

Try more magenta

Try more White

Make Swatches



Water mix

Your Base Water Mix is

1 part Phthalo Blue

1 Part Phthalo Green

Add Cad yellow and White to your main mix to get different Water hues

Swatch your favorites



Alcohol layering

Using a pipette, dropper or brush, apply droplets of Rubbing alcohol to your wash allowing it to texture the paint .

*"Dive deep for the
Treasure that you
Seek"*

~ Unknown



Adding the Full Palette

Add Burnt Sienna and Black to your palette to increase the Values and Hues you can make.

*"I must be a Mermaid.
I have no fear of depth
and a great fear of
shallow living"*

~Anias Nin



Watercolor Pencil Techniques

A Watercolor pencil can be used as you might a traditional colored pencil, but it has a twist. You can add water to soften and blend.

You can color over wet areas of paper

You can add water to soften the pencil

"WHO SAYS THAT MY DREAMS, HAVE TO STAY,
JUST MY DREAMS?"

~ ARIEL, THE LITTLE MERMAID



Start the washes

Start by washing in a light thin layer of your light skin values

Add pinks to the Mouth Ears and Nose

Using Jade pencil color in eyes

Take a wet brush and soften the Colored pencil

“There is, one knows not what sweet mystery about this sea, whose gently awful stirrings seem to speak of some hidden soul beneath...”

— **Herman Melville,**

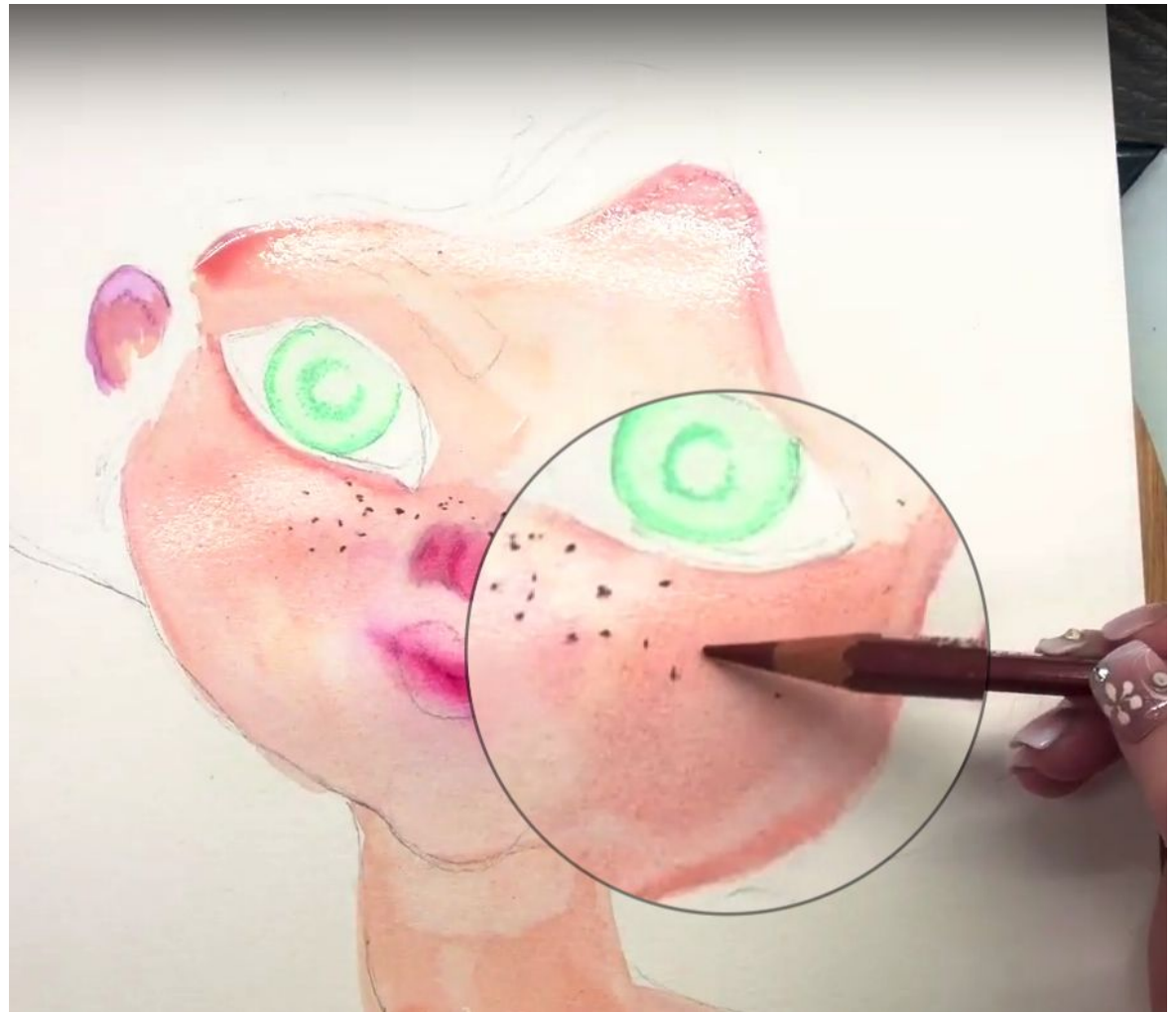


Freckles

With a burnt sienna watercolor pencil, softly create freckles by touching the pencil to wet paper

“Darwin may have been quite correct in his theory that man descended from the apes of the forest, but surely woman rose from the frothy sea, as resplendent as Aphrodite on her scalloped chariot.”

— Margot Datz, **A Survival Guide for Landlocked Mermaids**

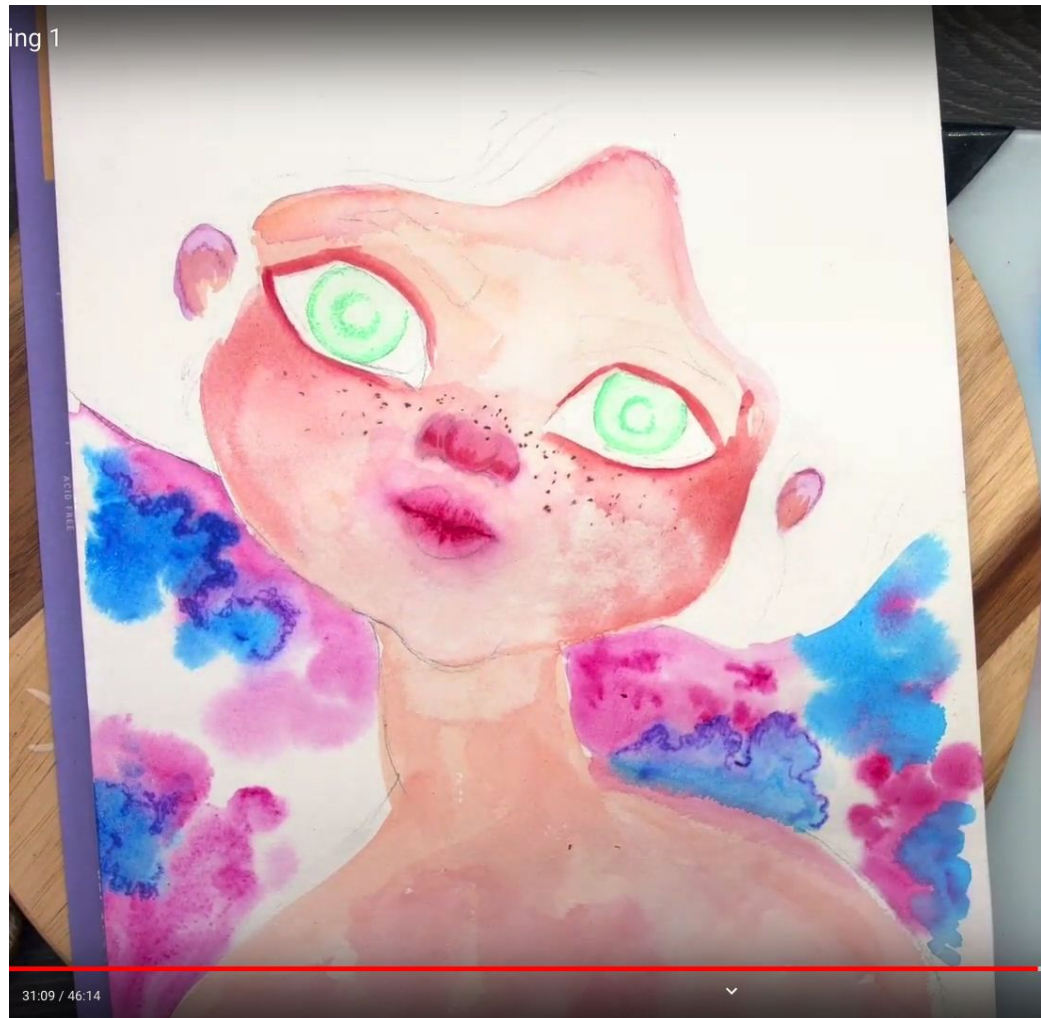


Value and Galaxy

Continue to Blush around the cheeks and eyes,

Using the color into Wet method
Bloom Galaxy clouds with pink and blue

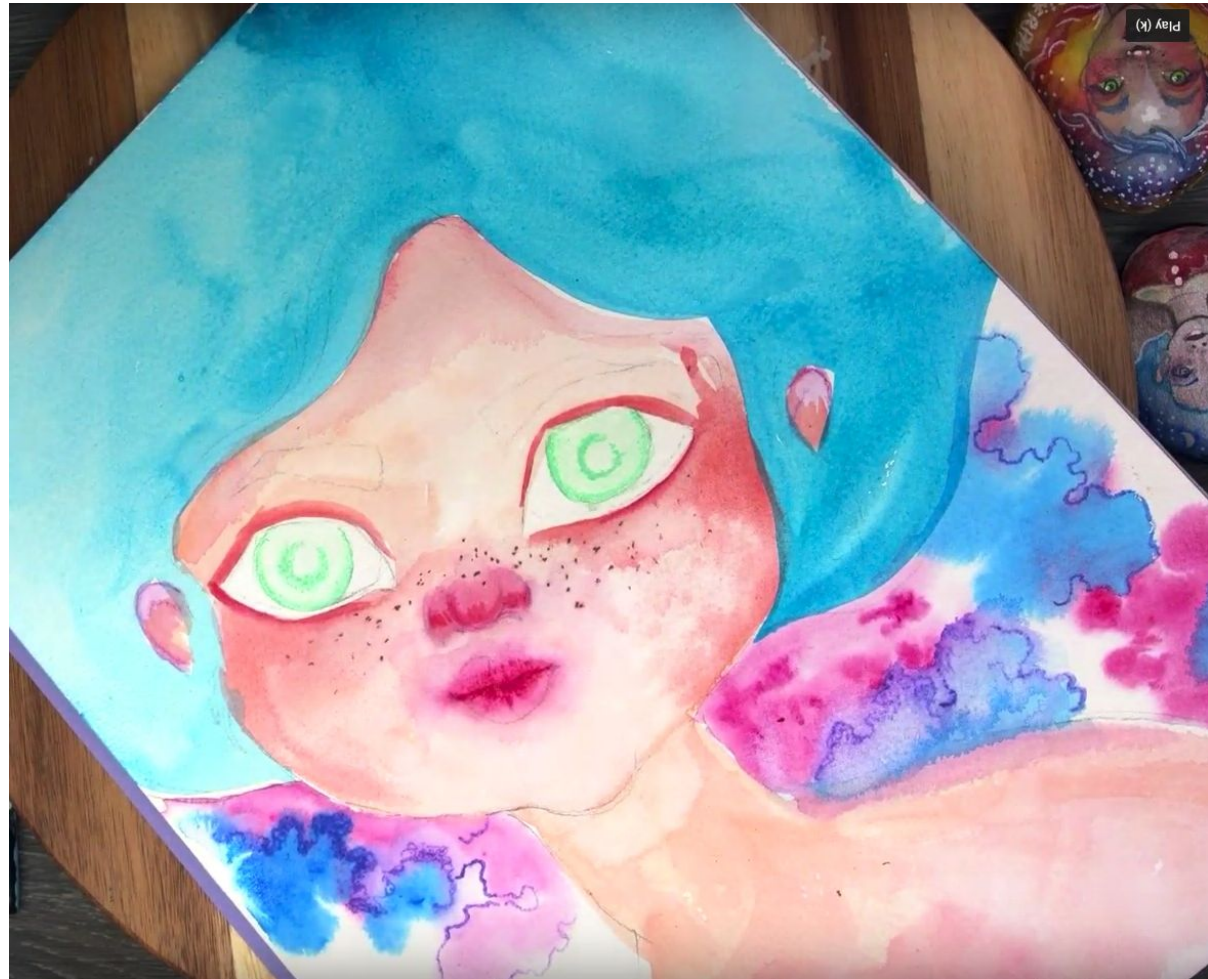
“Because there's nothing more beautiful than the way the ocean refuses to stop kissing the shoreline, no matter how many times it's sent away.” — Sarah Kay



Wash Water Hair

Wash in the phthalo turquoise to her hair

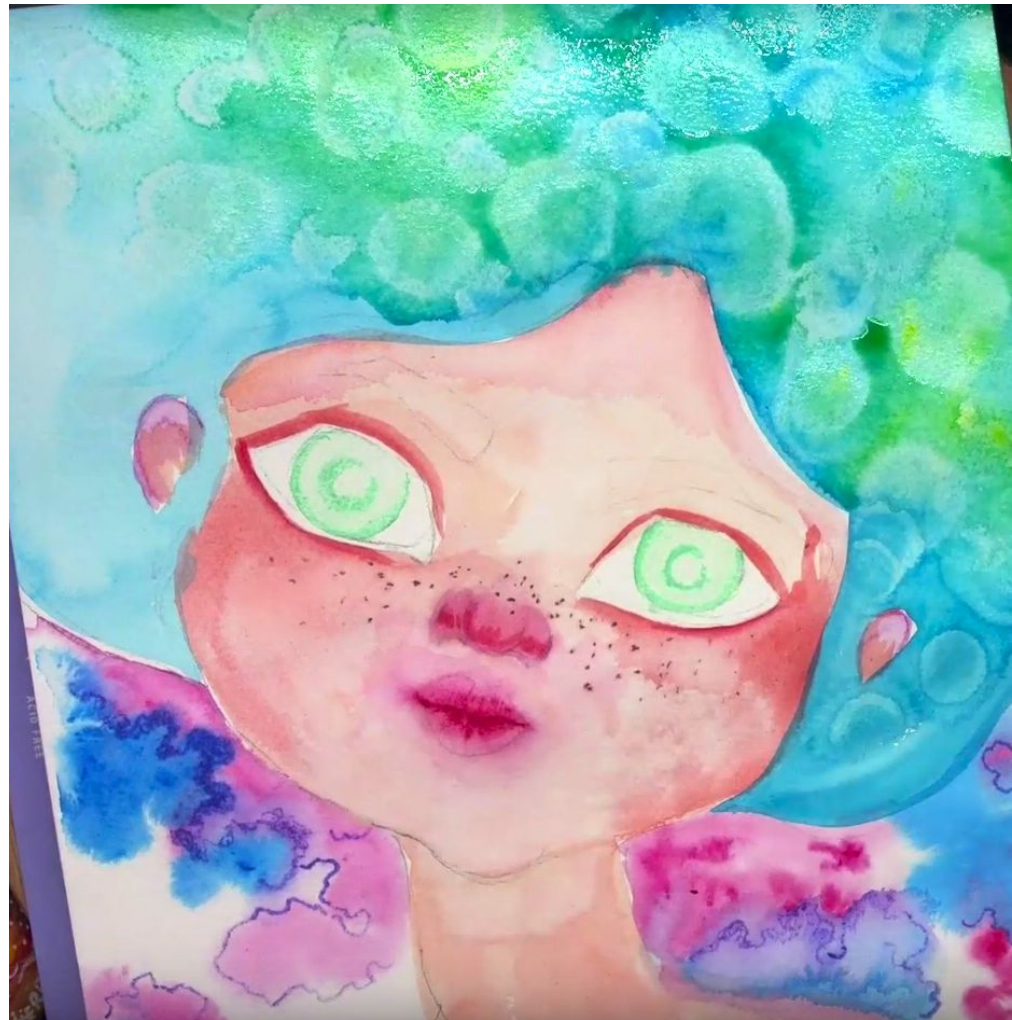
*"YOU are NOT a
DROP in THE
ocean. YOU are
an ocean in a
DROP." —
JOY N. HENSLEY*



Alcohol Layering

Using your dropper filled with rubbing alcohol, add droplets around her still wet hair

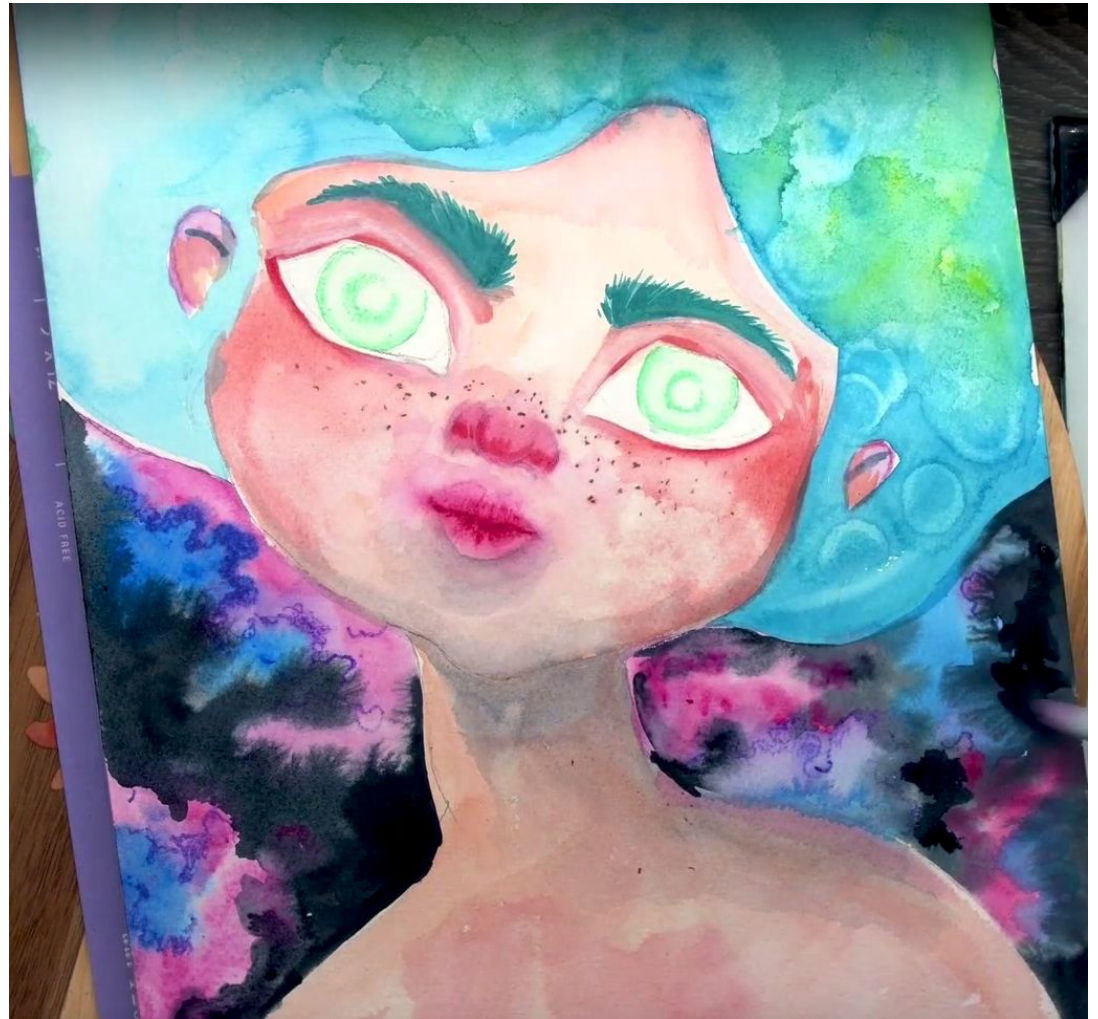
*"Mermaids don't
lose sleep over the
opinions of
shrimp."* —
Unknown



Eyebrows

Using your Aqua mixes, arch the eyebrows gently from the inner corner of the eye to the outer edge

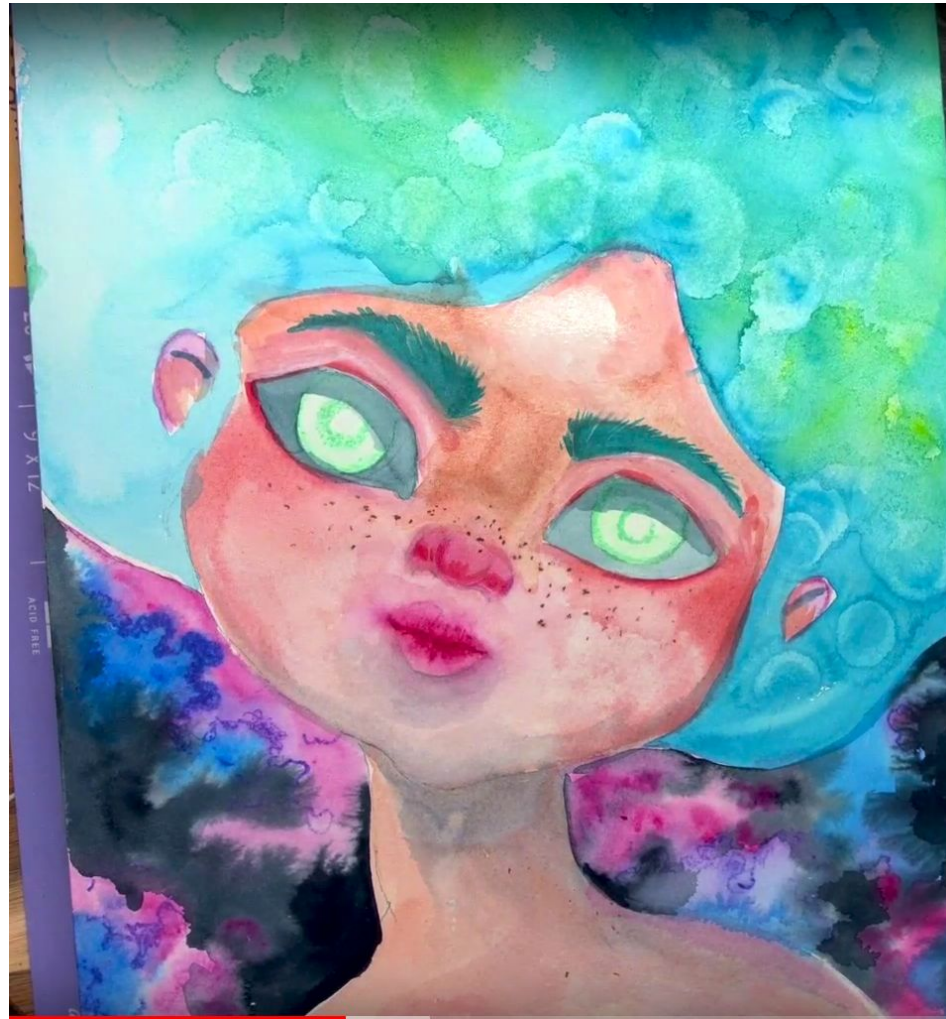
"DIVE DEEP FOR THE TREASURE THAT
YOU SEEK" UNKNOWN



A little more value

Time to add some fine eyebrow marks and add to her eyes. With a mid grey mix, shade the whites and across top half of her eyeballs

*"We dream in colors
borrowed from the sea." -
unknown*

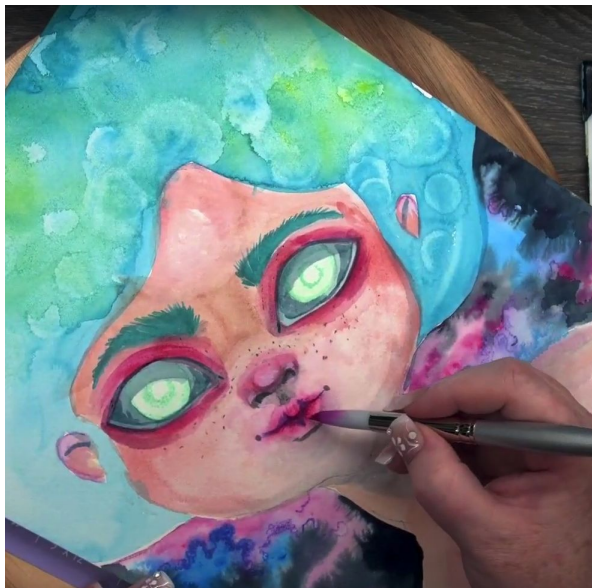


Refine the Nose and Mouth

Using several values of your nose, mouth and skin tones, start to refine your nose and mouth.

Shade the ball the nose with deep blush and forward tip of the nose.

Add the deep shadows to mouth and nose. Go back with white highlights using acrylic paint

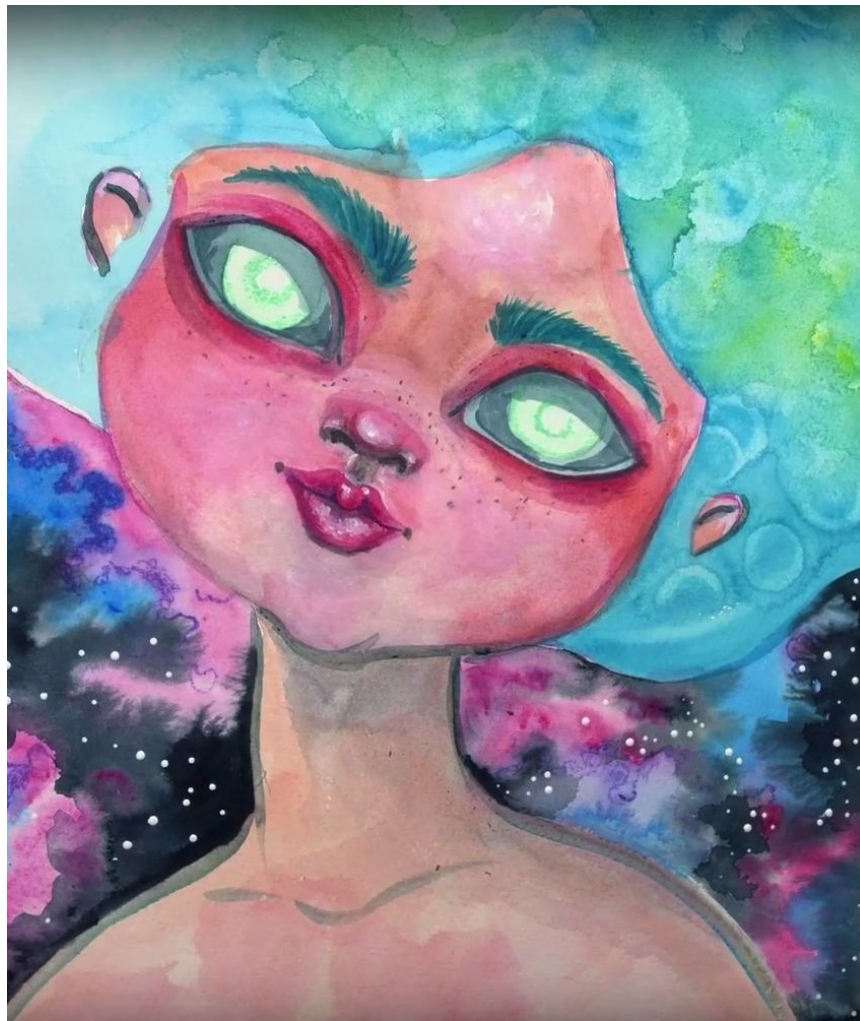


Refine the picture

Continue to add depth and value around the face, neck and features.

A soft grey outlining shadow is nice to add now

Using a dotting tool, add stars with White acrylic paint



Water and waves

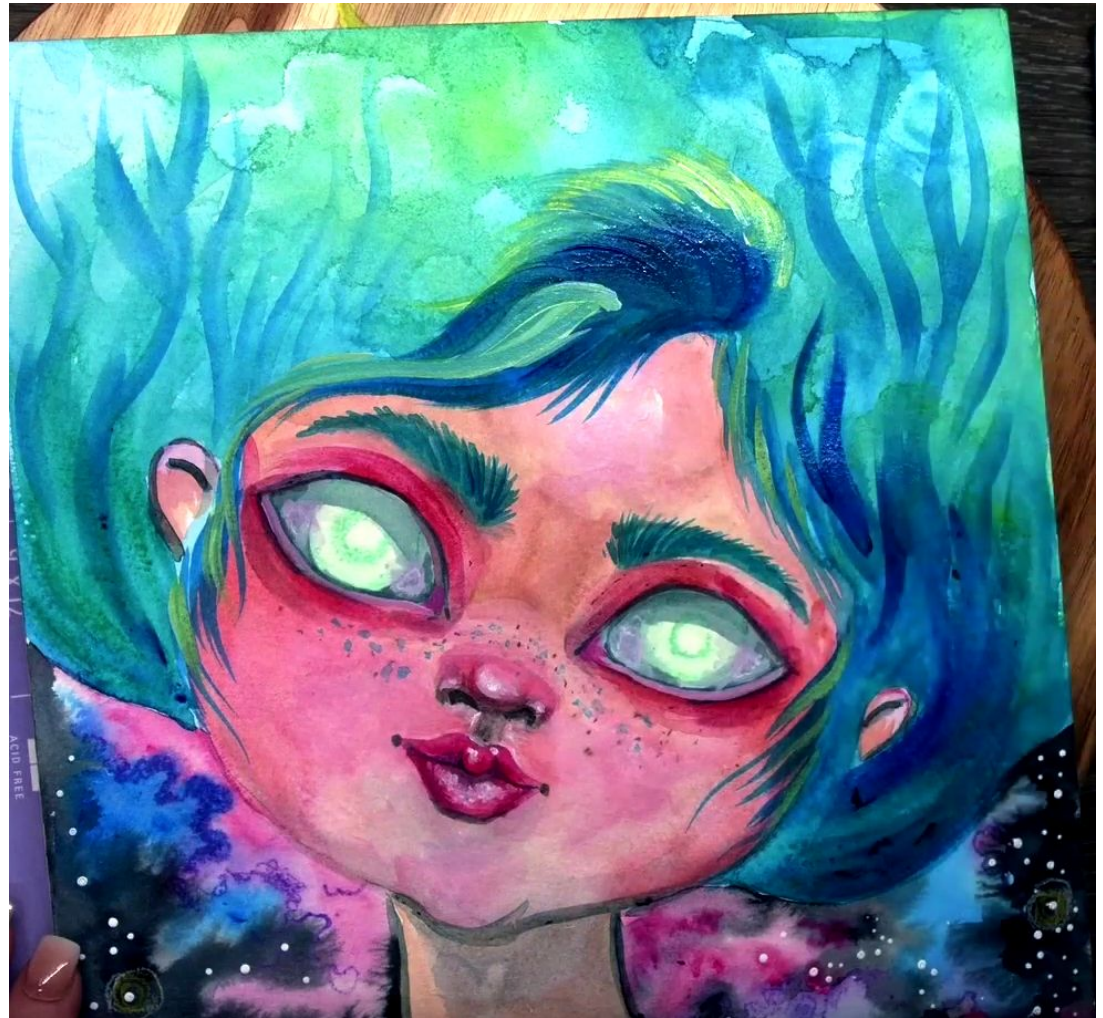
Begin to define the hair with deeper values and brighter greens.

Define the depth of the wave and its highlights along her brow.

Add tendrils of hair around the face

Continue layering darker and lighter values around her eyes

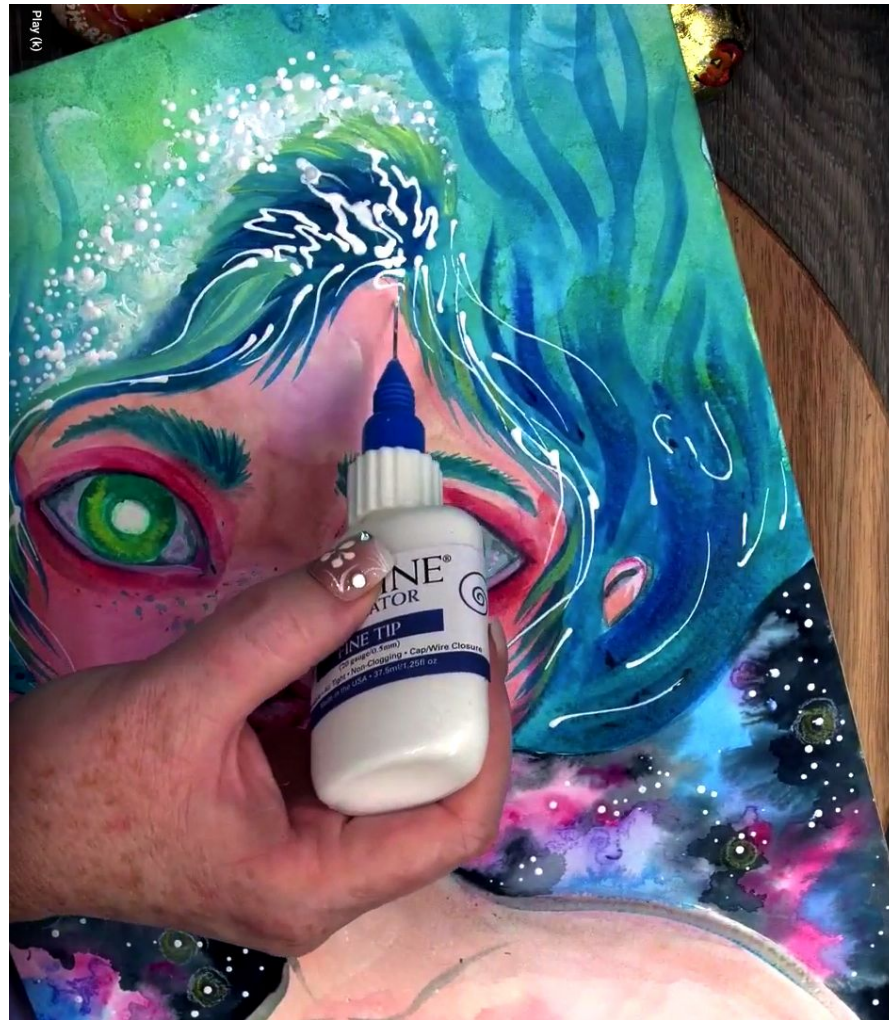
I like to put in Blue freckles across cheeks and nose



Fineline

Using a Fineline applicator, 20 gauge, with thinned white acrylic OR a white paint pen, add frothing and seafoam to the wave and hair

*"The sea, once it casts its spell,
holds one in its net of wonder
forever."* — Jacques Yves Cousteau



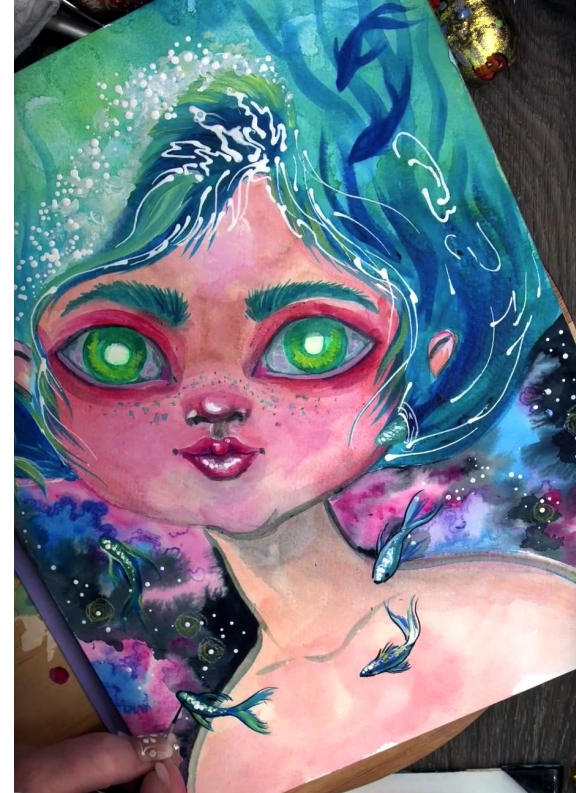
Add some fishy

Add the fish shapes in with deep blue

Refine the fish outside of her hair with layers of light dotting strokes to define scales

Finish with very light scales to show reflections

After the fish are in Add white reflections and ripples where the two fish leaving and entering her hair are



Paint in the Mermaid

Add the mermaid figure with black paint or a black paint pen

You may use the traceable of her if your not confident YET in drawing



*"She is water, powerful
enough to drown you, soft
enough to cleanse you,
deep enough to heal you"*

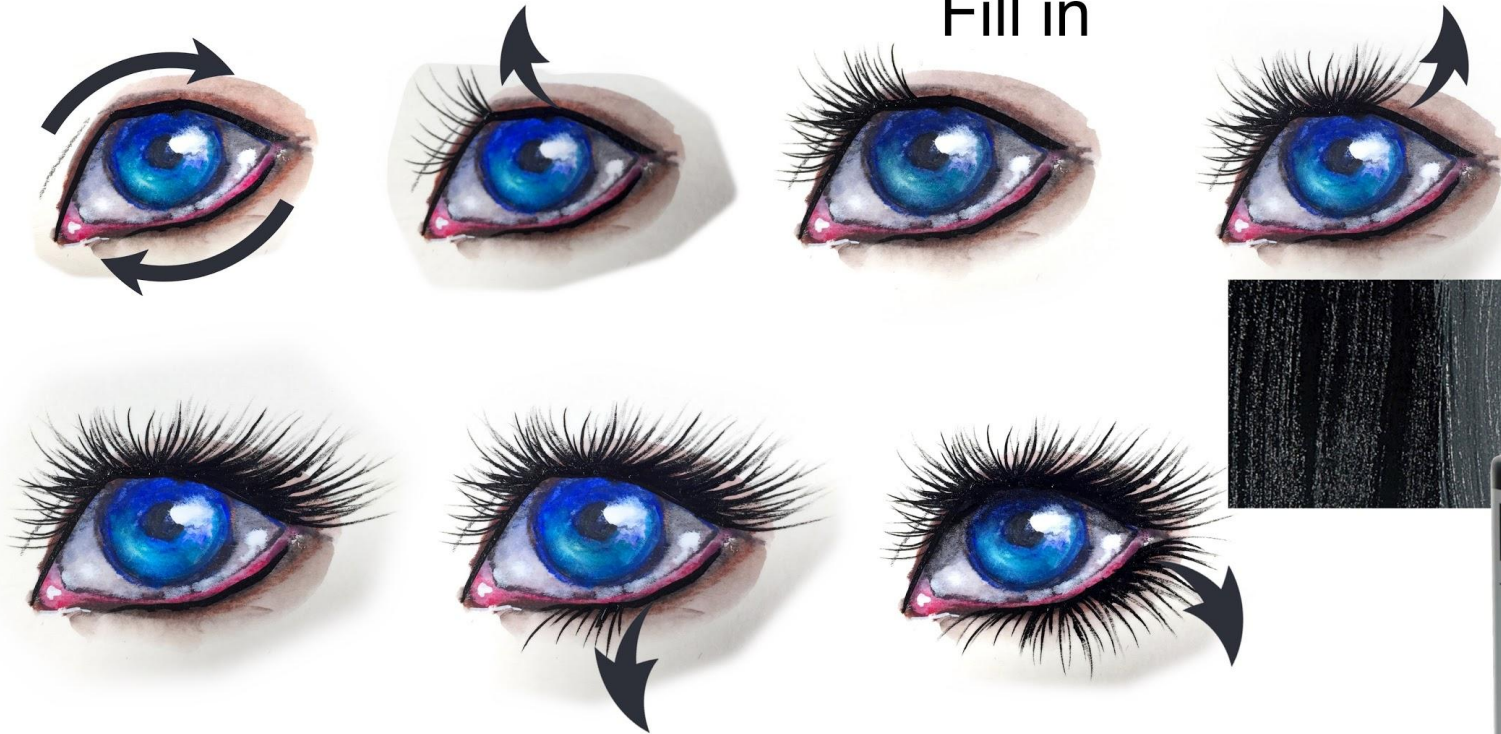
~ Adrian Michael



Add white reflections along the line where eye meets lids, the corners and the brightest reflection in the whites. Lashes are best with a Fine brush and fluid paint. Keep pressure light and release at the end of the stroke



Fill in



Lashes

Hints and Tips

When doing fine lines like eyelashes, the first thing we consider are the tools you'll be using. I personally love a well-made #1 monogram liner. There's a lot of spring to this brush while keeping a very fine point. This allows me to keep my pressure light to thin the line as much as I want easily. Keep in mind it may take some practice. I'm also very fond of fluid acrylic paint so that the flow from the brush is easy. My very favorites personally are by Golden Artist Colors (GAC) or Holbein paint.

Looking for better lashes ?

UPPER LASHES: Start by brushing on a fine line of black acrylic from the inside corner of the top lid to the outer edge. Now reverse for the lower lid. Brushing from the outside corner to the inside tear duct. Start putting in the lashes on the upper inside, making them short, fine, and bent as shown by the arrow. As you approach the middle of the lid, shorten the stroke and bend the bow the opposite way as you pass over the center line above the pupil!

Lower Lashes: Starting on the inside of the eye closest to the tear duct, begin adding fine, short lashes that bowl as shown in the diagram.

Continue on filling in the lower lashes and lengthening towards the center. As you approach the centerpoint, below the pupil, change the power of the lashes as shown in the diagram. Continue filling in the lashes as they approach the outer corner. As you get to the outer edge, begin to shorten and make the lashes finer again.

