

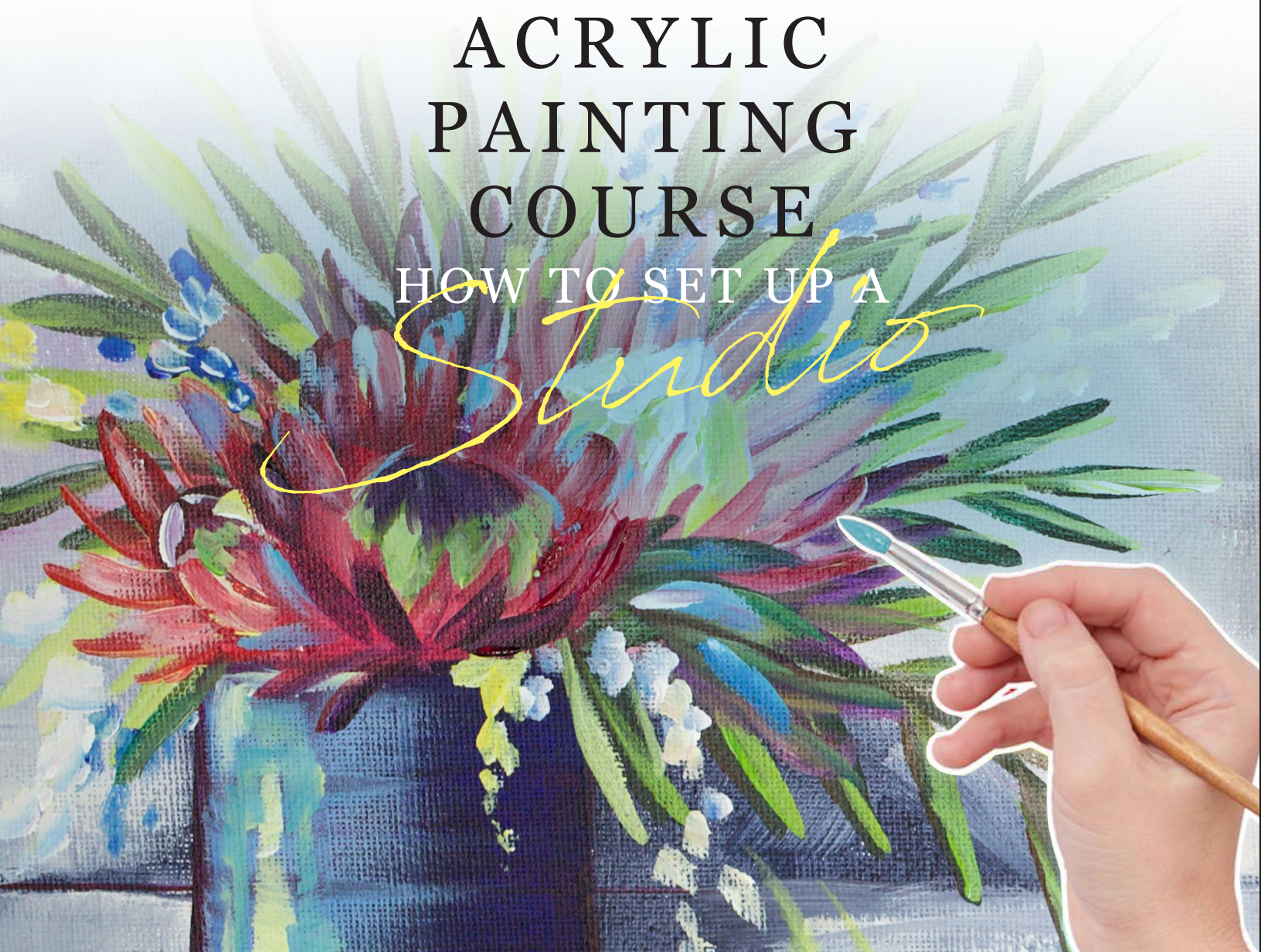
THE ART SHERPA™

PRESENTS

BEGINNERS ACRYLIC PAINTING COURSE

HOW TO SET UP A

Studio



HOW TO SET UP A STUDIO - NOVEMBER 2021



TABLE OF CONTENTS

VIDEO CHAPTER GUIDE.....	2
STEP 1 - THE FIRST QUESTIONS.....	3
STEP 2 - SIT OR STAND? THAT IS THE QUESTION	4
STEP 3 - ADAPTIVE ART SUPPLIES.....	5
STEP 4 - SHOPPING	5
STEP 5 - LIGHTING	6
STEP 6 - WATER DISPOSAL	6
STEP 7 - PAINTING STORAGE	6
STEP 8 - PETS AND KIDS.....	7
STEP 9 - MATERIALS	7
STEP 10 - WHAT TO DO NEXT	8
Q&A SESSION.....	9
THANK YOU, PATRONS	10

VIDEO CHAPTER GUIDE:

Below are the timestamps we inserted in the tutorial video so that you can easily coordinate using the book and the tutorial video simultaneously.

STEPS:	TIME:	DESCRIPTION:
INTRO		
STEP 1	1:38	THE FIRST QUESTIONS
STEP 2	5:14	SIT OR STAND? THAT IS THE QUESTION
STEP 3	12:49	ADAPTIVE ART SUPPLIES
STEP 4	16:39	SHOPPING
STEP 5	24:03	LIGHTING
STEP 6	27:09	WATER DISPOSAL
STEP 7	30:47	PAINTING STORAGE
STEP 8	32:16	PETS AND KIDS
STEP 9	37:04	MATERIALS
STEP 10	44:49	WHAT TO DO NEXT?





STEP ONE - *THE FIRST QUESTIONS*

WHEN PREPARING TO SET UP YOUR FIRST, OR SECOND, OR THIRD, ART STUDIO, THERE ARE A FEW ESSENTIAL QUESTIONS YOU NEED TO ANSWER BECAUSE EVERYONE HAS DIFFERENT NEEDS AND SPACE REQUIREMENTS.

WHERE ARE YOU THINKING OF PUTTING YOUR HOME STUDIO?

Maybe it's in a she-shed, or a man cave, or a kitchen table, or a TV tray.

IS THERE A WINDOW NEARBY?

You don't necessarily HAVE to have a window, but natural light is a valuable asset in any studio.

IS YOUR EASEL NEAR YOUR AIR CONDITION, THE CEILING FAN, OR THE HEATER?

You need to be aware of the temperature issues in your proposed space and how they could affect your paint and painting.

DO YOU HAVE SUFFICIENT ELECTRICAL OUTLETS?

Put in safety where safety is required. Use GFI outlets (Ground Fault Interrupt).

WILL YOU BE SHARING THE SPACE WITH OTHERS THAT YOU NEED TO BE MINDFUL OF THEIR NEEDS AS WELL AS YOUR NEEDS?

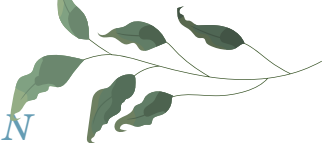
LASTLY, IS THIS A SPACE WHERE YOU CAN COME EASILY EVERY DAY IF YOU WANT TO PAINT?

LASTLY, IS THIS A SPACE WHERE YOU CAN COME EASILY EVERY DAY IF YOU WANT TO PAINT?

If you get through this list and have not ruled out your proposed space, then it probably will be a good space to house your home art studio.

IF YOU GET THROUGH THIS LIST AND HAVE NOT RULED OUT YOUR PROPOSED SPACE, THEN IT PROBABLY WILL BE A GOOD SPACE TO HOUSE YOUR HOME ART STUDIO.





STEP TWO - *SIT OR STAND? THAT IS THE QUESTION*

THE NEXT BIG CONSIDERATION IS HOW DO YOU INTEND TO PAINT? DO YOU PAINT ON BIG CANVASES, WHICH USUALLY REQUIRE A FREE STANDING EASEL? IF SO, MAKE SURE THAT YOU USE A GEL MAT TO STAND ON AND HAVE A SIDE TABLE TO HOLD YOUR SUPPLIES. STORAGE IS ALSO AN ADDED ASSET.

If you are limited in space, and you prefer standing at an easel, you could get an easel that attaches to the wall and they really save you space.

I like an H Frame Easel, but it takes up a LOT of space.

I do recommend a convertible utility easel; the Blick Studio Convertible Studio Easel. It folds flat, is adjustable, and has a small bit of storage.

I also love my Santa Fe Easel by the BEST company. It will hold large canvases and has a flat surface setting too.

If you want to sit and paint at a table, use smaller canvases, or share the space with others, you might use a table easel because it's hard to paint artwork if it is flat. You can't keep the perspective, see what you're doing, and that's why I use a lazy susan to paint on. It's important to move the canvas and not your body for health reasons.

I like a Studio Sketchbox Easel. It is great, has nice compartments, and folds up well when you need to clean up your creative space from a shared table.

A great table easel is a table easel that has a solid back to hold smaller canvases.

A drafting table is a wonderful find because it tilts but can also be used flat.

You also need to be aware of what you are sitting on, make sure you have armrests and you are watching your posture.

Try not to paint on the floor if you can. Painting on the floor causes much stress to your neck and back and can make painting painful.

SHOP ART EASELS BY CATEGORY



Studio Easels



Portable and Plein Air Easels



Tabletop Easels



Wooden Easels



Metal Easels



H-Frame Easels



Kids' Easels



Presentation and Display Easels



Teaching Easels





STEP THREE - *ADAPTIVE ART SUPPLIES*

SOMETIMES AN ARTIST NEEDS A STUDIO THAT MEETS SPECIAL NEEDS AND CHALLENGES.

If your mobility is wheelchair based, you can paint at an easel but you may have to sit at an angle to the painting surface. There are easels made specifically for wheelchairs and they can help you maintain a good position. You can do a search for "adaptive art supplies" in almost any online art vendor. Adaptive Art supplies meet many needs for many artists facing a wide variety of challenges. Check often as new inventions are being developed every year. That said, it can be hard for specialty companies to stay in business. If you see a tool that would make your painting experience better go for it.

Working with tremors or hand shakes can also be difficult. If working at an easel, you want a mahl stick which stabilizes your arm; if working at a table, an artist bridge.

Disability Arts Online is a great site for you to look to for help, resources, and support.

Izzy Wheels is another great site to make your wheelchair artistic in nature. They have hundreds of wheel covers to express every side of your personal creative nature.



STEP FOUR - *SHOPPING*

WHERE DO I BUY ART SUPPLIES?

Keep in mind that the list price is not the real price and to get the most bang for your buck, start with the clearance and sales page/ products. Stalk these pages; sometimes they are hard to find. It's also worth it to be a coupon user and most online art teachers do offer special discount codes with certain art retailers.

You can shop at brick and mortar art supply stores like

The Brush Guys and Jerry's Artarama, online art stores where they have coupons like Michaels and Joann's, but don't overlook the value of EBay and Goodwill.





STEP FIVE - LIGHTING

YOUR STUDIO WILL NEED LIGHTING AND MORE THAN WHAT'S IN YOUR CEILING FAN OR TABLE LIGHT. A WINDOW CAN HELP, BUT IF YOU WANT TO PAINT AT NIGHT, YOU NEED SOME SPECIFIC LIGHTING.

There is cool and warm light; warm light will make the paint seem blue. You overcorrect for what you're seeing. Natural light is the best.

Studies have shown that fluorescent lights can have long term health effects, so I use all LED lights. LED Daylight 5000K CRI 90+ (90 or higher)



STEP SIX - WATER DISPOSAL

YOU SHOULD NOT POUR PAINT WATER DOWN THE SINK BECAUSE A BUILDING UP OF IT CAN DAMAGE YOUR PIPE.

There are several solutions; all of which will protect the environment.

You can make sure you allow the water cups to settle because the solids will go to the bottom, use a screen to pour off about 2/3 of the water, then use a

coffee filter over a jar; filter gets thrown away, water goes into the yard.

You can use kitty litter to pour it into and then throw out the clumps.

You can use hay in a bucket to absorb it.

Please allow your palettes to dry before you throw them out,

There are evaporation methods out there or a crash solid kit that is a science experiment.

STEP SEVEN - PAINTING STORAGE

LET'S TALK ABOUT WHAT TO DO WITH ALL THOSE BEAUTIFUL PAINTINGS YOU ARE GOING TO BE CREATING; AND LET'S GIVE IT SOME THOUGHT BEFORE IT BECOMES AN ISSUE FOR THE HOUSEHOLD.

If you don't love it, you can repaint the canvas, don't even need to gesso.

Don't store face to face; acrylic paint binds to acrylic paint. Don't leave for long periods of time in the car.

Room temperature without too much humidity or heat is ideal.

Dorlan's wax medium is wonderful for journal art.

Not hot, not humid, don't stick it together.





STEP EIGHT - *PETS AND KIDS*

THEY COME IN ALL SHAPES AND SIZES, AGES AND EYE COLORS; TWO LEGS AND FOUR LEGS, SOME HAVE HAIR, SOME HAVE FUR, AND THEY ALL WANT TO BE IN YOUR LAP WHEN YOU PAINT BECAUSE THEY NEED TO BASK IN THAT ART ENERGY YOU ARE GIVING OFF. THEY ALL WANT TO BE WITH YOU. THEY WANT TO HELP; THEY ARE STUDIO ASSISTANTS.

Rubbing alcohol breaks down acrylic paint, 91%, is the must for a studio and will get acrylic paint out of animals, kids hair, and most furniture and carpet.

Baby wipes are an excellent tool for the studio, and you should have both alcohol and wipes at all times. We even use them in some techniques in art.

Your dog and your cat love your brushes; they make excellent chew toys.

Some brush filaments are natural animal hair, so it's understandable and cats are notorious for destroying squirrel and hog brushes. Dogs seem drawn to synthetic. They may have 100,000 toys on the floor, but this treasure is all THEIRS. If you want to keep them, put them where your studio assistant can't get to them.

Your pet can probably drink a bit of paint water, and live, but if he eats a tube of acrylic paint; take it to the vet.

Birds can be damaged by airborne particles that come out of some art supplies.

Don't drink the paint water; don't rinse out your brushes in coffee.

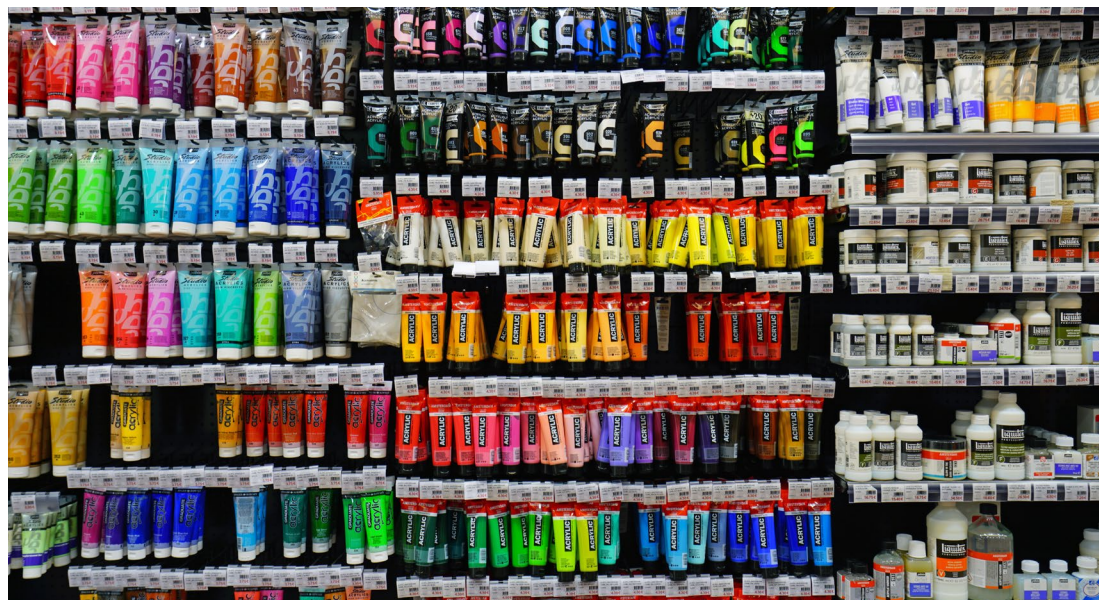


STEP NINE - *MATERIALS*

OK, WE HAVE NOW WORKED OUT A LOT OF DETAILS ABOUT WHERE AND WHY. I'M GOING TO GO OVER THE MINIMUM SUPPLIES THAT I CONSIDER YOUR ART STUDIO SHOULD INVEST IN.

Keep in mind that before you go out and spend a ton of money, you really should watch the next several upcoming videos in this series, "Brushes", "Paint", and "Surfaces", but here's my basic list of indispensables:

Acrylic Paint - You need red, yellow, blue, white and black at a minimum. I have a limited palette for 2021 that is used in all my tutorials, although not all colors are used in all tutorials.





STEP NINE - CONTINUED

For this course, you only need the colors above.

Acrylic Brushes - Get short handled if at a table; long handled if at an easel. You need a 1" Bright, a Round Brush, a Fan Brush, and an Angle Brush. Brushes are like tribbles; there are always more after you get to that stage.

Surfaces To Paint On

Paint Rag

Clothes For Painting - If you're anything like me.

Cups for Water - If using Solo cups, use a double cup.

Brush Soap - You can use brush soap/dawn and warm water after every painting session.

Mister Bottle

Paint Palette - Palette can be colors, but can also be the place where we put the paints to paint with. I use a Sta-Wet Palette that keeps the paint safe and moist for days. A Tip That Won't Kill You: DO NOT USE A SHEET OF PICTURE FRAME GLASS TO PAINT ON.

Craft Sponge



STEP TEN - WHAT TO DO NEXT

YOU NOW HAVE THE KNOWLEDGE TO GO SET UP YOUR STUDIO BASED ON YOUR NEEDS.

I certainly hope you follow the entire series. Please share, subscribe, and like the video on Facebook or YouTube. If your question is not answered by chat, we can leave it in the comments after the show, and I will try to answer all of them. We are also going to go to Facebook right now and answer any questions in an information Q&A session right now. We will hold these Q&A sessions after all the informative classes in the series.

PLEASE SHARE YOUR STUDIO AND YOUR STUDIO ASSISTANTS IN THE FACEBOOK "THE ART SHERPA OFFICIAL" GROUP.



Q & A SESSION

MOST OF THE QUESTIONS ASKED TODAY WERE ANSWERED BY ME IN THE PREMIERE SO I CHOSE TO DO AN ENTIRE DEMONSTRATION ON HOW TO SET UP A MASTERSON'S STA-WET PALETTE.

You need to follow the directions that come with yours, but here are my hacks. In addition to what they recommend, I soak 3 sheets of the palette paper, and I use an acetate page from a package of sponges.

Here's the way I layer mine:

PREP THE 3 PAPERS

DAMPEN THE SPONGE

REMOVE EXCESS
WATER FROM THE
PALETTE

2 SHEETS PAPER, IF
SOAKED ENOUGH, ARE
A BIT TRANSPARENT

ACETATE PAGE

SPONGE

1 SHEET PAPER

If you just prefer not to use a Sta-Wet, "New Wave" makes a palette that is tempered glass, and I believe they have one that would fit exactly in the Sta-Wet Palette, if you'd like one in there.



THE ART SHERPA

SHARE YOUR PAINTING FROM THIS CLASS WITH ME!
#THEARTSHERPA

YOU CAN JOIN THE THE ART SHERPA OFFICIAL GROUP

AND POST YOUR PAINTINGS THERE:

<https://www.facebook.com/groups/TheArtSherpa>

WEBSITE: <https://theartsherpa.com/>

FACEBOOK: <https://www.facebook.com/TheArtSherpa/>

INSTAGRAM: <https://www.instagram.com/theartsherpa>

PINTEREST: <https://www.pinterest.com/cinnamoncooney/>
#TheArtSherpa #StepbyStepPainting #Acrylicpainting

ABOUT THE ART SHERPA:

Artwork and video is the sole property of The Art Sherpa™ and intended for the students personal education and Enjoyment. For questions regarding using any Art Sherpa painting in a commercial setting labs@theartsherpa.com for all other questions support@theartsherpa.com Read our full disclosure here that covers partnerships and affiliate links <http://bit.ly/affiliatedisclosureTAS>

TO GET TEXT NOTIFICATIONS OF WHEN WE ARE LIVE

Text theartsherpa on your phone to the number 33222



THE ART SHERPA PATRONAGE

Check out our exciting
patron program!

An exclusive place where
The Art Sherpa brings you
awesome art content and
fabulous perks!

THE ART
SHERPA

Join the Community Now:
www.TheArtSherpa.com/patron

These lessons Were made possible by the generous support of our Patrons.