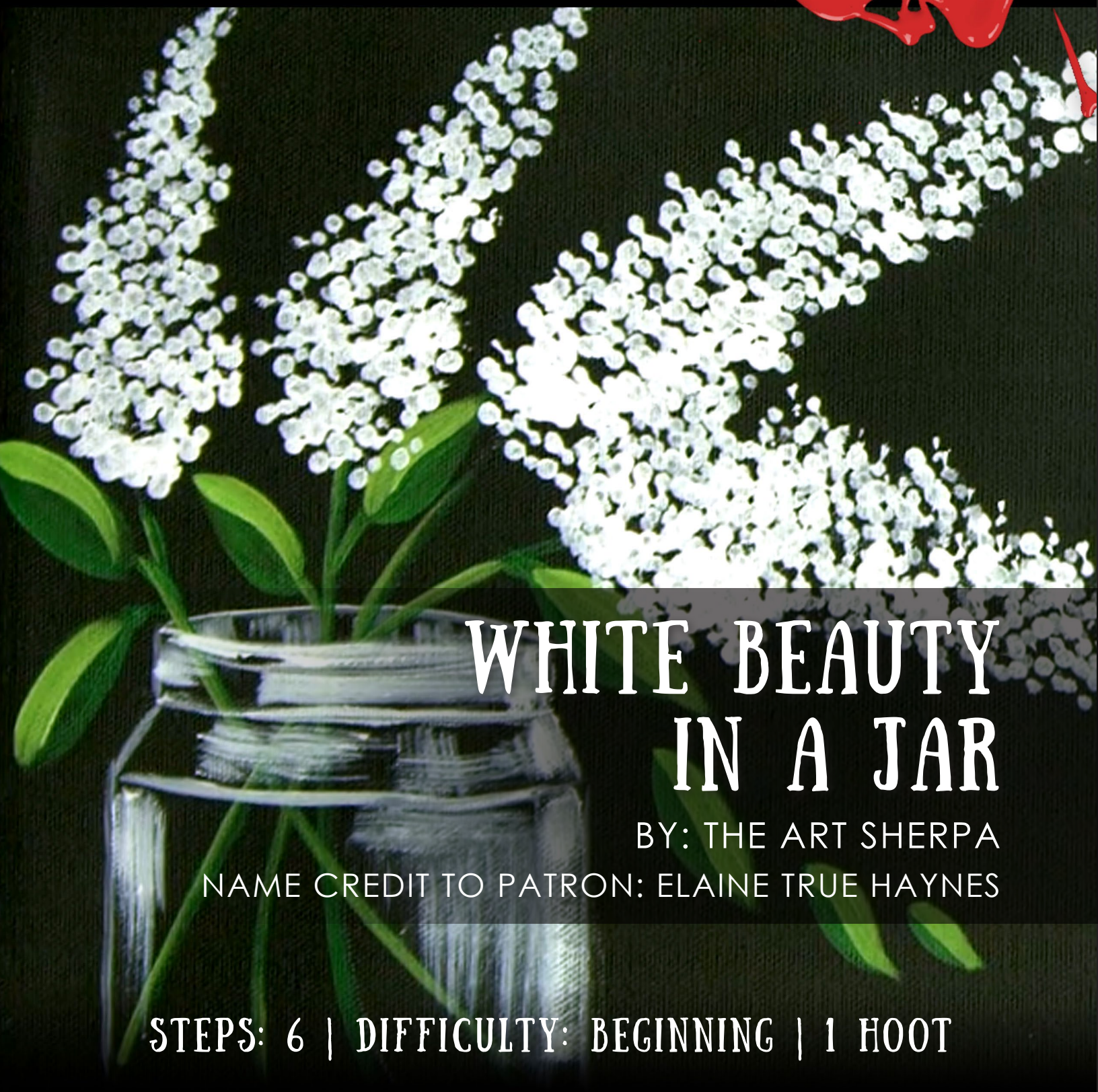


THE ART SHERPA™

HOW TO PAINT

IN ACRYLIC



WHITE BEAUTY IN A JAR

BY: THE ART SHERPA


NAME CREDIT TO PATRON: ELAINE TRUE HAYNES

STEPS: 6 | DIFFICULTY: BEGINNING | 1 HOOT



TABLE OF CONTENTS

SHERPA FORWARD	3
PAINT AND TOOL GUIDE	4
VIDEO CHAPTER GUIDE.....	5
THE GOLDBLOCKS ZONE	5
STEP 1 - SKETCH THE JAR	7
STEP 2 - PAINT THE JAR	8
STEP 3 - STEMS AND LEAVES	9
STEP 4 - GREENERY HIGHLIGHTS.....	10
STEP 5 - FRONT OF JAR	12
STEP 6 - FLOWERS	13
TRACING METHOD	14
TRACEABLE.....	15
GRIDDING INSTRUCTIONS.....	16
TECHNIQUE REFERENCES	17





SHERPA FORWARD:

I am resolved to do more to help teach art than demonstrate how to paint art and this document is a step by step written description of brushes, colors and mixes, techniques and explanations taken directly from the tutorial. It is provided to you as a resource to assist you in your art journey. It is best viewed in outline format to allow for ease in navigation between sections. We hope to prepare a printed version of all of those documents that you will be able to purchase which will include technical resources not available to you at this time about color mixes, techniques, brushes, materials, and all things art.

Traceables and grid resources for this tutorial are included and more can be found at: theartsherpa.com.

Keep in mind that brush sizes are not standard across the art brush industry. The most important thing to look for is not the brand of brush I use, but the shape of the brush head, it is a bright, or a filbert, or a hog. Brushes get bigger as the numbers get bigger, and it is not uncommon for beginners to fear using too big of a brush. Use what you have, what is most comfortable for you, explore your options, don't fix what isn't broken, and learn what works for you.

It is a fairly neutral still life which is the most commercially successful subject for painting. A still life is a work of art depicting mostly inanimate subject matter. You would commonly see natural subjects, including food, flowers, plants, rocks, shells, or man-made subjects, like drinking glasses, books, vases, jewelry, coins, and pipes.

We sincerely hope you enjoy your experience with The Art Sherpa and look forward to seeing your completed paintings. Please do not hesitate to contact us at: support@theartsherpa.com if you require assistance.

You can join the The Art Sherpa Official group at and please post your paintings there:

<https://www.facebook.com/groups/TheArtSherpa>

Grab your paint, get your brushes and let's go!



PAINT AND TOOL GUIDE:

Use this paint legend below to understand the symbols that I use to give you important painting information.

PAINT:

- Mars Black = MB
- Cadmium Yellow Medium = CYM
- Titanium White = TW
- Phthalo Green = PG
- Fluid White Paint = FWP

BRUSHES:

- Small Synthetic Bright
- Small Synthetic Round
- Bunches of Cotton Swabs

TOOLS:

- Chalk Pencil or Watercolor Pencil
- T-Square Ruler
- 9 x 12 Canvas (If you notice that your canvas started to warp, as sometimes happens, just turn the canvas over and put it back side forward on your easel, then mist the back of the canvas. It usually resolves itself. Let dry before you proceed.)
- Optional: StayWet Palette

SYMBOL GUIDE:

- > Less than previous amount
- < More than previous amount
- + Equal amount

TECHNIQUES YOU WILL USE IN THIS PAINTING:

- Expressive Painting Strokes
- Being Painterly and Loose
- Dry Brushing
- Color Theory
- Directionality
- Color Mixing
- Implying Motion



VIDEO CHAPTER GUIDE:

Below are the timestamps chapters we inserted in the tutorial video so that you can easily coordinate using the book and the tutorial video simultaneously. The actual timestamps will be provided after the tutorial goes live on YouTube. A revised version will be made available after it is revised.

STEPS:	TIME:	DESCRIPTION:
INTRO	00:00	INTRO
STEP 1	01:11	SKETCH THE JAR
STEP 2	03:53	PAINT THE JAR
STEP 3	05:08	STEMS AND LEAVES
STEP 4	08:28	GREENERY HIGHLIGHTS
STEP 5	10:12	FRONT OF JAR
STEP 6	12:14	FLOWERS
	16:25	SIGN



THE GOLDILOCKS ZONE

In painting, every technique or process has what I call a "Goldilocks Zone". As an artist, you will be constantly seeking this space to achieve maximum results from any project you're doing. Much like Goldilocks, you will go into each technique and try to find a space that is just right for you. When you're loading your brush, sometimes you will have too much water, sometimes you will have too little water, and sometimes you

will find the amount of water is just right. When applying strokes to the canvas, you may find that you have too much brush pressure, too little brush pressure, or that your brush pressure is just right. The Goldilocks zone changes for every technique and every process. You will know you have found it when something that seemed difficult suddenly becomes much easier. A little goal I'd like to set for you is to notice when you have found yourself in the Goldilocks Zone so that you can locate it again easier the next time you come across a particular technique.





THE ART SHERPA PATRONAGE

Check out our exciting
patron program!

An exclusive place where
The Art Sherpa brings you
awesome art content and
fabulous perks!

THE **ART**
SHERPA

Join the Community Now:
www.TheArtSherpa.com/patron

STEP 1 - SKETCH THE JAR

"BRUSH SHEDDING IS A PROBLEM"

BRUSHES & TOOLS:

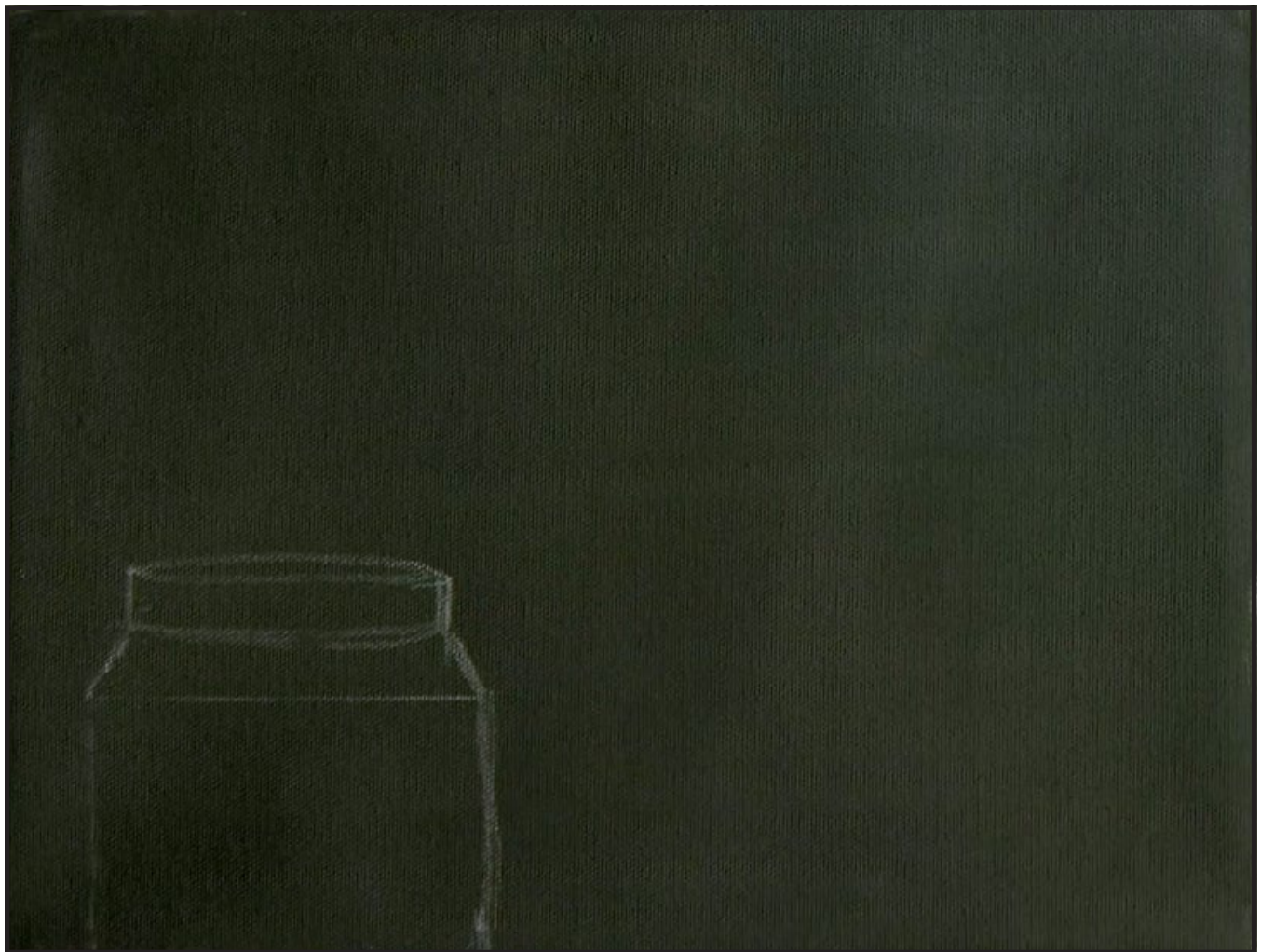
T-Square Ruler
Chalk Pencil or Watercolor
Pencil

STEP DISCUSSION:

- I chose to freehand this image but I have also provided a traceable if you prefer to use that method. There is no right or wrong way, you can grid, transfer, or freehand, whatever makes you the most comfortable. If you are free handing, you

have numerous references to assist you. There is the picture that follows this step, the traceable, and the grid reference. I drew in only the major objects.

- Use a pre-painted black canvas or completely paint a white canvas With Mars Black. To begin sketching the jar make a mark on the left side, two fingers from the bottom. Then, to the right of that, add another mark about the width of a hand. Using these marks draw upward lines for the sides of the jar approximately 2 inches tall. Place a T-Square ruler horizontally on the canvas to make a level line. Then angle the shoulders of the jar inward from the corners. Add a slightly curved smile line above with two more vertical lines on either side of that. Then draw the top curved line with a thin ellipse on top.



STEP 2 - PAINT THE JAR

“LESS WATER IS MORE”

PAINT:

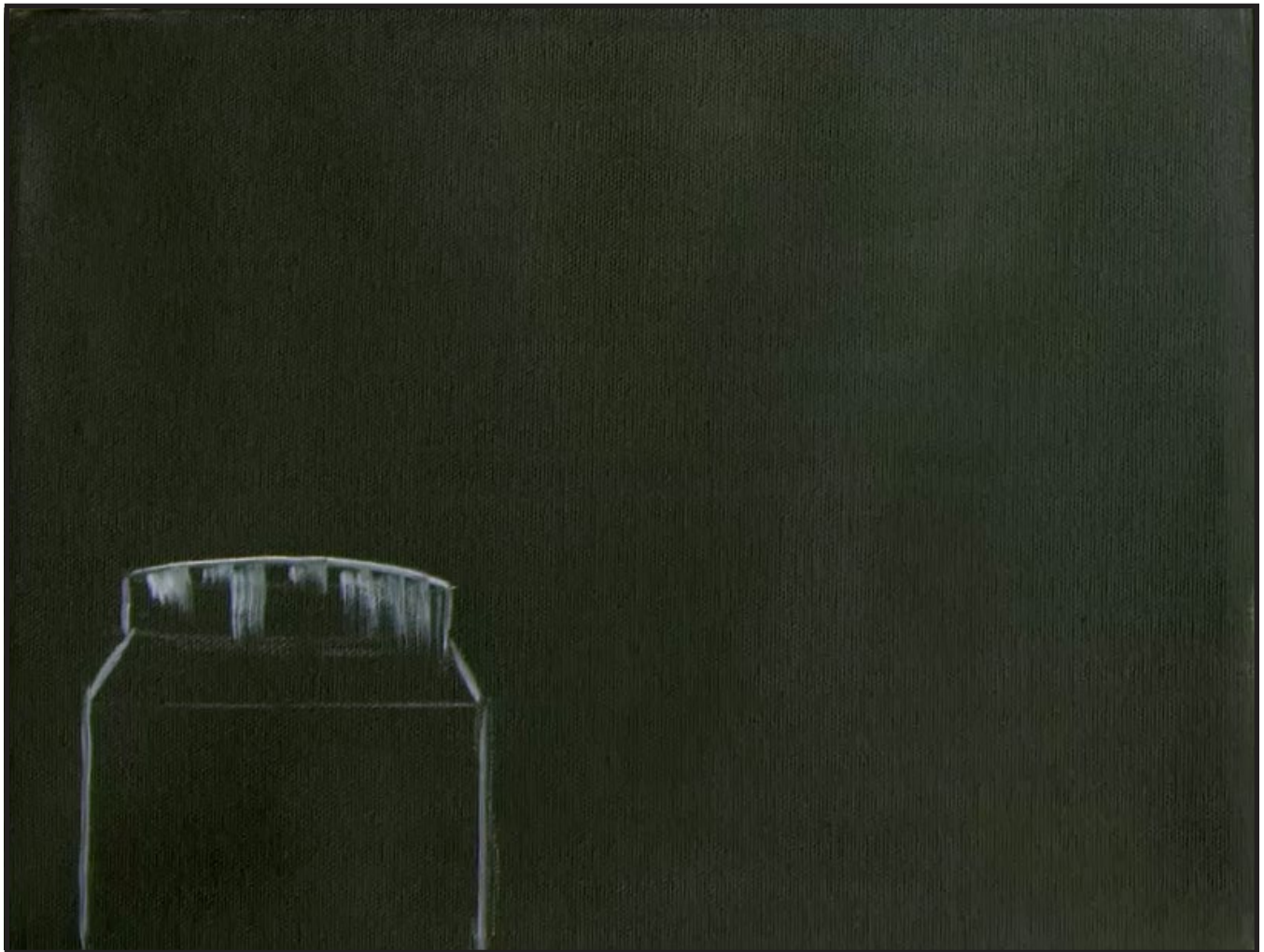
Titanium White = TW

BRUSHES & TOOLS:

Small Synthetic Round

STEP DISCUSSION:

- Line the outer edges of the jar using Titanium White paint. Using a dry brush, lightly paint downward lines at the top of the jar for the reflection of glass. Rinse.
- Dry the surface before continuing to the next step.



STEP 3 - STEMS AND LEAVES

“THE SUPPORTIVE STRUCTURE OF LEAVES”

PAINT:

Phthalo Green = PG

Cad Yellow Medium = CYM

BRUSHES & TOOLS:

Small Synthetic Round

Chalk Pencil or

Watercolor Pencil

COLOR MIXES:

Grass Green = CYM + PG

STEP DISCUSSION:

- Using chalk or a watercolor pencil, draw in your guidelines for the stems that are inside the jar. The first line is going to start at the far right of the jar and go upward to a point in the upper left of the canvas. Then next to it, draw a stem a bit longer and curving slightly to the right. The second stem starts towards the left a bit and curves much further to the upper right corner. Finally, The last stem starts on the left side of the jar and curves down the top of the jar to the lower right corner.
- Starting just about an inch above your jar, paint the stems going downward inside of the glass, using the **Grass Green mix**. To achieve nice flowing stems, use the toe of the brush and even pressure.
- On the left side of the canvas, begin to paint elongated diamond shaped leaves in different directions. Add a few more leaves at the top of the jar. Trail some independent leaves going off towards the bottom right corner. Rinse.
- Dry the surface before continuing to the next step.



STEP 4 - GREENERY HIGHLIGHTS

“CAUSE THEY’VE GOT...DIMENSIONALITY”

PAINT:

Phthalo Green = PG

Cad Yellow Medium = CYM

Titanium White = TW

BRUSHES & TOOLS:

Small Synthetic Round

COLOR MIXES:

Bright Green =

TW + CYM > PG

STEP DISCUSSION:

- Add a highlight to the top of the leaves using the **Bright Green mix**. Had some dimensionality to the stems by adding a little highlight to them as well. Skip a line here and there to place one stem in front of the other. Rinse.
- Dry the surface before continuing to the next step.



WATERCOLOR WEDNESDAYS

FREE
weekly watercolor
live stream virtual art class!
7:00 PM EST

Watch directly from TAS Facebook
page each week.

ALL skill levels welcome.
Bring your watercolors and let's

RELAX &
CHILL OUT
TOGETHER

THE ART
SHERPA



SHERPA

STEP 5 - FRONT OF JAR

"SOMETIMES YOU WANT ONE DROP, ONE DROP ONLY"

PAINT:

Fluid White Paint = FWP

BRUSHES & TOOLS:

Small Synthetic Bright

STEP DISCUSSION:

- With your brush barely damp, outline the top smile line of the jar rim, painting over top of the stems. Then paint the bottom smile line of the jar rim. Add a drop of water if needed to improve flow. Paint a slightly curved line for the shoulders of the jar.
- Paint a reflection about 2/3 across the right side of the top rim of the jar. Add a smaller reflection to the left side. Then dry brush some reflections on the shoulder of the jar, mostly vertically but a few horizontally.
- Drybrush some vertical reflections along the left side of the base of the jar. Add more vertical and horizontal reflections on the right side of the base of the jar. Paint a bit stronger reflection down the right side of the jar. Rinse.



STEP 6 - FLOWERS

"TAPPING"

PAINT:

Fluid White Paint = FWP

BRUSHES & TOOLS:

Bunches of Q Tips

STEP DISCUSSION:

- You can either thin the acrylic paint with a couple of drops of water, or you can use Fluid White Paint. Use Q-tips in bunches of three or four or more wrapped in small elastics. Load paint onto the Q-tip bundles using a tapping motion. Then stamp the paint onto the canvas, also tapping up and down. Form elongated flowers, tapering them out at the tips. Continue tapping out these flowers along the top of each of the stems.
- Sign.



THE TRACING METHOD

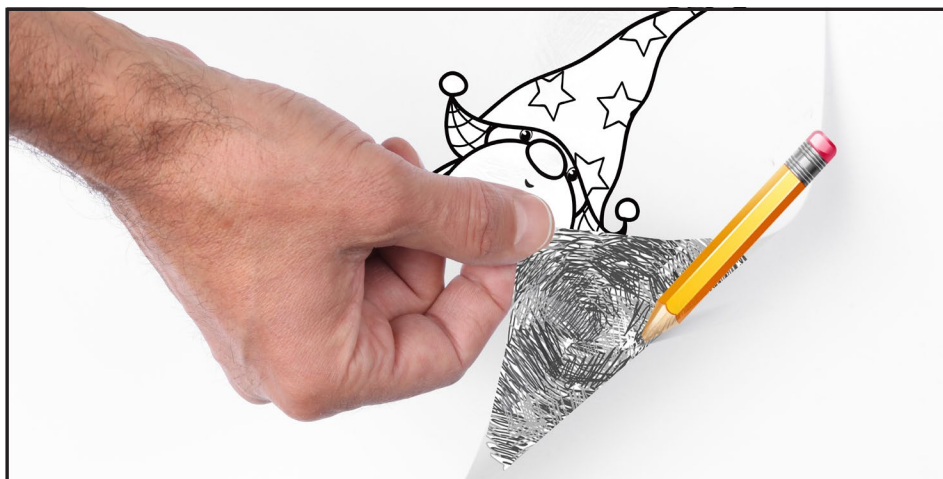
- Adjust the size to fit your surface and be sure to check your printer settings to see if the final size reflects the size you need.



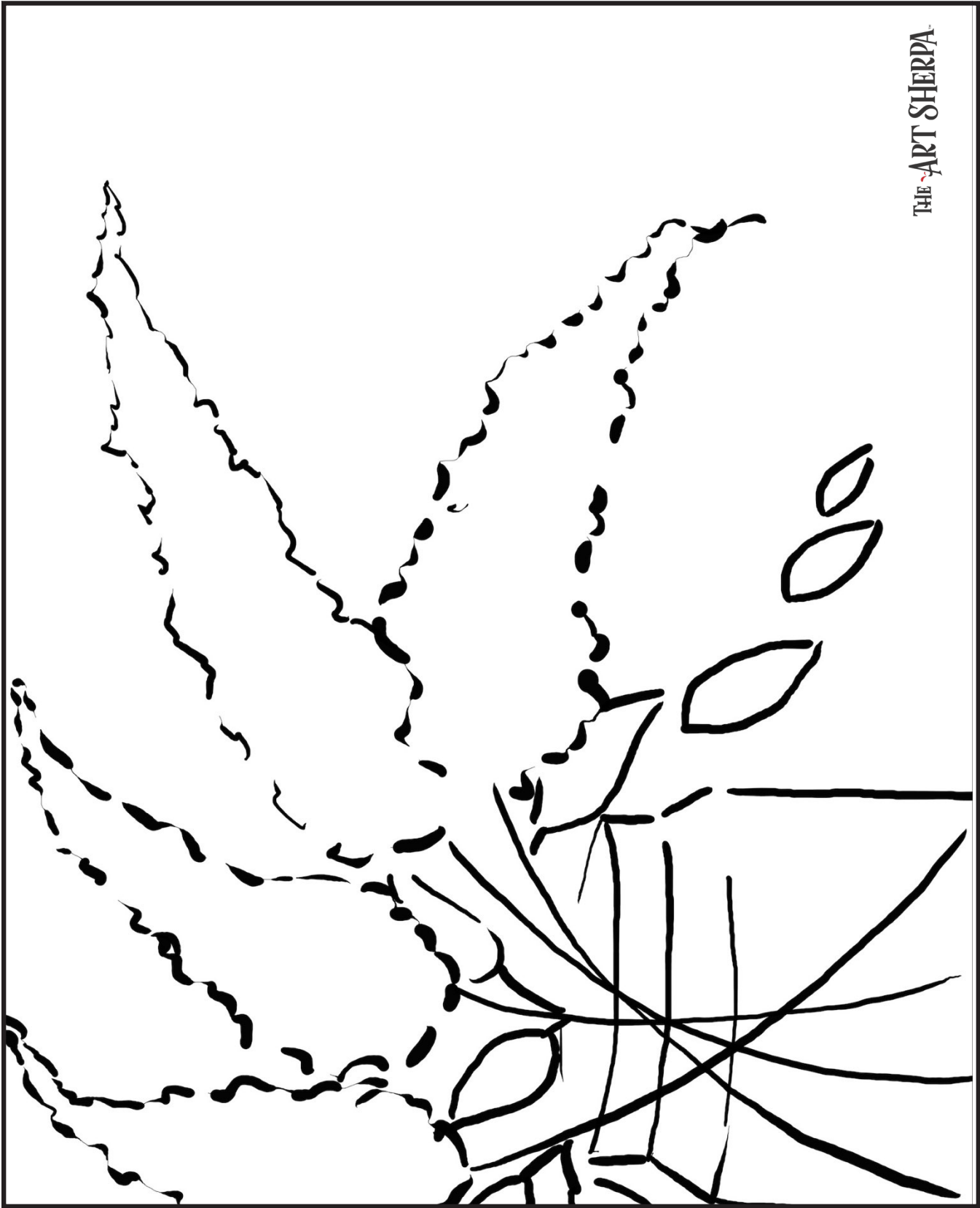
see that your transfer is happening. If not check if your rubbing is too thin or that your pressure is not too light. After you are done tracing the lines, remove your traceable and you should have a copy of the line art on your canvas.



- Rub the back with graphite or use Saral paper and skip this step.
- Be sure to rub the back of your paper on the side without the lines drawing using a HB pencil.
- Hold up to window light to make sure graphite covers all the lines of the subject drawing.
- Test your Saral paper to make sure the color you are using is going to show on the canvas.
- Tape your paper on your surface to transfer with tape to keep it from moving. If you are using saral paper make sure you have both sheets taped down and the transfer side of the Saral paper will be facing your surface. Carefully, with medium pressure, redraw over every line. You can lift one corner of paper to



TRACEABLE:



THE ART SHERPA

GRIDDING INSTRUCTIONS:

The gridding method allows you to dip your toe into drawing without being in the deep end of the drawing pool on day one. For our purposes, the gridding method has been worked out for you. In this example, we have an 8 x 8 canvas and the example is based on a one-inch square grid with everything of equal ratio. On your 8 x 8 canvas, you will make a mark using your chalk tool and a T-square ruler at every 1 inch point both horizontally and vertically. The T-square will help ensure that your lines are straight.

To draw the grid your canvas must be dry and it's advisable that it is also cool. You should use chalk that is wax or oil free. It must be pure chalk. I use a Dritz fabric-marking tool because it does fine lines easily and removes well from the canvas. There are also chalk pencils available or you could use chalkboard chalk. While I will always share with you the tools and equipment that I am using, you are welcome to deviate from that any time you feel something else is best for you.

Something that I have learned especially with complex images is that it can be easy to get lost in the grid. If you find yourself

unsure, go back and check to make sure that the square you are marking on matches the square in your reference. After you master this method, you will be able to use gridding to transfer any image from a reference to your canvas.

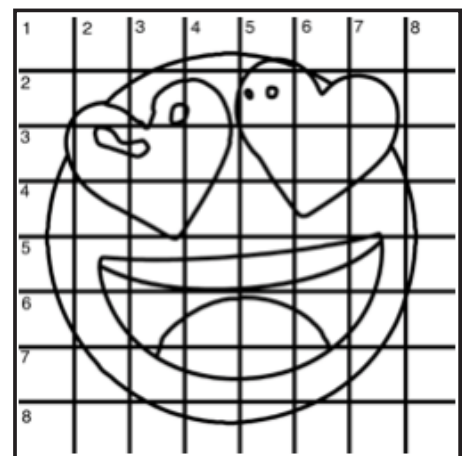
Number your columns 1 - 8, left to right, and your rows 1 - 8 from the top to the bottom.

Find the first row that the contour line of your image enters and exits and duplicate only what you see in that one single square. Continue through the entire image square by square transferring, the contour lines of the subject with chalk on your canvas. When you have duplicated the subject from your reference to your canvas, you will be done.

You can remove chalk easily by taking a soft brush and getting it damp with clean water. Gently brush over the lines you wish to remove and they will lift.

If you prefer a different size there are many great resources out there that involve math about how to scale. I do not teach math for many good reasons and I could count them all for you, but that would be doing math. The resources out there for that information and those mathematical formulas exist online in copious amounts. Explained beautifully and if you are choosing to paint different sizes than we are utilizing in this mini book, I highly recommend finding one of those formulas and mastering it. Short of that, buy a 8 x 8 canvas to match the free grid for this project.

HERE IS AN EXAMPLE OF A 8 X 8 CANVAS; YOU CAN DO A 1" GRID ON ANY SIZE CANVAS.



TECHNIQUE REFERENCES:

BLENDING WET INTO WET

Create transitions from one color to another, or one value to another, in acrylic painting, by blending colors together with the brush on the canvas while both are still wet. Mastering a blend like this is also essential for acrylic painting. In general, blending requires a soft pressure with a bit of urgency because it must be accomplished before the paint is dry. If you are in very dry studio conditions, such as air conditioning or dry heating in winter, your paint may dry out faster than you can blend it. No worries...there are mediums called retarders that you can add to the paint to slow the drying time.

BLOCKING IN

Paint in the shape with a color, without detail.

CONTOUR

Following the outer lines of an object or subject with your brush or tool.

COOL COLOR

Colors on the cool side of a color wheel. Blues, greens and purples. These colors shouldn't visually feel cool to the eye. They often make up objects in our real world that are cool like ice or the green in nature. These colors tend to recede visually and give a sense of distance.

CONTOUR PAINTING

Use the brushstroke to define the outline of the form. The brushstrokes are long and smooth and help us express the form and line of the object.

FEATHERED BLENDING

Create a softened edge by gently brushing on the toe of the head of the brush allowing the bristles to feather out visually defusing the stroke.

FINE LINE WORK

Taking paint that is made more fluid and a fine line brush to create brush Strokes that are delicate and elegant in nature. This is often used for hair, delicate grasses or natural elements, edged highlights.

GLAZING

Taking thin transparent coats of paint over another coat of dry paint. The transparency of the paint allows the color from the paint underneath to affect the paint on top. This is another way for artists to make transitions with acrylic paint. Some paint is naturally transparent because of how pigmentmented it is. Colors like quinacridone magenta or phthalo blue are very transparent. Opaque pigments can be made transparent using a medium for glazing.

LAYERING

This is a very important part of acrylic painting. You can layer wet paint over wet paint. You can layer dry paint over dry paint. You can glaze over dry paint to layer also. Layering can help you build texture and depth in a painting. Understanding that techniques are built up in layers will help you move away from the magical brush thinking. You remember seeing cartoons paint a tunnel in one stroke with a single brush? As regular humans we can't do that to get these effects, we need to layer the paint. Once you embrace this thinking, the depth of your painting will improve greatly.

LOOSE, EXPRESSIVE AND PAINTERLY

When you paint showing the brush stroke. The painting has a freshly captured feel. This technique gives the impression of capturing a moment in time. It has qualities where the color stroke in texture defines the artwork instead of line.

LOOSELY MIXED

Taking two colors and mixing them together with both colors still evident in the mix and brush stroke.

PAINTERLY

Free flowing and expressive brush strokes. Painterly expression of art generally allows the medium and the brush strokes to show instead of hiding them through blending and careful placement.

S STROKES

Being able to create compound curves as strokes is

a very important technique in painting. Most of the natural world will require your ability to execute it as a stroke. It's a good idea to practice making bold S strokes and delicate S Strokes.

SCUMBLING

Scumbling certainly has some dry brushing to it but involves a more randomized circular brush stroke. Be careful when you scumble, you don't want to press so hard that you break the heel of the brush. In scumbling, just like in dry brushing, we won't be using a lot of water in the brush. We are going to want to move the brush around in a random and circular motion creating no sense of a particular line or direction.

SMOOTHLY BLENDED OR TIGHT PAINTING

This is when you smooth the paint and try to hide the brush Strokes and transitions. When you hear an artist talking about a particular painter being tight, what they're speaking of is the way that this artist is able to hide the medium method of the painting. Acrylic blending is one of the more frustrating techniques for new artists.

THOROUGHLY MIXED

Take two colors and thoroughly incorporate them so they make a smooth, even secondary color with no sign of the two colors used to create it.

TRANSITIONAL MIXING

There are many ways to blend acrylic paint creating tonal and value transitions through the hues. When you have two very different colors you can create hues that are half shades by mixing them together and biasing the mix to create a subtle transition.

UNDERPAINTING

Loose large fields of color that future layers of painting will build on.

WARM COLOR

These colors are on the warm side of the wheel such as red, yellow and orange. Warm colors remind us of things like fire and sunlight. They tend to come forward visually and pull the viewer in.

RESOURCES

- The best resource for this book is to use it with the YouTube video. Additionally, I have many resources to help new painters achieve their dreams of being creative. I've made over a thousand videos and chances are I have a video that will help you with your specific challenges.
- Be sure to check out the "Where to Start Acrylic Painting with the Art Sherpa" playlist on Youtube.
- Search for videos on the website.
- Use the traceable - it is NOT cheating.
- Join the Art Sherpa Official Facebook group for support.
- Come to live streams and ask questions.

WHAT TO DO WITH YOUR FINISH PIECE

As an artist, there's still a lot to think about.

Do you varnish? Believe it or not, varnishing is optional with acrylic painting. In my opinion it's best only to do so in good weather in a dust free space following the instructions of the specific varnish for acrylic painting exactly. Varnish is good because it does protect and unify the finish of a painting, but it is not required.

Allow your painting a few days to cure and harden. Acrylic paintings do dry quickly but they still continue to cure a few days after you're finished even with thin applications of paint. Taking the time to allow your paintings to cure will help them be more resilient through the framing and hanging process. These days you don't need to be a professional to frame or hang your paintings. Frames and ready to hang options are available at your local craft and art store.

When acrylic paint is warm, it gets soft, so when a painting is near the warmth of a fireplace you wouldn't want to add decorations that would touch it because they could leave an impression. It's perfectly fine to hang your artwork over the fireplace and change it out seasonally like I do. It's just important to be aware of hazards and fire safety. Also knowing that acrylic paintings can become a little softer when they're warm will prevent you from accidentally having a boo boo. Perhaps your Elf on the Shelf doesn't need to sit on the edge of the frame or lean against the painting if your art is in a warm spot. Properly cared for, acrylic paint will never become wet again or lose its cure and it will always remain finished and dry. This is the nature of plastics.



 **SUBSCRIBE**

FOLLOW THE ART SHERPA



 **SUBSCRIBE**

WEBSITE:

<https://theartsherpa.com/>

FACEBOOK:

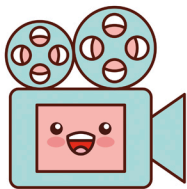
<https://www.facebook.com/TheArtSherpa/>

INSTAGRAM:

<https://www.instagram.com/theartsherpa>

PINTEREST:

<https://www.pinterest.com/cinnamoncooney/>



**#THEARTSHERPA
#STEPBYSTEPPAINTING
#ACRYLICPAINTING**

ABOUT THE ART SHERPA:

Artwork and video is the sole property of The Art Sherpa™ and intended for the students personal education and Enjoyment. For questions regarding using any Art Sherpa painting in a commercial setting labs@theartsherpa.com for all other questions support@theartsherpa.com Read our full disclosure here that covers partnerships and affiliate links <http://bit.ly/affiliatedisclosureTAS>