

*Free  
Sample!*  
Complete Acrylic April  
book available on  
Amazon!

THE ART SHERPA™



*Acrylic  
April*

TEXTURED ABSTRACT PALETTE KNIFE:  
NATURE INSPIRED  
*HUMMINGBIRD PARTY*

BY THE ART SHERPA

Name credit to Patron: Cindy Musarra Zultowski

Steps: 7 | Difficulty: Beginner | 1 Hoot

2023

# Table of Contents

SHERPA FORWARD .....	3
PAINT AND TOOL GUIDE .....	4
VIDEO CHAPTER GUIDE .....	4
STEP 1 - COLORED BACKGROUND .....	5
STEP 2 - GREEN HARMONY.....	5
STEP 3 - JOYFUL YELLOW .....	7
STEP 4 - GROUNDING BROWN .....	7
STEP 5 - LIGHTNING THE CANVAS.....	8
STEP 6 - DARK STRUCTURES.....	9
STEP 7 - FINAL TOUCHES.....	10
THE TRACING METHOD .....	12
GRIDDING INSTRUCTIONS .....	13
TECHNIQUE REFERENCES .....	14

---

Copyright © The Art Sherpa LLC, 2023. All Rights Reserved.

The content of this chapter, created and published by Cinnamon Cooney of The Art Sherpa LLC, is protected under international copyright laws. This material, including but not limited to text, images, paintings, and instructional content, is solely provided for the personal use of students for learning purposes.

No part of this material may be reproduced, distributed, displayed, transmitted, or otherwise used without the prior written permission of Cinnamon Cooney of The Art Sherpa LLC. This prohibition extends to both commercial and non-commercial uses. Any unauthorized use may infringe upon the intellectual property rights of The Art Sherpa LLC and could be subject to legal penalties.

By accessing, reading, or otherwise using this material, you, the student, agree to respect the intellectual property rights of The Art Sherpa LLC, and understand that this material is for your personal use and learning only.

It is your responsibility to understand and comply with all applicable local, state, national, and international laws when using this copyrighted material. All rights related to distribution, including the text and imagery within this work, are retained by Cinnamon Cooney, The Art Sherpa LLC.

For permission requests or inquiries, please contact The Art Sherpa LLC at [support@theartsherpa.com](mailto:support@theartsherpa.com).

Use policy

Student Use Policy of The Art Sherpa LLC

**Personal Use:** Students are allowed to print out the material provided by The Art Sherpa LLC for personal, at-home use. This includes studying and practicing techniques as presented in the material.

**Private Parties:** Students are permitted to make copies of the material for private parties, provided no money is exchanged in relation to the provision or use of the material. The use of the material is only for the purpose of facilitating the personal enjoyment and learning of painting within the confines of the private party.

**Charitable Organizations:** Libraries, educational institutions, and other non-profit organizations that exist to serve the community may request permission to print copies of the material for use in their efforts to help others. Such permission must be obtained directly from The Art Sherpa LLC at [support@theartsherpa.com](mailto:support@theartsherpa.com).

**Painting Parties for Profit:** If a student, individual, or business wishes to use the material for painting parties or events where profit is involved, a license must be purchased from The Art Sherpa LLC. This license allows the distribution of the material for the single business or single party only. It does not permit publication of the material in any other way, form, or through any other medium.

Any use of the material not expressly permitted in this Student Use Policy may infringe upon the intellectual property rights of The Art Sherpa LLC and could be subject to legal penalties



# Sherpa FORWARD:

I am resolved to do more to help teach art than demonstrate how to paint art and this document is a step by step written description of brushes, colors and mixes, techniques and explanations taken directly from the tutorial. It is provided to you as a resource to assist you in your art journey. It is best viewed in outline format to allow for ease in navigation between sections. We hope to prepare a printed version of all of those documents that you will be able to purchase which will include technical resources not available to you at this time about color mixes, techniques, brushes, materials, and all things art.

Traceables and grid resources for this tutorial can be found at [theartsherpa.com](https://theartsherpa.com).

Keep in mind that brush sizes are not standard across the art brush industry. The most important thing to look for is not the brand of brush I use, but the shape of the brush head, it is a bright, or a filbert, or a hog. Brushes get bigger as the numbers get bigger, and it is not uncommon for beginners to fear using too big of a brush. Use what you have, what is most comfortable for you, explore your options, don't fix what isn't broken, and learn what works for you.

---

*It is abstract art which means that the image representation will be a slight, partial, or complete departure from reality.*

---

We sincerely hope that you enjoy your experience with The Art Sherpa and look forward to seeing your completed paintings. Please do not hesitate to contact us at [support@theartsherpa.com](mailto:support@theartsherpa.com) if you require assistance.

You can join the The Art Sherpa Official group at and please post your paintings there:  
<https://www.facebook.com/groups/TheArtSherpa>



*Grab your paint, get your brushes and let's go!*

---

# Day 24: Paint and Tool Guide

Use this paint legend below to understand the symbols that I use to give you important painting information.

---

## PAINT:

- Cadmium Red Medium = CRM
- Quinacridone Magenta = QM
- Cadmium Yellow Medium = CYM
- Phthalo Green = PG
- Burnt Sienna = BS
- Mars Black = MB
- Titanium White = TW
- Hansa Yellow Light = HYL

## BRUSHES:

- Large Trowel Palette Knife
- Small Diamond Palette Knife

## TOOLS:

- 8x8 Canvas  
(If you notice that your canvas started to warp, as sometimes happens, just turn the canvas over and put it back side forward on your easel, then mist the back of the canvas. It usually resolves itself. Let it dry before you proceed.)
- Optional: StayWet Palette

## SYMBOL GUIDE:

- > Less than previous amount
- < More than previous amount
- + Equal amount

## TECHNIQUES YOU WILL USE IN THIS PAINTING:

- Color Theory
- Expressive
- Being Painterly and Loose
- Atmospheric Perspective
- Finding Value
- Directionality
- Blending Wet into Wet
- Color Mixing
- Implying Motion

# Video Chapter Guide

Below are the timestamps chapters we inserted in the tutorial video so that you can easily coordinate using the book and the tutorial video simultaneously.

---

STEPS:	TIME:	DESCRIPTION:
Intro	00:00	Intro
Step 1	02:19	Colored Background
Step 2	07:52	Green Harmony
Step 3	10:11	Joyful Yellow
Step 4	12:00	Grounding Brown
Step 5	13:17	Lightening The Canvas
Step 6	15:00	Dark Structures
Step 7	18:50	Final Touches
	21:28	Sign

## Step 1 - Colored Background

Timestamp 2:19

### EVENLY BROWNE



#### PAINT:

- Cadmium Red/Yellow Medium = CRM, CYM
- Burnt Sienna = BS • Titanium White = TW

#### BRUSHES:

- Trowel Palette Knife

#### COLOR MIXES:

- Warm Brown = BS + CYM + CRM

#### STEP DISCUSSION:

Load the Palette Knife with Titanium White, and mix in a bit of the **Warm Brown mix**. Starting in the top right corner, scrape the knife downward to cover the canvas. You will need to go over the same space several times to cover it. It is okay if the paint is a bit varied, you can use a circular motion to blend any hugely obvious variations on the canvas. We are just ensuring that all the white of the canvas is loosely covered.

Wipe the knife off on a towel, rinse it in clean water, and dry it.

Dry the surface before continuing to the next step.

## Step 2 - Green Harmony

Timestamp 7:52

### GREEN AS GRASS



#### PAINT:

- Cadmium Yellow Medium = CYM • Phthalo Green = PG
- Burnt Sienna = BS • Titanium White = TW

#### COLOR MIXES:

- Dark Green = PG + BS • Vibrant Green = CYM > PG > BS
- Creamy Green = TW > CYM > PG > BS

#### STEP DISCUSSION:

Mix just a touch of the **Dark Green mix** to Cadmium Yellow Medium to create the Vibrant Green mix. Begin adding this color to the upper left quadrant of the canvas. Holding the knife flat to the surface, skip the paint onto the surface with upward and downward strokes.

Soften the color out as you move down to the bottom left quadrant, by blending it into the background wet into wet.

Then, use the **Creamy Green mix**, and blend it, wet into wet, in the background on the left side. Also use this color to knock back some of the darker green on the surface.

You should have a bit of a "U" shape of green on the left.

Wipe the knife off on a towel, rinse it in clean water, and then dry it.

#### BRUSHES: • Small Diamond Palette Knife



## THE ART SHERPA PATRONAGE

Check out our exciting  
patron program!

An exclusive place where  
The Art Sherpa brings you  
awesome art content and  
fabulous perks!

THE **ART**  
SHERPA

Join the Community Now:  
[www.TheArtSherpa.com/patron](http://www.TheArtSherpa.com/patron)

## Step 3 - Joyful Yellow

### YELLO?

Timestamp 10:11



#### PAINT:

- Cadmium Yellow Medium = CYM
- Phthalo Green = PG • Burnt Sienna = BS
- Titanium White = TW • Hansa Yellow Light = HYL

#### BRUSHES:

- Small Diamond Palette Knife

#### COLOR MIXES:

- Vibrant Green = CYM > PG > BS
- Yellow Green = HYL > CYM > PG > BS

#### STEP DISCUSSION:

Add Hansa Yellow Light to the **Vibrant Green mix** to create a Yellow Green mix. Load that on the right side of the knife and scrape it down in the middle of the canvas.

Add a bit of the **Yellow Green mix** to Titanium White. Lightly layer that over the right side and the bottom of the paint you just laid down. Then, skip some of this color over the green in the upper left quadrant.

Skip a bit of the **Yellow Green mix** onto the left side of the canvas at about the midway point.

Wipe the knife off on a towel, rinse it in clean water, and then dry it.

## Step 4 - Grounding Brown

### A LITTLE GOES A LONG WAY

Timestamp 12:00



#### PAINT:

- Cadmium Red Medium = CRM
- Cadmium Yellow Medium = CYM

- Burnt Sienna = BS • Titanium White = TW

#### BRUSHES:

- Small Diamond Palette Knife

#### COLOR MIXES:

- Warm Brown = BS + CYM + CRM

#### STEP DISCUSSION:

Use the tip of the knife to add some of the **Warm Brown mix** to a couple places on the canvas. These marks are mostly on the left side, with one being closer to the center. Wipe the knife off on a towel, rinse it in clean water, and then dry it.

Use the clean knife to blend it in slightly to knock it back into the background a bit. Move the knife across in both directions, and then down. Wipe the knife off on a towel, rinse it in clean water, and then dry it.

Then, add Titanium White in the bottom right quadrant to elevate the balance.

## Step 5 - Lightning The Canvas

Timestamp 13:17

### FROSTING THE CAKE



#### PAINT:

- Cadmium Yellow Medium = CYM
- Phthalo Green = PG
- Burnt Sienna = BS
- Titanium White = TW

#### BRUSHES:

- Small Diamond Palette Knife

#### COLOR MIXES:

- Creamy Green = TW > CYM > PG > BS

#### STEP DISCUSSION:

Load Titanium White onto the right side of the knife and skip that down the right side of the canvas. Angle a few strokes diagonally on this side of the canvas as well.

Layer the **Creamy Green mix** onto the brown spots to knock them back, but leave the one on the left side alone. Wipe the knife off on a towel, rinse it in clean water, and then dry it.

## Step 6 - Dark Structures

Timestamp 15:00

### BACK TO EARTH



#### PAINT:

- Cadmium Yellow Medium = CYM
- Phthalo Green = PG
- Burnt Sienna = BS
- Titanium White = TW
- Hansa Yellow Light = HYL

#### BRUSHES:

- Small Diamond Palette Knife

#### COLOR MIXES:

- Dark Green = PG + BS
- Vibrant Green = CYM > PG > BS
- Yellow Green = HYL > CYM > PG > BS

#### STEP DISCUSSION:

Skip a bit of the **Dark Green mix** above the brown spot on the left side of the canvas. Scrape down a bit of this color at the bottom area of the yellow that

is in the center of the canvas. Then, scrape horizontally in both directions, and also upward.

Curve little bricquette type structures under that last mark, using a touch and release method.

Left load the same color and apply the same touch and release brick structure above the dark green marks on the left. Wipe the knife off on a towel, rinse it in clean water, and then dry it.

After that, left load Titanium White, and apply a thicker application of it at the bottom

of the two green structures. Wipe the knife off on a towel, rinse it in clean water, and then dry it.

Load Mars Black on the toe of the knife and add it to the right side of both green structures. Use the edge of the knife, and tap several thin lines at the bottom right and top left of the structure in the center. Then, left load the knife and tap these same lines at the bottom of the left structure. Wipe the knife off on a towel, rinse it in clean water, and then dry it.

Add a very thick application of the **Vibrant Green mix** on the left structure, using a couple strokes of the touch and release method.

Combine the **Vibrant Green mix** and the **Yellow Green mix** together. Then, add a very thick application of that color on both structures, again, using the touch and release method. Wipe the knife off on a towel, rinse it in clean water, and then dry it.

## Step 7 - Final Touches

Timestamp 18:50

### PRETTY IN PINK



dry it.

Apply a thick application of the **Pink mix** onto the top structure, and in the bottom left quadrant. Wipe the knife off on a towel, rinse it in clean water, and then dry it.

Combine the **Light Pink mix** to more Hansa Yellow Light to create a peachy color. Then, add two pops of color on the upper structure. Wipe the knife off on a towel, rinse it in clean water then dry it.

#### PAINT:

- Cadmium Red Medium = CRM
- Quinacridone Magenta = QM
- Titanium White = TW
- Hansa Yellow Light = HYL

#### BRUSHES:

- Small Diamond Palette Knife

#### COLOR MIXES:

- Light Pink = TW + CRM + QM > HYL
- Dark Pink = CRM + QM > HYL

#### STEP DISCUSSION:

Load the **Light Pink mix** on the toe of the knife. Apply thick applications of this color and tap a few marks on the right structure. Also add a couple marks in the bottom left side of the canvas. Wipe the knife off on a towel, rinse it in clean water, and then

# WATERCOLOR WEDNESDAYS

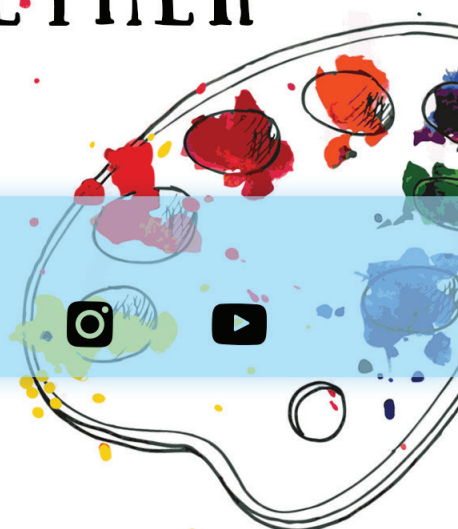
**FREE** weekly watercolor  
live stream  
virtual art class!  
**7:00PM** EST

Watch directly from  
TAS Facebook  
page each week.

ALL skill levels welcome.  
Bring your watercolors  
and let's

**RELAX &  
CHILL OUT  
TOGETHER**

THE ART  
SHERPA



## THE TRACING METHOD

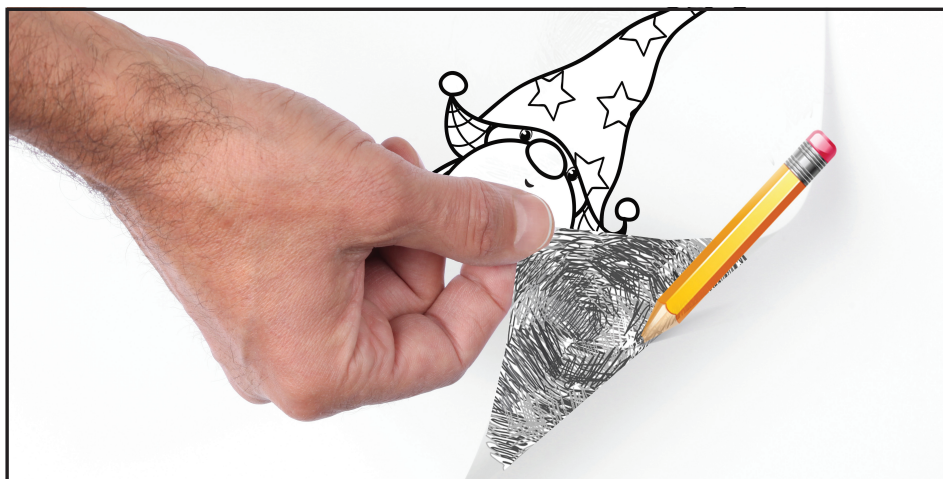
- Adjust the size to fit your surface and be sure to check your printer settings to see if the final size reflects the size you need.



see that your transfer is happening. If not check if your rubbing is too thin or that your pressure is not too light. After you are done tracing the lines, remove your traceable and you should have a copy of the line art on your canvas.



- Rub the back with graphite or use Saral paper and skip this step.
- Be sure to rub the back of your paper on the side without the lines drawing using a HB pencil.
- Hold up to window light to make sure graphite covers all the lines of the subject drawing.
- Test your Saral paper to make sure the color you are using is going to show on the canvas.
- Tape your paper on your surface to transfer with tape to keep it from moving. If you are using saral paper make sure you have both sheets taped down and the transfer side of the Saral paper will be facing your surface. Carefully, with medium pressure, redraw over every line. You can lift one corner of paper to



## GRIDDING INSTRUCTIONS:

The gridding method allows you to dip your toe into drawing without being in the deep end of the drawing pool on day one. For our purposes, the gridding method has been worked out for you. In this example, we have an 8 x 8 canvas and the example is based on a one-inch square grid with everything of equal ratio. On your 8 x 8 canvas, you will make a mark using your chalk tool and a T-square ruler at every 1 inch point both horizontally and vertically. The T-square will help ensure that your lines are straight.

To draw the grid your canvas must be dry and it's advisable that it is also cool. You should use chalk that is wax or oil free. It must be pure chalk. I use a Dritz fabric-marking tool because it does fine lines easily and removes well from the canvas. There are also chalk pencils available or you could use chalkboard chalk. While I will always share with you the tools and equipment that I am using, you are welcome to deviate from that any time you feel something else is best for you.

Something that I have learned especially with complex images is that it can be easy to get lost in the grid. If you find yourself

unsure, go back and check to make sure that the square you are marking on matches the square in your reference. After you master this method, you will be able to use gridding to transfer any image from a reference to your canvas.

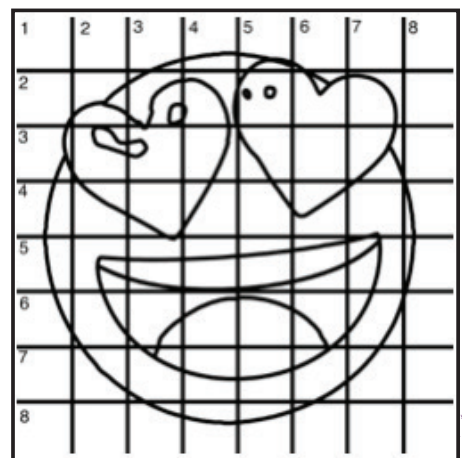
Number your columns 1 - 8, left to right, and your rows 1 - 8 from the top to the bottom.

Find the first row that the contour line of your image enters and exits and duplicate only what you see in that one single square. Continue through the entire image square by square transferring, the contour lines of the subject with chalk on your canvas. When you have duplicated the subject from your reference to your canvas, you will be done.

You can remove chalk easily by taking a soft brush and getting it damp with clean water. Gently brush over the lines you wish to remove and they will lift.

If you prefer a different size there are many great resources out there that involve math about how to scale. I do not teach math for many good reasons and I could count them all for you, but that would be doing math. The resources out there for that information and those mathematical formulas exist online in copious amounts. Explained beautifully and if you are choosing to paint different sizes than we are utilizing in this mini book, I highly recommend finding one of those formulas and mastering it. Short of that, buy a 8 x 8 canvas to match the free grid for this project.

**HERE IS AN EXAMPLE OF A 8 X 8 CANVAS; YOU CAN DO A 1" GRID ON ANY SIZE CANVAS.**



## TECHNIQUE REFERENCES:

### BLENDING WET INTO WET

Create transitions from one color to another, or one value to another, in acrylic painting, by blending colors together with the brush on the canvas while both are still wet. Mastering a blend like this is also essential for acrylic painting. In general, blending requires a soft pressure with a bit of urgency because it must be accomplished before the paint is dry. If you are in very dry studio conditions, such as air conditioning or dry heating in winter, your paint may dry out faster than you can blend it. No worries...there are mediums called retarders that you can add to the paint to slow the drying time.

### BLOCKING IN

Paint in the shape with a color, without detail.

### CONTOUR

Following the outer lines of an object or subject with your brush or tool.

### COOL COLOR

Colors on the cool side of a color wheel. Blues, greens and purples. These colors shouldn't visually feel cool to the eye. They often make up objects in our real world that are cool like ice or the green in nature. These colors tend to recede visually and give a sense of distance.

### CONTOUR PAINTING

Use the brushstroke to define the outline of the form. The brushstrokes are long and smooth and help us express the form and line of the object.

### FEATHERED BLENDING

Create a softened edge by gently brushing on the toe of the head of the brush allowing the bristles to feather out visually defusing the stroke.

### FINE LINE WORK

Taking paint that is made more fluid and a fine line brush to create brush Strokes that are delicate and elegant in nature. This is often used for hair, delicate grasses or natural elements, edged highlights.

### GLAZING

Taking thin transparent coats of paint over another coat of dry paint. The transparency of the paint allows the color from the paint underneath to affect the paint on top. This is another way for artists to make transitions with acrylic paint. Some paint is naturally transparent because of how pigmentmented it is. Colors like quinacridone magenta or phthalo blue are very transparent. Opaque pigments can be made transparent using a medium for glazing.

### LAYERING

This is a very important part of acrylic painting. You can layer wet paint over wet paint. You can layer dry paint over dry paint. You can glaze over dry paint to layer also. Layering can help you build texture and depth in a painting. Understanding that techniques are built up in layers will help you move away from the magical brush thinking. You remember seeing cartoons paint a tunnel in one stroke with a single brush? As regular humans we can't do that to get these effects, we need to layer the paint. Once you embrace this thinking, the depth of your painting will improve greatly.

### LOOSE, EXPRESSIVE AND PAINTERLY

When you paint showing the brush stroke. The painting has a freshly captured feel. This technique gives the impression of capturing a moment in time. It has qualities where the color stroke in texture defines the artwork instead of line.

### LOOSELY MIXED

Taking two colors and mixing them together with both colors still evident in the mix and brush stroke.

### PAINTERLY

Free flowing and expressive brush strokes. Painterly expression of art generally allows the medium and the brush strokes to show instead of hiding them through blending and careful placement.

### S STROKES

Being able to create compound curves as strokes is

a very important technique in painting. Most of the natural world will require your ability to execute it as a stroke. It's a good idea to practice making bold S strokes and delicate S Strokes.

## SCUMBLING

Scumbling certainly has some dry brushing to it but involves a more randomized circular brush stroke. Be careful when you scumble, you don't want to press so hard that you break the heel of the brush. In scumbling, just like in dry brushing, we won't be using a lot of water in the brush. We are going to want to move the brush around in a random and circular motion creating no sense of a particular line or direction.

## SMOOTHLY BLENDED OR TIGHT PAINTING

This is when you smooth the paint and try to hide the brush Strokes and transitions. When you hear an artist talking about a particular painter being tight, what they're speaking of is the way that this artist is able to hide the medium method of the painting. Acrylic blending is one of the more frustrating techniques for new artists.

## THOROUGHLY MIXED

Take two colors and thoroughly incorporate them so they make a smooth, even secondary color with no sign of the two colors used to create it.

## TRANSITIONAL MIXING

There are many ways to blend acrylic paint creating tonal and value transitions through the hues. When you have two very different colors you can create hues that are half shades by mixing them together and biasing the mix to create a subtle transition.

## UNDERPAINTING

Loose large fields of color that future layers of painting will build on.

## WARM COLOR

These colors are on the warm side of the wheel such as red, yellow and orange. Warm colors remind us of things like fire and sunlight. They tend to come forward visually and pull the viewer in.

## RESOURCES

- The best resource for this book is to use it with the YouTube video. Additionally, I have many resources to help new painters achieve their dreams of being creative. I've made over a thousand videos and chances are I have a video that will help you with your specific challenges.
- Be sure to check out the "Where to Start Acrylic Painting with the Art Sherpa" playlist on Youtube.
- Search for videos on the website.
- Use the traceable - it is NOT cheating.
- Join the Art Sherpa Official Facebook group for support.
- Come to live streams and ask questions.

## WHAT TO DO WITH YOUR FINISH PIECE

*As an artist, there's still a lot to think about.*

*Do you varnish? Believe it or not, varnishing is optional with acrylic painting. In my opinion it's best only to do so in good weather in a dust free space following the instructions of the specific varnish for acrylic painting exactly. Varnish is good because it does protect and unify the finish of a painting, but it is not required.*

*Allow your painting a few days to cure and harden. Acrylic paintings do dry quickly but they still continue to cure a few days after you're finished even with thin applications of paint. Taking the time to allow your paintings to cure will help them be more resilient through the framing and hanging process. These days you don't need to be a professional to frame or hang your paintings. Frames and ready to hang options are available at your local craft and art store.*

*When acrylic paint is warm, it gets soft, so when a painting is near the warmth of a fireplace you wouldn't want to add decorations that would touch it because they could leave an impression. It's perfectly fine to hang your artwork over the fireplace and change it out seasonally like I do. It's just important to be aware of hazards and fire safety. Also knowing that acrylic paintings can become a little softer when they're warm will prevent you from accidentally having a boo boo. Perhaps your Elf on the Shelf doesn't need to sit on the edge of the frame or lean against the painting if your art is in a warm spot. Properly cared for, acrylic paint will never become wet again or lose its cure and it will always remain finished and dry. This is the nature of plastics.*



# FOLLOW THE ART SHERPA

**WEBSITE:** <https://theartsherpa.com/>

**FACEBOOK:** <https://www.facebook.com/TheArtSherpa/>

**INSTAGRAM:** <https://www.instagram.com/theartsherpa>

**PINTEREST:** <https://www.pinterest.com/cinnamoncooney/>



**#THEARTSHERPA**  
**#STEPBYSTEPPAINTING**  
**#ACRYLICPAINTING**



## ABOUT THE ART SHERPA:

Artwork and video is the sole property of The Art Sherpa™ and intended for the students personal education and Enjoyment. For questions regarding using any Art Sherpa painting in a commercial setting [labs@theartsherpa.com](mailto:labs@theartsherpa.com) for all other questions [support@theartsherpa.com](mailto:support@theartsherpa.com)  
Read our full disclosure here that covers partnerships and affiliate links <http://bit.ly/affiliatedisclosureTAS>