

The Art Sherpa Presents

Cute Bumble Bee

Don't Worry, Bee Happy

Name credit to Patron: Bill Pittilo, Pam Spivey



13 Steps

Difficulty: Beginner - 1 Hoot 🦉

Copyright © The Art Sherpa LLC, 2023. All Rights Reserved.

The content of this chapter, created and published by Cinnamon Cooney of The Art Sherpa LLC, is protected under international copyright laws. This material, including but not limited to text, images, paintings, and instructional content, is solely provided for the personal use of students for learning purposes.

No part of this material may be reproduced, distributed, displayed, transmitted, or otherwise used without the prior written permission of Cinnamon Cooney of The Art Sherpa LLC. This prohibition extends to both commercial and non-commercial uses. Any unauthorized use may infringe upon the intellectual property rights of The Art Sherpa LLC and could be subject to legal penalties.

By accessing, reading, or otherwise using this material, you, the student, agree to respect the intellectual property rights of The Art Sherpa LLC, and understand that this material is for your personal use and learning only.

It is your responsibility to understand and comply with all applicable local, state, national, and international laws when using this copyrighted material. All rights related to distribution, including the text and imagery within this work, are retained by Cinnamon Cooney, The Art Sherpa LLC.

For permission requests or inquiries, please contact The Art Sherpa LLC at support@theartsherpa.com.

Use policy

Student Use Policy of The Art Sherpa LLC

Personal Use: Students are allowed to print out the material provided by The Art Sherpa LLC for personal, at-home use. This includes studying and practicing techniques as presented in the material.

Private Parties: Students are permitted to make copies of the material for private parties, provided no money is exchanged in relation to the provision or use of the material. The use of the material is only for the purpose of facilitating the personal enjoyment and learning of painting within the confines of the private party.

Charitable Organizations: Libraries, educational institutions, and other non-profit organizations that exist to serve the community may request permission to print copies of the material for use in their efforts to help others. Such permission must be obtained directly from The Art Sherpa LLC at support@theartsherpa.com.

Painting Parties for Profit: If a student, individual, or business wishes to use the material for painting parties or events where profit is involved, a license must be purchased from The Art Sherpa LLC. This license allows the distribution of the material for the single business or single party only. It does not permit publication of the material in any other way, form, or through any other medium.

Any use of the material not expressly permitted in this Student Use Policy may infringe upon the intellectual property rights of The Art Sherpa LLC and could be subject to legal penalties



FOLLOW THE ART SHERPA



WEBSITE:

<https://theartsherpa.com/>

FACEBOOK:

<https://www.facebook.com/TheArtSherpa/>

INSTAGRAM:

<https://www.instagram.com/theartsherpa>

PINTEREST:

<https://www.pinterest.com/cinnamoncooney/>



#THEARTSHERPA
#STEPBYSTEPPAINTING
#ACRYLICPAINTING

ABOUT THE ART SHERPA:

Artwork and video is the sole property of The Art Sherpa™ and intended for the students personal education and Enjoyment. For questions regarding using any Art Sherpa painting in a commercial setting labs@theartsherpa.com for all other questions support@theartsherpa.com Read our full disclosure here that covers partnerships and affiliate links <http://bit.ly/affiliatedisclosureTAS>

TABLE OF CONTENTS

PAINT AND TOOL GUIDE	5
Step 1 - Colored Ground	6
Step 2 - Sketch	7
Step 3 - Background	8
Step 4 - Splatter	9
Step 5 - Filling In The Figure	10
Step 6 - Wings	11
Step 7 - Shading And Details	12
Step 8 - Hair	13
Step 9 - Fur Details	14
Step 10 - Facial Features	15
Step 11 - Further Facial Details	16
Step 12 - Yellow Details	17
Step 13 - Finishing Details	18
Traceable	19

PAINT AND TOOL GUIDE

Use this paint legend below to understand the symbols that I use to give you important painting information.

PAINT

- Cadmium Red Medium
- Cadmium Yellow Medium
- Burnt Sienna
- Mars Black
- Titanium White
- Yellow Ochre

BRUSHES

- X-Large Synthetic Flat
- Large Synthetic Angle
- Large Hog Round
- Large Synthetic Round
- Medium Synthetic Filbert Grainer
- Medium Synthetic Bright
- X-Small Synthetic Round

TOOLS

- 8x8 Canvas (If you notice that your canvas started to warp, as sometimes happens, just turn the canvas over and put it back side forward on your easel, then mist the back of the canvas. It usually resolves itself. Let it dry before you proceed.)
- Optional: Sta-Wet Palette
- Chalk Pencil or Watercolor Pencil

TECHNIQUES

- Color Theory
- Expressive Painting Strokes
- Being Painterly and Loose
- Atmospheric Perspective
- Finding Value
- Dry Brushing
- Directionality
- Blending Wet into Wet
- Color Mixing
- Fur
- Implying Motion

Step 1 - Colored Ground

Timestamp 3:35

“Black Before Yellow”

PAINT

- Mars Black

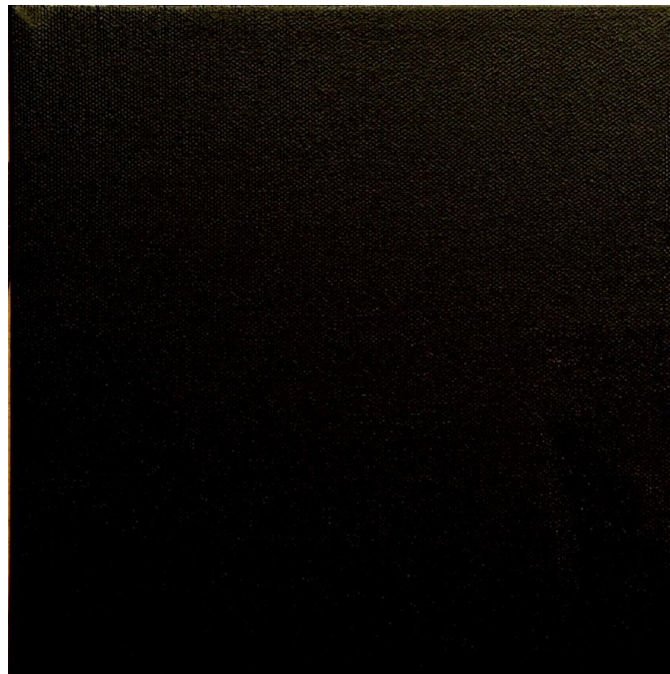
BRUSHES & TOOLS

- X-Large Synthetic Round

STEP DISCUSSION

In this step, paint the entire canvas with Mars Black. Smooth the paint somewhat by applying long strokes, vertically and horizontally. Rinse the brush.

Dry the surface before continuing to the next step.



Step 2 - Sketch

Timestamp 5:27

“Bee Happy“

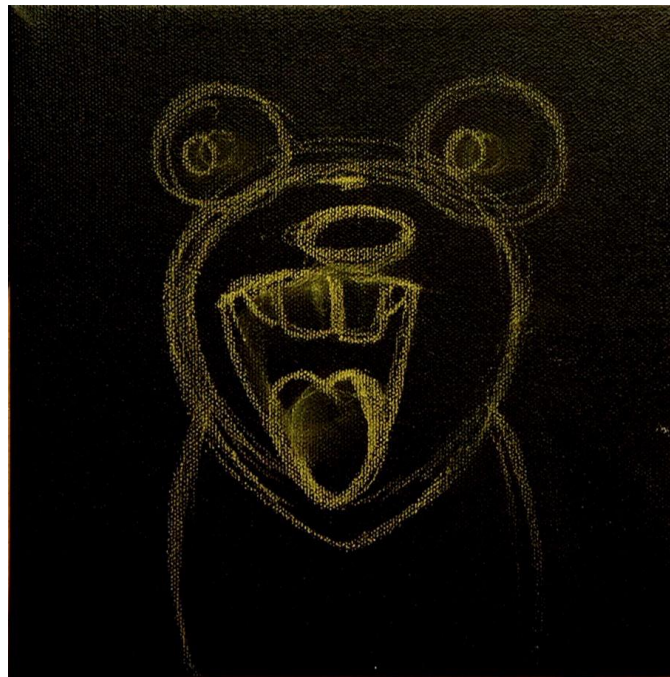
PAINT

BRUSHES & TOOLS

- Chalk Pencil or Watercolor Pencil

STEP DISCUSSION

I chose to freehand this image but I have also provided a traceable if you prefer to use that method. There is no right or wrong way to get your image on the canvas. You can grid, transfer, or freehand, whatever makes you the most comfortable. If you are free handing, you have the picture that follows this step, and the traceable to assist you. I drew in only the major objects using a Chalk Pencil.



Step 3 - Background

Timestamp 10:15

“Bee-hind”

PAINT

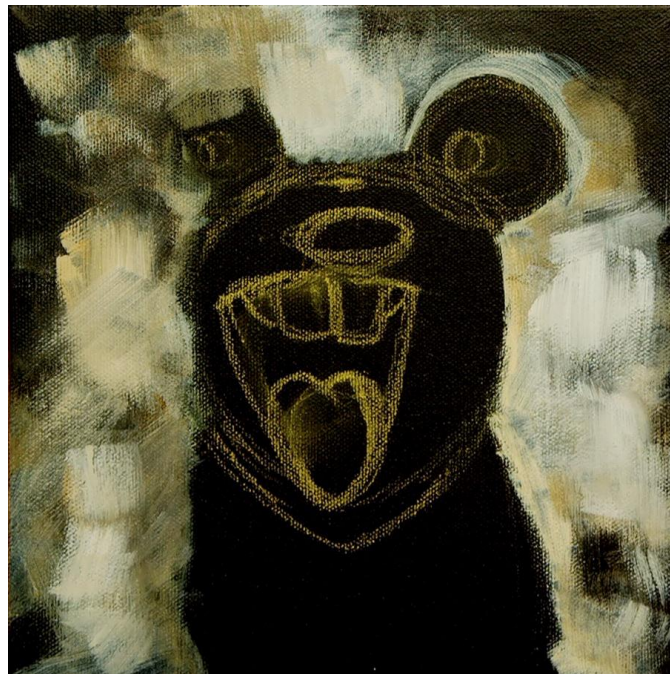
- Mars Black
- Titanium White
- Yellow Ochre

BRUSHES & TOOLS

- Large Synthetic Angle

STEP DISCUSSION

Create a dynamic abstract background for the bee by applying two colors over a dark base layer and letting some of it show through. This will allow you to seamlessly layer the bee right over top, bringing him to the foreground. Rinse the brush.



Step 4 - Splatter

Timestamp 13:59
“Whack A Bee”

PAINT

- Yellow Ochre

BRUSHES & TOOLS

- Large Synthetic Round
- Large Hog Round

STEP DISCUSSION

Make a splatter effect on the background with two brushes and the whack method using thinned paint. Wipe off the dots on the bee with a wet brush. Rinse the brush and dry the surface well before the next step.



Step 5 - Filling In The Figure

Timestamp 16:23
“Eyes And Teef”

PAINT

- Cadmium Red Medium
- Mars Black
- Titanium White
- Yellow Ochre

BRUSHES & TOOLS

- Large Synthetic Round

STEP DISCUSSION

Paint the eyes, teeth, tongue, mouth, and wings of the bee and adjust the features as needed. Rinse the brush.

Dry the surface before continuing to the next step.



Step 6 - Wings

Timestamp 21:32

“Flight Of The Bee Guy”

PAINT

- Cadmium Yellow Medium
- Titanium White

BRUSHES & TOOLS

- Large Synthetic Round

STEP DISCUSSION

Paint the wings lightly with a damp brush and a light color. Curve the strokes near the edges. Vary the color slightly. Rinse the brush.



Step 7 - Shading And Details

Timestamp 23:14

“Adding Character“

PAINT

- Cadmium Red Medium
- Mars Black
- Titanium White
- Yellow Ochre

BRUSHES & TOOLS

- Large Synthetic Round

STEP DISCUSSION

Paint the eyes, nose, tongue, and mouth of the bee with different shades of grey and black and red. Blend the colors and adjust the shapes as needed. Rinse the brush.



Step 8 - Hair

Timestamp 29:19

“Be(e)d Head”

PAINT

- Mars Black

BRUSHES & TOOLS

- Large Synthetic Round
- Medium Synthetic Filbert Grainer
- Medium Synthetic Bright

STEP DISCUSSION

Create fuzzy edges on the bee with thinned black paint and a brush. Overlap the fuzz on the wings slightly. Rinse the brush.

Dry the surface before continuing to the next step.



Step 9 - Fur Details

Timestamp 33:20

“Fur Or Hair Or Fuzz”

PAINT

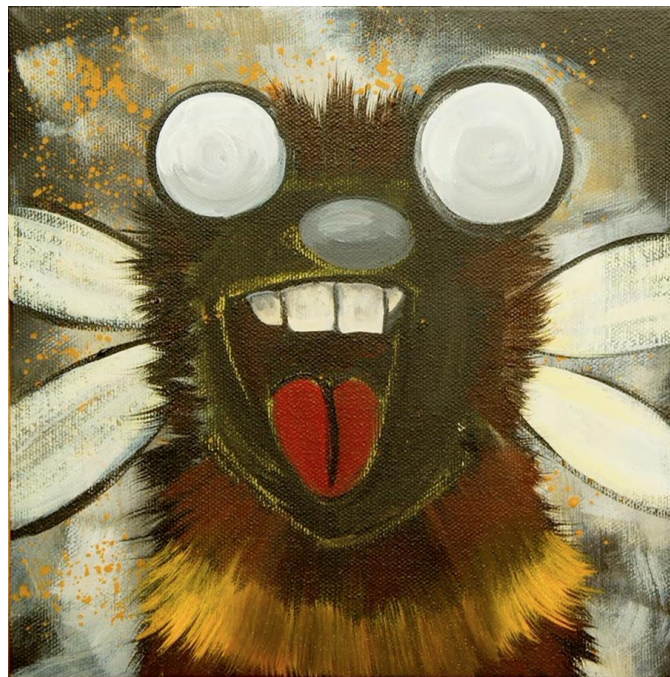
- Cadmium Red Medium
- Cadmium Yellow Medium
- Burnt Sienna
- Mars Black
- Yellow Ochre

BRUSHES & TOOLS

- Medium Synthetic Filbert Grainer

STEP DISCUSSION

Paint the fuzzy stripes on the bee with brown and yellow orange colors. Add some brown on the head and a shadow on the middle stripe. Rinse the brush.



Step 10 - Facial Features

Timestamp 37:26
“Bright Smile”

PAINT

- Cadmium Red Medium
- Cadmium Yellow Medium
- Mars Black
- Titanium White

BRUSHES & TOOLS

- Large Synthetic Round
- Medium Synthetic Filbert Grainer

STEP DISCUSSION

Outline and fill the face of the bee with yellow-orange and black colors. Use different brushes and strokes to create fuzz and highlights. Paint the eyes and nose with details.

Dry the surface before continuing to the next step.



Step 11 - Further Facial Details

Timestamp 44:19
“Fun Fun Fun”

PAINT

- Cadmium Red Medium
- Cadmium Yellow Medium
- Mars Black
- Titanium White
- Yellow Ochre

BRUSHES & TOOLS

- Large Synthetic Round

STEP DISCUSSION

Paint the tongue red, the teeth white, and the eyes black. Add highlights and shadows to the tongue and teeth using various shades of those colors. Adjust the eyes as needed.



Step 12 - Yellow Details

Timestamp 48:22

“Even Fuzzier”

PAINT

- Cadmium Red Medium
- Cadmium Yellow Medium

BRUSHES & TOOLS

- Large Synthetic Round
- Medium Synthetic Filbert Grainer

STEP DISCUSSION

Use different shades of yellow orange to highlight and shade the mouth and the eyes. Use a reddish orange to line the iris of the eyes. Use a light yellow to highlight the face fuzz and blend it with the black edges. Rinse the brush.

Dry the surface before continuing to the next step.



Step 13 - Finishing Details

Timestamp 54:34

“Give It Some Oomph”

PAINT

- Cadmium Red Medium
- Cadmium Yellow Medium
- Burnt Sienna
- Mars Black
- Titanium White
- Yellow Ochre

BRUSHES & TOOLS

- X-Small Synthetic Round
- Large Synthetic Round
- Medium Synthetic Filbert Grainer

STEP DISCUSSION

Use different colors and brushes to add details and highlights to the eyes, mouth, tongue, and fuzz of the bee. Use white to create reflections and contrast. Adjust the pupils and iris as needed. Rinse the brush.

Sign.



Traceable

