

The Art Sherpa Presents

Deer At Sunset Lake

His Majesty

Name credit to Patron: Cynthia Hagan Kelley



19 Steps

Difficulty: Intermediate - 2 Hoot 🦉🦉

Copyright © The Art Sherpa LLC, 2023. All Rights Reserved.

The content of this chapter, created and published by Cinnamon Cooney of The Art Sherpa LLC, is protected under international copyright laws. This material, including but not limited to text, images, paintings, and instructional content, is solely provided for the personal use of students for learning purposes.

No part of this material may be reproduced, distributed, displayed, transmitted, or otherwise used without the prior written permission of Cinnamon Cooney of The Art Sherpa LLC. This prohibition extends to both commercial and non-commercial uses. Any unauthorized use may infringe upon the intellectual property rights of The Art Sherpa LLC and could be subject to legal penalties.

By accessing, reading, or otherwise using this material, you, the student, agree to respect the intellectual property rights of The Art Sherpa LLC, and understand that this material is for your personal use and learning only.

It is your responsibility to understand and comply with all applicable local, state, national, and international laws when using this copyrighted material. All rights related to distribution, including the text and imagery within this work, are retained by Cinnamon Cooney, The Art Sherpa LLC.

For permission requests or inquiries, please contact The Art Sherpa LLC at support@theartsherpa.com.

Use policy

Student Use Policy of The Art Sherpa LLC

Personal Use: Students are allowed to print out the material provided by The Art Sherpa LLC for personal, at-home use. This includes studying and practicing techniques as presented in the material.

Private Parties: Students are permitted to make copies of the material for private parties, provided no money is exchanged in relation to the provision or use of the material. The use of the material is only for the purpose of facilitating the personal enjoyment and learning of painting within the confines of the private party.

Charitable Organizations: Libraries, educational institutions, and other non-profit organizations that exist to serve the community may request permission to print copies of the material for use in their efforts to help others. Such permission must be obtained directly from The Art Sherpa LLC at support@theartsherpa.com.

Painting Parties for Profit: If a student, individual, or business wishes to use the material for painting parties or events where profit is involved, a license must be purchased from The Art Sherpa LLC. This license allows the distribution of the material for the single business or single party only. It does not permit publication of the material in any other way, form, or through any other medium.

Any use of the material not expressly permitted in this Student Use Policy may infringe upon the intellectual property rights of The Art Sherpa LLC and could be subject to legal penalties



FOLLOW THE ART SHERPA



WEBSITE:

<https://theartsherpa.com/>

FACEBOOK:

<https://www.facebook.com/TheArtSherpa/>

INSTAGRAM:

<https://www.instagram.com/theartsherpa>

PINTEREST:

<https://www.pinterest.com/cinnamoncooney/>



ABOUT THE ART SHERPA:

Artwork and video is the sole property of The Art Sherpa™ and intended for the students personal education and Enjoyment. For questions regarding using any Art Sherpa painting in a commercial setting labs@theartsherpa.com for all other questions support@theartsherpa.com Read our full disclosure here that covers partnerships and affiliate links <http://bit.ly/affiliatedisclosureTAS>

TABLE OF CONTENTS

PAINT AND TOOL GUIDE	5
Step 1 - Colored Ground	6
Step 2 - Blocking In	7
Step 3 - Sunset	8
Step 4 - Technique Talk	9
Step 5 - Sun Placement And Technique Demo	10
Step 6 - Resetting	11
Step 7 - Horizon	12
Step 8 - Water	13
Step 9 - Background Blending	14
Step 10 - Water Details	15
Step 11 - Beginning Trees	16
Step 12 - Foliage Technique Demo	17
Step 13 - Foliage Details	18
Step 14 - Further Foliage Details	19
Step 15 - Sketch Demo	20
Step 16 - Sketch	21
Step 17 - Blocking It In	22
Step 18 - Fur	23
Step 19 - Tree Details	24
Traceable	25

PAINT AND TOOL GUIDE

Use this paint legend below to understand the symbols that I use to give you important painting information.

PAINT

- Cadmium Red Medium = **CRM**
- Cadmium Yellow Medium = **CYM**
- Ultramarine Blue = **UB**
- Phthalo Green = **PG**
- Burnt Sienna = **BS**
- Dioxazine Purple = **DP**
- Mars Black = **MB**
- Titanium White = **TW**
- Yellow Ochre = **YO**
- Golden's Acrylic Satin Glazing Liquid = **AGL**

BRUSHES

- Large Synthetic Bright
- Small Synthetic Round
- Small Synthetic Bright
- Large Synthetic Angle
- Medium Synthetic Round Blender
- Small Hog D
- Small Hog Round
- Medium Hog Fan
- X-Large Synthetic Flat
- Large Synthetic Round
- Large Hog D
- Medium Synthetic Angle
- Medium Synthetic Round
- X-Small Synthetic Liner
- Medium Synthetic

TOOLS

- 11x14 Canvas (If you notice that your canvas started to warp, as sometimes happens, just turn the canvas over and put it back side forward on your easel, then mist the back of the canvas. It usually resolves itself. Let it dry before you proceed.)
- Optional: Sta-Wet Palette
- Chalk Pencil or Watercolor Pencil
- T-Square Ruler
- Mixed Media Pad
- Artist Tape
- T-Square Ruler

Techniques You Will Use In This Painting

- Color Theory
- Implying Foliage
- Atmospheric Perspective
- Finding Value
- Dry Brushing
- Directionality
- Blending Wet into Wet
- Clouds
- Mirroring Sky in Water
- Setting a Horizon line
- Color Mixing
- Dynamic Light on Water
- Fur

Step 1 - Colored Ground

Timestamp 3:46
“Mellow Yellow”

PAINT

- Yellow Ochre

BRUSHES & TOOLS

- Large Synthetic Bright

STEP DISCUSSION

In this step, paint the entire canvas with Yellow Ochre. Smooth the paint somewhat by applying long strokes, vertically and horizontally. Rinse the brush.

Dry the surface before continuing to the next step.



Step 2 - Blocking In

Timestamp 8:45
“Space Mapping”

PAINT

- Burnt Sienna
- Mars Black
- Titanium White

BRUSHES & TOOLS

- Small Synthetic Round
- Small Synthetic Bright
- T-Square Ruler
- Chalk Pencil or Watercolor Pencil

STEP DISCUSSION

Divide the canvas into equal quadrants. Then loosely sketch in guidelines for the horizon and landmasses.



Step 3 - Sunset

Timestamp 14:04
“Blushing Blending”

PAINT

- Cadmium Red Medium
- Cadmium Yellow Medium
- Satin Glazing Liquid

BRUSHES & TOOLS

- Large Synthetic Angle

STEP DISCUSSION

Paint an ombre sunset that starts lighter and gets slightly darker as you move upward. Use the Satin Glazing liquid to help create the blend. Rinse the brush.

Dry the surface before continuing to the next step.



Step 4 - Technique Talk

Timestamp 17:42

“Stippling”

PAINT

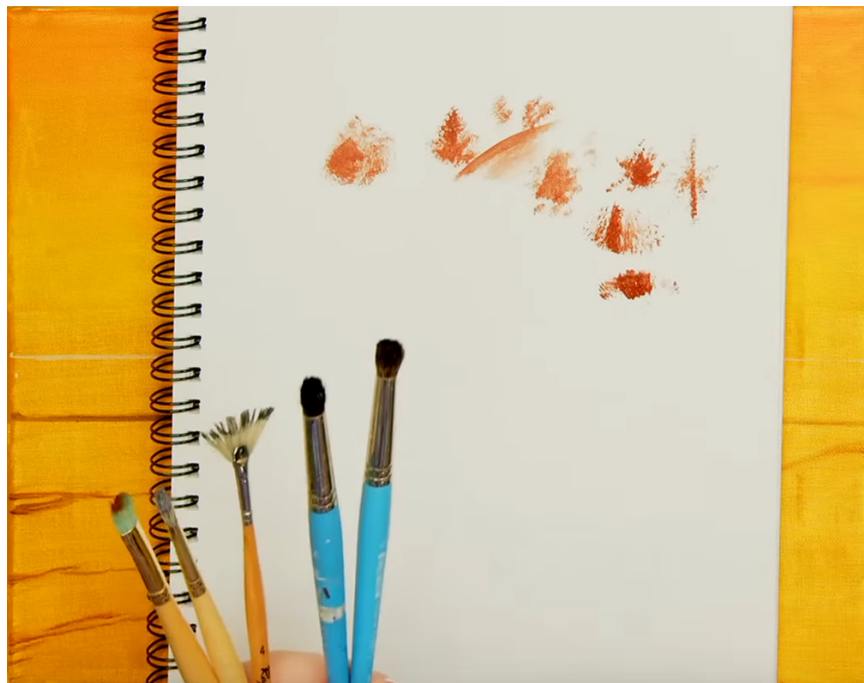
- Burnt Sienna
- Mars Black

BRUSHES & TOOLS

- Medium Synthetic Round Blender
- Small Hog D
- Small Hog Round
- Medium Hog Fan
- Mixed Media Pad

STEP DISCUSSION

In this step we demonstrated how to stipple using various brushes. Rinse the brushes.



Step 5 - Sun Placement And Technique Demo

Timestamp 23:12

“One Challenge, Many Solutions“

PAINT

- Cadmium Red Medium
- Cadmium Yellow Medium
- Ultramarine Blue
- Burnt Sienna
- Titanium White
- Satin Glazing Liquid

BRUSHES & TOOLS

- Small Synthetic Round
- Small Hog D
- Mixed Media Pad
- Chalk Pencil or Watercolor Pencil

STEP DISCUSSION

In this step paint the sun in the upper left quadrant. Then, I demonstrated how to get the various shades of oranges for the horizon trees and various shades of brown-grey for their shadows.



Step 6 - Resetting

Timestamp 28:10

“Sometimes You Gotta Start Over”

PAINT

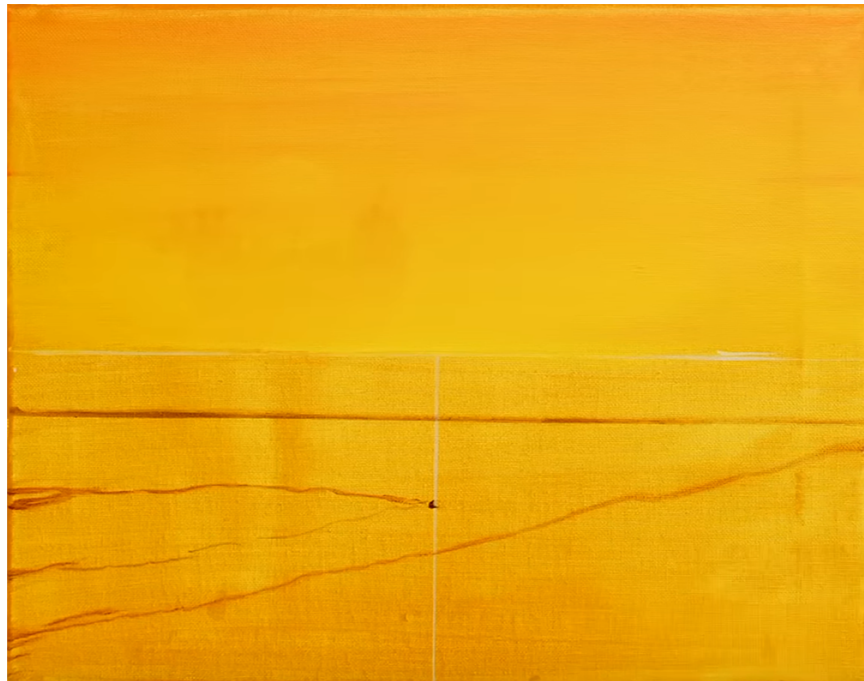
- Cadmium Yellow Medium
- Cadmium Red Medium
- Burnt Sienna
- Titanium White

BRUSHES & TOOLS

- Large Synthetic Round

STEP DISCUSSION

In this step I began painting the trees on the horizon but realized I needed to repaint the sky because the sun was a bit too high. You can skip to the next step.



Step 7 - Horizon

Timestamp 36:38

“Rising Sun“

PAINT

- Cadmium Red Medium
- Cadmium Yellow Medium
- Ultramarine Blue
- Burnt Sienna
- Titanium White
- Satin Glazing Liquid

BRUSHES & TOOLS

- Large Synthetic Round
- Large Hog D

STEP DISCUSSION

Repaint the sun a little lower in the sky. The stipple in the trees along the horizon using the various grey and orange mixes we demonstrated in step 5. You will want these trees to be more in the orange ranges where the sun would be hitting them and more in the brown-grey ranges in the deeper shadows.



Step 8 - Water

Timestamp 50:34

“Smoke On The... Lake“

PAINT

- Cadmium Red Medium
- Cadmium Yellow Medium
- Ultramarine Blue
- Burnt Sienna
- Titanium White
- Yellow Ochre
- Satin Glazing Liquid

BRUSHES & TOOLS

- Medium Synthetic Angle

STEP DISCUSSION

Block in the water using horizontal strokes. Add more white to the mix to lighten the water where the sun would be reflected. Crisp the line along the horizon and add tree shadows into the water. Rinse the brush.

Dry the surface before continuing to the next step.



Step 9 - Background Blending

Timestamp 56:20

“Heavenly Glow”

PAINT

- Cadmium Red Medium
- Cadmium Yellow Medium
- Ultramarine Blue
- Burnt Sienna
- Titanium White
- Satin Glazing Liquid

BRUSHES & TOOLS

- Medium Synthetic Round Blender

STEP DISCUSSION

Use Glazing Liquid, the blue-grey mix and light curled strokes to create the mist at the base of the trees. Next, use horizontal strokes to darken the shadows of the trees on the surface of the water, on either side of the canvas. Then brighten the water where the sun is reflected. Finally create the radial glow around the sun. Rinse the brush.

Dry the surface before continuing to the next step.



Step 10 - Water Details

Timestamp 1:05:07

“Grass And Growth”

PAINT

- Cadmium Red Medium
- Cadmium Yellow Medium
- Ultramarine Blue
- Burnt Sienna
- Titanium White
- Mars Black
- Satin Glazing Liquid

BRUSHES & TOOLS

- Medium Synthetic Angle
- Mixed Media Pad

STEP DISCUSSION

Add the dark shadows onto the smaller landmass first followed by some blue-grey reflections in the water. Then, add the lighter browns on the top of that landmass. Repeat the shadows and brown-orange highlights on the lower landmass. Rinse the brush.

Dry the surface before continuing to the next step.



Step 11 - Beginning Trees

Timestamp 1:14:30

“Let It Grow”

PAINT

- Mars Black

BRUSHES & TOOLS

- Large Synthetic Round
- X-Small Synthetic Liner

STEP DISCUSSION

Paint the two forward tree trunks on the right side of the canvas using black. Also paint a few broken branches near the bottom of them. Rinse the brush.



Step 12 - Foliage Technique Demo

Timestamp 1:18:02

“Grasses”

PAINT

- Cadmium Red Medium
- Cadmium Yellow Medium
- Burnt Sienna
- Titanium White
- Yellow Ochre

BRUSHES & TOOLS

- Medium Synthetic Angle
- Mixed Media Pad

STEP DISCUSSION

In this step I demonstrated the brush strokes and color mixes I use to create a bit more details in the grass. Rinse the brush.



Step 13 - Foliage Details

Timestamp 1:19:50

“Wheat-y”

PAINT

- Cadmium Red Medium
- Cadmium Yellow Medium
- Ultramarine Blue
- Burnt Sienna
- Mars Black
- Titanium White
- Yellow Ochre
- Satin Glazing Liquid

BRUSHES & TOOLS

- Medium Synthetic Angle
- Medium Synthetic Round

STEP DISCUSSION

Using the demonstration in the previous step and the orange mixes to make more detailed grasses on the top of the smaller landmass. Add shadows with the darker colors. Paint highlights on the shoreline. Then edge a black shadow along the shoreline.



Step 14 - Further Foliage Details

Timestamp 1:26:22

“Fall Has Fell”

PAINT

- Cadmium Red Medium
- Cadmium Yellow Medium
- Ultramarine Blue
- Burnt Sienna
- Titanium White
- Yellow Ochre
- Satin Glazing Liquid

BRUSHES & TOOLS

- Medium Synthetic Angle

STEP DISCUSSION

Create grass details on the larger landmass. Keep the colors lighter at the top where the sun will be hitting them and darker at the bottom where they will be in shadow. Use Glazing Liquid as needed. Rinse the brush.

Dry the surface before continuing to the next step.



Step 15 - Sketch Demo

Timestamp 1:34:48

“You Can Do It”

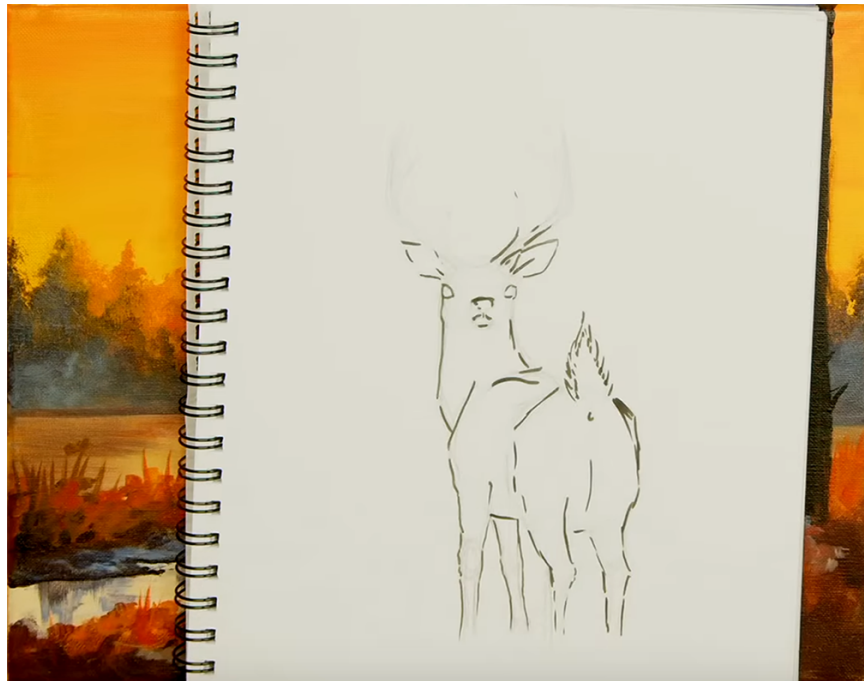
PAINT

BRUSHES & TOOLS

- Pencil or Pen
- Mixed Media Pad

STEP DISCUSSION

In this step I demonstrated how to freehand the image if you choose to do that. Otherwise you can grid or use the traceable.



Step 16 - Sketch

Timestamp 1:46:53

“Doe, A Deer”

PAINT

- Mars Black

BRUSHES & TOOLS

- Medium Synthetic Round
- X-Small Synthetic Liner
- Low Tack Tape
- Pencil or Pen
- Chalk Pencil or Watercolor Pencil

STEP DISCUSSION

Use whatever method that makes you the most comfortable to apply the image onto the canvas. You can use a chalk pencil to grid, transfer, trace or freehand the image. Draw only the main objects with chalk.

Ensure that the surface is dry before continuing to the next step.



Step 17 - Blocking It In

Timestamp 1:59:09

“Deerly Beloved”

PAINT

- Ultramarine Blue
- Burnt Sienna
- Mars Black
- Titanium White
- Satin Glazing Liquid

BRUSHES & TOOLS

- Medium Synthetic Round

STEP DISCUSSION

Block in the deer mostly with black. Then use a lighter color to paint the light areas around the nose, eyes and tail. Rinse the brush.

Dry the surface before continuing to the next step.



Step 18 - Fur

Timestamp 2:06:57

“A-deer-able”

PAINT

- Cadmium Red Medium
- Cadmium Yellow Medium
- Ultramarine Blue
- Burnt Sienna
- Mars Black
- Titanium White
- Yellow Ochre
- Satin Glazing Liquid

BRUSHES & TOOLS

- Medium Synthetic Round
- X-Small Synthetic Liner
- Medium Synthetic D

STEP DISCUSSION

In this step we will rough in the deer first by adding some orange-brown highlights along the back and neck. Then add more detailed elements with the grey-blue colors on the face and tail. Also use the grey to highlight the horns. Darken the shadows with black and adjust the fur with varying shades of color as desired. Rinse the brush.



Step 19 - Tree Details

Timestamp 2:19:12
“Canopy Of Color”

PAINT

- Cadmium Yellow Medium
- Cadmium Red Medium
- Dioxazine Purple
- Mars Black
- Satin Glazing Liquid

BRUSHES & TOOLS

- Small Hog D
- Medium Synthetic Angle
- Medium Synthetic Round
- Mixed Media Pad

STEP DISCUSSION

Refine the tree trunks with black. Then, stipple in a canopy of leaves using varying shades of color that range from purplish-red through to orange.

Sign.



Traceable

