

The Art Sherpa Presents
Autumn Forest Landscape

Autumn Trails

Name credit to Patron: Jennifer Dallas



18 Steps

Difficulty: Challenging - 3 Hoot 🦉🦉🦉

Copyright © The Art Sherpa LLC, 2023. All Rights Reserved.

The content of this chapter, created and published by Cinnamon Cooney of The Art Sherpa LLC, is protected under international copyright laws. This material, including but not limited to text, images, paintings, and instructional content, is solely provided for the personal use of students for learning purposes.

No part of this material may be reproduced, distributed, displayed, transmitted, or otherwise used without the prior written permission of Cinnamon Cooney of The Art Sherpa LLC. This prohibition extends to both commercial and non-commercial uses. Any unauthorized use may infringe upon the intellectual property rights of The Art Sherpa LLC and could be subject to legal penalties.

By accessing, reading, or otherwise using this material, you, the student, agree to respect the intellectual property rights of The Art Sherpa LLC, and understand that this material is for your personal use and learning only.

It is your responsibility to understand and comply with all applicable local, state, national, and international laws when using this copyrighted material. All rights related to distribution, including the text and imagery within this work, are retained by Cinnamon Cooney, The Art Sherpa LLC.

For permission requests or inquiries, please contact The Art Sherpa LLC at support@theartsherpa.com.

Use policy

Student Use Policy of The Art Sherpa LLC

Personal Use: Students are allowed to print out the material provided by The Art Sherpa LLC for personal, at-home use. This includes studying and practicing techniques as presented in the material.

Private Parties: Students are permitted to make copies of the material for private parties, provided no money is exchanged in relation to the provision or use of the material. The use of the material is only for the purpose of facilitating the personal enjoyment and learning of painting within the confines of the private party.

Charitable Organizations: Libraries, educational institutions, and other non-profit organizations that exist to serve the community may request permission to print copies of the material for use in their efforts to help others. Such permission must be obtained directly from The Art Sherpa LLC at support@theartsherpa.com.

Painting Parties for Profit: If a student, individual, or business wishes to use the material for painting parties or events where profit is involved, a license must be purchased from The Art Sherpa LLC. This license allows the distribution of the material for the single business or single party only. It does not permit publication of the material in any other way, form, or through any other medium.

Any use of the material not expressly permitted in this Student Use Policy may infringe upon the intellectual property rights of The Art Sherpa LLC and could be subject to legal penalties



FOLLOW THE ART SHERPA



WEBSITE:

<https://theartsherpa.com/>

FACEBOOK:

<https://www.facebook.com/TheArtSherpa/>

INSTAGRAM:

<https://www.instagram.com/theartsherpa>

PINTEREST:

<https://www.pinterest.com/cinnamoncooney/>



#THEARTSHERPA
#STEPBYSTEPPAINTING
#ACRYLICPAINTING

ABOUT THE ART SHERPA:

Artwork and video is the sole property of The Art Sherpa™ and intended for the students personal education and Enjoyment. For questions regarding using any Art Sherpa painting in a commercial setting labs@theartsherpa.com for all other questions support@theartsherpa.com Read our full disclosure here that covers partnerships and affiliate links <http://bit.ly/affiliatedisclosureTAS>

TABLE OF CONTENTS

PAINT AND TOOL GUIDE	5
Step 1 - Colored Ground	6
Step 2 - Line And Sketch	7
Step 3 - Blocking In Light Source	8
Step 4 - Zones Of Color	9
Step 5 - Technique Demo	10
Step 6 - First Leaf Layer	11
Step 7 - Dappled Path	12
Step 8 - Technique Demo 2	13
Step 9 - Stippling	14
Step 10 - Further Stippling	15
Step 11 - Path Details	16
Step 12 - Further Path Details	17
Step 13 - Background Branches	18
Step 14 - Foliage Backdrop	19
Step 15 - Trees	20
Step 16 - More Leaves And Bark	21
Step 17 - Red And Orange Leaves	22
Step 18 - Twigs And Detail	23
Traceable	24

PAINT AND TOOL GUIDE

Use this paint legend below to understand the symbols that I use to give you important painting information.

PAINT

- Cadmium Red Medium = **CRM**
- Cadmium Yellow Medium = **CYM**
- Ultramarine Blue = **UB**
- Burnt Sienna = **BS**
- Golden's Acrylic Satin Glazing Liquid = **ASL**
- Dioxazine Purple = **DP**
- Mars Black = **MB**
- Titanium White = **TW**
- Zinc White = **ZW**
- Yellow Ochre = **YO**

BRUSHES

- Large Synthetic Bright
- Medium Synthetic Bright
- Large Hog Round
- Medium Synthetic Round Blender
- Medium Hog "D"
- Medium Synthetic Stippler
- Medium Synthetic Oval Mop
- Small Hog Round
- Small Synthetic Round
- Large Hog "D"
- Small Hog "D"
- X-Small Synthetic Round Liner

TOOLS

- 11x14 Canvas (If you notice that your canvas started to warp, as sometimes happens, just turn the canvas over and put it back side forward on your easel, then mist the back of the canvas. It usually resolves itself. Let it dry before you proceed.)
- Optional: Sta-Wet Palette
- Chalk Pencil or Watercolor Pencil
- T-Square Ruler
- Mixed Media Pad

Techniques You Will Use In This Painting

- Color Theory
- Implying Foliage
- Expressive Painting Strokes
- Being Painterly and Loose
- Atmospheric Perspective
- Finding Value
- Dry Brushing
- Blending Wet into Wet
- Setting a Horizon line
- Color Mixing

Step 1 - Colored Ground

Timestamp 4:50

“Love Burnt Sienna”

PAINT

- Burnt Sienna

BRUSHES & TOOLS

- Large Synthetic Bright

STEP DISCUSSION

In this step, paint the entire canvas with Burnt Sienna. Smooth the paint somewhat by applying long strokes, vertically and horizontally. Rinse the brush.

Ensure the surface is thoroughly dry before continuing to the next step.



Step 2 - Line And Sketch

Timestamp 10:08
“Grid Quadrants”

PAINT

- Yellow Ochre

BRUSHES & TOOLS

- Chalk Pencil or Watercolor Pencil
- T-Square Ruler
- Medium Synthetic Bright

STEP DISCUSSION

First divide the canvas into quadrants. Then, I freehanded the image using paint, but you can use whatever method makes you the most comfortable. You can use a chalk pencil to grid, transfer, trace or freehand the image. Draw only the main objects with chalk.



Step 3 - Blocking In Light Source

Timestamp 15:05
“Bright Clear Sky”

PAINT

- Yellow Ochre
- Cadmium Yellow Medium
- Ultramarine Blue
- Titanium White

BRUSHES & TOOLS

- Medium Synthetic Bright

STEP DISCUSSION

Block in the sky first, followed by the distant forest using light colors that create the corridor of light. Rinse the brush.

Ensure the surface is thoroughly dry before continuing to the next step.



Step 4 - Zones Of Color

Timestamp 18:36

“Beginning Work That Improves Result“

PAINT

- Yellow Ochre
- Cadmium Yellow Medium
- Burnt Sienna
- Mars Black
- Satin Glazing Liquid

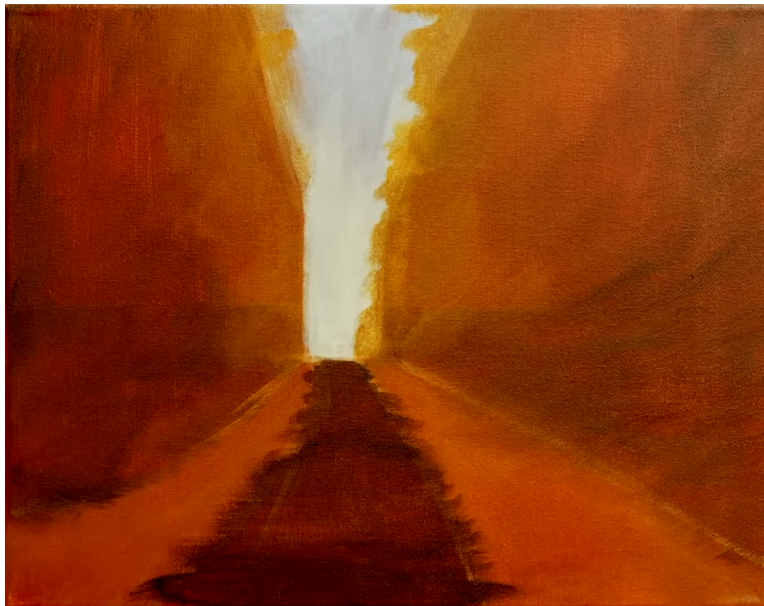
BRUSHES & TOOLS

- Large Hog Round

STEP DISCUSSION

Lay down the darker colors of each zone. Build them up, keeping the lighter colors closer to the corridor of light. The darker colors should be blended out towards the sides and on the forest floor. Block the path in a dark color, for contrast. Rinse the brush.

Ensure the surface is thoroughly dry before continuing to the next step.



Step 5 - Technique Demo

Timestamp 27:50

“Mini Step”

PAINT

- Burnt Sienna
- Mars Black

BRUSHES & TOOLS

- Medium Synthetic Bright
- Medium Synthetic Round Blender
- Medium Hog "D"
- Medium Synthetic Stippler
- Medium Synthetic Oval Mop
- Medium Synthetic Oval Mop
- Mixed Media Pad

STEP DISCUSSION

I demonstrated how to create foliage using a variety of brushes to show the difference between each.



Step 6 - First Leaf Layer

Timestamp 37:10
“Back To Front”

PAINT

- Yellow Ochre
- Cadmium Yellow Medium
- Ultramarine Blue
- Dioxazine Purple
- Titanium White

BRUSHES & TOOLS

- Medium Hog "D"

STEP DISCUSSION

To create depth and perspective, paint the furthest layer first. Then, paint each subsequent layer to transition forward. In this step begin with the lighter colors layering over the corridor of light, allowing some of the light blue sky colors to show through. Then, highlight the nearby trees with medium yellow hues. Rinse the brush.

Ensure the surface is thoroughly dry before continuing to the next step.



Step 7 - Dappled Path

Timestamp 45:54
“Jagged Strokes”

PAINT

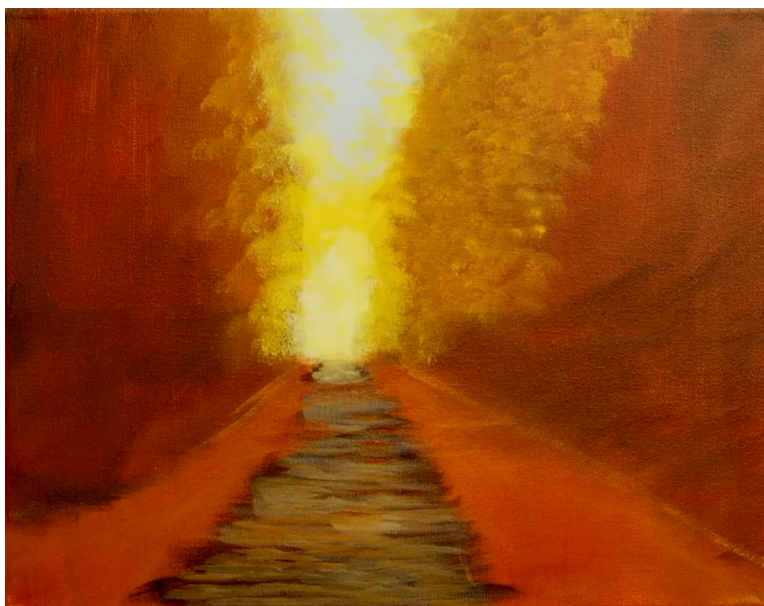
- Cadmium Red Medium
- Cadmium Yellow Medium
- Burnt Sienna
- Mars Black
- Titanium White
- Yellow Ochre

BRUSHES & TOOLS

- Medium Synthetic Bright
- Mixed Media Pad

STEP DISCUSSION

In this step we will be working the path area. Use the edge of the brush and the dry brush technique to create irregular jagged strokes that vary in weight and hue. Rinse the brush.



Step 8 - Technique Demo 2

Timestamp 50:06

“Hatching”

PAINT

- Cadmium Yellow Medium
- Burnt Sienna
- Dioxazine Purple
- Mars Black
- Yellow Ochre
- Zinc White

BRUSHES & TOOLS

- Medium Synthetic Round Blender
- Medium Hog "D"
- Mixed Media Pad

STEP DISCUSSION

I demonstrated how to stipple yellow, from the darkest values to lightest. I also showed how to grey the yellows and distribute the brown throughout.



Step 9 - Stippling

Timestamp 55:16

“Generalization And Value”

PAINT

- Cadmium Yellow Medium
- Burnt Sienna
- Mars Black
- Yellow Ochre
- Satin Glazing Liquid

BRUSHES & TOOLS

- Medium Synthetic Round Blender

STEP DISCUSSION

Stipple in a generalization of the leaves along the sides of the path using various shades of yellow. Apply the darker values to deepen areas that are in shadow and the lighter values in areas that are more sunlit. Use Glazing liquid as needed.



Step 10 - Further Stippling

Timestamp 1:04:10

“One Tap At A Time”

PAINT

- Cadmium Red Medium
- Cadmium Yellow Medium
- Ultramarine Blue
- Burnt Sienna
- Mars Black
- Yellow Ochre

BRUSHES & TOOLS

- Medium Synthetic Round Blender

STEP DISCUSSION

Along the outer edges of the leaves you just painted, start stippling leaves that have varying shades of a green gold cast. Continue moving outward onto the forest floor with dark red and orange values.



Step 11 - Path Details

Timestamp 1:09:31

“Glazing The Path Smooth”

PAINT

- Cadmium Red Medium
- Burnt Sienna
- Mars Black
- Titanium White
- Yellow Ochre
- Zinc White
- Satin Glazing Liquid

BRUSHES & TOOLS

- Medium Synthetic Round Blender
- Small Synthetic Round

STEP DISCUSSION

Blend the lighter color over the path to smooth it, using glazing Liquid. Then, use reddish brown colors to add individual shadows dotted along the left side of the path and dappled across the top in a few places.

Ensure the surface is thoroughly dry before continuing to the next step.



Step 12 - Further Path Details

Timestamp 1:13:54

“Randomize”

PAINT

- Cadmium Red Medium
- Cadmium Yellow Medium
- Ultramarine Blue
- Burnt Sienna
- Mars Black
- Titanium White
- Zinc White
- Yellow Ochre
- Satin Glazing Liquid

BRUSHES & TOOLS

- Medium Synthetic Round Blender
- Small Synthetic Round
- Mixed Media Pad

STEP DISCUSSION

Lighten the path overall using light browns, Glazing Liquid and horizontal strokes. Then, paint reddish brown shadows on the left side of the path and dab yellow and orange leaves over them. I also dab yellow and greenish gold leaves on both sides of the path. Rinse the brush.

Ensure the surface is thoroughly dry before continuing to the next step.



Step 13 - Background Branches

Timestamp 1:35:27

“In The Center Work“

PAINT

- Cadmium Red Medium
- Cadmium Yellow Medium
- Burnt Sienna
- Mars Black
- Yellow Ochre
- Zinc White
- Satin Glazing Liquid

BRUSHES & TOOLS

- Medium Synthetic Round Blender
- Small Synthetic Round

STEP DISCUSSION

Paint dark tree trunks and branches in the far distance, through the light corridor. Then I stipple dark orange and yellow leaves over them and onto the nearby trees. Then use a dark brownish color for the shadows on the ground and in the forest. Rinse the brush.

Ensure the surface is thoroughly dry before continuing to the next step.



Step 14 - Foliage Backdrop

Timestamp 1:48:02

“Back Where The Forest Lives“

PAINT

- Cadmium Red Medium
- Cadmium Yellow Medium
- Burnt Sienna
- Mars Black

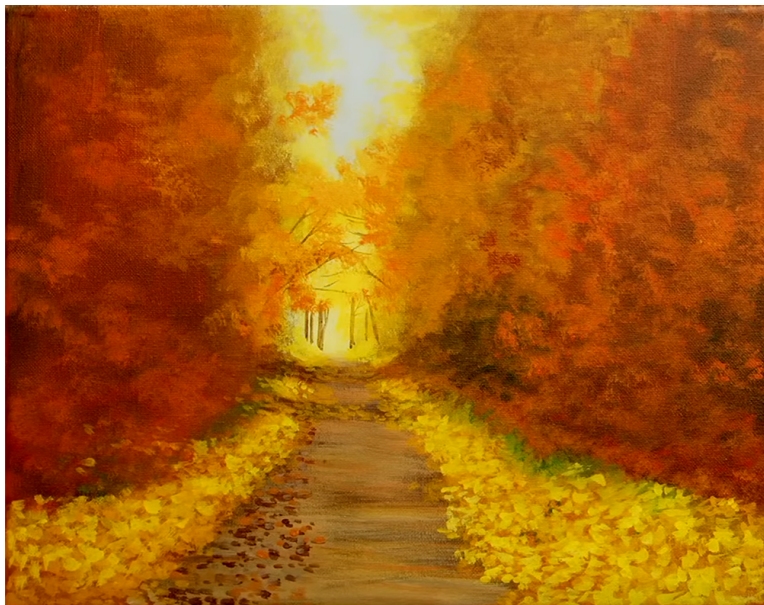
BRUSHES & TOOLS

- Large Hog "D"

STEP DISCUSSION

Stipple in the background foliage on either side of the canvas. Use medium to dark orange values to create depth. Rinse the brush.

Ensure the surface is thoroughly dry before continuing to the next step.



Step 15 - Trees

Timestamp 2:03:45

“See The Forest With The Trees”

PAINT

- Mars Black
- Satin Glazing Liquid

BRUSHES & TOOLS

- Small Synthetic Round

STEP DISCUSSION

Thin some black with water and paint the more forward tree trunks on either side of the path. Then, add some of the smaller limbs that branch off. Rinse the brush.

Ensure the surface is thoroughly dry before continuing to the next step.



Step 16 - More Leaves And Bark

Timestamp 2:25:09

“Muted In The Back”

PAINT

- Cadmium Yellow Medium
- Cad Red Medium
- Burnt Sienna
- Dioxazine Purple
- Mars Black
- Titanium White
- Zinc White
- Yellow Ochre
- Satin Glazing Liquid

BRUSHES & TOOLS

- Medium Hog "D"
- Small Hog "D"
- Mixed Media Pad

STEP DISCUSSION

Stipple more darker yellow leaves to the midground foliage on the right, covering some branches and leaves. Use three values to shape the leaves: light for highlights, medium for mid-tones, and dark for shadows. Then, use some medium to light brown values to apply texture onto the tree trunks.



Step 17 - Red And Orange Leaves

Timestamp 2:42:47

“Stipple, Stipple”

PAINT

- Cadmium Red Medium
- Cadmium Yellow Medium
- Ultramarine Blue
- Burnt Sienna
- Dioxazine Purple
- Mars Black
- Titanium White
- Yellow Ochre

BRUSHES & TOOLS

- Medium Hog "D"
- Small Synthetic Round
- Small Hog "D"

STEP DISCUSSION

In this step you will stipple yellow leaves on the left trees and shape the front foliage with yellow, orange, and red values. I also paint bushes around the tree bases. I add dark shadows to the ground near the trees



Step 18 - Twigs And Detail

Timestamp 3:05:18
“Some Dead Leaves”

PAINT

- Cadmium Red Medium
- Cadmium Yellow Medium
- Ultramarine Blue
- Burnt Sienna
- Dioxazine Purple
- Mars Black
- Titanium White
- Yellow Ochre
- Zinc White
- Satin Glazing Liquid

BRUSHES & TOOLS

- Medium Synthetic Round Blender
- Small Synthetic Round
- Mixed Media Pad

STEP DISCUSSION

Finish the painting by adjusting the lights and shadows. Paint more dark branches and trunks peeking through the leaves. Also add some dark shapes and bright yellows to the front leaves in the forest and on the path. Add a final glaze where needed. Rinse the brush.

Sign.



Traceable

