

The Art Sherpa Presents

## *Yellow Blue Bird In The Rain*

*Sheltering From The Storm*

Name credit to Patron: Jennifer Bowman



15 Steps

Difficulty: Challenging - 3 Hoot 🦉🦉🦉

Copyright © The Art Sherpa LLC, 2023. All Rights Reserved.

The content of this chapter, created and published by Cinnamon Cooney of The Art Sherpa LLC, is protected under international copyright laws. This material, including but not limited to text, images, paintings, and instructional content, is solely provided for the personal use of students for learning purposes.

No part of this material may be reproduced, distributed, displayed, transmitted, or otherwise used without the prior written permission of Cinnamon Cooney of The Art Sherpa LLC. This prohibition extends to both commercial and non-commercial uses. Any unauthorized use may infringe upon the intellectual property rights of The Art Sherpa LLC and could be subject to legal penalties.

By accessing, reading, or otherwise using this material, you, the student, agree to respect the intellectual property rights of The Art Sherpa LLC, and understand that this material is for your personal use and learning only.

It is your responsibility to understand and comply with all applicable local, state, national, and international laws when using this copyrighted material. All rights related to distribution, including the text and imagery within this work, are retained by Cinnamon Cooney, The Art Sherpa LLC.

For permission requests or inquiries, please contact The Art Sherpa LLC at [support@theartsherpa.com](mailto:support@theartsherpa.com).

## Use policy

### Student Use Policy of The Art Sherpa LLC

**Personal Use:** Students are allowed to print out the material provided by The Art Sherpa LLC for personal, at-home use. This includes studying and practicing techniques as presented in the material.

**Private Parties:** Students are permitted to make copies of the material for private parties, provided no money is exchanged in relation to the provision or use of the material. The use of the material is only for the purpose of facilitating the personal enjoyment and learning of painting within the confines of the private party.

**Charitable Organizations:** Libraries, educational institutions, and other non-profit organizations that exist to serve the community may request permission to print copies of the material for use in their efforts to help others. Such permission must be obtained directly from The Art Sherpa LLC at [support@theartsherpa.com](mailto:support@theartsherpa.com).

**Painting Parties for Profit:** If a student, individual, or business wishes to use the material for painting parties or events where profit is involved, a license must be purchased from The Art Sherpa LLC. This license allows the distribution of the material for the single business or single party only. It does not permit publication of the material in any other way, form, or through any other medium.

Any use of the material not expressly permitted in this Student Use Policy may infringe upon the intellectual property rights of The Art Sherpa LLC and could be subject to legal penalties



# FOLLOW THE ART SHERPA



WEBSITE:

<https://theartsherpa.com/>

FACEBOOK:

<https://www.facebook.com/TheArtSherpa/>

INSTAGRAM:

<https://www.instagram.com/theartsherpa>

PINTEREST:

<https://www.pinterest.com/cinnamoncooney/>



#THEARTSHERPA  
#STEPBYSTEPPAINTING  
#ACRYLICPAINTING

**ABOUT THE ART SHERPA:**

Artwork and video is the sole property of The Art Sherpa™ and intended for the students personal education and Enjoyment. For questions regarding using any Art Sherpa painting in a commercial setting [labs@theartsherpa.com](mailto:labs@theartsherpa.com) for all other questions [support@theartsherpa.com](mailto:support@theartsherpa.com) Read our full disclosure here that covers partnerships and affiliate links <http://bit.ly/affiliatedisclosureTAS>

# TABLE OF CONTENTS

<b>PAINT AND TOOL GUIDE</b>	<b>5</b>
<b>Step 1 - Colored Ground</b>	<b>6</b>
<b>Step 2 - Scumbled Background</b>	<b>7</b>
<b>Step 3 - Grained Glaze</b>	<b>8</b>
<b>Step 4 - Sketch</b>	<b>9</b>
<b>Step 5 - Branch Work</b>	<b>10</b>
<b>Step 6 - Branch Details</b>	<b>11</b>
<b>Step 7 - Soft Blending</b>	<b>12</b>
<b>Step 8 - Beginning Bird Features</b>	<b>13</b>
<b>Step 9 - Leaf Texture And Contour</b>	<b>14</b>
<b>Step 10 - Back To Bird</b>	<b>15</b>
<b>Step 11 - Bird Feathers</b>	<b>16</b>
<b>Step 12 - Further Bird Details</b>	<b>17</b>
<b>Step 13 - Feather Blending</b>	<b>18</b>
<b>Step 14 - Further Feather Blending</b>	<b>19</b>
<b>Step 15 - Drops And Splatter</b>	<b>20</b>
<b>Traceable</b>	<b>21</b>



# PAINT AND TOOL GUIDE

Use this paint legend below to understand the symbols that I use to give you important painting information.

## PAINT

- Cadmium Red Medium = **CRM**
- Quinacridone Magenta = **QM**
- Cadmium Yellow Medium = **CYM**
- Phthalo Blue = **PB**
- Ultramarine Blue = **UB**
- Phthalo Green = **PG**
- Burnt Sienna = **BS**
- Mars Black = **MB**
- Zinc White = **ZW**
- Titanium White = **TW**
- Fluid White Paint = **FWP**
- Golden's Acrylic Gloss Glazing Liquid = **AGL**

## BRUSHES

- X-Large Synthetic Flat
- Large Synthetic Oval Mop
- Medium Synthetic Grainer
- Medium Synthetic Round
- Medium Synthetic "D"
- Large Synthetic Round Blender
- X-Small Synthetic Round Liner
- Large Synthetic Stippler
- Large Synthetic Round
- Large Hog Round

## TOOLS

- 12x12 Canvas (If you notice that your canvas started to warp, as sometimes happens, just turn the canvas over and put it back side forward on your easel, then mist the back of the canvas. It usually resolves itself. Let it dry before you proceed.)
- Optional: Sta-Wet Palette
- Chalk Pencil or Watercolor Pencil

## Techniques You Will Use In This Painting

- Color Theory
- Implying Foliage
- Expressive Painting Strokes
- Being Painterly and Loose
- Atmospheric Perspective
- Finding Value
- Dry Brushing
- Directionality
- Blending Wet into Wet
- Color Mixing

# Step 1 - Colored Ground

Timestamp 3:50  
“Basic Brown”

## PAINT

- Burnt Sienna

## BRUSHES & TOOLS

- X-Large Synthetic Flat

## STEP DISCUSSION

Paint the entire canvas with Burnt Sienna. Smooth the surface somewhat by applying long strokes, vertically and horizontally. Rinse the brush.

Dry the surface before continuing to the next step.



## Step 2 - Scumbled Background

Timestamp 7:08

“Oil Effects“

### PAINT

- Cadmium Red Medium
- Cadmium Yellow Medium
- Ultramarine Blue
- Phthalo Green
- Burnt Sienna
- Titanium White
- Golden's Acrylic Gloss Glazing Liquid

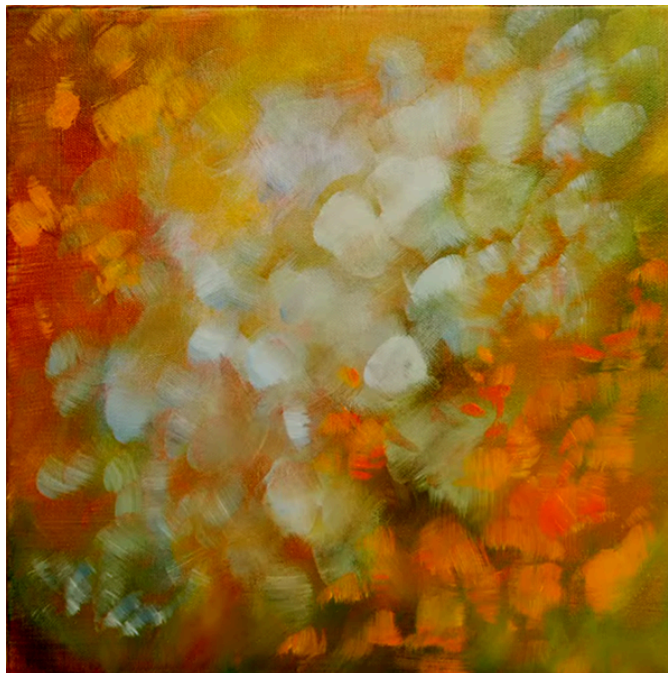
### BRUSHES & TOOLS

- Large Synthetic Oval Mop

### STEP DISCUSSION

Create a diffused autumn background by dancing through the greens, greys and browns. Blending them with the Gloss Glazing Liquid. Rinse the brush, and add a few pops of orange layered into the corners. Rinse the brush.

Ensure that the surface is dry before continuing to the next step.



## Step 3 - Grained Glaze

Timestamp 23:25

“Rainy Grainy”

### PAINT

- Cadmium Yellow Medium
- Ultramarine Blue
- Phthalo Green
- Burnt Sienna
- Titanium White
- Golden's Acrylic Gloss Glazing Liquid
- Fluid White Paint

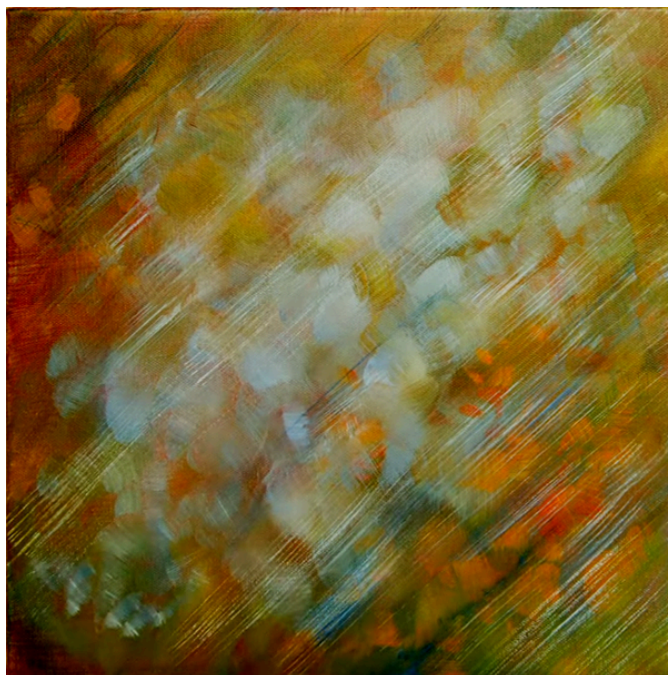
### BRUSHES & TOOLS

- Medium Synthetic Grainer
- Large Synthetic Oval Mop

### STEP DISCUSSION

Create a rainy feel to the background by mixing glaze to paint, and brushing it over the surface on an angle, going from the top right to bottom left. Rinse the brush.

Ensure that the surface is dry before continuing to the next step.



## Step 4 - Sketch

Timestamp 35:20

“Leaf & Bird”

### PAINT

- Cadmium Red Medium
- Cadmium Yellow Medium
- Ultramarine Blue
- Burnt Sienna
- Mars Black
- Titanium White

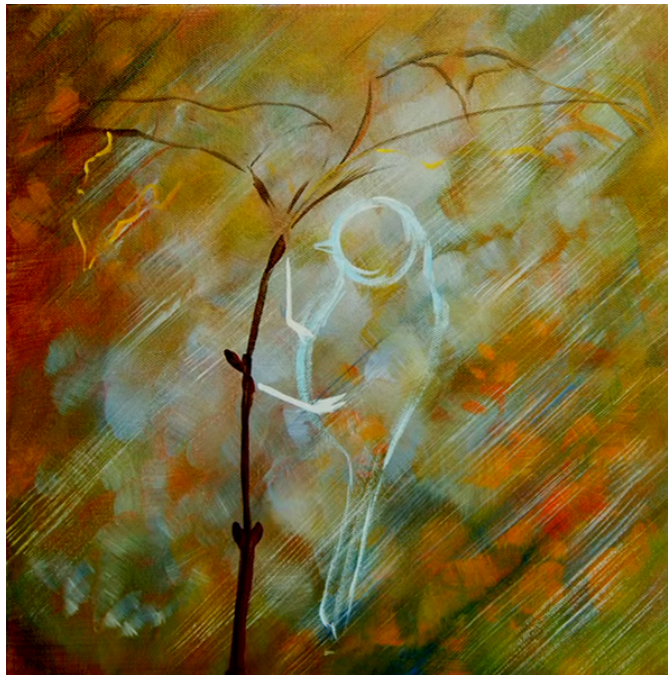
### BRUSHES & TOOLS

- Medium Synthetic Round
- Chalk Pencil

### STEP DISCUSSION

I freehanded the image using paint, but you can use whatever method makes you the most comfortable. You can use a chalk pencil to grid, transfer, trace or freehand the image. Draw only the main objects with chalk. Rinse the brush.

Ensure that the surface is dry before continuing to the next step.





## Step 5 - Branch Work

Timestamp 46:13

“Let It Grow”

### PAINT

- Cadmium Red Medium
- Quinacridone Magenta
- Cadmium Yellow Medium
- Ultramarine Blue
- Phthalo Green
- Burnt Sienna
- Titanium White

### BRUSHES & TOOLS

- Medium Synthetic “D”
- Medium Synthetic Round

### STEP DISCUSSION

Add a bit of color to the stem. Then using the reference as a guide, loosely weave in fall colors to give the leaf structure.

Ensure that the surface is dry before continuing to the next step.



## Step 6 - Branch Details

Timestamp 53:20

“Vain Veins“

### PAINT

- Cadmium Red Medium
- Quinacridone Magenta
- Cadmium Yellow Medium
- Ultramarine Blue
- Phthalo Green
- Burnt Sienna
- Mars Black

### BRUSHES & TOOLS

- Medium Synthetic Round

### STEP DISCUSSION

Create texture to the leaves by adding veins, using the toe of the brush. Rinse the brush.





## Step 7 - Soft Blending

Timestamp 1:00:05

“Nice & Light“

### PAINT

- Ultramarine Blue
- Burnt Sienna
- Titanium White
- Zinc White
- Golden's Acrylic Gloss Glazing Liquid

### BRUSHES & TOOLS

- Large Synthetic Round Blender

### STEP DISCUSSION

In this step you will adjust and lighten the background to create a halo around the bird. Rinse the brush.



## Step 8 - Beginning Bird Features

Timestamp 1:06:19

“Something To Tweet About”

### PAINT

- Mars Black

### BRUSHES & TOOLS

- X-Small Synthetic Round Liner

### STEP DISCUSSION

Carefully paint the feet, legs and beak using thinned black paint. Rinse the brush.



## Step 9 - Leaf Texture And Contour

Timestamp 1:10:08

“Leaf The Bird Alone“

### PAINT

- Cadmium Red Medium
- Quinacridone Magenta
- Cadmium Yellow Medium
- Ultramarine Blue
- Phthalo Green
- Burnt Sienna
- Zinc White
- Golden's Acrylic Gloss Glazing Liquid
- Fluid White Paint

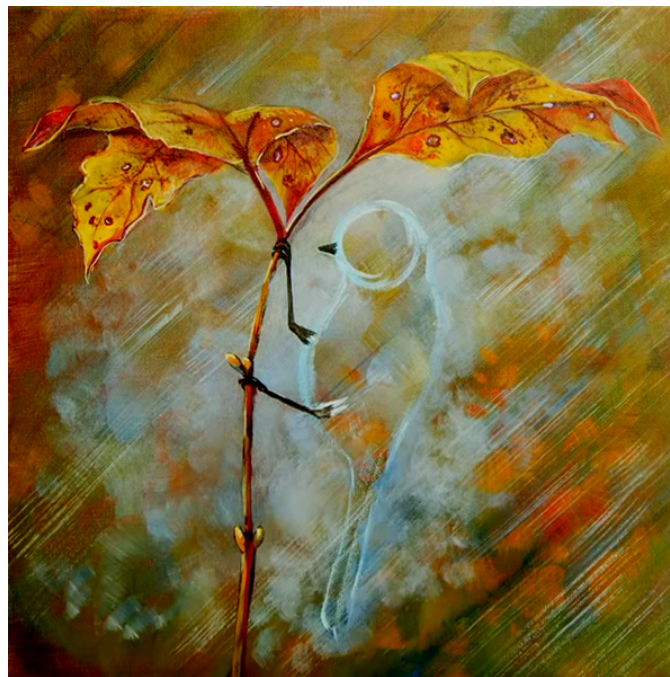
### BRUSHES & TOOLS

- Medium Synthetic Round
- Medium Synthetic “D”
- X-Small Synthetic Round Liner
- Large Synthetic Stippler

### STEP DISCUSSION

Apply more dimension to the leaves. Brightening then stippling some texture onto them. Then create the holes on the surface of the leaves. Outline and highlight the leaf edges, stem, and buds. Then shadow with glaze.

Ensure that the surface is dry before continuing to the next step.



## Step 10 - Back To Bird

Timestamp 1:28:50

“A Case Of The Blues”

### PAINT

- Quinacridone Magenta
- Cadmium Yellow Medium
- Phthalo Blue
- Ultramarine Blue
- Burnt Sienna
- Mars Black
- Titanium White
- Golden's Acrylic Gloss Glazing Liquid

### BRUSHES & TOOLS

- Medium Synthetic Round

### STEP DISCUSSION

First paint the belly with a light color. Adjust the outline of the bird as desired. Block in the colors on the rest of the bird. Rinse the brush.

Ensure that the surface is dry before continuing to the next step.





# Step 11 - Bird Feathers

Timestamp 1:38:24

“Bird(s) Of A Feather“

## PAINT

- Quinacridone Magenta
- Cadmium Yellow Medium
- Ultramarine Blue
- Phthalo Green
- Burnt Sienna
- Mars Black
- Titanium White
- Golden's Acrylic Gloss Glazing Liquid

## BRUSHES & TOOLS

- Large Synthetic Round Blender
- Medium Synthetic “D”

## STEP DISCUSSION

Create shape and form to the belly of the bird using various shades of yellow to highlight, and darker brownish purple shadows. Then add shadows to the light area of the face and adjust the background as needed. Rinse the brush.



## Step 12 - Further Bird Details

Timestamp 1:48:35

“Beakier“

### PAINT

- Ultramarine Blue
- Burnt Sienna
- Mars Black
- Titanium White
- Golden's Acrylic Gloss Glazing Liquid
- Fluid White Paint

### BRUSHES & TOOLS

- X-Small Synthetic Round Liner

### STEP DISCUSSION

In this step you will define the eyes, beak and legs using three shades going from light to dark. Rinse the brush.



## Step 13 - Feather Blending

Timestamp 1:53:59  
“Highs And Lows”

### PAINT

- Cadmium Red Medium
- Quinacridone Magenta
- Cadmium Yellow Medium
- Phthalo Blue
- Ultramarine Blue
- Phthalo Green
- Burnt Sienna
- Mars Black
- Titanium White
- Zinc White
- Fluid White Paint

### BRUSHES & TOOLS

- Medium Synthetic “D”

### STEP DISCUSSION

Highlight the edges of the belly. Then, continue adding value and shape to the rest of the bird, using various shades of yellow, blues and greys. Rinse the brush.

Ensure that the surface is dry before continuing to the next step.





## Step 14 - Further Feather Blending

Timestamp 2:10:42

“Remember To Tickle The Belly”

### PAINT

- Cadmium Red Medium
- Quinacridone Magenta
- Cadmium Yellow Medium
- Ultramarine Blue
- Burnt Sienna
- Titanium White
- Golden's Acrylic Gloss Glazing Liquid

### BRUSHES & TOOLS

- Medium Synthetic “D”
- Large Synthetic Round Blender

### STEP DISCUSSION

First brighten the yellow of the bird by painting yellow over some of the white shoulder feathers. Next adjust the shadows with the purple hues. Finally glaze some blues into the background.



## Step 15 - Drops And Splatter

Timestamp 2:17:30

“Risk And Reward“

### PAINT

- Fluid White Paint
- Titanium White
- Golden's Acrylic Gloss Glazing Liquid

### BRUSHES & TOOLS

- X-Small Synthetic Round
- Large Synthetic Round Blender
- Large Hog Round

### STEP DISCUSSION

Create the drops of rain that are bouncing off the top of the leaves with thinned paint and using the two brush whack method. Use a clean damp brush to remove any unwanted drops of paint. Then, paint some of the more detailed drops. Make any final adjustments you like.

Sign.



Traceable

