

The Art Sherpa Presents  
*Acrylic August-Day 10*  
*Koi Fish*

*Don't Be Koi*

Name credit to Patron: Diane Gaines



9 Steps

Difficulty: Intermediate - 2 Hoot 🦉🦉

Copyright © The Art Sherpa LLC, 2024. All Rights Reserved.

The content of this chapter, created and published by Cinnamon Cooney of The Art Sherpa LLC, is protected under international copyright laws. This material, including but not limited to text, images, paintings, and instructional content, is solely provided for the personal use of students for learning purposes.

No part of this material may be reproduced, distributed, displayed, transmitted, or otherwise used without the prior written permission of Cinnamon Cooney of The Art Sherpa LLC. This prohibition extends to both commercial and non-commercial uses. Any unauthorized use may infringe upon the intellectual property rights of The Art Sherpa LLC and could be subject to legal penalties.

By accessing, reading, or otherwise using this material, you, the student, agree to respect the intellectual property rights of The Art Sherpa LLC, and understand that this material is for your personal use and learning only.

It is your responsibility to understand and comply with all applicable local, state, national, and international laws when using this copyrighted material. All rights related to distribution, including the text and imagery within this work, are retained by Cinnamon Cooney, The Art Sherpa LLC.

For permission requests or inquiries, please contact The Art Sherpa LLC at [support@theartsherpa.com](mailto:support@theartsherpa.com).

## Use policy

### Student Use Policy of The Art Sherpa LLC

**Personal Use:** Students are allowed to print out the material provided by The Art Sherpa LLC for personal, at-home use. This includes studying and practicing techniques as presented in the material.

**Private Parties:** Students are permitted to make copies of the material for private parties, provided no money is exchanged in relation to the provision or use of the material. The use of the material is only for the purpose of facilitating the personal enjoyment and learning of painting within the confines of the private party.

**Charitable Organizations:** Libraries, educational institutions, and other non-profit organizations that exist to serve the community may request permission to print copies of the material for use in their efforts to help others. Such permission must be obtained directly from The Art Sherpa LLC at [support@theartsherpa.com](mailto:support@theartsherpa.com).

**Painting Parties for Profit:** If a student, individual, or business wishes to use the material for painting parties or events where profit is involved, a license must be purchased from The Art Sherpa LLC. This license allows the distribution of the material for the single business or single party only. It does not permit publication of the material in any other way, form, or through any other medium.

Any use of the material not expressly permitted in this Student Use Policy may infringe upon the intellectual property rights of The Art Sherpa LLC and could be subject to legal penalties

# FOLLOW THE ART SHERPA

WEBSITE: <https://theartsherpa.com/>

FACEBOOK: <https://www.facebook.com/TheArtSherpa/>

INSTAGRAM: <https://www.instagram.com/theartsherpa>

PINTEREST: <https://www.pinterest.com/cinnamoncooney/>



#THEARTSHERPA  
#STEPBYSTEPPAINTING  
#ACRYLICPAINTING

#### ABOUT THE ART SHERPA:

Artwork and video is the sole property of The Art Sherpa™ and intended for the students personal education and Enjoyment. For questions regarding using any Art Sherpa painting in a commercial setting [labs@theartsherpa.com](mailto:labs@theartsherpa.com) for all other questions [support@theartsherpa.com](mailto:support@theartsherpa.com) Read our full disclosure here that covers partnerships and affiliate links <http://bit.ly/affiliatedisclosureTAS>

# TABLE OF CONTENTS

<b>PAINT AND TOOL GUIDE</b>	<b>5</b>
Video Chapter Guide	6
<b>Step 1 - Colored Ground</b>	<b>7</b>
STEP 1 PHOTO	8
<b>Step 2 - Sketching In</b>	<b>9</b>
STEP 2 PHOTO	10
<b>Step 3 - Energetic Water</b>	<b>11</b>
STEP 3 PHOTO	12
<b>Step 4 - Fish Underpainting</b>	<b>13</b>
STEP 4 PHOTO	14
<b>Step 5 - Orange Fish</b>	<b>15</b>
STEP 5 PHOTO	16
<b>Step 6 - Red Fish</b>	<b>17</b>
STEP 6 PHOTO	18
<b>Step 7 - Scale Texture</b>	<b>19</b>
STEP 7 PHOTO	20
<b>Step 8 - More Tapping Scales</b>	<b>21</b>
STEP 8 PHOTO	22
<b>Step 9 - Fins And Tails</b>	<b>23</b>
STEP 9 PHOTO	24
Traceable	25



# PAINT AND TOOL GUIDE

Use this paint legend below to understand the symbols that I use to give you important painting information.

## PAINT

- Cadmium Red Medium = **CRM**
- Quinacridone Magenta = **QM**
- Cadmium Yellow Medium = **CYM**
- Phthalo Blue = **PB**
- Ultramarine Blue = **UB**
- Mars Black = **MB**
- Titanium White = **TW**
- Yellow Ochre = **YO**
- Fluid White Paint = **FWP**



## BRUSHES & TOOLS

- Large Synthetic Angle
- Small Hog Round
- Medium Synthetic Angle
- Small Filbert Grainer
- Small Synthetic Round

## TOOLS

- Chalk Pencil or Watercolor Pencil
- 8x8 Canvas (If you notice that your canvas started to warp, as sometimes happens, just turn the canvas over and put it back side forward on your easel, then mist the back of the canvas. It usually resolves itself. Let it dry before you proceed.)
- Optional: Sta-Wet Palette

## SYMBOL GUIDE

- > Less than previous amount
- < More than previous amount
- + Equal amount

## Techniques You Will Use In This Painting

- Color Theory
- Expressive Painting Strokes
- Being Painterly and Loose
- Finding Value
- Dry Brushing
- Directionality
- Blending Wet into Wet
- Color Mixing
- Implying Motion

## Video Chapter Guide

Below are the timestamps we inserted in the tutorial video so that you can easily coordinate using the book and the tutorial video simultaneously.

Intro	00:00	
Step 1	02:19	Colored Ground
Step 2	04:43	Sketching In
Step 3	07:45	Energetic Water
Step 4	18:18	Fish Underpainting
Step 5	25:28	Orange Fish
Step 6	31:00	Red Fish
Step 7	36:44	Scale Texture
Step 8	42:39	More Tipping Scales
Step 9	48:57	Fins And Tails
	54:31	Sign

# Step 1 - Colored Ground

Timestamp 2:19

“A Blue Cast”

## PAINT

- Ultramarine Blue = **UB**
- Mars Black = **MB**

## BRUSHES & TOOLS

- Large Synthetic Angle

## COLOR MIXES

- Paynes Grey = **UB + MB**

## STEP DISCUSSION

Load the brush with **Paynes Grey mix**, and roughly cover the entire canvas. Smooth the paint with long vertical and horizontal strokes to ensure complete coverage Rinse the brush.

Dry the surface before continuing to the next step.

## STEP 1 PHOTO



If you did not understand any part of this step you can ask in the comment section of this video and I will do my best to answer.



## Step 2 - Sketching In

Timestamp 4:43  
“Yin And Yang”

### PAINT

### BRUSHES & TOOLS

- Chalk Pencil or Watercolor Pencil

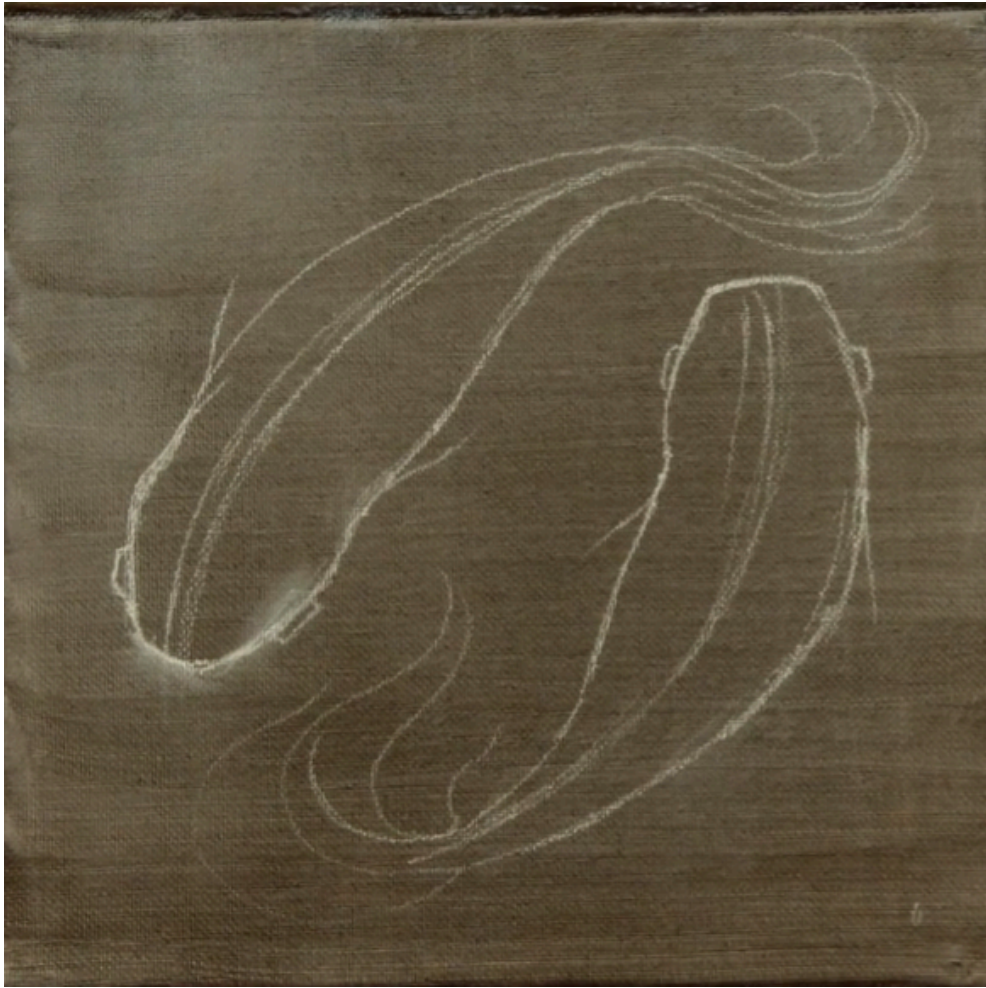
### COLOR MIXES

### STEP DISCUSSION

I chose to freehand this image but I have also provided a traceable if you prefer to use that method. There is no right or wrong way to get your image on the canvas. You can grid, transfer, or freehand, whatever makes you the most comfortable. If you choose to freehand, use the following picture and traceable as guides. I drew in only the major objects using a Chalk Pencil.

To sketch the fish, draw two opposite but interconnected curved lines as the spines, occupying a large area in the center of the canvas. Curve another smaller line at opposite ends of each fish, for the noses. Then, create the head of the fish on the right using parallel lines on either side of the spine. The body curves out, then tapers in where the tail begins. Repeat this for the left fish. Add eyes on the sides of each head, roughly sketch the fins along the sides, and decide on the curve of the tails before sketching them in.

## STEP 2 PHOTO



If you did not understand any part of this step you can ask in the comment section of this video and I will do my best to answer.

## Step 3 - Energetic Water

Timestamp 7:45

“Underwater Basket Weaving”

### PAINT

- Ultramarine Blue = **UB**
- Mars Black = **MB**
- Titanium White = **TW**

### BRUSHES & TOOLS

- Small Hog Round

### COLOR MIXES

- Blue Grey = **TW + UB > MB**
- Dark Blue = **UB + MB**

### STEP DISCUSSION

Load the brush with the **Blue Grey mix** and apply small curved strokes to the background to imply rippling water. It is ok and even preferred that the value of the mix varies. Continue throughout the background all around the fish, painting right over the tails.

Use the **Dark Blue mix** closer to the bodies of both fish. Weaving the lighter and darker value together. Rinse the brush.

Dry the surface before continuing to the next step.

### STEP 3 PHOTO



If you did not understand any part of this step you can ask in the comment section of this video and I will do my best to answer.



## Step 4 - Fish Underpainting

Timestamp 18:18

“Ready To Step In“

### PAINT

- Ultramarine Blue = **UB**
- Titanium White = **TW**

### BRUSHES & TOOLS

- Medium Synthetic Angle
- Small Filbert Grainer
- Chalk Pencil or Watercolor Pencil

### COLOR MIXES

- Cool White = **TW > UB**

### STEP DISCUSSION

Start with the left fish, use the **Cool White mix** to paint the body, using the edge of the brush to smoothly turn the body. Repeat on the right fish. Rinse the brush.

Use a Chalk Pencil to sketch the tails back onto the fish.

Switch to the Filbert Grainer and thin the **Cool White mix** for better flow. Use feathery, flowy strokes to paint the tails, letting the bristles do the work. Rinse the brush.

Dry the surface before continuing to the next step.

## STEP 4 PHOTO



If you did not understand any part of this step you can ask in the comment section of this video and I will do my best to answer.

# Step 5 - Orange Fish

Timestamp 25:28

“Continuity”

## PAINT

- Cadmium Red Medium = **CRM**
- Cadmium Yellow Medium = **CYM**
- Ultramarine Blue = **UB**
- Mars Black = **MB**
- Titanium White = **TW**
- Yellow Ochre = **YO**

## BRUSHES & TOOLS

- Small Synthetic Round

## COLOR MIXES

- Peach = **TW > (CRM > YO)**
- Yellow Orange = **CRM < CYM**
- Blue Grey = **TW + UB > MB**

## STEP DISCUSSION

Use the **Peach mix** to add a blush on the head and eyes of the left fish, using short brush strokes to imply the texture of the scales. Rinse the brush.

Tap the **Yellow Orange mix** onto the back of the left fish. Once again implying scales. Carry a few of these scales forward onto the head. And some of this color onto the fins, feathering it out at the end. Continue the scales along the back. Rinse the brush.

Incorporate **Blue Grey** scales as you reach the thinner area on the back, weaving some scales into the orange. If needed, add more Titanium White to keep this mix very light. Rinse the brush.

Apply some of the **Yellow Orange mix** onto the tail. Rinse the brush.

Dry the surface before continuing to the next step.

## STEP 5 PHOTO



If you did not understand any part of this step you can ask in the comment section of this video and I will do my best to answer.



## Step 6 - Red Fish

Timestamp 31:00

“Worth Its Weight In Gold“

### PAINT

- Cadmium Red Medium = **CRM**
- Quinacridone Magenta = **QM**
- Ultramarine Blue = **UB**
- Titanium White = **TW**
- Yellow Ochre = **YO**

### BRUSHES & TOOLS

- Small Synthetic Round

### COLOR MIXES

- Viva Magenta = **QM + CRM**
- Peach = **TW > (CRM > YO)**
- Cool White = **TW > UB**

### STEP DISCUSSION

The patterning on the red fish is more complicated. Be sure to refer to your reference photo at the end of this step. Start in the middle of the head and use the **Viva Magenta mix** with a tapping motion to imply scales. Add the pattern along the right side, then the left side, followed by the small pattern at the base of the body. Feather some color onto the right fin. Rinse the brush.

Tap the **Peach mix** to add a blush on the head and eyes on this fish, carefully weaving it around the patterning Rinse the brush.

Apply the remaining scales on the body using the **Cool White mix** and the same tapping motion. Make any adjustments to the shape of the fish and tail at this time. Rinse the brush.

Dry the surface before continuing to the next step.

## STEP 6 PHOTO



If you did not understand any part of this step you can ask in the comment section of this video and I will do my best to answer

## Step 7 - Scale Texture

Timestamp 36:44

“Tap, Tap, Tap”

### PAINT

- Cadmium Red Medium = **CRM**
- Cadmium Yellow Medium = **CYM**
- Phthalo Blue = **PB**
- Ultramarine Blue = **UB**
- Titanium White = **TW**
- Yellow Ochre = **YO**

### BRUSHES & TOOLS

- Small Synthetic Round

### COLOR MIXES

- Peach = **TW > (CRM > YO)**
- Cool White = **TW > UB**
- Light Blue = **TW > PB**
- Light Yellow = **CYM + TW**
- Orange = **CRM + CYM**

### STEP DISCUSSION

Begin by taping some highlights on to the head of the left fish, using Titanium White. Add a highlight on the top of the eyes and mouth. Ensure the head is blushed by using the **Peach mix**. Rinse the brush.

Apply the **Cool White mix** at the base of the body and on the tail, followed by a few small areas of the **Light Blue mix**. Rinse the brush.

Tap in some scales on the orange area of the fish using Cadmium Yellow Medium, then feather some of this color onto the left fin. Weave another layer of scales onto the back using the **Light Yellow mix**, and add some of this color onto the tail. Rinse the brush

Next, weave in some of the **Orange mix** for the slightly darker scales along either side of the body. Follow with a few scales along the sides using Cadmium Red Medium. Rinse the brush.

To finish, add highlights along the bottom of the body using Titanium White, followed by some Cadmium Yellow Medium blended onto the tail. Rinse the brush.

Dry the surface before continuing to the next step.

## STEP 7 PHOTO



If you did not understand any part of this step you can ask in the comment section of this video and I will do my best to answer.



## Step 8 - More Tapping

Timestamp 42:39

### “Tipping The Scales”

#### PAINT

- Cadmium Red Medium = **CRM**
- Quinacridone Magenta = **QM**
- Cadmium Yellow Medium = **CYM**
- Phthalo Blue = **PB**
- Ultramarine Blue = **UB**
- Titanium White = **TW**
- Yellow Ochre = **YO**

#### BRUSHES & TOOLS

- Small Synthetic Round

#### COLOR MIXES

- Peach = **TW > (CRM > YO)**
- Cool White = **TW > UB**
- Light Blue = **TW > PB**
- Viva Magenta = **QM + CRM**
- Orange = **CRM + CYM**

#### STEP DISCUSSION

Continue on the right fish as you did with the left, starting by adding another layer of the **Peach mix** onto the face. Rinse the brush.

Mix Titanium White with just a touch of the **Cool White mix** and tap another layer of scales throughout the lighter part of the body, extending some of this color onto the fin

Add subtle color through this fish by tapping in a few scales using the **Light Blue mix** with even more Titanium White. Rinse the brush.

Highlight the top of the head, eyes, and mouth with Titanium White, then continue highlighting scales, focusing mainly down the back of the spine. Rinse the brush.

Deepen the **Viva Magenta mix** by adding more Quinacridone Magenta, and tap in the darker scales on the patterning and onto the red fin. Without rinsing, add some scales using Cadmium Red Medium. Then, add brighter scales with the **Orange mix**, and feather some of this color onto the right fin. Rinse the brush.

Dry the surface before continuing to the next step.

## STEP 8 PHOTO



If you did not understand any part of this step you can ask in the comment section of this video and I will do my best to answer

## Step 9 - Fins And Tails

Timestamp 48:57

“Fluffing Out”

### PAINT

- Fluid White Paint = **FWP**

### BRUSHES & TOOLS

- Small Filbert Grainer
- Small Synthetic Round

### COLOR MIXES

### STEP DISCUSSION

Begin by loading the tip of the Filbert Grainer with Fluid White Paint. Define the curve of the tail on the left fish, using short curved strokes. Then, feather in some longer strokes of this color. Then, to the edge of the fins and tails, gently brush back some of the Fluid White Paint.

Repeat on the right fish. Rinse the brush.

Switch to the Round brush, and tap bright reflections onto the backs and the top of the eyes and mouth of both of these fish. Rinse the brush.

Sign.

## STEP 9 PHOTO



If you did not understand any part of this step you can ask in the comment section of this video and I will do my best to answer.

Traceable

