

The Art Sherpa Presents
Acrylic August-Day 18
Rocks And Stream
MidSummer Night's Stream

Name credit to Patron: Pam `Spivey



15 Steps

Difficulty: Challenging - 3 Hoot 🦉🦉🦉

Copyright © The Art Sherpa LLC, 2024. All Rights Reserved.

The content of this chapter, created and published by Cinnamon Cooney of The Art Sherpa LLC, is protected under international copyright laws. This material, including but not limited to text, images, paintings, and instructional content, is solely provided for the personal use of students for learning purposes.

No part of this material may be reproduced, distributed, displayed, transmitted, or otherwise used without the prior written permission of Cinnamon Cooney of The Art Sherpa LLC. This prohibition extends to both commercial and non-commercial uses. Any unauthorized use may infringe upon the intellectual property rights of The Art Sherpa LLC and could be subject to legal penalties.

By accessing, reading, or otherwise using this material, you, the student, agree to respect the intellectual property rights of The Art Sherpa LLC, and understand that this material is for your personal use and learning only.

It is your responsibility to understand and comply with all applicable local, state, national, and international laws when using this copyrighted material. All rights related to distribution, including the text and imagery within this work, are retained by Cinnamon Cooney, The Art Sherpa LLC.

For permission requests or inquiries, please contact The Art Sherpa LLC at support@theartsherpa.com.

Use policy

Student Use Policy of The Art Sherpa LLC

Personal Use: Students are allowed to print out the material provided by The Art Sherpa LLC for personal, at-home use. This includes studying and practicing techniques as presented in the material.

Private Parties: Students are permitted to make copies of the material for private parties, provided no money is exchanged in relation to the provision or use of the material. The use of the material is only for the purpose of facilitating the personal enjoyment and learning of painting within the confines of the private party.

Charitable Organizations: Libraries, educational institutions, and other non-profit organizations that exist to serve the community may request permission to print copies of the material for use in their efforts to help others. Such permission must be obtained directly from The Art Sherpa LLC at support@theartsherpa.com.

Painting Parties for Profit: If a student, individual, or business wishes to use the material for painting parties or events where profit is involved, a license must be purchased from The Art Sherpa LLC. This license allows the distribution of the material for the single business or single party only. It does not permit publication of the material in any other way, form, or through any other medium.

Any use of the material not expressly permitted in this Student Use Policy may infringe upon the intellectual property rights of The Art Sherpa LLC and could be subject to legal penalties

FOLLOW THE ART SHERPA

WEBSITE: <https://theartsherpa.com/>

FACEBOOK: <https://www.facebook.com/TheArtSherpa/>

INSTAGRAM: <https://www.instagram.com/theartsherpa>

PINTEREST: <https://www.pinterest.com/cinnamoncooney/>



#THEARTSHERPA
#STEPBYSTEPPAINTING
#ACRYLICPAINTING

ABOUT THE ART SHERPA:

Artwork and video is the sole property of The Art Sherpa™ and intended for the students personal education and Enjoyment. For questions regarding using any Art Sherpa painting in a commercial setting labs@theartsherpa.com for all other questions support@theartsherpa.com Read our full disclosure here that covers partnerships and affiliate links <http://bit.ly/affiliatedisclosureTAS>

TABLE OF CONTENTS

PAINT AND TOOL GUIDE	5
Video Chapter Guide	6
Step 1 - Colored Ground	7
STEP 1 PHOTO	8
Step 2 - Top Third Background	9
STEP 2 PHOTO	10
Step 3 - Block in Water	11
STEP 3 PHOTO	12
Step 4 - Sketch Shoreline And Boulders	13
STEP 4 PHOTO	14
Step 5 - Shadows Under Stones	15
STEP 5 PHOTO	16
Step 6 - Water Reflections	17
STEP 6 PHOTO	18
Step 7 - Smaller Stones And Pebbles	19
STEP 7 PHOTO	20
Step 8 - Coloring Stones	21
STEP 8 PHOTO	22
Step 9 - Painting In The Cracks	23
STEP 9 PHOTO	24
Step 10 - Greenery	25
STEP 10 PHOTO	26
Step 11 - Back Row Bright Greenery	27
STEP 11 PHOTO	28
Step 12 - Mid Ground Bright Greenery	29
STEP 12 PHOTO	30
Step 13 - Little Daisy Flowers	31
STEP 13 PHOTO	32
Step 14 - Little Poppies	33
STEP 14 PHOTO	34
Step 15 - Stems and Ripples	35
STEP 15 PHOTO	36
Traceable	37

PAINT AND TOOL GUIDE

Use this paint legend below to understand the symbols that I use to give you important painting information.

PAINT

- Cadmium Red Medium = **CRM**
- Quinacridone Magenta = **QM**
- Cadmium Yellow Medium = **CYM**
- Phthalo Blue = **PB**
- Ultramarine Blue = **UB**
- Phthalo Green = **PG**
- Burnt Sienna = **BS**
- Dioxazine Purple = **DP**
- Mars Black = **MB**
- Titanium White = **TW**
- Yellow Ochre = **YO**
- Fluid White Paint = **FWP**
- Golden's Acrylic Satin Glazing Liquid = **ASL**

BRUSHES & TOOLS

- X-Small Synthetic Round
- Small Synthetic Round
- Small Synthetic Filbert
- Large Synthetic Round Blender
- Medium Synthetic Round
- Large Synthetic Oval Mop

TOOLS

- T-Square Ruler
- Chalk Pencil or Watercolor Pencil
- 8X8 Canvas (If you notice that your canvas started to warp, as sometimes happens, just turn the canvas over and put it back side forward on your easel, then mist the back of the canvas. It usually resolves itself. Let it dry before you proceed.)
- Optional: Sta-Wet Palette

SYMBOL GUIDE

- > Less than previous amount
- < More than previous amount
- + Equal amount

Techniques You Will Use In This Painting

- Color Theory
- Implying Foliage
- Atmospheric Perspective
- Finding Value
- Dry Brushing
- Directionality
- Blending Wet into Wet
- Setting a Horizon line
- Color Mixing
- Dynamic Light on Water

Video Chapter Guide

Below are the timestamps we inserted in the tutorial video so that you can easily coordinate using the book and the tutorial video simultaneously.

Intro	00:00	
Step 1	02:50	Colored Ground
Step 2	04:50	Top Third Background
Step 3	07:15	Block In Water
Step 4	09:30	Sketch Shoreline And Boulders
Step 5	16:40	Shadows Under Stones
Step 6	20:50	Water Reflections
Step 7	26:27	Smaller Stones And Pebbles
Step 8	31:11	Coloring Stones
Step 9	41:45	Painting In The Cracks
Step 10	49:35	Greenery
Step 11	59:59	Back Row Bright Greenery
Step 12	1:06:16	Mid Ground Bright Greenery
Step 13	1:14:54	Little Daisy Flowers
Step 14	1:24:28	Little Poppies
Step 15	1:32:19	Stems and Ripples
	1:42:05	Sign

Step 1 - Colored Ground

Timestamp 2:50

“Color Story”

PAINT

- Phthalo Green = **PG**

BRUSHES & TOOLS

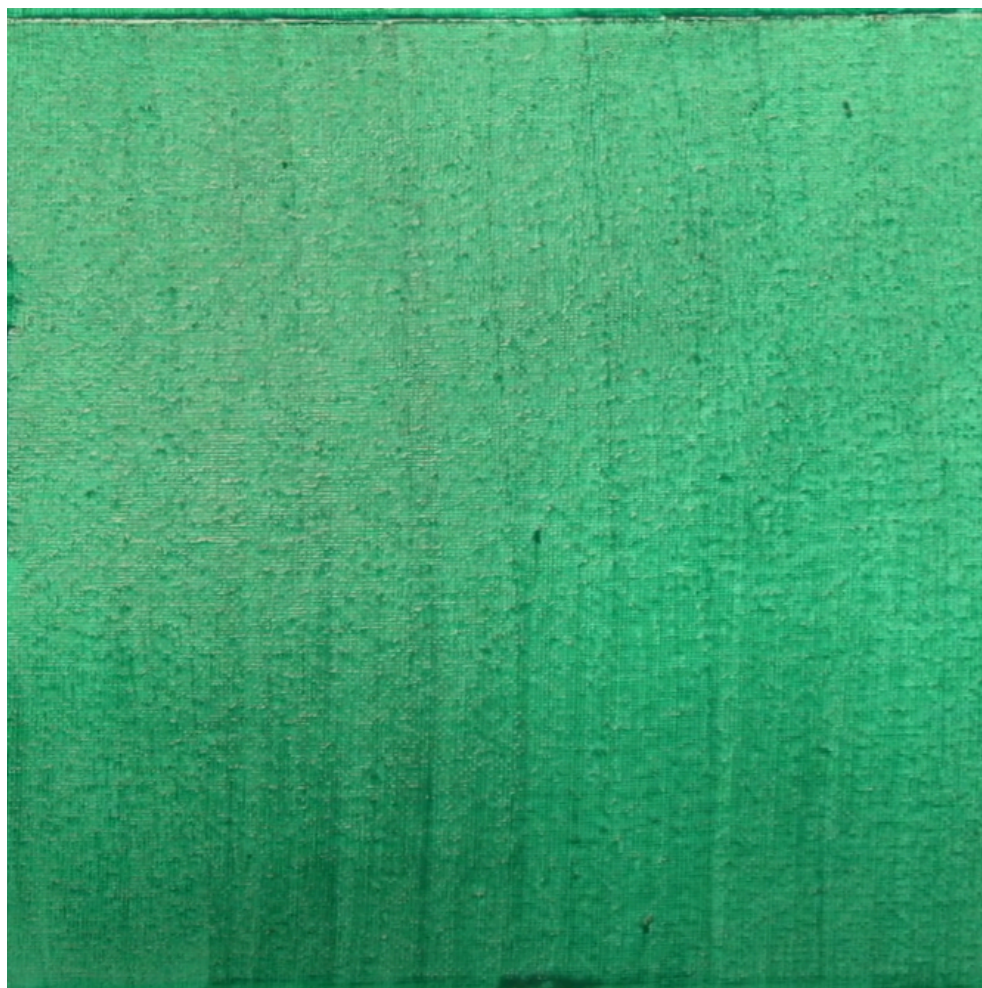
- Large Synthetic Oval Mop

STEP DISCUSSION

Load your brush with Phthalo Green and roughly cover the entire canvas. Use long vertical and horizontal strokes to smooth the paint and ensure complete coverage. Rinse the brush.

Dry the surface before continuing to the next step.

STEP 1 PHOTO



If you did not understand any part of this step you can ask in the comment section of this video and I will do my best to answer.

Step 2 - Top Third Background

Timestamp 4:50

“The Deep Forest”

PAINT

- Cadmium Yellow Medium = **CYM**
- Phthalo Blue = **PB**
- Burnt Sienna = **BS**
- Titanium White = **TW**
- Golden's Acrylic Satin Glazing Liquid = **ASL**

BRUSHES & TOOLS

- Large Synthetic Oval Mop

COLOR MIXES

- Deep Blue Green = **PB > BS**
- Lemon Yellow = **CYM > TW**

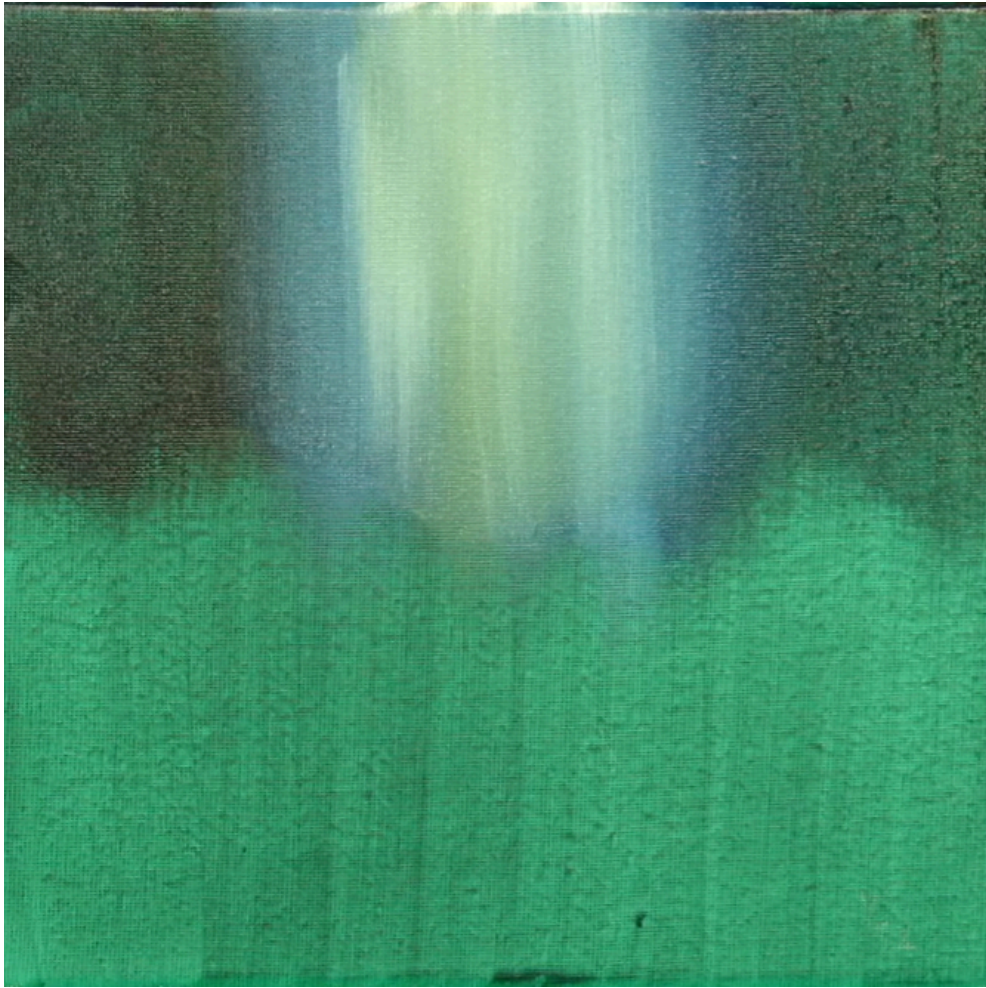
STEP DISCUSSION

Paint the upper $\frac{1}{3}$ to $\frac{1}{2}$ of the canvas with the **Deep Blue Green mix**, using a vertical stroke, and adding Satin Glazing Liquid as needed. To create a corridor of light shining through, blend Titanium White, wet into wet, focusing through the middle of the background. While the paint is still wet, add the **Lemon Yellow mix** through the center of the light area.

Finally, lightly layer more Titanium White over top of the corridor of light. Rinse the brush.

Dry the surface before continuing to the next step.

STEP 2 PHOTO



If you did not understand any part of this step you can ask in the comment section of this video and I will do my best to answer.

Step 3 - Block in Water

Timestamp 7:15

“Blended Reflections”

PAINT

- Cadmium Yellow Medium = **CYM**
- Phthalo Blue = **PB**
- Burnt Sienna = **BS**
- Titanium White = **TW**

BRUSHES & TOOLS

- Large Synthetic Oval Mop

COLOR MIXES

- Deep Blue Green = **PB > BS**
- Lemon Yellow = **CYM > TW**

STEP DISCUSSION

Paint the background for the lower half of the canvas using the **Deep Blue Green mix** and a horizontal stroke. While the paint is still wet, begin adding Titanium White through the middle of the lower background. Create a V shaped corridor of light through this watery background by using short horizontal strokes, starting smaller near the top, then getting wider as you move towards the bottom of the canvas. Next, apply light strokes over top to blend the paint wet into wet.

Follow that by blending in some of the **Lemon Yellow mix** while the paint is still wet. Rinse the brush.

Dry the surface before continuing to the next step.

STEP 3 PHOTO



If you did not understand any part of this step you can ask in the comment section of this video and I will do my best to answer.

Step 4 - Sketch Shoreline And Boulders

Timestamp 9:30

“Good Rockin” Tonight“

PAINT

- Burnt Sienna = **BS**
- Mars Black = **MB**
- Titanium White = **TW**
- Golden's Acrylic Satin Glazing Liquid = **ASL**

BRUSHES & TOOLS

- Medium Synthetic Round

COLOR MIXES

- Chocolate = **BS + MB > TW**

STEP DISCUSSION

I chose to freehand this image but I have also provided a traceable if you prefer to use that method. There is no right or wrong way to get your image on the canvas. You can grid, transfer, or freehand, whatever makes you the most comfortable. If you are free handing, you have the picture that follows this step, and the traceable to assist you. I drew in only the major objects using a Chalk Pencil.

Load Mars Black onto the brush and starting at the top center of the lighter water, begin sketching in an angled shoreline to the left that goes off the canvas about an inch from the bottom. Angle the shoreline on the right as well, but take it off the canvas at about the two inch mark.

Use the **Chocolate mix** to sketch a boulder onto the canvas just above and to the right of the pointy part of the shoreline. Give it an irregular shape that also goes off the canvas on the right, then fill it in with the **Chocolate mix**. The next boulder is a bit rounder on top and just to the left of the pointy part of the shoreline, paint that one in as well. A third smaller, squarer rock lives above the big one on the right.

There are several smaller rocks throughout the foreground, use the traceable or the photo that follows this step for shape, size and placement. Lighten the mix with more Titanium White where you need to visually separate the forward rocks from the rocks behind. Add Satin Glazing Liquid when you need to improve flow. Rinse the brush.

Dry the surface before continuing to the next step.

STEP 4 PHOTO



If you did not understand any part of this step you can ask in the comment section of this video and I will do my best to answer.

Step 5 - Shadows Under Stones

Timestamp 16:40
“Rock Bottom”

PAINT

- Mars Black = **MB**
- Golden's Acrylic Satin Glazing Liquid = **ASL**

BRUSHES & TOOLS

- Medium Synthetic Round

COLOR MIXES

STEP DISCUSSION

Use Mars Black to paint in the area between the two big boulders at the center of the canvas. This will become the shadows for the smaller stones that will be painted there later. Also paint the shadows below the large boulders, and along the shoreline. Use either water or Satin Glazing Liquid to improve flow, as needed. Rinse the brush.

Dry the surface before continuing to the next step.

STEP 5 PHOTO



If you did not understand any part of this step you can ask in the comment section of this video and I will do my best to answer.

Step 6 - Water Reflections

Timestamp 20 50

“Walk Without Rhythm“

PAINT

- Cadmium Yellow Medium = **CYM**
- Phthalo Blue = **PB**
- Phthalo Green = **PG**
- Burnt Sienna = **BS**
- Titanium White = **TW**
- Golden's Acrylic Satin Glazing Liquid = **ASL**

BRUSHES & TOOLS

- Large Synthetic Round Blende

COLOR MIXES

- Dark Blue = **PB + MB**
- Mid Blue Green = **PB > BS + TW**
- Yellow Green = **CYM > PG**
- Deep Blue Green = **PB > BS**

STEP DISCUSSION

Add some Satin Glazing Liquid to the **Dark Blue mix** and begin to add dark shadows to the water edges using short horizontal strokes. Also add shadows under the stones that lay in the water, blending it outward a little.

Use the **Mid Blue Green mix** and short horizontal strokes to add a light reflection coming across the water. Blending it slightly and irregularly into the dark edges.

Apply very light strokes of the **Yellow Green mix** throughout the water. Use the **Mid Blue Green mix** if you need to adjust the color of the water. Rinse the brush.

Mix some Satin Glazing Liquid to Titanium White and blend it wet into wet, through the middle of the water to imply the light reflected there.

Adjust the shadows along the edge of the water with the **Deep Blue Green mix**. Rinse the brush.

Dry the surface before continuing to the next step.

STEP 6 PHOTO



If you did not understand any part of this step you can ask in the comment section of this video and I will do my best to answer

Step 7 - Smaller Stones And Pebbles

Timestamp 26:27

“Supportive Stones“

PAINT

- Ultramarine Blue = **UB**
- Burnt Sienna = **BS**
- Mars Black = **MB**
- Titanium White = **TW**
- Yellow Ochre = **YO**
- Golden's Acrylic Satin Glazing Liquid = **ASL**

BRUSHES & TOOLS

- Medium Synthetic Round

COLOR MIXES

- Paynes Grey = **UB + MB**
- Warm Brown = **BS > MB > YO**
- Light Grey = **TW > (UB + MB)**

STEP DISCUSSION

Add a little Titanium White to the **Paynes Grey mix** and piece in smaller stones between the two big boulders in the middle of the canvas. Rinse the brush.

Paint the small pebbles that are between the stones along the shoreline, with the **Warm Brown mix**. Add Titanium White to the mix and paint highlights that vary in lightness, on top of those pebbles. Rinse the brush.

Apply highlights to the top of the smaller center stones with the **Light Grey mix**. Add Satin Glazing Liquid if needed. Rinse the brush.

Dry the surface before continuing to the next step.

STEP 7 PHOTO



If you did not understand any part of this step you can ask in the comment section of this video and I will do my best to answer.

Step 8 - Coloring Stones

Timestamp 31:11

“Painting Some Personality“

PAINT

- Ultramarine Blue = **UB**
- Burnt Sienna = **BS**
- Mars Black = **MB**
- Titanium White = **TW**
- Yellow Ochre = **YO**

BRUSHES & TOOLS

- Small Synthetic Filbert

COLOR MIXES

- Warm Brown = **BS > MB > YO**
- Light Grey = **TW > (UB + MB)**
- Muted Sienna = **BS > MB**
- Warm Sienna = **BS + YO**

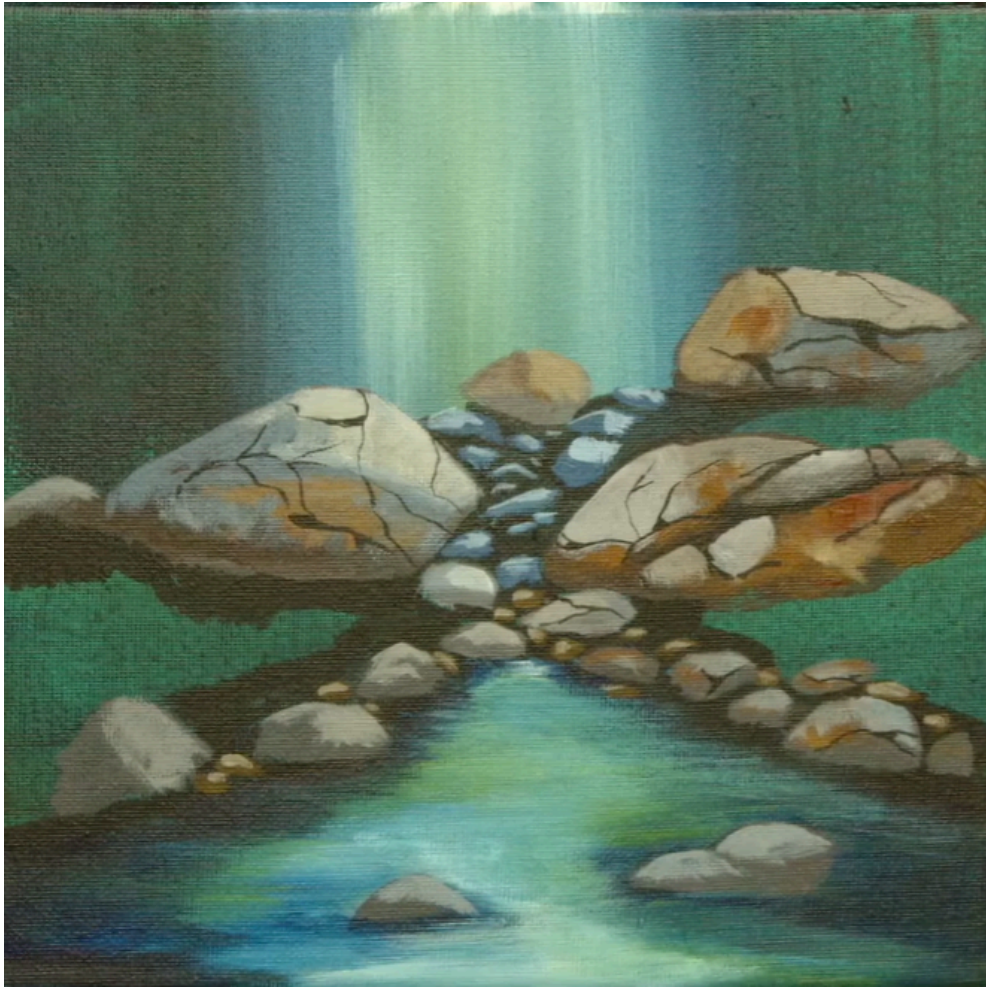
STEP DISCUSSION

Use the **Warm Brown mix** to roughly dry brush some more color onto the bottom of the right boulder. Scumble the **Light Grey mix** to the top of this boulder. If you need to warm up this color any place, add a bit of Yellow Ochre to the mix. Add a few highlights to the bottom of this rock as well. Add more Titanium White to the mix and paint an even lighter highlight in places, on this rock. Paint another value on the bottom of this boulder with the **Muted Sienna mix**. Rinse the brush. Vary these mixes as needed to give the rocks personality and to develop different planes on them, occasionally adding in some **Warm Sienna mix**.

Repeat this process on the other boulders and some of the larger rocks to create different planes, and rinse the brush as needed.

Dry the surface before continuing to the next step.

STEP 8 PHOTO



If you did not understand any part of this step you can ask in the comment section of this video and I will do my best to answer

Step 9 - Painting In The Cracks

Timestamp 41:45

“Fissures“

PAINT

- Mars Black = **MB**
- Golden's Acrylic Satin Glazing Liquid = **ASL**

BRUSHES & TOOLS

- Small Synthetic Round

COLOR MIXES

STEP DISCUSSION

Thin some Mars Black with a little bit of water. Paint in the cracks throughout the boulder and some, but not all, of the rocks. Use the reference photo that follows this step for placement of these cracks. Some will be thicker and some will be thinner, depending on how deep they are. Use Satin Glazing Liquid occasionally to improve the flow. Rinse the brush.

Dry the surface before continuing to the next step.

STEP 9 PHOTO



If you did not understand any part of this step you can ask in the comment section of this video and I will do my best to answer.

Step 10 - Greenery

Timestamp 49:35

“The Green Green Grass Of Home“

PAINT

- Cadmium Yellow Medium = **CYM**
- Phthalo Green = **PG**
- Burnt Sienna = **BS**
- Golden's Acrylic Satin Glazing Liquid = **ASL**

BRUSHES & TOOLS

- Medium Synthetic Round

COLOR MIXES

- Gold Green = **CYM + PG + BS**
- Dark Green = **PG + BS**

STEP DISCUSSION

Add some Satin Glazing Liquid to the **Gold Green mix**. Flick random upward strokes for blades of grass starting on the left side behind the boulders and rocks and working to right. Occasionally tap the brush up and down. This is the first darkest layer. Add the **Dark Green mix** in areas that see the least amount of light. Fill in these grasses, around, between, behind and in front of the stones. Rinse the brush.

Dry the surface before continuing to the next step.

STEP 10 PHOTO



If you did not understand any part of this step you can ask in the comment section of this video and I will do my best to answer.

Step 11 - Back Row Bright Greenery

Timestamp 59:59

“Studio Ghibli”

PAINT

- Cadmium Yellow Medium = **CYM**
- Phthalo Green = **PG**
- Burnt Sienna = **BS**
- Fluid White Paint = **FWP**
- Golden's Acrylic Satin Glazing Liquid = **ASL**

BRUSHES & TOOLS

- X-Small Synthetic Round

COLOR MIXES

- Yellow Green = **CYM + PG + BS**
- Gold Green = **CYM + PG + BS**

STEP DISCUSSION

Mix Satin Glazing Liquid with the **Yellow Green mix**. Add this second value to the grass behind the boulders that are at the top of the landscape. Flick small upward lines to some blades of grass and small dashes on others. Use the **Gold Green mix** along the edges of the rocks to ensure the grass appears to be coming from behind them and not floating above them.

Add some Fluid White Paint into the **Yellow Green mix** and highlight those grasses using delicate lines and dots. Rinse the brush.

Dry the surface before continuing to the next step.

STEP 11 PHOTO



If you did not understand any part of this step you can ask in the comment section of this video and I will do my best to answer.

Step 12 - Mid Ground Bright Greenery

Timestamp 1:06:16

“Healthy Well Fed Grass”

PAINT

- Cadmium Yellow Medium = **CYM**
- Phthalo Green = **PG**
- Burnt Sienna = **BS**
- Fluid White Paint = **FWP**
- Golden's Acrylic Satin Glazing Liquid = **ASL**

BRUSHES & TOOLS

- X-Small Synthetic Round

COLOR MIXES

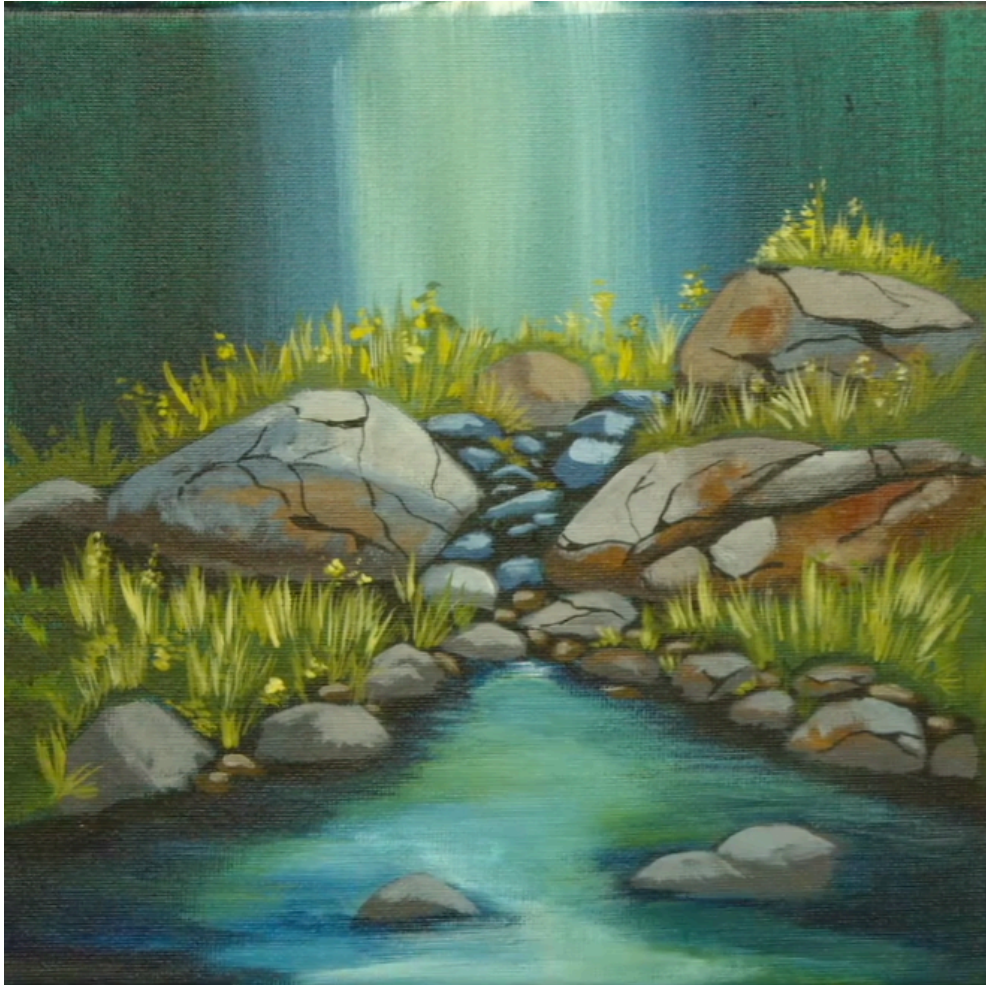
- Yellow Green = **CYM + PG + BS**
- Gold Green = **CYM + PG + BS**

STEP DISCUSSION

Paint the grasses in the mid ground using the same process and colors that you used in the previous step. Also tuck some of the grasses around, between, behind and in front of the stones. Rinse the brush.

Dry the surface before continuing to the next step.

STEP 12 PHOTO



If you did not understand any part of this step you can ask in the comment section of this video and I will do my best to answer.

Step 13 - Little Daisy Flowers

Timestamp 1:14:54

“Tiny Flowers“

PAINT

- Cadmium Yellow Medium = **CYM**
- Ultramarine Blue = **UB**
- Mars Black = **MB**
- Titanium White = **TW**
- Fluid White Paint = **FWP**

BRUSHES & TOOLS

- X-Small Synthetic Round

COLOR MIXES

- Dark Ochre = **YO + MB**
- Paynes Grey = **UB + MB**
- Bright Yellow = **CYM + FWP**

STEP DISCUSSION

Paint the centers of the daisies first so you can create somewhat of a guide to their placement. Use the photo that follows this step to help with that. The centers are small ellipses that are placed in a variety of directions and painted with the **Dark Ochre mix**. These flower clusters are mostly focused on the left side of the canvas with the exception of a few that are floating on the water. Rinse the brush.

Use the **Paynes Grey mix** to add a few small rocks into the water and along the bottoms of the other rocks in the water to anchor them. Also use this color to paint a few blades of grass that are growing out of the water. Rinse the brush.

Use Titanium White to carefully paint the tiny petals of these flowers around the centers you previously put onto the canvas. Some petals will be shorter to give the impression that these flowers are facing in different directions. Thin the paint with water as needed. Rinse the brush.

Highlight the top of the flower centers using the **Bright Yellow mix**. Allow the bottom of these centers to remain dark, implying there is a shadow there. Rinse the brush.

Dry the surface before continuing to the next step.

STEP 13 PHOTO



If you did not understand any part of this step you can ask in the comment section of this video and I will do my best to answer.

Step 14 - Little Poppies

Timestamp 1:24:28

“Nature Loves Variety“

PAINT

- Cadmium Red Medium = **CRM**
- Quinacridone Magenta = **QM**
- Cadmium Yellow Medium = **CYM**
- Ultramarine Blue = **UB**
- Mars Black = **MB**
- Titanium White = **TW**
- Fluid White Paint = **FWP**

BRUSHES & TOOLS

- X-Small Synthetic Round

COLOR MIXES

- Bright Orange = **CYM > CRM**
- Dark Orange = **CYM > CRM + QM**
- Paynes Grey = **UB + MB**

STEP DISCUSSION

Tap curved lines into each other using the **Bright Orange mix**. Start between the two boulders on the right side, occasionally tucking a few into the grass. Continue adding these flower clusters to the midground on either side of the stream. Rinse the brush.

Tint some Titanium White with just a smidge of Ultramarine Blue, then paint tiny round flowers to the midground on either side of the stream. Rinse the brush.

Add a few poppy petals floating on the surface of the water with the **Bright Orange mix**. Rinse the brush

Paint a second value onto the poppies using the **Dark Orange mix**. Allow some of the lighter color below to show through. Tuck a few of these flowers into the grass and paint this second value onto the petals that are floating on the water. Rinse the brush.

Paint the centers of the round white flowers with the **Paynes Grey mix**. Rinse the brush.

Dry the surface before continuing to the next step.

.

STEP 14 PHOTO



If you did not understand any part of this step you can ask in the comment section of this video and I will do my best to answer.

Step 15 - Stems and Ripples

Timestamp 132:19

“Wind Rippling”

PAINT

- Cadmium Yellow Medium = **CYM**
- Ultramarine Blue = **UB**
- Phthalo Green = **PG**
- Burnt Sienna = **BS**
- Mars Black = **MB**
- Titanium White = **TW**
- Fluid White Paint = **FWP**
- Golden's Acrylic Satin Glazing Liquid = **ASL**

BRUSHES & TOOLS

- X-Small Synthetic Round

COLOR MIXES

- Yellow Green = **CYM + PG + BS**
- Chocolate = **BS + MB > TW**
- Paynes Grey = **UB + MB**

STEP DISCUSSION

Add some Fluid White Paint into the **Yellow Green mix** and paint some stems for the flowers at the top of the grassy area. Rinse the brush.

Tint some Titanium White with just a smidge of Ultramarine Blue, and add some Satin Glazing Liquid. Paint some reflections around the base of the stones that line the edges of the water. Also add reflections below the rocks and grasses that are in the water. Rinse the brush.

Add some Fluid White Paint into the **Chocolate mix** to really lighten the color. Mix in a drop of water if needed. Very carefully add a highlight to some of the cracks on the boulders and rocks. Rinse the brush. Once those highlights are dry you can glaze them back with Satin Glazing Liquid tinted with a little of the **Paynes Grey mix**. Also use this glaze to add some shadows on other rocks where needed. Rinse the brush.

Tint some Titanium White with just a smidge of Ultramarine Blue and paint ripples reflected through the corridor of light within the water. Rinse the brush.

Sign.

STEP 15 PHOTO



If you did not understand any part of this step you can ask in the comment section of this video and I will do my best to answer.

Traceable

