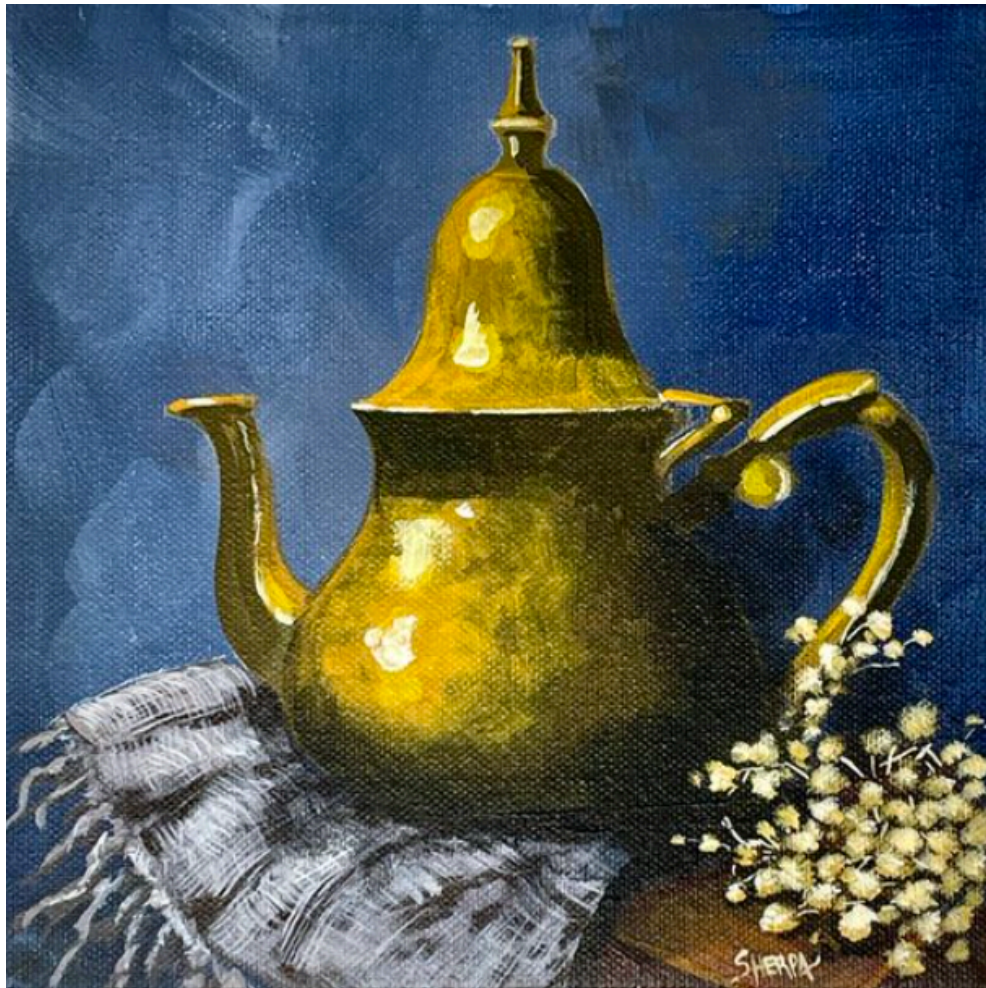


The Art Sherpa Presents
Acrylic August-Day 24
Teapot

I'm A Little Teapot
Name credit to Patron: Katy Gutierrez



12 Steps

Difficulty: Challenging - 3 Hoot 🦉🦉🦉

Copyright © The Art Sherpa LLC, 2024. All Rights Reserved.

The content of this chapter, created and published by Cinnamon Cooney of The Art Sherpa LLC, is protected under international copyright laws. This material, including but not limited to text, images, paintings, and instructional content, is solely provided for the personal use of students for learning purposes.

No part of this material may be reproduced, distributed, displayed, transmitted, or otherwise used without the prior written permission of Cinnamon Cooney of The Art Sherpa LLC. This prohibition extends to both commercial and non-commercial uses. Any unauthorized use may infringe upon the intellectual property rights of The Art Sherpa LLC and could be subject to legal penalties.

By accessing, reading, or otherwise using this material, you, the student, agree to respect the intellectual property rights of The Art Sherpa LLC, and understand that this material is for your personal use and learning only.

It is your responsibility to understand and comply with all applicable local, state, national, and international laws when using this copyrighted material. All rights related to distribution, including the text and imagery within this work, are retained by Cinnamon Cooney, The Art Sherpa LLC.

For permission requests or inquiries, please contact The Art Sherpa LLC at support@theartsherpa.com.

Use policy

Student Use Policy of The Art Sherpa LLC

Personal Use: Students are allowed to print out the material provided by The Art Sherpa LLC for personal, at-home use. This includes studying and practicing techniques as presented in the material.

Private Parties: Students are permitted to make copies of the material for private parties, provided no money is exchanged in relation to the provision or use of the material. The use of the material is only for the purpose of facilitating the personal enjoyment and learning of painting within the confines of the private party.

Charitable Organizations: Libraries, educational institutions, and other non-profit organizations that exist to serve the community may request permission to print copies of the material for use in their efforts to help others. Such permission must be obtained directly from The Art Sherpa LLC at support@theartsherpa.com.

Painting Parties for Profit: If a student, individual, or business wishes to use the material for painting parties or events where profit is involved, a license must be purchased from The Art Sherpa LLC. This license allows the distribution of the material for the single business or single party only. It does not permit publication of the material in any other way, form, or through any other medium.

Any use of the material not expressly permitted in this Student Use Policy may infringe upon the intellectual property rights of The Art Sherpa LLC and could be subject to legal penalties

FOLLOW THE ART SHERPA

WEBSITE: <https://theartsherpa.com/>

FACEBOOK: <https://www.facebook.com/TheArtSherpa/>

INSTAGRAM: <https://www.instagram.com/theartsherpa>

PINTEREST: <https://www.pinterest.com/cinnamoncooney/>



#THEARTSHERPA
#STEPBYSTEPPAINTING
#ACRYLICPAINTING

ABOUT THE ART SHERPA:

Artwork and video is the sole property of The Art Sherpa™ and intended for the students personal education and Enjoyment. For questions regarding using any Art Sherpa painting in a commercial setting labs@theartsherpa.com for all other questions support@theartsherpa.com Read our full disclosure here that covers partnerships and affiliate links <http://bit.ly/affiliatedisclosureTAS>

TABLE OF CONTENTS

PAINT AND TOOL GUIDE	5
Video Chapter Guide	6
Step 1 - Colored Ground	7
STEP 1 PHOTO	8
Step 2 - Atmospheric Perspective	9
STEP 2 PHOTO	10
Step 3 - Transfer Image	11
STEP 3 PHOTO	12
Step 4 - Blocking In	13
STEP 4 PHOTO	14
Step 5 - Table And Cloth	15
STEP 5 PHOTO	16
Step 6 - Fabric Texture	17
STEP 6 PHOTO	18
Step 7 - Teapot Values	19
STEP 7 PHOTO	20
Step 8 - Teapot Highlights And Shadows	21
STEP 8 PHOTO	22
Step 9 - Teapot Shine	23
STEP 9 PHOTO	24
Step 10 - Shadows	25
STEP 10 PHOTO	26
Step 11 - Baby's Breath	27
STEP 11 PHOTO	28
Step 12 - Finishing Touches	29
STEP 12 PHOTO	30
Traceable	31

PAINT AND TOOL GUIDE

Use this paint legend below to understand the symbols that I use to give you important painting information.

PAINT

- Cadmium Red Medium = **CRM**
- Cadmium Yellow Medium = **CYM**
- Ultramarine Blue = **UB**
- Burnt Sienna = **BS**
- Mars Black = **MB**
- Titanium White = **TW**
- Yellow Ochre = **YO**
- Fluid White Paint = **FWP**
- Golden's Acrylic Satin Glazing Liquid = **ASL**

BRUSHES & TOOLS

- X-Small Synthetic Round
- Small Synthetic Round
- Medium Hog Round
- Small Synthetic Filbert Grainer
- Medium Synthetic Round Blender
- Large Synthetic Oval Mop
- Medium Synthetic Angle

TOOLS

- Saral Paper
- Pen
- 8x8 Canvas (If you notice that your canvas started to warp, as sometimes happens, just turn the canvas over and put it back side forward on your easel, then mist the back of the canvas. It usually resolves itself. Let it dry before you proceed.)
- Optional: Sta-Wet Palette

SYMBOL GUIDE

- > Less than previous amount
- < More than previous amount
- + Equal amount

Techniques You Will Use In This Painting

- Color Theory
- Implying Foliage
- Expressive Painting Strokes
- Being Painterly and Loose
- Atmospheric Perspective
- Finding Value
- Dry Brushing
- Directionality
- Blending Wet into Wet
- Color Mixing

Video Chapter Guide

Below are the timestamps we inserted in the tutorial video so that you can easily coordinate using the book and the tutorial video simultaneously.

Intro	00:00	
Step 1	02:56	Colored Ground
Step 2	05:00	Atmospheric Perspective
Step 3	07:51	Transfer Image
Step 4	12:35	Blocking In
Step 5	19:53	Table And Cloth
Step 6	25:29	Fabric Texture
Step 7	29:37	Teapot Values
Step 8	38:18	Teapot Highlights And Shadows
Step 9	43:17	Teapot Shine
Step 10	47:35	Shadows
Step 11	49:33	Baby's Breath
Step 12	54:21	Finishing Touches
	1:01:04	Sign

Step 1 - Colored Ground

Timestamp 2:56

“Thoroughly Cover”

PAINT

- Ultramarine Blue = **UB**
- Mars Black = **MB**
- Titanium White = **TW**

BRUSHES & TOOLS

- Large Synthetic Oval Mop

COLOR MIXES

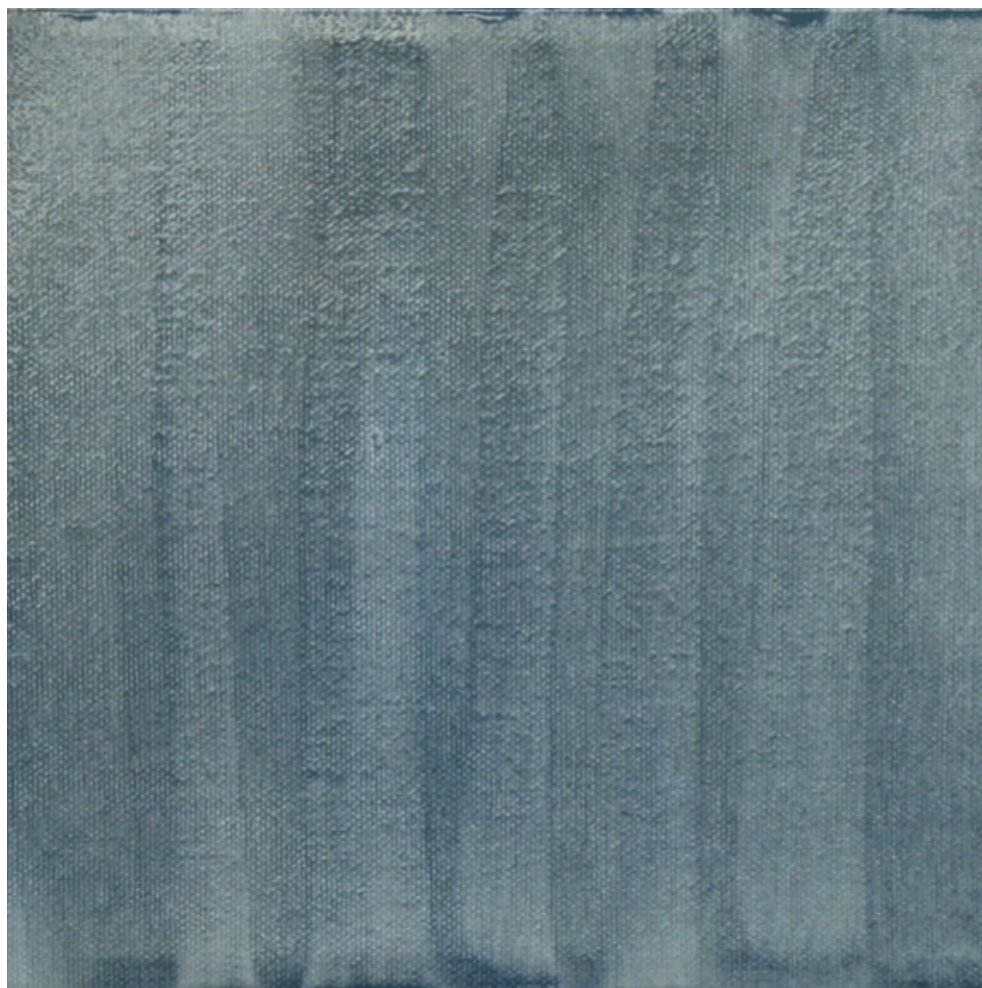
- Blue Grey = **UB + MB > TW**

STEP DISCUSSION

Load your brush with the **Blue Grey mix** and roughly cover the entire canvas. Use long vertical and horizontal strokes to smooth the paint and ensure complete coverage. Rinse the brush.

Dry the surface before continuing to the next step.

STEP 1 PHOTO



If you did not understand any part of this step you can ask in the comment section of this video and I will do my best to answer.

Step 2 - Atmospheric Perspective

Timestamp 5:00

“Background Richness”

PAINT

- Ultramarine Blue = **UB**
- Mars Black = **MB**
- Titanium White = **TW**
- Golden's Acrylic Satin Glazing Liquid = **ASL**

BRUSHES & TOOLS

- Large Synthetic Oval Mop

COLOR MIXES

- Blue Grey = **UB + MB > TW**
- Paynes Grey = **MB + UB**

STEP DISCUSSION

Paint the entire bottom and the top right side of the canvas with the **Paynes Grey mix**, and a little Satin Glazing Liquid. As you get to the top left side, begin using the **Blue Grey mix**, to imply a faint light source. Blend that in using light diagonal strokes in either direction.

Lighten that corner further by brushing in Satin Glazing Liquid and Titanium White, weaving and blending it in. Rinse the brush.

Dry the surface before continuing to the next step.

STEP 2 PHOTO



If you did not understand any part of this step you can ask in the comment section of this video and I will do my best to answer.

Step 3 - Transfer Image

Timestamp 7:51
“Tall And Stout“

PAINT

BRUSHES & TOOLS

- Saral Paper
- Pen

COLOR MIXES

STEP DISCUSSION

To transfer the line drawing onto the canvas, first print out the traceable. Cut it to your canvas size and then cut a sheet of a light colored saral paper to canvas size. Tape all four sides, being sure to place the dusty side of the Saral paper down. Place the figure where you want it, keep it tight, and tape it down securely. Use a ballpoint pen and firmly press down on all the lines, hard enough that white lines will be left behind. Check to see if it worked well enough. You should be able to faintly see the lines, like a little ghost image.

STEP 3 PHOTO



If you did not understand any part of this step you can ask in the comment section of this video and I will do my best to answer.

Step 4 - Blocking In

Timestamp 12:35
“Choosing Values”

PAINT

- Cadmium Red Medium = **CRM**
- Cadmium Yellow Medium = **CYM**
- Burnt Sienna = **BS**
- Mars Black = **MB**
- Titanium White = **TW**
- Yellow Ochre = **YO**

BRUSHES & TOOLS

- Medium Synthetic Angle

COLOR MIXES

- Brown Grey = **BS + MB > TW**
- Dark Brown = **BS + MB**
- Copper = **CY > CR + YO > MB**

STEP DISCUSSION

Block in the fabric with the **Brown Grey mix**. Rinse the brush, then paint the table top using the Burnt Sienna. The shadow area under the table is painted with the **Dark Brown mix**. Rinse the brush.

Block in the teapot using the **Copper mix**, carefully painting around the curves using the corner of the brush. Rinse the brush.

Dry the surface before continuing to the next step.

STEP 4 PHOTO



If you did not understand any part of this step you can ask in the comment section of this video and I will do my best to answer.

Step 5 - Table And Cloth

Timestamp 19:53

“Frayed Worn Fabric“

PAINT

- Cadmium Red Medium = **CRM**
- Cadmium Yellow Medium = **CYM**
- Burnt Sienna = **BS**
- Mars Black = **MB**
- Titanium White = **TW**

BRUSHES & TOOLS

- Medium Synthetic Angle

COLOR MIXES

- Brown Grey = **BS + MB > TW**
- Dark Orange = **CR + CY > BS**
- Dark Brown = **BS + MB**

STEP DISCUSSION

Line the edges of the table using the **Dark Orange mix**, then lightly dry brush a diagonal texture across the table top. Rinse the brush.

Lighten the **Brown Grey mix** with more Titanium White. Apply short little strokes that imply the folds and texture of the fabric. Use the **Dark Brown mix** to the shadowed area where the back of the teapot casts a shade on the cloth, as well as directly beneath the bottom of the teapot. Also tap in some shadows in the deepest folds of the cloth. Use Mars Black as a shadow between the cloth and the table, blending it into the shadow at the back of the teapot.

Load a loosely mixed version of the **Brown Grey mix** and paint the fringes coming off the bottom edge of the cloth. Lighten it with more Titanium White and highlight them. Also tap in some tiny marks to imply some frayed edges. Rinse the brush.

Dry the surface before continuing to the next step.

STEP 5 PHOTO



If you did not understand any part of this step you can ask in the comment section of this video and I will do my best to answer.

Step 6 - Fabric Texture

Timestamp 25:29
“Cross Hatching”

PAINT

- Burnt Sienna = **BS**
- Mars Black = **MB**
- Titanium White = **TW**
- Golden's Acrylic Satin Glazing Liquid = **ASL**

BRUSHES & TOOLS

- Small Synthetic Filbert Grainer

COLOR MIXES

- Brown Grey = **BS + MB > TW**

STEP DISCUSSION

Lighten the **Brown Grey mix** with more Titanium White and add Satin Glazing Liquid. Load the paint on the tip of the brush and make little curved lines, use directionality, some curves are up and others curves are under. Then using very light pressure, paint thin lines in the opposite direction, going across to imply the weave of the fabric. Add even more Titanium White to create highlight marks on the edges of the folds, strings, and frayed fabric. Rinse the brush.

Dry the surface before continuing to the next step.

Sherpa Tip: If the canvas is completely dry you can use any clean, damp brush to remove the remaining chalk lines.

STEP 6 PHOTO



If you did not understand any part of this step you can ask in the comment section of this video and I will do my best to answer

Step 7 - Teapot Values

Timestamp 29:37

“Sculpting”

PAINT

- Cadmium Red Medium = **CRM**
- Cadmium Yellow Medium = **CYM**
- Mars Black = **MB**
- Yellow Ochre = **YO**
- Golden's Acrylic Satin Glazing Liquid = **ASL**

BRUSHES & TOOLS

- Small Synthetic Round

COLOR MIXES

- Copper = **CY > CR + YO > MB**
- Dark Copper = **CY > CR + YO + MB**
- Gold = **CY + YO**

STEP DISCUSSION

To paint the spout of the teapot start with a shadow under the curve using the Dark copper mix. Paint a highlight on the top edge and curve using the **Copper mix**, then layer some of the **Gold mix** on top.

Repeat this process on the lid of the pot, applying lighter mixes on the left and the darker mix on the right. Use Satin Glazing Liquid to blend and transition between the colors. Lighten or darken any of the mixes as you feel is needed. Adjust the lightness or darkness of the mixes as needed. To add a pounded texture to the pot, swirl some diffused marks to create the transition.

Use this same method on the rest of the teapot and the handle, using brush directionality to help sculpt the shape of the pot. Rinse the brush.

Dry the surface before continuing to the next step.

STEP 7 PHOTO



If you did not understand any part of this step you can ask in the comment section of this video and I will do my best to answer.

Step 8 - Teapot Highlights And Shadows

Timestamp 38:18
“Hammered Copper”

PAINT

- Cadmium Red Medium = **CRM**
- Cadmium Yellow Medium = **CYM**
- Burnt Sienna = **BS**
- Mars Black = **MB**
- Yellow Ochre = **YO**

BRUSHES & TOOLS

- Medium Synthetic Angle

COLOR MIXES

- Copper = **CY > CR + YO > MB**
- Dark Copper = **CY > CR + YO + MB**
- Light Copper = **CY > CR + YO**
- Warm Brown = **CY > BS**

STEP DISCUSSION

Highlight the belly of the pot with the **Light Copper mix**, using multi directional, dry brush strokes to give it a hammered feel. Add highlights to the top of the lid, then paint a sharp edge along the bottom. Repeat the hammering effect as you move upward to blend with the highlight at the top. Also give a little stronger highlight on the handles of the lid and the pot, and on the spout as well.

Use the **Copper mix** to blend the transition area on the spout. Add a bit of the **Warm Brown mix** to the pot and front edge of the lid.

Deepen and refine the shadow at the front edge of the pot with the **Dark Copper mix**. Rinse the brush.

Dry the surface before continuing to the next step.

STEP 8 PHOTO



If you did not understand any part of this step you can ask in the comment section of this video and I will do my best to answer

Step 9 - Teapot Shine

Timestamp 43:17

“Metallic”

PAINT

- Cadmium Yellow Medium = **CYM**
- Mars Black = **MB**
- Titanium White = **TW**
- Yellow Ochre = **YO**

BRUSHES & TOOLS

- Medium Synthetic Angle

COLOR MIXES

- Bright Copper = **CY > (YO > MB)**
- Light Yellow = **CYM > TW**

STEP DISCUSSION

Use the **Bright Copper mix** to tap a bright highlight onto the belly of the pot. There is also a concentrated highlight at the curve of the spout, the front of the lid and on the handle.

Use the toe of the brush to apply the **Light Yellow mix** to create hot spots of light, showing the roundness of the pot, the curve of the spout and lid, and the handle curves. Rinse the brush.

Dry the surface before continuing to the next step.

STEP 9 PHOTO



If you did not understand any part of this step you can ask in the comment section of this video and I will do my best to answer.

Step 10 - Shadows

Timestamp 47:35

“Ambiance”

PAINT

- Ultramarine Blue = **UB**
- Mars Black = **MB**
- Golden's Acrylic Satin Glazing Liquid = **ASL**

BRUSHES & TOOLS

- Medium Synthetic Angle
- Large Synthetic Round Blender

COLOR MIXES

- Paynes Grey = **MB + UB**

STEP DISCUSSION

Deepen the shadows where the back of the pot and table meet, using Satin Glazing Liquid and a little **Paynes Grey mix**. Use a dry Blender brush to diffuse it outward. Also glaze a deeper shadow around the bottom of the teapot. Rinse the brush.

Dry the surface before continuing to the next step.

STEP 10 PHOTO



If you did not understand any part of this step you can ask in the comment section of this video and I will do my best to answer.

Step 11 - Baby's Breath

Timestamp 49:33
"Fairly Dense"

PAINT

- Cadmium Yellow Medium = **CYM**
- Burnt Sienna = **BS**
- Titanium White = **TW**
- Yellow Ochre = **YO**

BRUSHES & TOOLS

- Medium Hog Round

COLOR MIXES

- Muted Gold = **CY + YO > BS > TW**

STEP DISCUSSION

Tap tiny puffs of Baby's Breath flowers in the bottom right corner of the canvas, using the **Muted Gold mix**. Create various sizes of these flowers, packed fairly densely to fill in this space. Layer a few over the teapot handle and base. Reset the brush as needed by rinsing and squeezing out the access water.

Dry the surface before continuing to the next step.

STEP 11 PHOTO



If you did not understand any part of this step you can ask in the comment section of this video and I will do my best to answer.

Step 12 - Finishing Touches

Timestamp 54:21
“Delicate Details”

PAINT

- Cadmium Red Medium = **CRM**
- Cadmium Yellow Medium = **CYM**
- Burnt Sienna = **BS**
- Mars Black = **MB**
- Titanium White = **TW**
- Yellow Ochre = **YO**
- Fluid White Paint = **FWP**
- Golden's Acrylic Satin Glazing Liquid = **ASL**

BRUSHES & TOOLS

- X-Small Synthetic Round
- Small Synthetic Filbert Grainer
- Medium Round Hog

COLOR MIXES

- Dark Copper = **CY > CR + YO + MB**
- Off White = **TW + (CY + YO > BS)**

STEP DISCUSSION

Start with the **Dark Copper mix** and some Satin Glazing Liquid on the Filbert Grainer, and glaze this over the bright highlight near the top of the spout, to tone it back slightly. Rinse the brush.

Switch to the Hog Round brush and highlight the top of the flowers with the **Off White mix**. Rinse the brush.

Paint the tiny flower stems in various directions using the **Off White mix** and Fluid White Paint with the X-Small Round brush. Rinse the brush.

Use the Satin Glazing Liquid with some **Dark Copper mix**, and glaze a shadow under the flowers to anchor them down onto the table.

Sign.

STEP 12 PHOTO



If you did not understand any part of this step you can ask in the comment section of this video and I will do my best to answer.

Traceable

