

The Art Sherpa Presents
Acrylic August-Day 30
Abstract Floral

Aurora Flower

Name credit to Patron: Georgia Wallace



12 Steps

Difficulty: Intermediate - 2 Hoot 🦉🦉

Copyright © The Art Sherpa LLC, 2024. All Rights Reserved.

The content of this chapter, created and published by Cinnamon Cooney of The Art Sherpa LLC, is protected under international copyright laws. This material, including but not limited to text, images, paintings, and instructional content, is solely provided for the personal use of students for learning purposes.

No part of this material may be reproduced, distributed, displayed, transmitted, or otherwise used without the prior written permission of Cinnamon Cooney of The Art Sherpa LLC. This prohibition extends to both commercial and non-commercial uses. Any unauthorized use may infringe upon the intellectual property rights of The Art Sherpa LLC and could be subject to legal penalties.

By accessing, reading, or otherwise using this material, you, the student, agree to respect the intellectual property rights of The Art Sherpa LLC, and understand that this material is for your personal use and learning only.

It is your responsibility to understand and comply with all applicable local, state, national, and international laws when using this copyrighted material. All rights related to distribution, including the text and imagery within this work, are retained by Cinnamon Cooney, The Art Sherpa LLC.

For permission requests or inquiries, please contact The Art Sherpa LLC at support@theartsherpa.com.

Use policy

Student Use Policy of The Art Sherpa LLC

Personal Use: Students are allowed to print out the material provided by The Art Sherpa LLC for personal, at-home use. This includes studying and practicing techniques as presented in the material.

Private Parties: Students are permitted to make copies of the material for private parties, provided no money is exchanged in relation to the provision or use of the material. The use of the material is only for the purpose of facilitating the personal enjoyment and learning of painting within the confines of the private party.

Charitable Organizations: Libraries, educational institutions, and other non-profit organizations that exist to serve the community may request permission to print copies of the material for use in their efforts to help others. Such permission must be obtained directly from The Art Sherpa LLC at support@theartsherpa.com.

Painting Parties for Profit: If a student, individual, or business wishes to use the material for painting parties or events where profit is involved, a license must be purchased from The Art Sherpa LLC. This license allows the distribution of the material for the single business or single party only. It does not permit publication of the material in any other way, form, or through any other medium.

Any use of the material not expressly permitted in this Student Use Policy may infringe upon the intellectual property rights of The Art Sherpa LLC and could be subject to legal penalties

FOLLOW THE ART SHERPA

WEBSITE: <https://theartsherpa.com/>

FACEBOOK: <https://www.facebook.com/TheArtSherpa/>

INSTAGRAM: <https://www.instagram.com/theartsherpa>

PINTEREST: <https://www.pinterest.com/cinnamoncooney/>



#THEARTSHERPA
#STEPBYSTEPPAINTING
#ACRYLICPAINTING

ABOUT THE ART SHERPA:

Artwork and video is the sole property of The Art Sherpa™ and intended for the students personal education and Enjoyment. For questions regarding using any Art Sherpa painting in a commercial setting labs@theartsherpa.com for all other questions support@theartsherpa.com Read our full disclosure here that covers partnerships and affiliate links <http://bit.ly/affiliatedisclosureTAS>

TABLE OF CONTENTS

PAINT AND TOOL GUIDE	5
Video Chapter Guide	6
Step 1 - Multicolor Ground	7
STEP 1 PHOTO	8
Step 2 - Abstract Background	9
STEP 2 PHOTO	10
Step 3 - Keyhole Of Light	11
STEP 3 PHOTO	12
Step 4 - Purple Spikes	13
STEP 4 PHOTO	14
Step 5 - Spike Details	15
STEP 5 PHOTO	16
Step 6 - Mid Ground Color	17
STEP 6 PHOTO	18
Step 7 - Twigs	19
STEP 7 PHOTO	20
Step 8 - Leaves	21
STEP 8 PHOTO	22
Step 9 - Pink Poppies	23
STEP 9 PHOTO	24
Step 10 - Layered Values	25
STEP 10 PHOTO	26
Step 11 - Flower Details	27
STEP 11 PHOTO	28
Step 12 - Finishing Touches	29
STEP 12 PHOTO	30
Traceable	31

PAINT AND TOOL GUIDE

Use this paint legend below to understand the symbols that I use to give you important painting information.

PAINT

- Cadmium Red Medium = **CRM**
- Quinacridone Magenta = **QM**
- Cadmium Yellow Medium = **CYM**
- Phthalo Blue = **PB**
- Ultramarine Blue = **UB**
- Phthalo Green = **PG**
- Dioxazine Purple = **DP**
- Mars Black = **MB**
- Titanium White = **TW**
- Fluid White Paint = **FWP**
- Golden's Acrylic Satin Glazing Liquid = **ASL**

BRUSHES & TOOLS

- X-Small Synthetic Round
- Small Synthetic Round
- Large Synthetic Oval Mop

TOOLS

- 8x8 Canvas (If you notice that your canvas started to warp, as sometimes happens, just turn the canvas over and put it back side forward on your easel, then mist the back of the canvas. It usually resolves itself. Let it dry before you proceed.)
- Optional: Sta-Wet Palette

SYMBOL GUIDE

- > Less than previous amount
- < More than previous amount
- + Equal amount

Techniques You Will Use In This Painting

- Color Theory
- Expressive Painting Strokes
- Being Painterly and Loose
- Atmospheric Perspective
- Finding Value
- Directionality
- Blending Wet into Wet
- Color Mixing

Video Chapter Guide

Below are the timestamps we inserted in the tutorial video so that you can easily coordinate using the book and the tutorial video simultaneously.

Intro	00:00	
Step 1	02:39	Multicolor Ground
Step 2	06:29	Abstract Background
Step 3	11:05	Keyhole Of Light
Step 4	15:31	Purple Spikes
Step 5	19:07	Spike Details
Step 6	21:31	Midground Colors
Step 7	23:11	Twigs
Step 8	26:56	Leaves
Step 9	31:09	Pink Poppies
Step 10	33:34	Layered Values
Step 11	35:48	Flower Details
Step 12	43:23	Finishing Touches
	46:58	Sign

Step 1 - Multicolor Ground

Timestamp 2:39

“Drama”

PAINT

- Quinacridone Magenta = **QM**
- Cadmium Yellow Medium = **CYM**
- Phthalo Blue = **PB**
- Phthalo Green = **PG**
- Titanium White = **TW**
- Golden's Acrylic Satin Glazing Liquid = **ASL**

BRUSHES & TOOLS

- Large Synthetic Oval Mop

COLOR MIXES

- Pastel Yellow = **CYM + TW**
- Light Turquoise = **PB + PG + TW**

STEP DISCUSSION

Load your brush with Glazing Liquid and the **Pastel Yellow mix**. Roughly cover the upper middle left of the canvas, using long up and down strokes, moving quickly to achieve a wet into wet effect. Without rinsing add Quinacridone Magenta and paint the upper left side, vertically. Rinse the brush.

Load Glazing Liquid and Titanium White, and brush the pink area down from the top, wet into wet. Wipe the brush off on a towel, and blend the yellow area, moving fairly quickly to get these transitions.

Add Glazing Liquid to the **Light Turquoise mix**, and brush that onto the right side of the canvas. Blend it into the yellow area slightly, then around and under that yellow to about the halfway point on the canvas. Add more Glazing Liquid and Phthalo Blue to the brush and paint the remaining lower left side of the canvas, then blend it up into the pink area and across the bottom. Your strokes should remain vertical throughout, while continually applying the wet into wet method. Rinse the brush.

Apply Cadmium Yellow Medium in the center of the canvas, brushing downward into the turquoise. Rinse the brush.

While everything is still wet, use a dry brush and lightly dust the canvas using quick up and down strokes to soften the blend. Rinse the brush.

Dry the surface before continuing to the next step.

STEP 1 PHOTO



If you did not understand any part of this step you can ask in the comment section of this video and I will do my best to answer.

Step 2 - Abstract Background

Timestamp 6:29
“Complexiety”

PAINT

- Cadmium Red Medium = **CRM**
- Quinacridone Magenta = **QM**
- Cadmium Yellow Medium = **CYM**
- Phthalo Blue = **PB**
- Phthalo Green = **PG**
- Dioxazine Purple = **DP**
- Titanium White = **TW**
- Golden's Acrylic Satin Glazing Liquid = **ASL**

BRUSHES & TOOLS

- Large Synthetic Oval Mop

COLOR MIXES

- Pastel Yellow = **CYM + TW**
- Orange = **CRM + CYM**
- Pink = **TW + QM**
- Deep Indigo = **PB + DP**
- Light Purple = **TW > DP**
- Light Turquoise = **PB + PG + TW**

STEP DISCUSSION

Load your brush with Glazing Liquid and the **Pastel Yellow mix**, and blend it back into the center of the canvas. Add a stroke of this down as well, and feathered out at the bottom. Add a couple little spots of the **Orange mix** coming down and across the middle of the canvas and to the left. Rinse the brush.

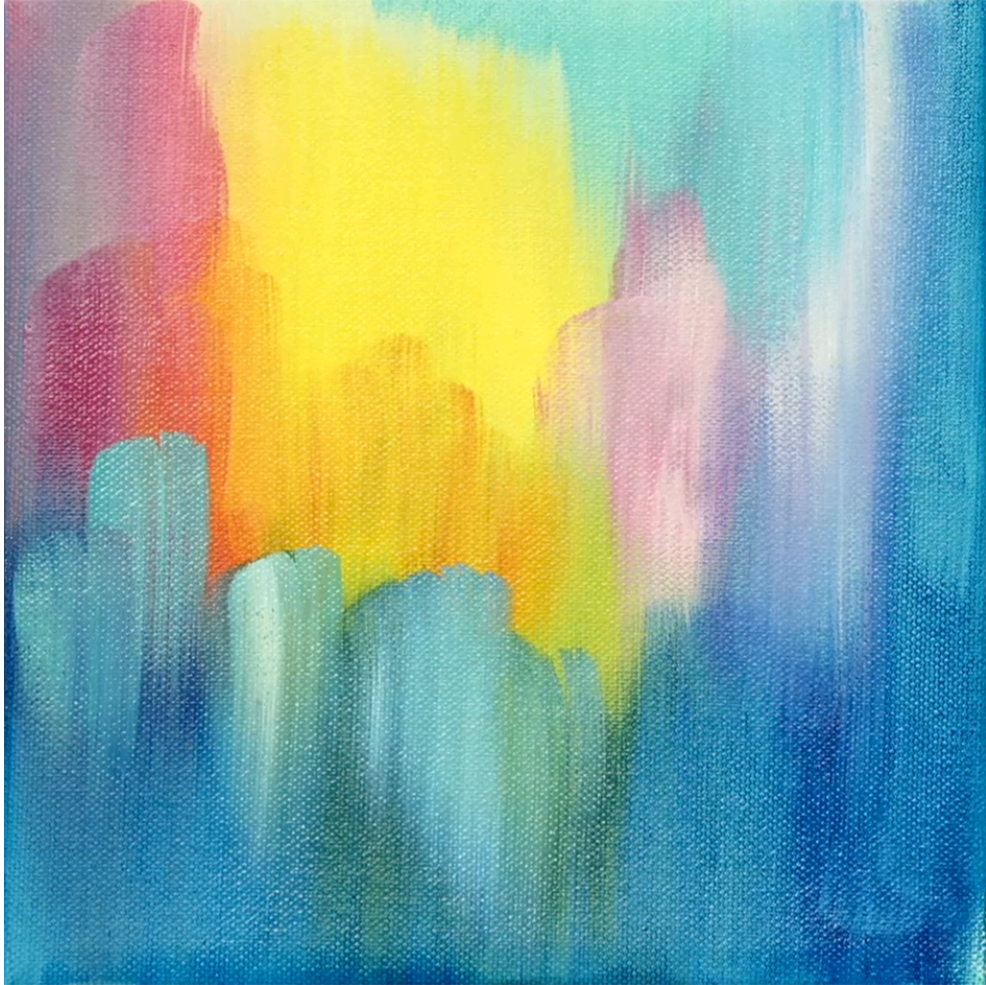
Add Glazing Liquid to the **Pink mix** and brush a couple short downward strokes on either side of the yellow area. Blend a little more Titanium White to vary the colors. Occasionally brush upward to create feathering on both sides of the color. Without rinsing, blend a little more Titanium White into the pink area on the right. Rinse the brush.

Darken the right side and across the lower canvas with the **Deep Indigo mix** and a little Glazing Liquid. Then feather the strokes upward. Rinse the brush.

Paint some of the **Light Purple mix** on the right side, between the blue and the pink. Without rinsing add Titanium White closer to the top of this area. Rinse the brush. Apply some of the **Light Turquoise mix** at the top and then, add a few quick staggered strokes of it in the mid left side. Mix in a little Titanium White to add some variance. Add a couple staggered strokes of this color in the bottom center as well. Rinse the brush.

Dry the surface before continuing to the next step.

STEP 2 PHOTO



If you did not understand any part of this step you can ask in the comment section of this video and I will do my best to answer.

Step 3 - Keyhole Of Light

Timestamp 11:05
“Travelling Colors”

PAINT

- Cadmium Red Medium = **CRM**
- Cadmium Yellow Medium = **CYM**
- Phthalo Blue = **PB**
- Phthalo Green = **PG**
- Dioxazine Purple = **DP**
- Titanium White = **TW**
- Golden's Acrylic Satin Glazing Liquid = **ASL**

BRUSHES & TOOLS

- Large Synthetic Oval Mop

COLOR MIXES

- Orange = **CRM + CYM**
- Yellow White = **TW > CYM**
- Deep Indigo = **PB + DP**
- Light Turquoise = **PB + PG + TW**

STEP DISCUSSION

Layer a few strokes of the **Orange mix** over the center of the canvas, allowing the blue below to show through as it feathers out. Then, add a bit of this color in the upper right canvas. Rinse the brush.

Load Glazing Liquid and the **Yellow White mix** onto the brush and lighten the yellow that is at the top of the canvas. Add in more Cadmium Yellow Medium as you near the center, creating a keyhole of light. Rinse the brush.

Darken the right side and across the lower canvas with the **Deep Indigo mix** and a little Glazing Liquid. Then feather the strokes upward. Rinse the brush. While everything is still wet, use a dry brush and lightly dust the canvas using quick up and down strokes to soften the blend. Wiping off on the towel as needed. Apply short, horizontal brush strokes with the **Deep Indigo mix** in the lower center-right, using the brush corner to create irregular shapes. Rinse the brush.

Refine the blue green marks on the bottom left, and bottom center using the **Turquoise mix**, allowing them to feather out at the bottom. Rinse the brush.

Dry the surface before continuing to the next step.

STEP 3 PHOTO



If you did not understand any part of this step you can ask in the comment section of this video and I will do my best to answer.

Step 4 - Purple Spikes

Timestamp 15:31
“The Dark Base

PAINT

- Phthalo Blue = **PB**
- Dioxazine Purple = **DP**

BRUSHES & TOOLS

- Small Synthetic Round

COLOR MIXES

- Deep Indigo = **PB + DP**

STEP DISCUSSION

Paint the first spike flower just right of center using the **Deep Indigo mix**. Begin the smallest part of the flower near the top of the canvas, applying tiny marks that go down the flower in a zipper like fashion. The flower gets thicker as it goes down with the widest part ending just above the mid canvas point. Paint a stem coming from it and disappearing into the dark background. Paint a bit of foliage coming off the stem and angling upward.

Add another slightly smaller flower to the left of that first one, give this one a little bend and add the foliage. Then, add a third flower to the left that bends even more and is even lower on the canvas. Remember to add more foliage. Rinse the brush.

Dry the surface before continuing to the next step.

STEP 4 PHOTO



If you did not understand any part of this step you can ask in the comment section of this video and I will do my best to answer.

Step 5 - Spike Details

Timestamp 19:07
“Dimensionality”

PAINT

- Quinacridone Magenta = **QM**
- Ultramarine Blue = **UB**
- Titanium White = **TW**

BRUSHES & TOOLS

- Small Synthetic Round

COLOR MIXES

- Merlot = **UB + QM > TW**
- Lavender = **TW > QM > (Merlot)**

STEP DISCUSSION

Add touches of the **Merlot mix** on the left side of the flowers. This will be dark but it will add dimensionality. Paint a mid value on most of the individual florets by adding more Titanium White to the mix. Then highlight these florets, with the **Lavender mix**, focusing mostly on the left side. Rinse the brush.

Dry the surface before continuing to the next step.

STEP 5 PHOTO



If you did not understand any part of this step you can ask in the comment section of this video and I will do my best to answer.

Step 6 - Mid Ground Color

Timestamp 21:31
“Creating Light”

PAINT

- Cadmium Red Medium = **CRM**
- Cadmium Yellow Medium = **CYM**
- Phthalo Blue = **PB**
- Phthalo Green = **PG**
- Titanium White = **TW**
- Golden's Acrylic Satin Glazing Liquid = **ASL**

BRUSHES & TOOLS

- Large Synthetic Oval Mop

COLOR MIXES

- Light Turquoise = **PB + PG + TW**
- Yellow Orange = **CYM > CRM**

STEP DISCUSSION

Add a bit of Glazing Liquid to the Turquoise mix and brush down individual strokes through the bottom center of the canvas. Stagger a few of them here using a light touch and allow them to feather out lightly. Rinse the brush.

Add a few short strokes of the **Yellow Orange mix** mid canvas, just to the right of center. Then touch a little of this color onto the background, to the right of the tallest spike. Rinse the brush.

Dry the surface before continuing to the next step.

STEP 6 PHOTO



If you did not understand any part of this step you can ask in the comment section of this video and I will do my best to answer

Step 7 - Twigs

Timestamp 23:11

“Twiggly Botanical Bits“

PAINT

- Mars Black = **MB**

BRUSHES & TOOLS

- Small Synthetic Round

COLOR MIXES

STEP DISCUSSION

Thin Mars Black with a little water and use a light load on the toe of the brush to paint in thin twiggly branches. Find the space and location you want these branches to occupy then fill them in with tiny twigs coming from them. Use the image that follows this step to guide you with the branch locations. Rinse the brush.

Dry the surface before continuing to the next step.

STEP 7 PHOTO



If you did not understand any part of this step you can ask in the comment section of this video and I will do my best to answer.

Step 8 - Leaves

Timestamp 26:56

“Implied Sprigs Of Greenery”

PAINT

- Cadmium Yellow Medium = **CYM**
- Phthalo Blue = **PB**
- Phthalo Green = **PG**
- Fluid White Paint = **FWP**

BRUSHES & TOOLS

- Small Synthetic Round

COLOR MIXES

- Vintage Green = **CYM + PB + PG**

STEP DISCUSSION

Tint the Fluid White Paint with a little of the **Vintage Green mix**. Begin painting the leaf structures onto the twigs. These light leaves should pop against the background with the most dramatic contrast being where the canvas is darkest. Rinse the brush.

Dry the surface before continuing to the next step.

STEP 8 PHOTO



If you did not understand any part of this step you can ask in the comment section of this video
and I will do my best to answer

Step 9 - Pink Poppies

Timestamp 31:09

“Pop In The Poppies”

PAINT

- Quinacridone Magenta = **QM**
- Titanium White = **TW**

BRUSHES & TOOLS

- Small Synthetic Round

COLOR MIXES

- Pink = **TW + QM**

STEP DISCUSSION

Place the four open poppies to form an elongated triangular shape. Use the **Pink mix** and paint individual petals to create these four poppies. It is ok if the paint value varies. Then add a few closed buds peeking out in the bottom right of the canvas. Rinse the brush.

Dry the surface before continuing to the next step.

STEP 9 PHOTO



If you did not understand any part of this step you can ask in the comment section of this video and I will do my best to answer.

Step 10 - Layered Values

Timestamp 33:34

“Poppin In The Pink”

PAINT

- Quinacridone Magenta = **QM**
- Titanium White = **TW**

BRUSHES & TOOLS

- Small Synthetic Round

COLOR MIXES

- Pink = **TW + QM**

STEP DISCUSSION

Use Quinacridone Magenta to add a brighter pop of pink onto a petal on the flower on the left. Then, without rinsing, load Titanium White onto the brush and allow the colors to roughly mix right on the canvas as you paint the next petal. Paint the next petal with the **Pink mix**. Add more Titanium white and paint the last petal. Turning your canvas if needed for ease of application.

Paint the remaining flowers in a similar fashion, while keeping in mind that they are facing different directions, so the petals will have different shapes and placements to reflect that. Use the image that follows as a guide. Rinse the brush.

Dry the surface before continuing to the next step.

STEP 10 PHOTO



If you did not understand any part of this step you can ask in the comment section of this video and I will do my best to answer.

Step 11 - Flower Details

Timestamp 35:48

“Highlights“

PAINT

- Cadmium Red Medium = **CRM**
- Quinacridone Magenta = **QM**
- Cadmium Yellow Medium = **CYM**
- Mars Black = **MB**
- Titanium White = **TW**
- Fluid White Paint = **FWP**

BRUSHES & TOOLS

- X-Small Synthetic Round
- Small Synthetic Round

COLOR MIXES

- Orange = **CRM + CYM**

STEP DISCUSSION

Use the Small brush to paint the flower centers by tapping in some Mars Black. Rinse the brush. Paint the forward petal of the top flower using Quinacridone Magenta. It is ok if a little Titanium White gets in there but you want it to be a darker value. This petal is shaped sorta like a parenthesis because it is a little folded. Add another folded petal to the flower on the right. Rinse the brush.

Switch to the X-Small brush loaded with Fluid White paint and carefully white line the edges of each individual flower petals. If your darker petals are still wet and accidentally get smudged, repaint them and quickly dry the surface before continuing the white lining. Add a few detail lines within the petals to give them shape. Turn your canvas as needed for comfort. Remember to add these highlight edges to the small buds. Rinse the brush.

Tap highlights on the flower centers with some of the **Orange mix**. Rinse the brush.

Dry the surface before continuing to the next step.

STEP 11 PHOTO



If you did not understand any part of this step you can ask in the comment section of this video and I will do my best to answer.

Step 12 - Finishing Touches

Timestamp 43:23

“Shadowy Dimensions”

PAINT

- Quinacridone Magenta = **QM**
- Cadmium Yellow Medium = **CYM**
- Fluid White Paint = **FWP**
- Golden's Acrylic Satin Glazing Liquid = **ASL**

BRUSHES & TOOLS

- X-Small Synthetic Round

COLOR MIXES

- Bright Yellow = **FWP + CYM**

STEP DISCUSSION

Add Glazing Liquid to some Quinacridone Magenta and carefully refine and separate the edges of the petals. Keep in mind that this is more of a shadow so the white lining will remain as a highlight. Add fine lines of this shadow color around the flower centers as well. Rinse the brush.

Pop in a final highlight onto the flower centers with the **Bright Yellow mix**. Rinse the brush.

Sign.

STEP 12 PHOTO



If you did not understand any part of this step you can ask in the comment section of this video and I will do my best to answer.

Traceable

