

The Art Sherpa Presents

13 Days - Day 1

Witch's Boot

Witches Boot'quet

Name credit to Patron: Christy Lev / Gwen Savoy



14 Steps

Difficulty: Intermediate - 2 Hoot 🦉🦉

Copyright © The Art Sherpa LLC, 2024. All Rights Reserved.

The content of this chapter, created and published by Cinnamon Cooney of The Art Sherpa LLC, is protected under international copyright laws. This material, including but not limited to text, images, paintings, and instructional content, is solely provided for the personal use of students for learning purposes.

No part of this material may be reproduced, distributed, displayed, transmitted, or otherwise used without the prior written permission of Cinnamon Cooney of The Art Sherpa LLC. This prohibition extends to both commercial and non-commercial uses. Any unauthorized use may infringe upon the intellectual property rights of The Art Sherpa LLC and could be subject to legal penalties.

By accessing, reading, or otherwise using this material, you, the student, agree to respect the intellectual property rights of The Art Sherpa LLC, and understand that this material is for your personal use and learning only.

It is your responsibility to understand and comply with all applicable local, state, national, and international laws when using this copyrighted material. All rights related to distribution, including the text and imagery within this work, are retained by Cinnamon Cooney, The Art Sherpa LLC.

For permission requests or inquiries, please contact The Art Sherpa LLC at support@theartsherpa.com.

Use policy

Student Use Policy of The Art Sherpa LLC

Personal Use: Students are allowed to print out the material provided by The Art Sherpa LLC for personal, at-home use. This includes studying and practicing techniques as presented in the material.

Private Parties: Students are permitted to make copies of the material for private parties, provided no money is exchanged in relation to the provision or use of the material. The use of the material is only for the purpose of facilitating the personal enjoyment and learning of painting within the confines of the private party.

Charitable Organizations: Libraries, educational institutions, and other non-profit organizations that exist to serve the community may request permission to print copies of the material for use in their efforts to help others. Such permission must be obtained directly from The Art Sherpa LLC at support@theartsherpa.com.

Painting Parties for Profit: If a student, individual, or business wishes to use the material for painting parties or events where profit is involved, a license must be purchased from The Art Sherpa LLC. This license allows the distribution of the material for the single business or single party only. It does not permit publication of the material in any other way, form, or through any other medium.

Any use of the material not expressly permitted in this Student Use Policy may infringe upon the intellectual property rights of The Art Sherpa LLC and could be subject to legal penalties

FOLLOW THE ART SHERPA

WEBSITE: <https://theartsherpa.com/>

FACEBOOK: <https://www.facebook.com/TheArtSherpa/>

INSTAGRAM: <https://www.instagram.com/theartsherpa>

PINTEREST: <https://www.pinterest.com/cinnamoncooney/>



#THEARTSHERPA
#STEPBYSTEPPAINTING
#ACRYLICPAINTING

ABOUT THE ART SHERPA:

Artwork and video is the sole property of The Art Sherpa™ and intended for the students personal education and Enjoyment. For questions regarding using any Art Sherpa painting in a commercial setting labs@theartsherpa.com for all other questions support@theartsherpa.com Read our full disclosure here that covers partnerships and affiliate links <http://bit.ly/affiliatedisclosureTAS>

TABLE OF CONTENTS

PAINT AND TOOL GUIDE	5
Video Chapter Guide	6
Step 1 - Colored Ground	7
STEP 1 PHOTO	8
Step 2 - Sketch	9
STEP 2 PHOTO	10
Step 3 - First Shoe Layer	11
STEP 3 PHOTO	12
Step 4 - Tan Tones	13
STEP 4 PHOTO	14
Step 5 - Laces	15
STEP 5 PHOTO	16
Step 6 - First Flowers	17
STEP 6 PHOTO	18
Step 7 - Orange Flowers	19
STEP 7 PHOTO	20
Step 8 - Orange Flower Shading	21
STEP 8 PHOTO	22
Step 9 - Flower Highlights	23
STEP 9 PHOTO	24
Step 10 - Starting Daisies	25
STEP 10 PHOTO	26
Step 11 - Finishing Flowers	27
STEP 11 PHOTO	28
Step 12 - Painting Surface	29
STEP 12 PHOTO	30
Step 13 - Foliage	31
STEP 13 PHOTO	32
Step 14 - Cleaning Up	33
STEP 14 PHOTO	34
Traceable	35

PAINT AND TOOL GUIDE

Use this paint legend below to understand the symbols that I use to give you important painting information.

PAINT

- Cadmium Red Medium = **CRM**
- Quinacridone Magenta = **QM**
- Cadmium Yellow Medium = **CYM**
- Ultramarine Blue = **UB**
- Phthalo Green = **PG**
- Burnt Sienna = **BS**
- Dioxazine Purple = **DP**
- Mars Black = **MB**
- Titanium White = **TW**

BRUSHES & TOOLS

- Large Synthetic Oval Mop
- Medium Synthetic Angle
- Medium Synthetic Round
- Small Synthetic Angle

TOOLS

- T-Square Ruler
- Chalk Pencil or Watercolor Pencil
- 11x14 Canvas (If you notice that your canvas started to warp, as sometimes happens, just turn the canvas over and put it back side forward on your easel, then mist the back of the canvas. It usually resolves itself. Let it dry before you proceed.)
- Optional: Sta-Wet Palette

SYMBOL GUIDE

- > Less than previous amount
- < More than previous amount
- + Equal amount

Techniques You May Use In This Painting

- Color Theory
- Implying Foliage
- Expressive Painting Strokes
- Being Painterly and Loose
- Finding Value
- Dry Brushing
- Directionality
- Blending Wet into Wet
- Color Mixing

Video Chapter Guide

Below are the timestamps we inserted in the tutorial video so that you can easily coordinate using the book and the tutorial video simultaneously.

Intro	00:00	
Step 1	2:23	Colored Ground
Step 2	5:20	Sketch
Step 3	11:41	First Shoe Layer
Step 4	17:35	Tan Tones
Step 5	22:10	Laces
Step 6	27:00	First Flowers
Step 7	31:52	Orange Flowers
Step 8	36:42	Orange Flower Shading
Step 9	39:29	Flower Highlights
Step 10	42:00	Starting Daisies
Step 11	44:40	Finishing Flowers
Step 12	52:38	Painting Surface
Step 13	56:00	Foliage
Step 14	1:04:49	Cleaning Up
	1:05:49	Sign

Step 1 - Colored Ground

Timestamp 2:23
“Back, In Black”

PAINT

- Mars Black = **MB**

BRUSHES & TOOLS

- Large Synthetic Oval Mop

COLOR MIXES

STEP DISCUSSION

Load the brush with Mars Black, and then roughly paint the entire canvas until it is loosely covered. Smooth the paint somewhat by applying long strokes, vertically and horizontally. This helps to ensure that the canvas is completely covered. Rinse the brush.

Dry the surface before continuing to the next step.

STEP 1 PHOTO



If you did not understand any part of this step you can ask in the comment section of this video and I will do my best to answer.

Step 2 - Sketch

Timestamp 5:20
“Just Sketch’er”

PAINT

BRUSHES & TOOLS

- Chalk Tool
- T-Square Ruler

COLOR MIXES

STEP DISCUSSION

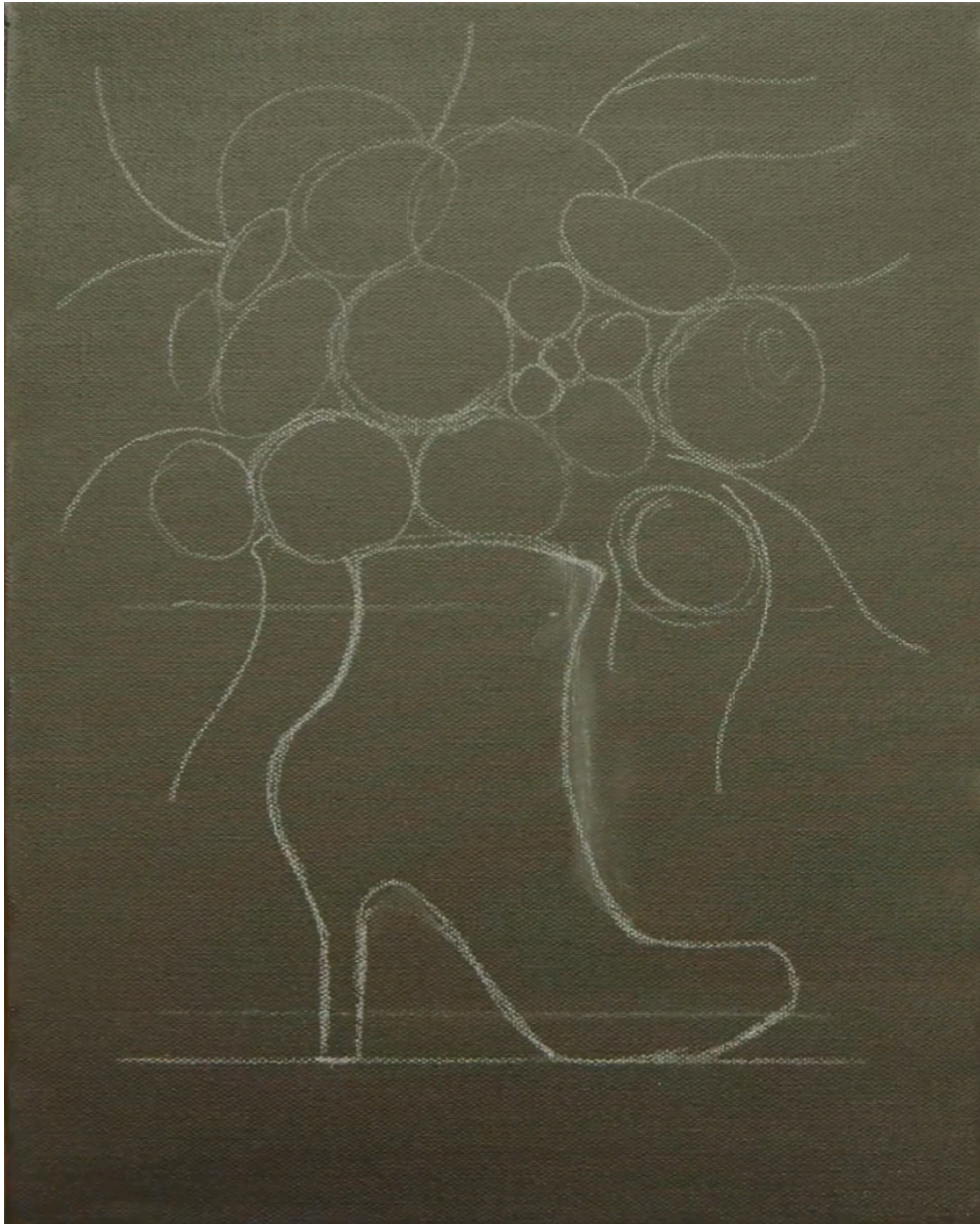
I chose to freehand this image but I have also provided a traceable if you prefer to use that method. There is no right or wrong way to get your image on the canvas. You can grid, transfer, or freehand, whatever makes you the most comfortable. If you are free handing, you have the picture that follows this step, and the traceable to assist you. I drew in only the major objects using a Chalk Pencil.

2½ inches above the bottom of the canvas, make a horizontal line straight across, stopping about two inches from each edge. Make an identical horizontal mark in the very center of the canvas. Beneath the first mark we made, make a second, slightly longer line about half an inch below it.

The boot will be facing right, with its toe curving up slightly, stopping about half an inch from the end of the guideline. The heel should be about an inch and a half tall, round out as it goes up, and meet the top of the boot about half an inch above the top guide mark. The top opening part should only be a few inches across, slightly curved to imply dimensionality. For the front of the shoe, it slopes quite steeply, until meeting the point where the toe of the shoe is.

Above the boot, make many circles to mark where flowers will go. Think of the boot like a weird vase, placing blooms and vines accordingly. I made about a dozen flowers, with vines growing out around them occasionally. The flowers here will take up most of the surface, almost reaching the top of the canvas.

STEP 2 PHOTO



If you did not understand any part of this step you can ask in the comment section of this video and I will do my best to answer.

Step 3 - First Shoe Layer

Timestamp 11:41
“Under My Boot”

PAINT

- Ultramarine Blue = **UB**
- Titanium White = **TW**
- Mars Black = **MB**

BRUSHES & TOOLS

- Medium Synthetic Angle

COLOR MIXES

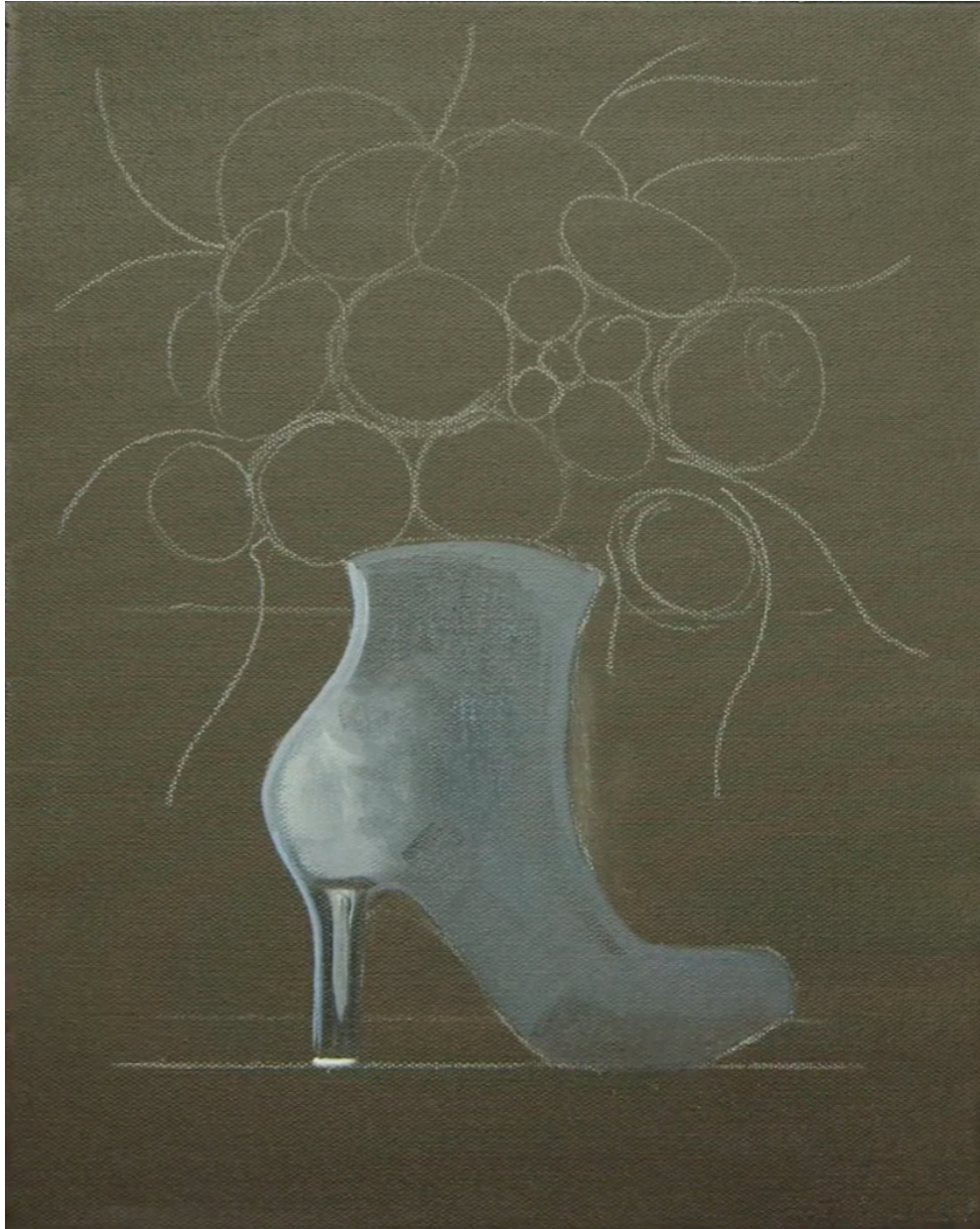
- Payne's Grey = **UB + MB > TW**

STEP DISCUSSION

With **Payne's Grey mix**, fill in the boot completely. Once the base is filled, bias the mix with Titanium White, and paint it down along the back into the heel. Highlight the heel too, and then brush the pigment around in circles around the back of the boot. Still without rinsing, add Mars Black to the brush and shade the main body of the shoe. Shade and darken the underside, and blend it into the highlight somewhat. Lastly, add Titanium White again, and re-highlight the heel and back edge of the boot once more. Rinse the brush.

Dry the surface before continuing to the next step.

STEP 3 PHOTO



If you did not understand any part of this step you can ask in the comment section of this video and I will do my best to answer.

Step 4 - Tan Tones

Timestamp 17:35

“Tanner”

PAINT

- Cadmium Yellow Medium = **CYM**
- Ultramarine Blue = **UB**
- Titanium White = **TW**
- Burnt Sienna = **BS**
- Mars Black = **MB**

BRUSHES & TOOLS

- Medium Synthetic Angle

COLOR MIXES

- Beige = **BS > CYM + TW**
- Payne's Grey = **UB + MB > TW**

STEP DISCUSSION

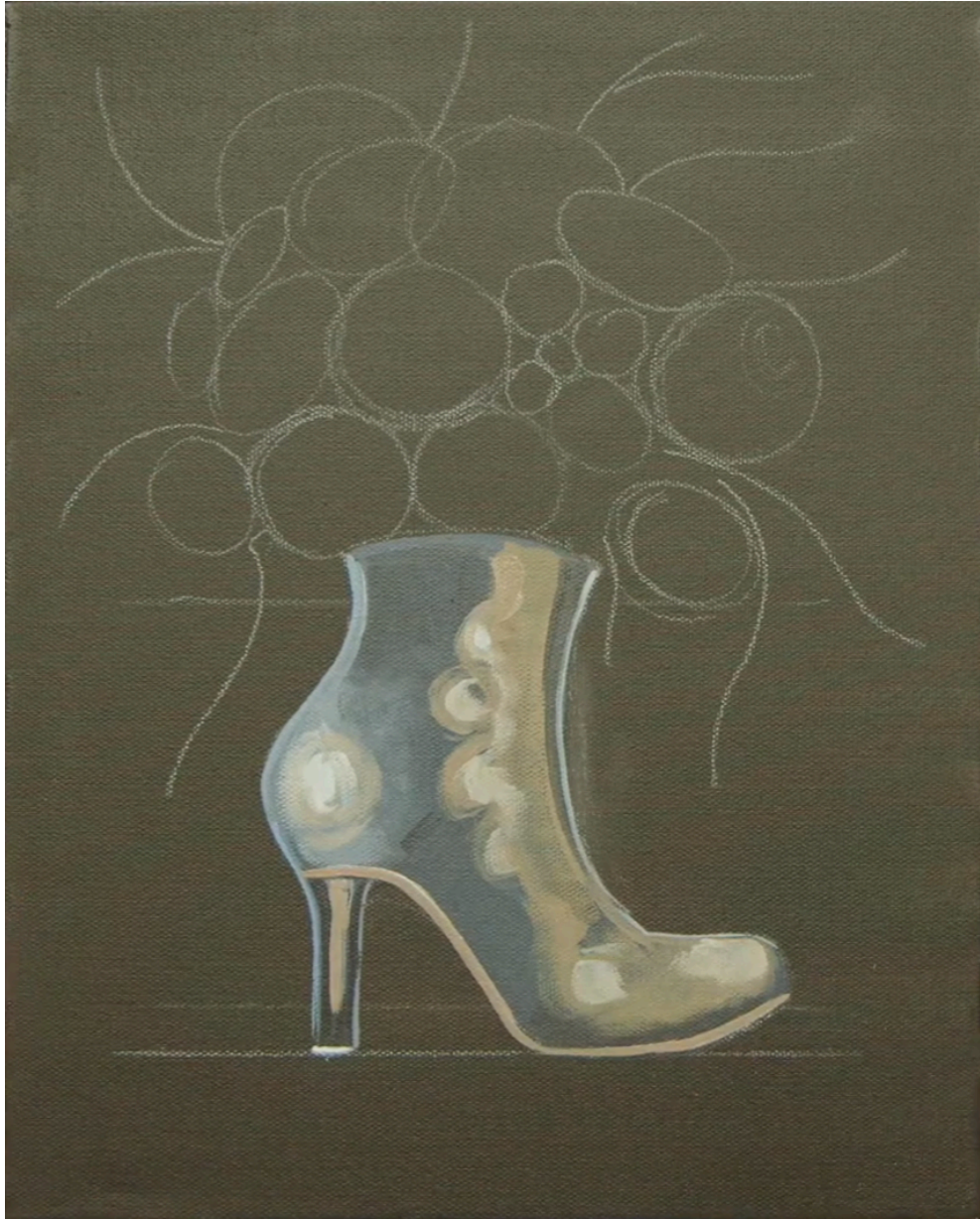
Load the brush with **Beige mix**, and then carefully line it along the bottom of the boot. Also make a line going down the heel in the middle. Then, bias the mix with Titanium White, and brush it in circles along the back of the boot, lining the heel very slightly as well. Rinse the brush.

With the same mix, dry brush it along the front of the boot, down towards and along the toe. Add little swirls where laces will go later on the front face of the shoe. Add Titanium White to the mix, and highlight the swirl areas, as well as the toe. Rinse the brush.

Bias the **Payne's Grey mix** with Mars Black, and paint it in a smallish line down the front of the shoe. Then, add Titanium White to the brush, and make a highlight outline around the front edge of the shoe. Rinse the brush.

Dry the surface before continuing to the next step.

STEP 4 PHOTO



If you did not understand any part of this step you can ask in the comment section of this video and I will do my best to answer.

Step 5 - Laces

Timestamp 22:10

“Made For Walking“

PAINT

- Ultramarine Blue = **UB**
- Burnt Sienna = **BS**
- Mars Black = **MB**
- Titanium White = **TW**

BRUSHES & TOOLS

- Medium Synthetic Round

COLOR MIXES

- Payne's Grey = **UB + MB > TW**

STEP DISCUSSION

Thin Mars Black with a drop of water, and add a hint of **Payne's Grey mix** to the dirty brush. Then make laces across the face of the shoe, connecting to the circular swirls of beige from before. You can measure these up if you would like, but freehanding is fine. The final laces should be placed right before where the toe of the boot begins, and the top of the shoe ends. Rinse the brush.

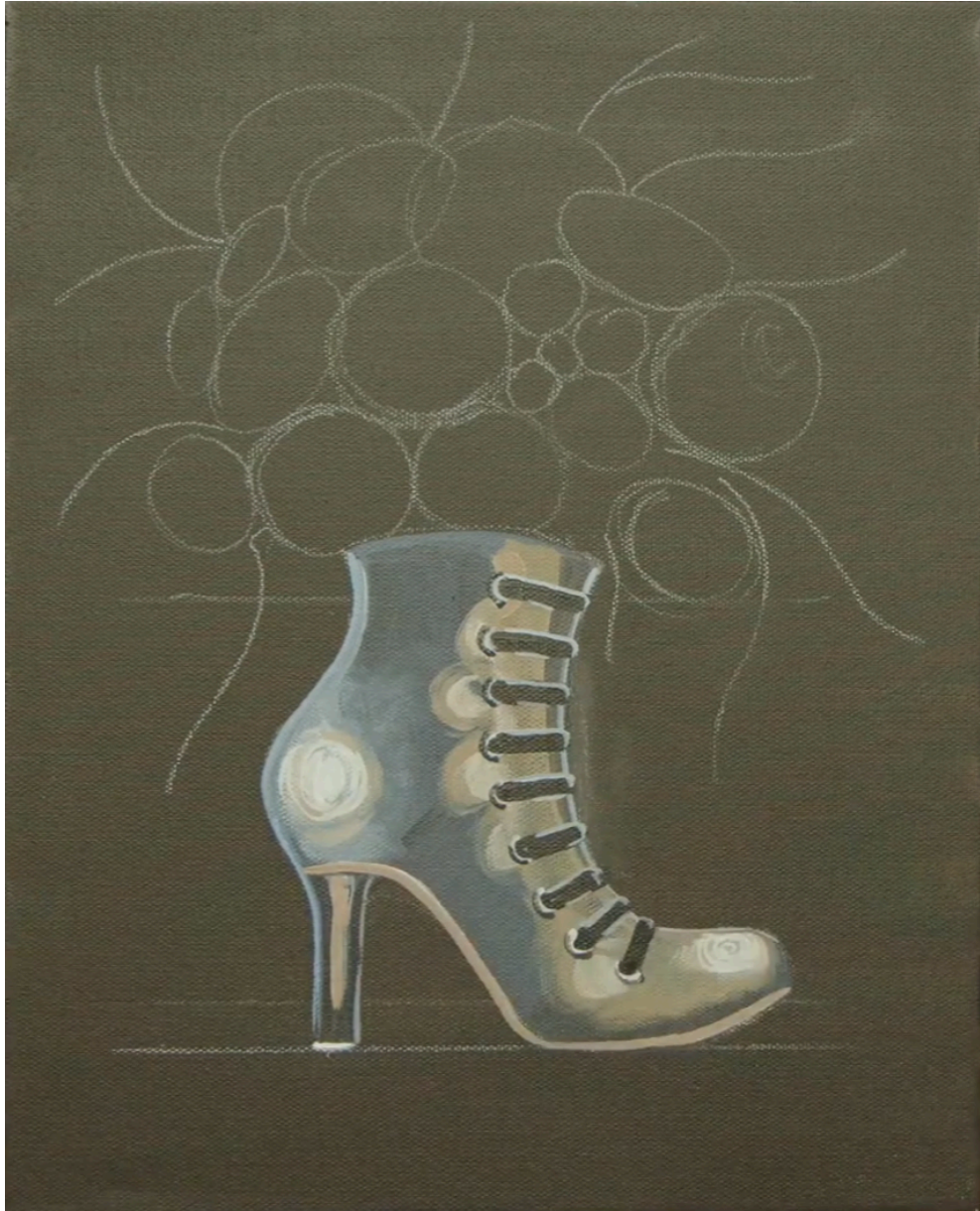
Then, thin Titanium White with water, and add a bit of **Payne's Grey mix**. Make small, silverish lace holes. Also make very thin highlight outlines along the top and bottom of each lace with the same color. Rinse the brush.

With the slightly mixed Mars Black from before, make a small shadow to the left of each grommet. Rinse the brush.

Come back with the previous Titanium White mix, and make a small circular reflection on the toe of the boot. Also briefly paint onto the existing heel reflection. Rinse the brush.

Dry the brush before continuing to the next step.

STEP 5 PHOTO



If you did not understand any part of this step you can ask in the comment section of this video and I will do my best to answer.

Step 6 - First Flowers

Timestamp 27:00

“Pretty In Pink”

PAINT

- Cadmium Red Medium = **CRM**
- Cadmium Yellow Medium = **CYM**
- Titanium White = **TW**
- Quinacridone Magenta = **QM**
- Dioxazine Purple = **DP**

BRUSHES & TOOLS

- Small Synthetic Angle

COLOR MIXES

- Lovely Magenta = **CRM + QM > DP**

STEP DISCUSSION

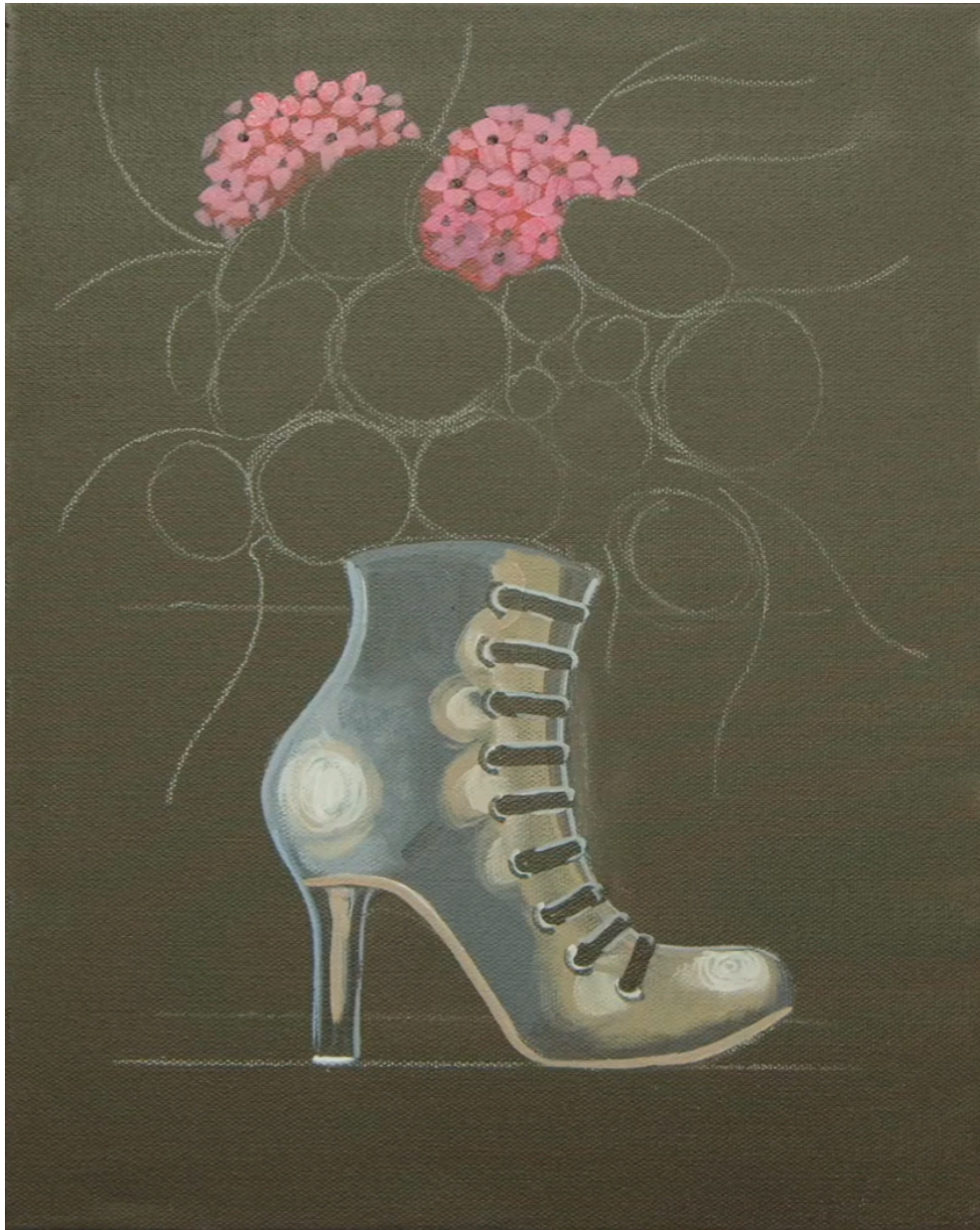
Fill in one of the middle-most flower sketches using small back-and-forth marks and **Lovely Magenta mix**. Add pure Cadmium Red Medium as you go around the perimeter. Repeat the process for another flower to the left. Add small touches of shadow with Quinacridone Magenta. Rinse the brush.

Add Titanium White to the mix, and make highlights overtop the flowers. You can also add Cadmium Yellow Medium very occasionally for added, varied warmth. Continue to use little marks, keeping some of the deeper pigment below visible, as if showing through cracks. Rinse the brush.

Now, with a bit of Dioxazine Purple, add little dark purple centers to a few of the flower petals. Rinse the brush.

Dry the surface before continuing to the next step.

STEP 6 PHOTO



If you did not understand any part of this step you can ask in the comment section of this video and I will do my best to answer

Step 7 - Orange Flowers

Timestamp 31:52
“Swirling Embers”

PAINT

- Cadmium Red Medium = **CRM**
- Cadmium Yellow Medium = **CYM**

BRUSHES & TOOLS

- Medium Synthetic Round

COLOR MIXES

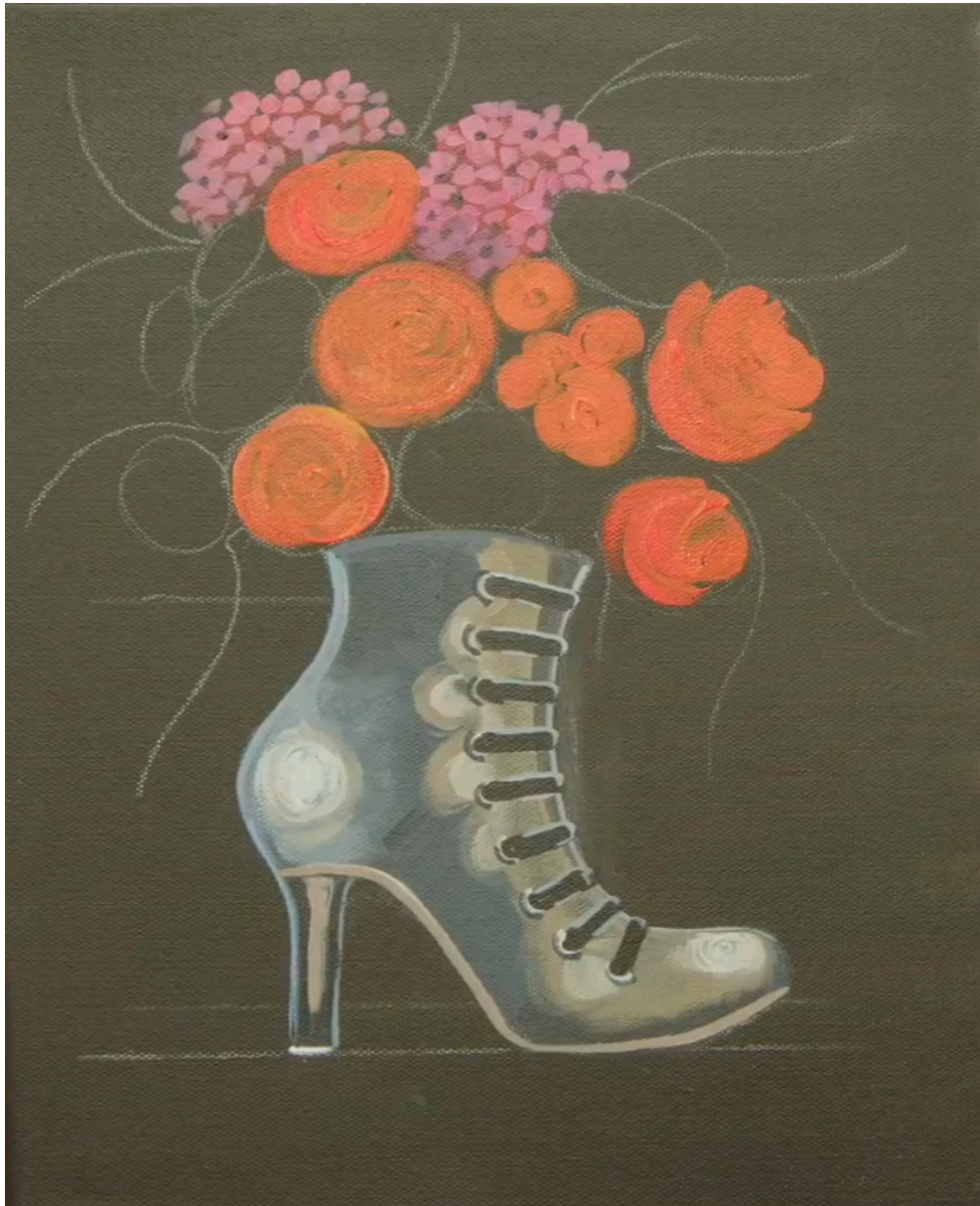
- Orange = **CRM + CYM**

STEP DISCUSSION

Begin to fill in a few smaller flower sketches with **Orange mix**, painting with small circular strokes. Fill in a few of the larger sketches as well. I painted five larger rose-shaped flowers, and five smaller ones directly below the first pink flower. Vary the mix with Cadmium Red Medium or Cadmium Yellow Medium occasionally for variance. Rinse the brush.

Dry the surface before continuing to the next step.

STEP 7 PHOTO



If you did not understand any part of this step you can ask in the comment section of this video and I will do my best to answer.

Step 8 - Orange Flower Shading

Timestamp 36:42

“Feeling Rosy”

PAINT

- Cadmium Red Medium = **CRM**
- Cadmium Yellow Medium = **CYM**

BRUSHES & TOOLS

- Medium Synthetic Round

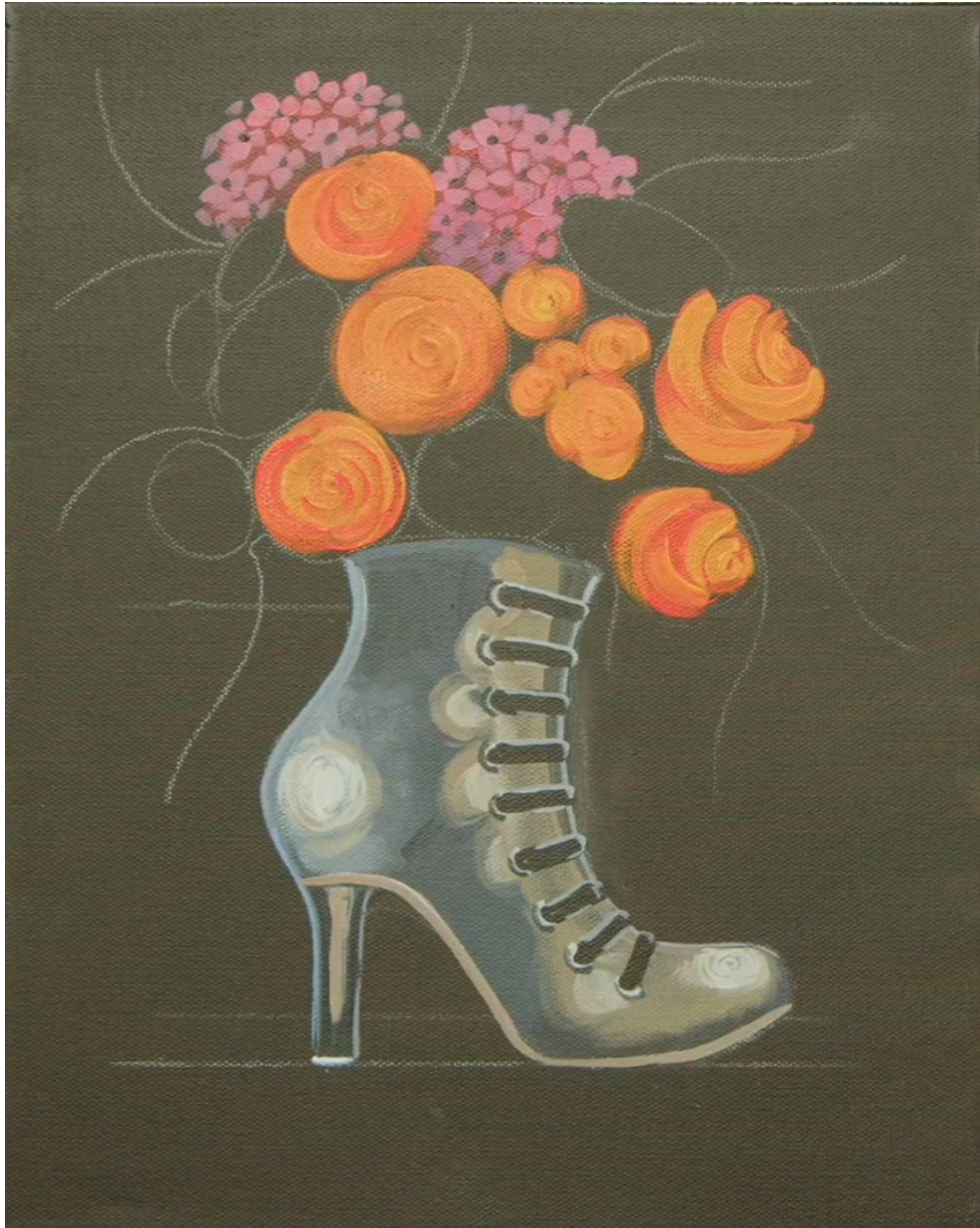
COLOR MIXES

- Yellow Orange = **CYM > CRM**

STEP DISCUSSION

Add **Yellow Orange mix** shades around the flowers, going in circles while paying attention to perspective. Think of how the folds of a rose overlap and go over itself. The roses can be messy, and everyone will do them differently. Simply focus on getting that circular motion down as you paint, making the flowers really stand out. Rinse the brush.

STEP 8 PHOTO



If you did not understand any part of this step you can ask in the comment section of this video and I will do my best to answer

Step 9 - Flower Highlights

Timestamp 39:29

“Sunshine Of Your Love”

PAINT

- Cadmium Red Medium = **CRM**
- Titanium White = **TW**
- Cadmium Yellow Medium = **CYM**

BRUSHES & TOOLS

- Medium Synthetic Round

COLOR MIXES

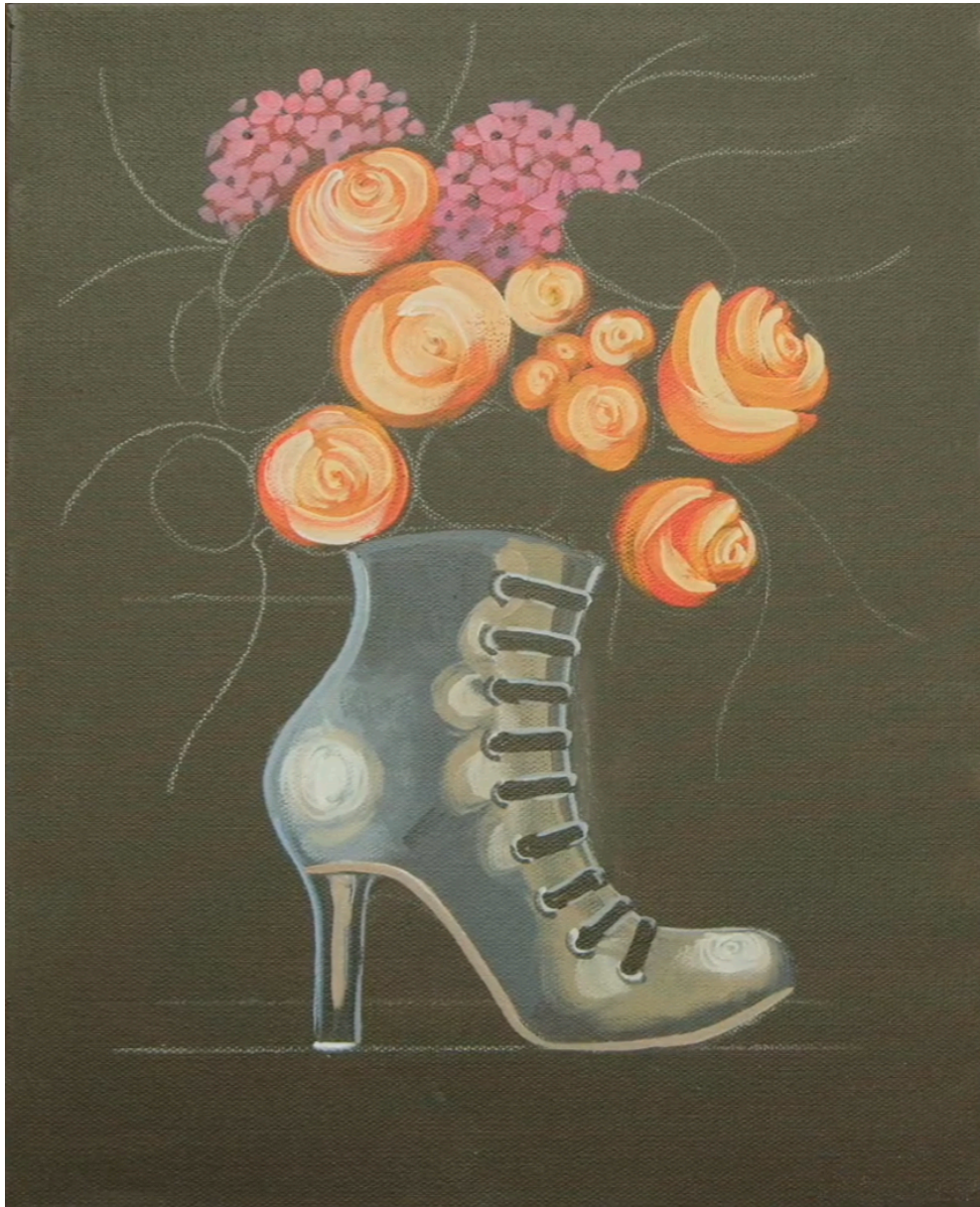
- Light Orange = **TW > CYM + CRM**

STEP DISCUSSION

Load the brush with **Light Orange mix**, really biasing it with Titanium White. Add small flicks of highlight along the roses occasionally. Use small swirling motions like before, using the toe for fine details, and the body of the brush for broad shading. Rinse the brush.

Dry the surface before continuing to the next step.

STEP 9 PHOTO



If you did not understand any part of this step you can ask in the comment section of this video and I will do my best to answer.

Step 10 - Starting Daisies

Timestamp 42:00

“Petal Here, Petal There”

PAINT

- Cadmium Yellow Medium = **CYM**
- Titanium White = **TW**
- Burnt Sienna = **BS**

BRUSHES & TOOLS

- Medium Synthetic Round

COLOR MIXES

- Earthy Brown = **CYM + BS**

STEP DISCUSSION

Load the brush with **Earthy Brown mix**, and add centers to the rest of the unfilled flower sketches. Rinse the brush.

Next with Titanium White, press petals around the center of a couple flowers. Add water as needed to improve flow. Simply press and lift the body of the brush to help get straight, consistent looking petals. For smaller flowers, gently use the toe of the brush to paint them. I chose to paint three flowers this way. Rinse the brush. Use a wet brush to clean and fix any mistakes if needed.

Dry the surface before continuing to the next step.

STEP 10 PHOTO



If you did not understand any part of this step you can ask in the comment section of this video and I will do my best to answer.

Step 11 - Finishing Flowers

Timestamp 44:40

“All In Bloom”

PAINT

- Cadmium Red Medium = **CRM**
- Cadmium Yellow Medium = **CYM**
- Titanium White = **TW**
- Burnt Sienna = **BS**
- Dioxazine Purple = **DP**

BRUSHES & TOOLS

- Medium Synthetic Round

COLOR MIXES

- Light Yellow = **TW > CYM**
- Light Purple = **TW > DP**

STEP DISCUSSION

Load the brush Cadmium Yellow Medium and bias it just a smidge with Cadmium Red Medium. Brush it along the white petals from the previous step. Rinse the brush.

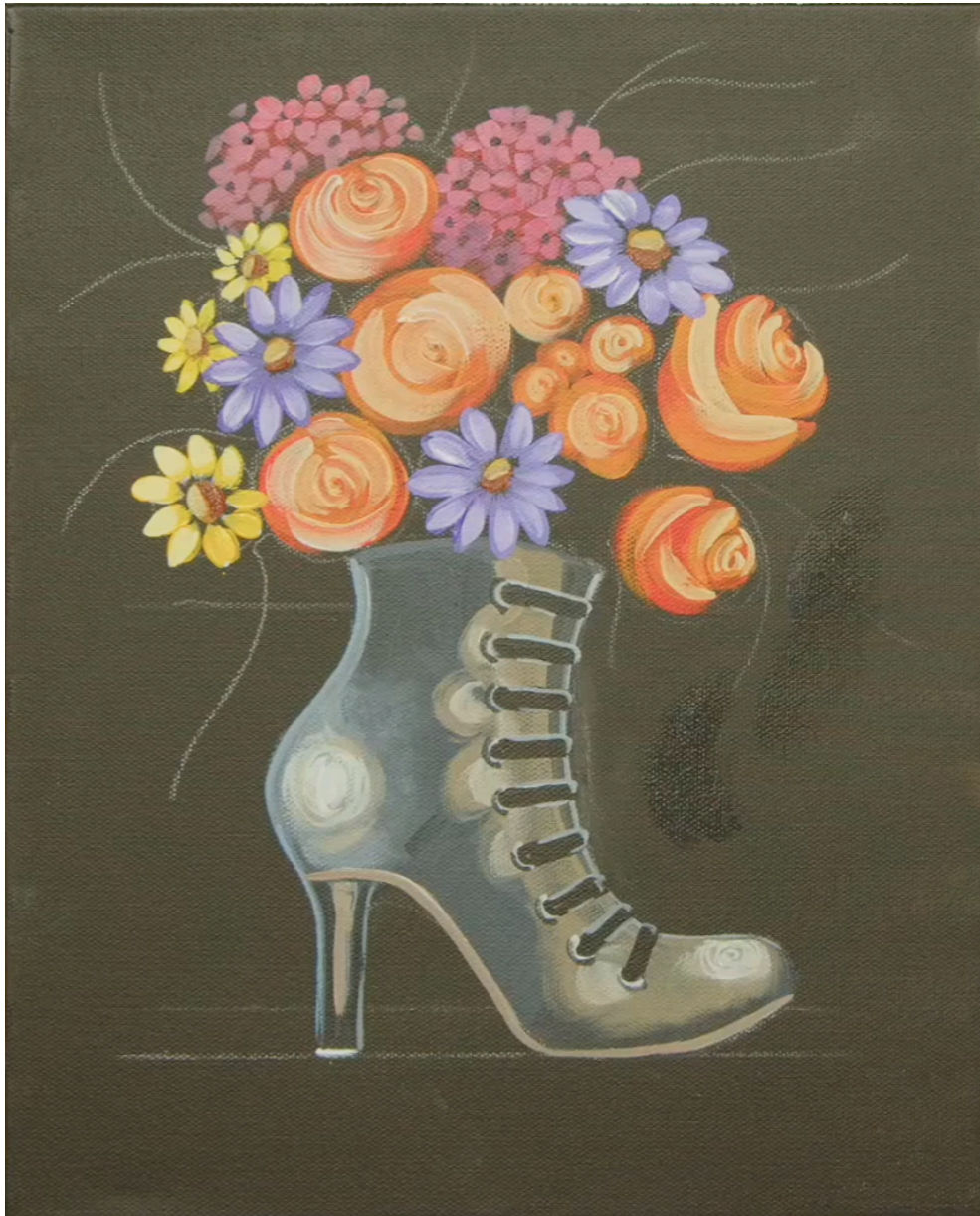
Then, load Dioxazine Purple and a bit of Titanium White, and fill in the rest of the flower sketches with more straight petals. Rinse the brush.

While we are here, highlight the yellow flowers with **Light Yellow mix**, simply going over the petals gently, leaving a bit of the color showing through either partially or wholly on a few. Rinse the brush. Repeat the process for the purple flowers using **Light Purple mix**. Rinse the brush.

Now, load Burnt Sienna and add small shadow marks along the bottom of the flower centers. Add a bit of **Light Yellow mix** to the dirty brush, and then highlight the flower centers. Rinse the brush. Fix any mistakes if needed with a wet brush.

Dry the surface before continuing to the next step.

STEP 11 PHOTO



If you did not understand any part of this step you can ask in the comment section of this video and I will do my best to answer.

Step 12 - Painting Surface

Timestamp 52:38

“Under-toe“

PAINT

- Cadmium Red Medium = **CRM**
- Cadmium Yellow Medium = **CYM**
- Burnt Sienna = **BS**
- Mars Black = **MB**

BRUSHES & TOOLS

- Medium Synthetic Angle

COLOR MIXES

- Orange = **CRM + CYM**

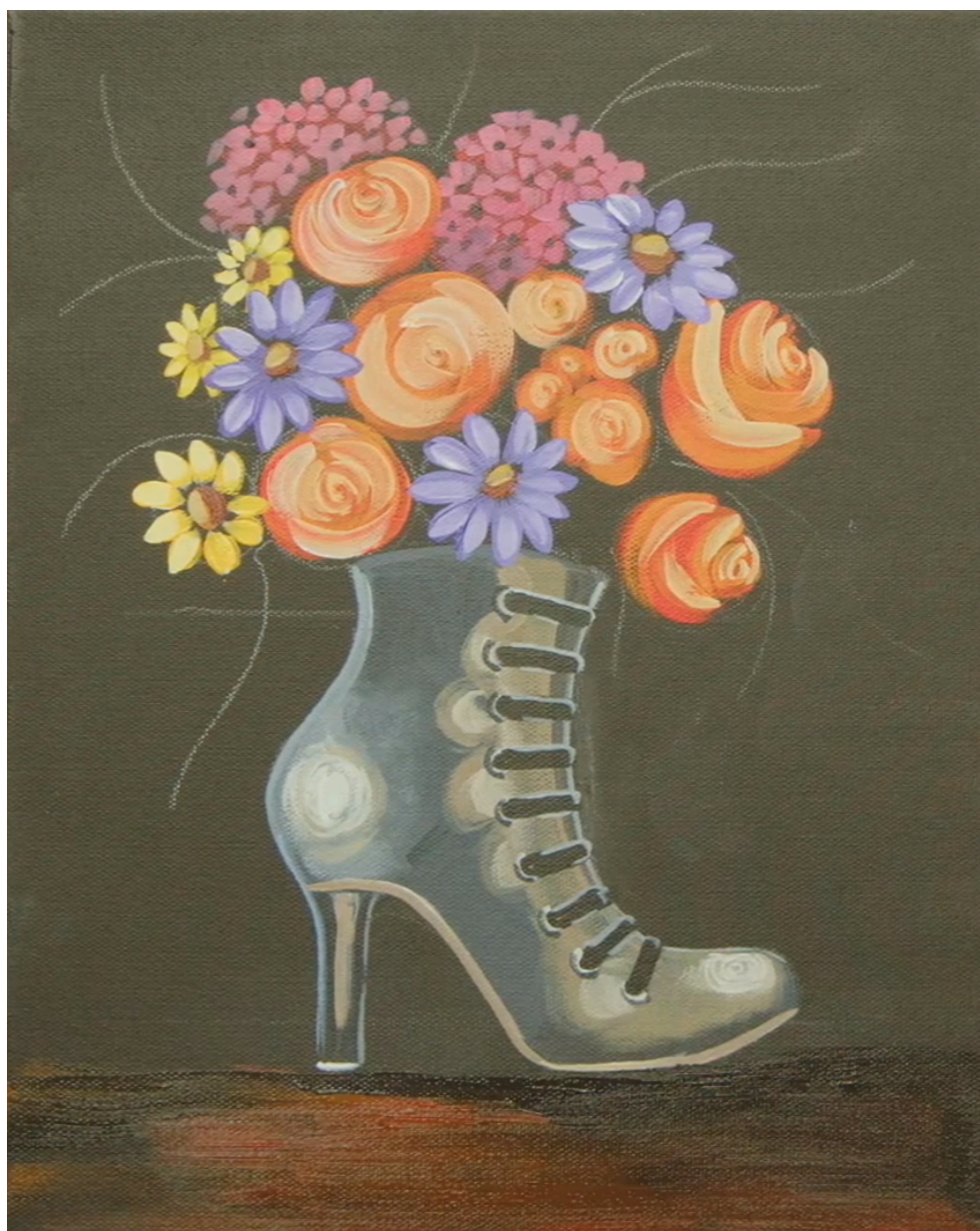
STEP DISCUSSION

Load Mars Black, and paint across the surface below the boot to ensure it is covered evenly. Then, try to lay a slightly thick coat of paint on top of the surface here so we can blend wet into wet. Add Burnt Sienna to the dirty brush, and blend it into the ground using horizontal back-and-forth strokes, occasionally switching the angle of the brush to achieve a scratchy effect. Add **Orange mix** and brush this along too, highlighting the surface somewhat. Rinse the brush.

Come back over with Mars Black and the other colors in this mix as you continue to develop the floor. Make sure it is dark underneath, but still brown and scratchy. Rinse the brush.

Dry the surface before continuing to the next step.

STEP 12 PHOTO



If you did not understand any part of this step you can ask in the comment section of this video and I will do my best to answer.

Step 13 - Foliage

Timestamp 56:00

“Leaves From The Vine”

PAINT

- Cadmium Yellow Medium = **CYM**
- Phthalo Green = **PG**
- Burnt Sienna = **BS**
- Mars Black = **MB**

BRUSHES & TOOLS

- Medium Synthetic Round

COLOR MIXES

- Vine Green = **PG + BS > CYM**

STEP DISCUSSION

With the **Vine Green mix**, start brushing along the vine sketches, and then add leaves all along them. They will be in pairs with one at the tip of the vine. Add Cadmium Yellow Medium to the dirty brush, and make a few scattered leaves below the flowers above the boot, and really wherever feels right. A few other vines will be lighter, varying in shade occasionally and becoming more yellow as you go. Make a few leaves in between some flowers as well. Rinse the brush.

Load the brush with Mars Black and a bit of water, and go along the bottom trim of the boot, above the beige line at the very bottom. Also make a little line up the heel as well. Rinse the brush.

Dry the surface before continuing to the next step.

STEP 13 PHOTO



If you did not understand any part of this step you can ask in the comment section of this video and I will do my best to answer.

Step 14 - Cleaning Up

Timestamp 1:04:49

“Shoe Shining”

PAINT

BRUSHES & TOOLS

- Medium Synthetic Angle

COLOR MIXES

STEP DISCUSSION

If there are any chalk marks left over from the sketch, use a damp brush to wipe them away. Also fix any mistakes or overpainting as well.

Sign.

STEP 14 PHOTO



If you did not understand any part of this step you can ask in the comment section of this video and I will do my best to answer.

Traceable

