

The Art Sherpa Presents

13 Days - Day - 9

Cute Creature

Guardian of The Woods

Name credit to Patron: Heather Campbell



12 Steps

Difficulty: Intermediate - 2 Hoot 🦉 🦉

Copyright © The Art Sherpa LLC, 2024. All Rights Reserved.

The content of this chapter, created and published by Cinnamon Cooney of The Art Sherpa LLC, is protected under international copyright laws. This material, including but not limited to text, images, paintings, and instructional content, is solely provided for the personal use of students for learning purposes.

No part of this material may be reproduced, distributed, displayed, transmitted, or otherwise used without the prior written permission of Cinnamon Cooney of The Art Sherpa LLC. This prohibition extends to both commercial and non-commercial uses. Any unauthorized use may infringe upon the intellectual property rights of The Art Sherpa LLC and could be subject to legal penalties.

By accessing, reading, or otherwise using this material, you, the student, agree to respect the intellectual property rights of The Art Sherpa LLC, and understand that this material is for your personal use and learning only.

It is your responsibility to understand and comply with all applicable local, state, national, and international laws when using this copyrighted material. All rights related to distribution, including the text and imagery within this work, are retained by Cinnamon Cooney, The Art Sherpa LLC.

For permission requests or inquiries, please contact The Art Sherpa LLC at support@theartsherpa.com.

Use policy

Student Use Policy of The Art Sherpa LLC

Personal Use: Students are allowed to print out the material provided by The Art Sherpa LLC for personal, at-home use. This includes studying and practicing techniques as presented in the material.

Private Parties: Students are permitted to make copies of the material for private parties, provided no money is exchanged in relation to the provision or use of the material. The use of the material is only for the purpose of facilitating the personal enjoyment and learning of painting within the confines of the private party.

Charitable Organizations: Libraries, educational institutions, and other non-profit organizations that exist to serve the community may request permission to print copies of the material for use in their efforts to help others. Such permission must be obtained directly from The Art Sherpa LLC at support@theartsherpa.com.

Painting Parties for Profit: If a student, individual, or business wishes to use the material for painting parties or events where profit is involved, a license must be purchased from The Art Sherpa LLC. This license allows the distribution of the material for the single business or single party only. It does not permit publication of the material in any other way, form, or through any other medium.

Any use of the material not expressly permitted in this Student Use Policy may infringe upon the intellectual property rights of The Art Sherpa LLC and could be subject to legal penalties

FOLLOW THE ART SHERPA

WEBSITE: <https://theartsherpa.com/>

FACEBOOK: <https://www.facebook.com/TheArtSherpa/>

INSTAGRAM: <https://www.instagram.com/theartsherpa>

PINTEREST: <https://www.pinterest.com/cinnamoncooney/>



#THEARTSHERPA
#STEPBYSTEPPAINTING
#ACRYLICPAINTING

ABOUT THE ART SHERPA:

Artwork and video is the sole property of The Art Sherpa™ and intended for the students personal education and Enjoyment. For questions regarding using any Art Sherpa painting in a commercial setting labs@theartsherpa.com for all other questions support@theartsherpa.com Read our full disclosure here that covers partnerships and affiliate links <http://bit.ly/affiliatedisclosureTAS>

TABLE OF CONTENTS

PAINT AND TOOL GUIDE	5
Video Chapter Guide	6
Step 1 - Ready, Layer One	7
STEP 1 PHOTO	8
Step 2 - Smooth Blending	9
STEP 2 PHOTO	10
Step 3 - Sketching In	11
STEP 3 PHOTO	12
Step 4 - Planting Trees	13
STEP 4 PHOTO	14
Step 5 - Lighting Up The Trees	15
STEP 5 PHOTO	16
Step 6 - Finding Features	17
STEP 6 PHOTO	18
Step 7 - Blocking In Features	19
STEP 7 PHOTO	20
Step 8 - Blocking In Eyes	21
STEP 8 PHOTO	22
Step 9 - Fluffing Up	23
STEP 9 PHOTO	24
Step 10 - Lighting Up The Eyes	25
STEP 10 PHOTO	27
Step 11 - Cool 'Stache	28
STEP 11 PHOTO	30
Step 12 - Hot Highlights	31
STEP 12 PHOTO	32
Traceable	33

PAINT AND TOOL GUIDE

Use this paint legend below to understand the symbols that I use to give you important painting information.

PAINT

- Cadmium Red Medium = **CRM**
- Quinacridone Magenta = **QM**
- Cadmium Yellow Medium = **CYM**
- Phthalo Blue = **PB**
- Burnt Sienna = **BS**
- Dioxazine Purple = **DP**
- Mars Black = **MB**
- Titanium White = **TW**
- Golden's Acrylic Satin Glazing Liquid = **ASL**

BRUSHES & TOOLS

- Large Synthetic Oval Mop
- Large Synthetic Round
- X-Small Synthetic Round
- Small Synthetic Round
- Grass Comb/Grainer

TOOLS

- Chalk Pencil or Watercolor Pencil
- 12x12 Canvas (If you notice that your canvas started to warp, as sometimes happens, just turn the canvas over and put it back side forward on your easel, then mist the back of the canvas. It usually resolves itself. Let it dry before you proceed.)
- Optional: Sta-Wet Palette

SYMBOL GUIDE

- > Less than previous amount
- < More than previous amount
- + Equal amount

Techniques You May Use In This Painting

- Color Theory
- Expressive Painting Strokes
- Being Painterly and Loose
- Finding Value
- Dry Brushing
- Directionality
- Blending Wet into Wet
- Color Mixing
- Fur

Video Chapter Guide

Below are the timestamps we inserted in the tutorial video so that you can easily coordinate using the book and the tutorial video simultaneously.

Intro	00:00	
Step 1	2:28	Ready, Layer One
Step 2	6:54	Smooth Blending
Step 3	11:28	Sketching In
Step 4	14:36	Planting Trees
Step 5	21:16	Lighting Up The Trees
Step 6	29:16	Finding Features
Step 7	31:28	Blocking In Features
Step 8	34:15	Blocking In Eyes
Step 9	36:42	Fluffing Up
Step 10	44:53	Lighting Up The Eyes
Step 11	52:48	Cool 'Stache
Step 12	1:00:42	Hot Highlights
	1:04:10	Sign

Step 1 - Ready, Layer One

Timestamp 2:28

“Lay It Down”

PAINT

- Cadmium Red Medium = **CRM**
- Cadmium Yellow Medium = **CYM**
- Golden's Acrylic Satin Glazing Liquid = **ASL**

BRUSHES & TOOLS

- Large Synthetic Oval Mop

COLOR MIXES

- Dark Orange = **CRM > CYM + ASL**

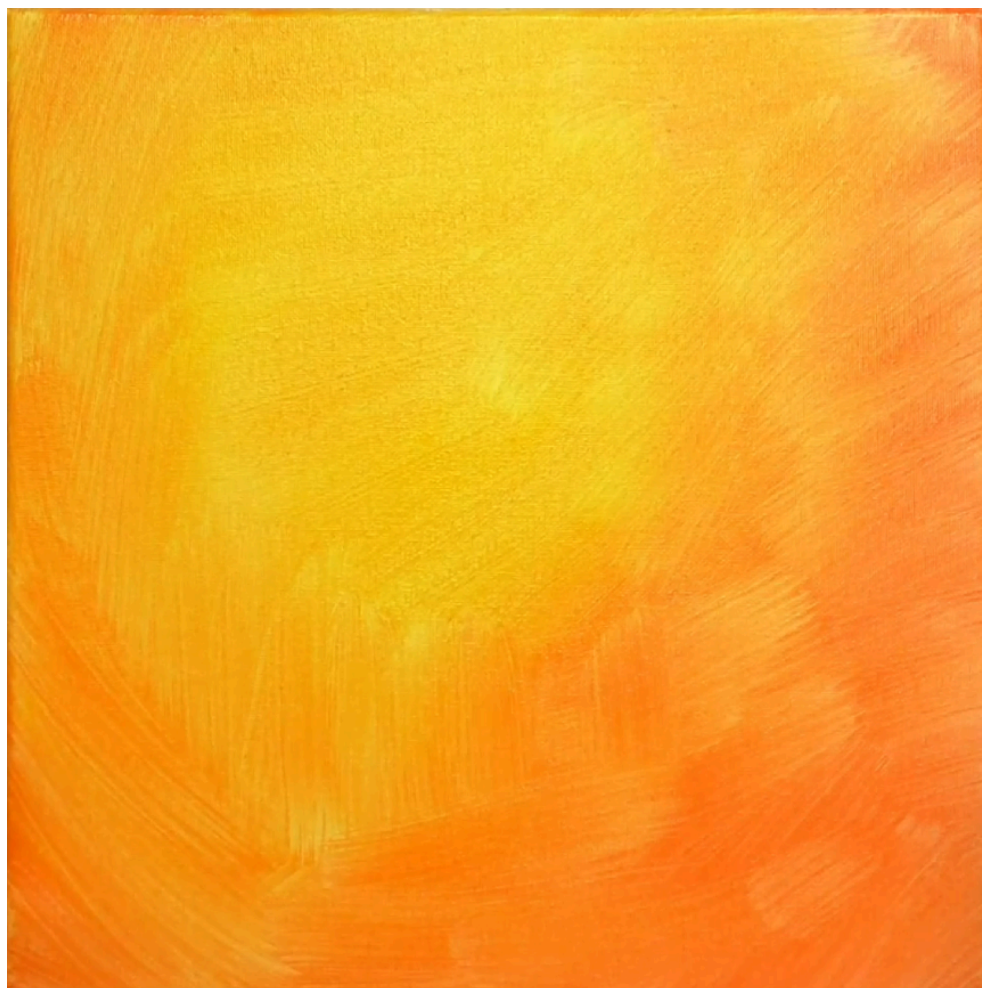
STEP DISCUSSION

Load the brush with **Dark Orange mix**, and then loosely paint the sides of the canvas with curved strokes, leaving the top and middle of the surface empty. Bias the mix with Cadmium Yellow Medium, and brush it vertically into the left edge of the canvas. There should be a large gap showing the bare canvas in the middle, slightly to the left of center and empty all the way to the top. Then, add even more Cadmium Yellow Medium, and fill in the empty space completely. Dry brush this mix into the previous application, still using fast back-and-forth sweeping motions as you paint. Rinse the brush.

It may look very scratchy, but you can grab a second identical brush and dry brush the entire surface. When you blend this way, you will achieve an incredibly even gradient and soft effect. Rinse the brush.

Dry the surface before continuing to the next step.

STEP 1 PHOTO



If you did not understand any part of this step you can ask in the comment section of this video and I will do my best to answer.

Step 2 - Smooth Blending

Timestamp 6:54

“Blender-ific”

PAINT

- Cadmium Red Medium = **CRM**
- Cadmium Yellow Medium = **CYM**
- Titanium White = **TW**
- Golden's Acrylic Satin Glazing Liquid = **ASL**

BRUSHES & TOOLS

- Large Synthetic Oval Mop

COLOR MIXES

- Dark Orange = **CRM > CYM + ASL**
- Light Yellow = **CYM + TW > ASL**

STEP DISCUSSION

Load the brush with **Dark Orange mix**, really biasing it towards Cadmium Red Medium. Brush it up and down the right edge, as well as the bottom third of the canvas. Add more Glazing Liquid to improve flow, replacing that curved dark application from before. Bias the mix back over with a lot of Cadmium Yellow Medium, and repeat the process for the inside of the background, still sweeping back and forth quickly. Dry brush all around the surface to continue softening it, bouncing between each pigment as you blend. Rinse the brush and dry it completely.

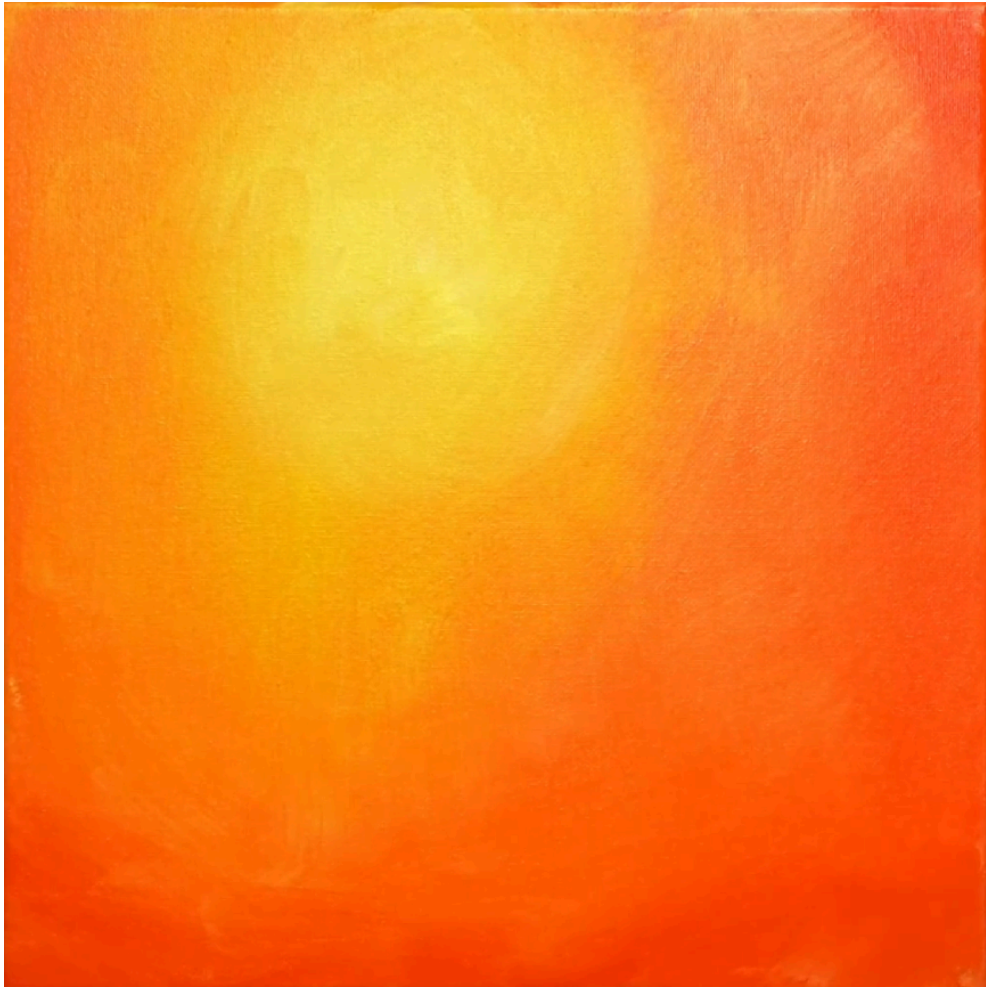
Then, with Glazing Liquid, continue to soften the canvas. It is OK if a bit of pigment gets into it. Rinse the brush.

Now, with **Light Yellow mix**, sweep back and forth in the center of the lighter yellow background. It will be in the center of the surface, above and slightly to the left. Soften this mix as well. Rinse the brush.

Dry the surface before continuing to the next step.

Sherpa Tip: When using this much Glazing Liquid, it will take a little longer to dry, so ensure it really is completely dry before moving on. Another thing to mention is, because of how roughly we used the brushes in these steps, it would be a good idea to wash them with soap and water and let them dry completely after the lesson. This is a good habit to keep in general to extend the life of your brushes, but especially after vigorous use like this.

STEP 2 PHOTO



If you did not understand any part of this step you can ask in the comment section of this video and I will do my best to answer.

Step 3 - Sketching In

Timestamp 11:28
“Bit of a Slouch”

PAINT

- Dioxazine Purple = **DP**

BRUSHES & TOOLS

- Large Synthetic Round

COLOR MIXES

STEP DISCUSSION

I chose to freehand this image but I have also provided a traceable if you prefer to use that method. There is no right or wrong way to get your image on the canvas. You can grid, transfer, or freehand, whatever makes you the most comfortable. If you are free handing, you have the picture that follows this step, and the traceable to assist you. I drew only the major objects using a Dioxazine Purple. I will be sketching facial features in a later step, but for right now it is only the main figure.

On the right hand side, about three inches down from the top corner, make a mark for the beginning of the head. Go slightly up as you paint left and curve down and around for its head, right before you reach the vertical middle of the surface. Make an elongated curve all the way down off the canvas, giving the figure a slouching look. Fill in the figure with Dioxazine Purple.

STEP 3 PHOTO



If you did not understand any part of this step you can ask in the comment section of this video and I will do my best to answer.

Step 4 - Planting Trees

Timestamp 14:36

“Time Travel”

PAINT

- Burnt Sienna = **BS**
- Mars Black = **MB**
- Golden's Acrylic Satin Glazing Liquid = **ASL**

BRUSHES & TOOLS

- Large Synthetic Round

COLOR MIXES

- Dark Brown = **BS + MB**

STEP DISCUSSION

Load the **Dark Brown mix** and then make two trees behind the figure using short but straight lines. Be careful not to go over it too much. Also make a handful of branches on these trees. Add a bit of Glazing Liquid to help with flow.

Starting half an inch from the left side of the canvas, make a very tall tree just using the body of the brush, going all the way up from the bottom edge. It may have a slight deviation or bend in the middle as trees in nature would. Make a second tree about half an inch to the right of the previous one, this time going straight up. Paint several branches along both trees. Add one more very skinny tree going up and off the surface right next to the second tree. Take a moment and broaden the base of the trees a bit to make them seem connected to the ground. Rinse the brush.

Dry the surface before continuing to the next step.

STEP 4 PHOTO



If you did not understand any part of this step you can ask in the comment section of this video and I will do my best to answer.

Step 5 - Lighting Up The Trees

Timestamp 21:16
“Light Up The Park”

PAINT

- Cadmium Red Medium = **CRM**
- Cadmium Yellow Medium = **CYM**
- Burnt Sienna = **BS**
- Mars Black = **MB**
- Golden's Acrylic Satin Glazing Liquid = **ASL**

BRUSHES & TOOLS

- Small Synthetic Round

COLOR MIXES

- Brown Orange = **CRM + CYM + BS**
- Yellow Orange = **CYM > CRM**
- Dark Brown = **BS + MB**

STEP DISCUSSION

Load the brush with **Brown Orange mix** and a bit of Glazing Liquid, and paint along the top halves of the trees to the left. It may seem like tedious work but it will add a lot to the natural value and shading without too much thought. Add pure Burnt Sienna to the brush as you paint down the middle. Mars Black may get in there too, and that is OK. Wipe the brush to offload some pigment, and blend the trees to the right behind the monster as well. Rinse the brush.

Go overtop the higher parts of the trees to the left with **Yellow Orange mix**. We are aiming to give the feeling of an intense light behind it, trying not to change the color too much. Brush this pigment very lightly along the right side of the bigger trees, going down just a bit. Add **Brown Orange mix** without rinsing, and paint it along the center-most branches behind the monster. Rinse the brush.

Dry the surface before continuing to the next step.

STEP 5 PHOTO



If you did not understand any part of this step you can ask in the comment section of this video and I will do my best to answer.

Step 6 - Finding Features

Timestamp 29:16
“The Long Face”

PAINT

BRUSHES & TOOLS

- Chalk Pencil or Watercolor Pencil

COLOR MIXES

STEP DISCUSSION

I chose to freehand the facial features within this step, but you can also use the provided traceable or step images to assist you. Use a Chalk Pencil or Watercolor Pencil for the sketch.

Since the monster is facing to the left, it is important to pay careful attention to placement here. Imagine the head as a large ball, with the nose in the middle of it as it faces away. Place the nose on the far side of the face, less than a quarter of an inch from where the paint ends but still not super close to the edge. The mouth below will almost be cat-like in how it connects to the nose underneath, and has a very large, swooping mouth going down and to the right, curling up slightly.

Across from the nose, about a quarter of an inch to the right, make a big eye shape, slightly elongated. Also place the iris in the upper-left quadrant of the eye. For the other eye on the far side, make a much skinnier yet still big shape. It will look like a squashed ellipse, and each eye should match according to perspective. Also place hatch marks along the mouth for its mustache, and draw in the bridge of a nose just a bit. Add marks for the shading above the eye, where an eyebrow would go. Continue until you are happy with the placement of the facial features. The goal is exploring and placing, not perfection because it can always be erased.

STEP 6 PHOTO



If you did not understand any part of this step you can ask in the comment section of this video and I will do my best to answer

Step 7 - Blocking In Features

Timestamp 31:28

“Blue, Purple, Blurple”

PAINT

- Phthalo Blue = **PB**
- Titanium White = **TW**
- Dioxazine Purple = **DP**

BRUSHES & TOOLS

- Small Synthetic Round

COLOR MIXES

- Light Blue = **PB > TW**

STEP DISCUSSION

Load Dioxazine Purple to the brush, and exaggerate the bend of the head somewhat. Also go above the left-most far eye with a bushy brow. It is OK to fill in the eye sketch a bit as we will go over it later. Rinse the brush.

Now with a little bit of Titanium White, fill in the middle of the bigger eyeball, not the iris. This is for shading in the future. Also add a very light outline for the iris. Rinse the brush.

Now into the **Light Blue mix**, very carefully fill in the nose. Paint the line below that connects to the mouth, and the bridge of the nose. Dry brush up into the eyebrow just a bit as well. Rinse the brush.

Dry the surface before continuing to the next step.

STEP 7 PHOTO



If you did not understand any part of this step you can ask in the comment section of this video and I will do my best to answer.

Step 8 - Blocking In Eyes

Timestamp 34:15
“Seeing Eye to Eye”

PAINT

- Cadmium Red Medium = **CRM**
- Cadmium Yellow Medium = **CYM**
- Mars Black = **MB**

BRUSHES & TOOLS

- Small Synthetic Round

COLOR MIXES

- Orange = **CRM + CYM**

STEP DISCUSSION

Paint Cadmium Yellow Medium into the white highlight in the eye, giving it a bright glow. Add **Orange mix** to the brush and fill in the rest of the eyeball, not going over the highlight too much. Line around the iris and make sure the eyeball is evenly filled in. Rinse the brush, and then with Mars Black, fill in the iris. Also go around the eye itself, brushing down and around for dark fur. Also fill in the far eye with Mars Black, making sure it is also evenly covered. Rinse the brush.

STEP 8 PHOTO



If you did not understand any part of this step you can ask in the comment section of this video and I will do my best to answer

Step 9 - Fluffing Up

Timestamp 36:42

“Fluff This Critter Up”

PAINT

- Cadmium Red Medium = **CRM**
- Quinacridone Magenta = **QM**
- Dioxazine Purple = **DP**
- Mars Black = **MB**
- Titanium White = **TW**
- Golden's Acrylic Gloss Glazing Liquid = **ASL**

BRUSHES & TOOLS

- Small Synthetic Round
- Grass Comb/Grainer

COLOR MIXES

- Deep Magenta = **DP + QM > CRM**
- Light Purple = **DP > TW**

STEP DISCUSSION

Load the Round brush with **Deep Magenta mix**, and fluff it up and around the eyebrow on the side of the face. Brush it down and around the mouth as a mustache, and all the way down the side to the bottom of the surface. Bias the mix with Dioxazine Purple near the bottom of the body. Use the mix to fluff up the top of the head past the eyebrow, and add Dioxazine Purple as you near the back of the head. Rinse the brush.

Load a slightly damp Grainer with **Light Purple mix**, and fill in the fur below the mouth and all along the body. Really fill in this area with downward strokes, the brush should help it seem like fur as it breaks up naturally. Also paint along the back of the head, and brush over a bit of the fur along the left side of the body. Rinse the brush.

Use quite a bit of **Deep Magenta mix** to give occasional highlight moments along the body fur. Rinse the brush.

Now with Mars Black and a bit of Glazing Liquid, very carefully go over the dark fur around the eye. Brush around it in a sweeping motion towards the right as you refine the fur. Rinse the brush.

With the highlight mix from before, using **Deep Magenta mix**, add more highlights to the forehead as well as the eyebrow.

STEP 9 PHOTO



If you did not understand any part of this step you can ask in the comment section of this video and I will do my best to answer.

Step 10 - Lighting Up The Eyes

Timestamp 44:53

“Eyes You Can Count On”

PAINT

- Cadmium Red Medium = **CRM**
- Cadmium Yellow Medium = **CYM**
- Phthalo Blue = **PB**
- Burnt Sienna = **BS**
- Mars Black = **MB**
- Titanium White = **TW**

BRUSHES & TOOLS

- Small Synthetic Round

COLOR MIXES

- Blue Grey = **MB + PB > TW**
- Orange = **CRM + CYM**
- Dark Brown = **BS + MB**
- Light Yellow = **CYM > TW**

STEP DISCUSSION

Load the brush with **Blue Grey mix**, and paint it up over the eyelid of the big eye. Add pressure as you go over it for a nice contour. Make a thin line underneath the eye too, brushing just a bit of pigment back into the dark fur. Rinse the brush. Next, use **Dark Brown mix** and tint the inside corners beside the iris in the eye. Dry brushing it inward for a small shadow, and along the top below the eyelid. Rinse the brush.

Now with **Orange mix**, blend the middle values of the eye, and add pure Cadmium Yellow Medium to the center highlight. Rinse the brush.

With pure Mars Black, make sure the pupil is dark and evenly round. Rinse the brush.

Next, add an extra little highlight to the eye with **Light Yellow mix**. Rinse the brush.

Once more with Mars Black, fill in the nostrils of the nose, and give the line below a small outline. Rinse the brush.

Now, use **Light Yellow mix** and brush it gently over the top of the nose. Bias the mix with Titanium White for a highlight, making a much lighter value. Then, with Phthalo Blue, blend these two colors together. It should retain the highlight but be very soft. Rinse the brush.

Use Mars Black and add dark fur shading to the eyebrow above the far eye. Brush it up and around the eye, dry brushing into the purple a bit to give it a furry look. Rinse the brush.

Grab a bit of Titanium White, and make two small little dots for eyeball reflections in the big eye. The second one should be smaller than the first. Also add a small highlight dot to the far eye.

Rinse the brush. Then, with **Orange mix**, brush it slightly along the bottom outside of the far eyeball to make it stand out. Rinse the brush.

Load the brush with Titanium White and a smidge of Cadmium Yellow Medium, and add a few reflection marks to the nose as well. Rinse the brush.

Back into the **Light Yellow mix**, finish the highlight within the eye. Rinse the brush.

Then with the **Blue Grey mix**, make a slightly lighter shade along the right side of the top eyelid.

Dry the surface before continuing to the next step.

STEP 10 PHOTO



If you did not understand any part of this step you can ask in the comment section of this video and I will do my best to answer.

Step 11 - Cool 'Stache

Timestamp 52:48

"Tree Speak"

PAINT

- Quinacridone Magenta = **QM**
- Cadmium Yellow Medium = **CYM**
- Phthalo Blue = **PB**
- Dioxazine Purple = **DP**
- Mars Black = **MB**
- Titanium White = **TW**
- Golden's Acrylic Satin Glazing Liquid = **ASL**

BRUSHES & TOOLS

- Small Synthetic Round
- Grass Comb/Grainer

COLOR MIXES

- Light Blue = **PB > TW**
- Light Purple = **DP > TW**
- Burgundy = **QM + DP**
- Indigo = **PB + DP**

STEP DISCUSSION

Load the Grainer with **Light Blue mix** and a bit of Glazing Liquid. Then, brush a few highlights along the dark fur below the face. Add Dioxazine Purple to the dirty brush as you go, filling up the body with many irregular marks. Brush with small, intentional strokes to get that fur look. Also use a bit of Quinacridone Magenta occasionally to mix up the fur application. Rinse the brush.

Now with the **Burgundy mix**, add a few dark furs along the head. Add **Light Purple mix** to the dirty brush and continue blending the head fur. Bias the mix with even more Titanium White for bright highlights along the eyebrow fur and forehead, above the darkness around the eyes. Rinse the brush.

Load the brush with **Indigo mix** and run it all along the backside of the head. Rinse the brush.

With Mars Black and a bit of Glazing Liquid, refine the dark fur around the eye and dry brush it very slightly up. Rinse the brush.

Then with **Light Blue mix** and Glazing Liquid, paint the mustache down and over below the nose. It should be almost walrus shaped, and extend all the way along the face to the right. Add Titanium White for highlights along this area. Rinse the brush, and repeat the process, getting even lighter with more Glazing Liquid as well. Add the lightest highlights with short curved strokes near the nose, biasing the mix just a bit with Cadmium Yellow Medium. Rinse the brush.

Now with Phthalo Blue, add a few darker blue fur marks along the body. Rinse the brush.

Switch to the Round brush and load Titanium White with a smidge of Phthalo Blue, running it over and along the top of the nose. Rinse the brush.

Now with **Indigo mix**, paint in the nostrils once again. Dry brush the color around here, and then add Titanium White for a highlight outline around each nostril. Rinse the brush.

Dry the surface before continuing to the next step.

STEP 11 PHOTO



If you did not understand any part of this step you can ask in the comment section of this video and I will do my best to answer.

Step 12 - Hot Highlights

Timestamp 1:00:42

“Fantasy Creature Fun“

PAINT

- Cadmium Red Medium = **CRM**
- Phthalo Blue = **PB**
- Mars Black = **MB**
- Titanium White = **TW**
- Golden's Acrylic Satin Glazing Liquid = **ASL**

BRUSHES & TOOLS

- Grass Comb/Grainer
- X-Small Synthetic Round

COLOR MIXES

- Light Slate = **TW > PB + MB**

STEP DISCUSSION

Load the Round brush with Titanium White, wetting it with water slightly. Then, add a small reflection to the cornea of the eye, and a bit along the bottom eyelid. Also add reflection marks to the nostrils, and very briefly on the tip of the nose. After that, make a few haphazard highlight marks on the mustache furs. Maintain the directionality of the fur here as you do these. Rinse the brush.

Switch to the Grainer, and then load Cadmium Red Medium. Wipe off the brush a bit to control the amount applied, and add brief pops of color all along the body of the creature. Also add a few red moments on the head and down its side. Rinse the brush.

Back to the Round brush, load **Light Slate mix** and paint it along the eyelids. Rinse the brush.

Sign.

STEP 12 PHOTO



If you did not understand any part of this step you can ask in the comment section of this video and I will do my best to answer.

Traceable

