

The Art Sherpa Presents

13 Days - Day - 13
Headless Horseman

Hey, Wait Up

Name credit to Patron: Bill Pittillo



15 Steps

Difficulty: Challenging - 3 Hoot 🦉🦉🦉

Copyright © The Art Sherpa LLC, 2024. All Rights Reserved.

The content of this chapter, created and published by Cinnamon Cooney of The Art Sherpa LLC, is protected under international copyright laws. This material, including but not limited to text, images, paintings, and instructional content, is solely provided for the personal use of students for learning purposes.

No part of this material may be reproduced, distributed, displayed, transmitted, or otherwise used without the prior written permission of Cinnamon Cooney of The Art Sherpa LLC. This prohibition extends to both commercial and non-commercial uses. Any unauthorized use may infringe upon the intellectual property rights of The Art Sherpa LLC and could be subject to legal penalties.

By accessing, reading, or otherwise using this material, you, the student, agree to respect the intellectual property rights of The Art Sherpa LLC, and understand that this material is for your personal use and learning only.

It is your responsibility to understand and comply with all applicable local, state, national, and international laws when using this copyrighted material. All rights related to distribution, including the text and imagery within this work, are retained by Cinnamon Cooney, The Art Sherpa LLC.

For permission requests or inquiries, please contact The Art Sherpa LLC at support@theartsherpa.com.

Use policy

Student Use Policy of The Art Sherpa LLC

Personal Use: Students are allowed to print out the material provided by The Art Sherpa LLC for personal, at-home use. This includes studying and practicing techniques as presented in the material.

Private Parties: Students are permitted to make copies of the material for private parties, provided no money is exchanged in relation to the provision or use of the material. The use of the material is only for the purpose of facilitating the personal enjoyment and learning of painting within the confines of the private party.

Charitable Organizations: Libraries, educational institutions, and other non-profit organizations that exist to serve the community may request permission to print copies of the material for use in their efforts to help others. Such permission must be obtained directly from The Art Sherpa LLC at support@theartsherpa.com.

Painting Parties for Profit: If a student, individual, or business wishes to use the material for painting parties or events where profit is involved, a license must be purchased from The Art Sherpa LLC. This license allows the distribution of the material for the single business or single party only. It does not permit publication of the material in any other way, form, or through any other medium.

Any use of the material not expressly permitted in this Student Use Policy may infringe upon the intellectual property rights of The Art Sherpa LLC and could be subject to legal penalties

FOLLOW THE ART SHERPA

WEBSITE: <https://theartsherpa.com/>

FACEBOOK: <https://www.facebook.com/TheArtSherpa/>

INSTAGRAM: <https://www.instagram.com/theartsherpa>

PINTEREST: <https://www.pinterest.com/cinnamoncooney/>



#THEARTSHERPA
#STEPBYSTEPPAINTING
#ACRYLICPAINTING

ABOUT THE ART SHERPA:

Artwork and video is the sole property of The Art Sherpa™ and intended for the students personal education and Enjoyment. For questions regarding using any Art Sherpa painting in a commercial setting labs@theartsherpa.com for all other questions support@theartsherpa.com Read our full disclosure here that covers partnerships and affiliate links <http://bit.ly/affiliatedisclosureTAS>

TABLE OF CONTENTS

PAINT AND TOOL GUIDE	5
Video Chapter Guide	6
Step 1 - Colored Ground	7
STEP 1 PHOTO	8
Step 2 - Fiery Glaze	9
STEP 2 PHOTO	10
Step 3 - Distant Trees	11
STEP 3 PHOTO	12
Step 4 - Smoke Layer	13
STEP 4 PHOTO	14
Step 5 - Fire And Foreground	15
STEP 5 PHOTO	16
Step 6 - Forest Glow And Trees	17
STEP 6 PHOTO	18
Step 7 - The Fire Has Spread	19
STEP 7 PHOTO	20
Step 8 - Image Transfer	21
STEP 8 PHOTO	22
Step 9 - Blocking In Figure	23
STEP 9 PHOTO	24
Step 10 - Further Blocking In	25
STEP 10 PHOTO	26
Step 11 - Horse Details	27
STEP 11 PHOTO	28
Step 12 - Finishing Horse	29
STEP 12 PHOTO	30
Step 13 - Blocking In Torso & Head	31
STEP 13 PHOTO	32
Step 14 - Pumpkin Head & Highlights	33
STEP 14 PHOTO	34
Step 15 - A Ghoulish Glow	35
STEP 15 PHOTO	36
Traceable	37

PAINT AND TOOL GUIDE

Use this paint legend below to understand the symbols that I use to give you important painting information.

PAINT

- Cadmium Red Medium = **CRM**
- Cadmium Yellow Medium = **CYM**
- Burnt Sienna = **BS**
- Mars Black = **MB**
- Titanium White = **TW**
- Golden's Acrylic Satin Glazing Liquid = **ASL**
- Fluid White Paint = **FWP**

BRUSHES & TOOLS

- Large Synthetic Oval Mop
- Small Synthetic Round
- Large Synthetic Round
- Medium Hog Round
- X-Small Round Liner
- Deerfoot Stippler

TOOLS

- Saral Paper
- Artist Tape
- 11x14 Canvas (If you notice that your canvas started to warp, as sometimes happens, just turn the canvas over and put it back side forward on your easel, then mist the back of the canvas. It usually resolves itself. Let it dry before you proceed.)
- Optional: Sta-Wet Palette

SYMBOL GUIDE

- > Less than previous amount
- < More than previous amount
- + Equal amount

Techniques You May Use In This Painting

- Color Theory
- Implying Foliage
- Expressive Painting Strokes
- Atmospheric Perspective
- Finding Value
- Dry Brushing
- Directionality
- Blending Wet into Wet
- Setting a Horizon line
- Color Mixing
- Fur
- Implying Motion
- Painting a Silhouette Landscape

Video Chapter Guide

Below are the timestamps we inserted in the tutorial video so that you can easily coordinate using the book and the tutorial video simultaneously.

Intro	00:00	
Step 1	2:13	Colored Ground
Step 2	6:52	Fiery Glaze
Step 3	10:51	Distant Trees
Step 4	20:51	Smoke Layer
Step 5	27:51	Fire And Foreground
Step 6	32:04	Forest Glow And Trees
Step 7	40:18	The Fire Has Spread
Step 8	52:32	Image Transfer
Step 9	54:42	Blocking In Figure
Step 10	1:04:22	Further Blocking In
Step 11	1:15:15	Horse Details
Step 12	1:20:34	Finishing Horse
Step 13	1:33:25	Blocking In Torso & Head
Step 14	1:38:34	Pumpkin Head & Highlights
Step 15	1:49:22	A Ghoulish Glow
	1:51:30	Sign

Step 1 - Colored Ground

Timestamp 2:13
“Ashen Grey”

PAINT

- Burnt Sienna = **BS**
- Titanium White = **TW**
- Mars Black = **MB**

BRUSHES & TOOLS

- Large Synthetic Oval Mop

COLOR MIXES

- Smoke = **MB + BS > TW**

STEP DISCUSSION

Load the brush with **Smoke mix**, and then roughly paint the entire canvas until it is loosely covered. Smooth the paint somewhat by applying long strokes, vertically and horizontally. This helps to ensure that the canvas is completely covered. Rinse the brush.

Dry the surface before continuing to the next step.

STEP 1 PHOTO



If you did not understand any part of this step you can ask in the comment section of this video and I will do my best to answer.

Step 2 - Fiery Glaze

Timestamp 6:52
“Smouldering”

PAINT

- Cadmium Red Medium = **CRM**
- Cadmium Yellow Medium = **CYM**
- Burnt Sienna = **BS**
- Mars Black = **MB**
- Titanium White = **TW**
- Golden's Acrylic Satin Glazing Liquid = **ASL**

BRUSHES & TOOLS

- Large Synthetic Oval Mop

COLOR MIXES

- Bright Orange = **CRM + CYM**
- Smoke = **MB + BS > TW**

STEP DISCUSSION

Load the brush with **Bright Orange mix**, and add Glazing Liquid to improve flow. Brush it back and forth along the upper-center of the canvas. Add **Smoke mix** to the dirty brush as you near the sides of the canvas. Continue to blend these mixes together until there is a distinct orange tinted sky in the middle of the background. Rinse the brush.

Bias the **Bright Orange mix** with Cadmium Red Medium and very carefully dust it along the bottom of the orange area. Dry brush until you are satisfied with the result. Rinse the brush.

Dry the surface before continuing to the next step.

STEP 2 PHOTO



If you did not understand any part of this step you can ask in the comment section of this video and I will do my best to answer.

Step 3 - Distant Trees

Timestamp 10:51

“Calm Before The Flare”

PAINT

- Burnt Sienna = **BS**
- Titanium White = **TW**
- Mars Black = **MB**

BRUSHES & TOOLS

- Small Synthetic Round

COLOR MIXES

- Dark Brown = **MB + BS**

STEP DISCUSSION

Load the brush with **Dark Brown mix**, adding just a touch of Titanium White. Then, fill the background to the left and right of the orange sky with leafless trees. They will be moderately slim and very dark, with a few branches or alternating trunks every so often. A few may be much thicker or splintered for added variety. Rinse the brush.

Dry the surface before continuing to the next step.

STEP 3 PHOTO



If you did not understand any part of this step you can ask in the comment section of this video and I will do my best to answer.

Step 4 - Smoke Layer

Timestamp 20:51
“Light Mistiness”

PAINT

- Cadmium Red Medium = **CRM**
- Cadmium Yellow Medium = **CYM**
- Burnt Sienna = **BS**
- Mars Black = **MB**
- Titanium White = **TW**
- Golden's Acrylic Satin Glazing Liquid = **ASL**

BRUSHES & TOOLS

- Large Synthetic Oval Mop
- Small Synthetic Round

COLOR MIXES

- Warm Yellow = **CYM > CRM**
- Bright Orange = **CRM + CYM**
- Light Smoke = **TW + MB + BS > ASL**

STEP DISCUSSION

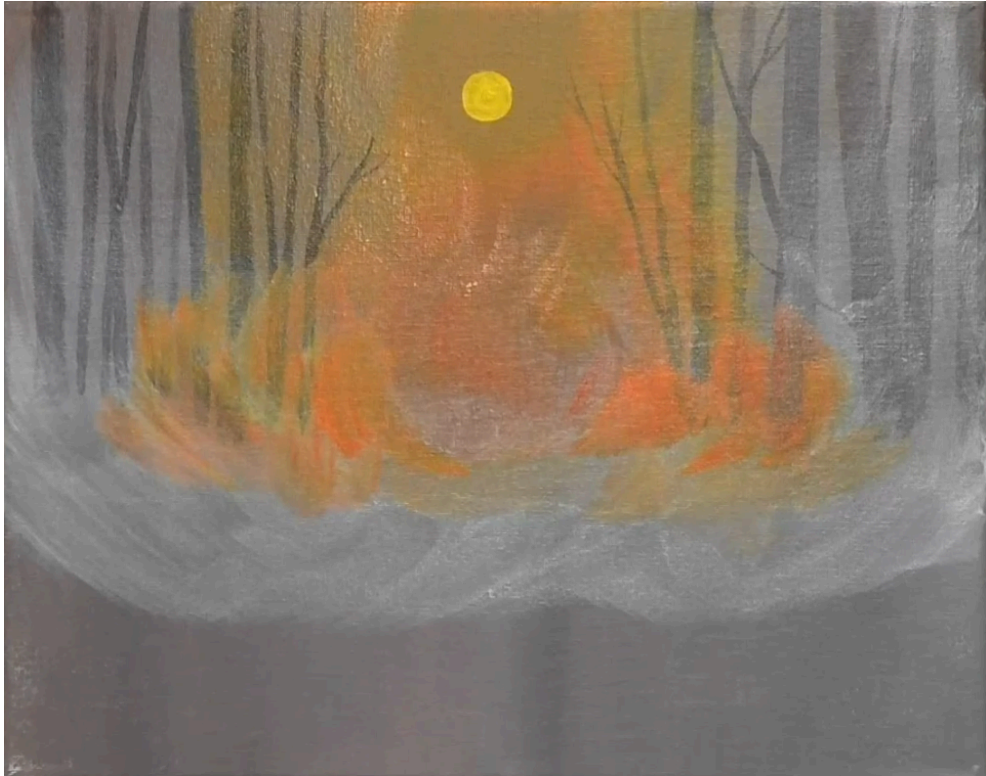
Load the Round brush with **Warm Yellow mix**, only using a hair of Cadmium Red Medium. Make a small, glowing moon in the top half of the sky. Rinse the brush.

Switch to the Oval mop, and brush the **Light Smoke mix** along the bottom of the tree line. Use small angled flick strokes as you go across the background horizontally. Blend it down and upward as well, covering the trees, and sinking into the foreground quite a bit. Rinse the brush, and switch to the Oval mop. Continue blending with the mix, leaving the middle orange background mostly uncovered while dry brushing smoke all along the trees.

Add **Bright Orange mix** to the dirty brush, and add layers of it up and down the trees near the middle. Brush it all around the orange center, having it taper off into the smoke. Rinse the brush.

Dry the surface before continuing to the next step.

STEP 4 PHOTO



If you did not understand any part of this step you can ask in the comment section of this video and I will do my best to answer.

Step 5 - Fire And Foreground

Timestamp 27:51

“Fire, Away”

PAINT

- Cadmium Red Medium = **CRM**
- Cadmium Yellow Medium = **CYM**
- Burnt Sienna = **BS**
- Mars Black = **MB**
- Titanium White = **TW**
- Golden's Acrylic Satin Glazing Liquid = **ASL**

BRUSHES & TOOLS

- Large Synthetic Oval Mop
- Small Synthetic Round

COLOR MIXES

- Dark Brown = **MB + BS**
- Light Smoke = **TW + MB + BS > ASL**

STEP DISCUSSION

Load the Round brush with pure Cadmium Yellow Medium, and very carefully add a few flares of fire at the base of a few trees near the center. Add Cadmium Red Medium to add more colors to each flame. Rinse the brush.

Switch to the Oval mop, and bias the **Dark Brown mix** with a touch of Glazing Liquid. Apply this very dark value to each of the bottom corners, adding small tufts of burnt grass as you near the smoke. Make sure these corners are filled in completely, leaving the bottom-most center of the canvas uncovered. For that, paint over it with **Light Smoke mix** and dry brush it up and around the middle of the surface. Dust it back and forth, simply adding another layer of smoke.

Add **Dark Brown mix** to the dirty brush, and make a path running through the middle of the canvas, fading into the distance. Add touches of each mix used in this step and dash it along the path for a rough, interesting effect. Rinse the brush.

Dry the surface before continuing to the next step.

STEP 5 PHOTO



If you did not understand any part of this step you can ask in the comment section of this video and I will do my best to answer.

Step 6 - Forest Glow And Trees

Timestamp 32:04
“Light Up The Night”

PAINT

- Cadmium Red Medium = **CRM**
- Cadmium Yellow Medium = **CYM**
- Mars Black = **MB**
- Titanium White = **TW**
- Golden's Acrylic Satin Glazing Liquid = **ASL**

BRUSHES & TOOLS

- Large Synthetic Oval Mop
- Small Synthetic Round
- Large Synthetic Round

COLOR MIXES

- Bright Orange = **CRM + CYM**

STEP DISCUSSION

Load the Small brush with a touch of Titanium White, and add a few highlights to the fire from before at the base of the trees. Rinse the brush.

Switch to the Oval mop and load **Bright Orange mix**, adding quite a bit of Glazing Liquid for transparency. Dry brush it all along the middle of the treeline, using a slightly upward-curved brushstroke to imply a billowing wind. Rinse the brush.

Switch to the Large round, and load a very large amount of Mars Black. Bias the mix with Glazing Liquid a bit, and make a large tree in the left area of the foreground. It will start from the dark grass patch and tower up off the canvas, with a few off-shooting branches and trunks. Make another huge tree on the right side of the foreground in a similar manner. Come back with the Small round for finer branches, a few of which will creep up over the sky.

Dry brush Mars Black all below the tree to give them a refined shadow with the Large round brush. Also make a few fallen branches on the path below the trees, switching sizes as needed. Rinse the brush.

Dry the surface before continuing to the next step.

STEP 6 PHOTO



If you did not understand any part of this step you can ask in the comment section of this video and I will do my best to answer

Step 7 - The Fire Has Spread

Timestamp 40:18

“Fire On The Forest Floor”

PAINT

- Cadmium Red Medium = **CRM**
- Cadmium Yellow Medium = **CYM**
- Mars Black = **MB**
- Titanium White = **TW**
- Golden's Acrylic Satin Glazing Liquid = **ASL**

BRUSHES & TOOLS

- Small Synthetic Round
- Medium Hog Round

COLOR MIXES

- Warm Yellow = **CYM > CRM**
- Bright Orange = **CRM + CYM**

STEP DISCUSSION

With the Synthetic brush and Mars Black, make even more fallen debris along the path. Rinse the brush.

Now, load **Warm Yellow mix** and add patches of fire on top of the debris along the ground. Also add a bunch of flames along the dark grass, up to the large dark trees. A few flames will climb up these trees as well on the sides closest to the center. Add Cadmium Red Medium and continue to develop the flames. Dry brush into the sides of the trees to give them a glowing lighting. Rinse the brush.

Then, load Titanium White thinned with a smidge of water, and wipe it off on a towel to help control the application. Add highlights to the fire, all along the debris, grass, and the base of the big trees. Rinse the brush.

Switch to the Hog brush, and continue developing the forest fire glow with **Bright Orange mix**. Focus on the dark ground between the foreground trees and the path, adding Titanium White for further highlights. Switch between each brush and mix to develop the flames until you are satisfied with the result. Rinse the brushes.

Dry the surface before continuing to the next step.

STEP 7 PHOTO



If you did not understand any part of this step you can ask in the comment section of this video and I will do my best to answer.

Step 8 - Image Transfer

Timestamp 52:32

“Figure In The Mist”

PAINT

BRUSHES & TOOLS

- Saral Paper
- Artist Tape

COLOR MIXES

STEP DISCUSSION

I chose to transfer this image and I have also provided a traceable to assist. I recommend you transfer, but there is no right or wrong way to get your image on the canvas. You can grid, transfer, or freehand, whatever makes you the most comfortable. If you are free handing, you have the picture that follows this step, and the traceable to assist you. I transferred the image with the traceable image, saral paper, and a sharp pencil.

Tape the traceable to the surface, placing the headless horseman in the middle of the path as best you can. Then, simply trace over each line on the traceable. When you are finished with the transfer, carefully untape the image and check your work.

STEP 8 PHOTO



If you did not understand any part of this step you can ask in the comment section of this video and I will do my best to answer

Step 9 - Blocking In Figure

Timestamp 54:42
“Fussily Painting”

PAINT

- Cadmium Red Medium = **CRM**
- Cadmium Yellow Medium = **CYM**
- Burnt Sienna = **BS**
- Mars Black = **MB**
- Fluid White Paint = **FWP**
- Golden's Acrylic Satin Glazing Liquid = **ASL**

BRUSHES & TOOLS

- Small Synthetic Round
- X-Small Round Liner

COLOR MIXES

STEP DISCUSSION

Load the Synthetic brush with Mars Black thinned with a bit of water. Start to very carefully paint in the far leg of the horse. Add Glazing Liquid occasionally to improve flow. Fill in the other legs of the horse as well, all the way up to the harness. Fill in the side of the jawline and neck next. Then, adding a bit of Burnt Sienna to the dirty brush, apply it to the top of the legs. Also paint it over the outside of the shoulder areas. Rinse the brush.

Switch to the Liner brush, and add a touch of Fluid White Paint into the Mars Black. Make a very fine outline across the harness below the neck. Add a bit of a highlight value to the leg, where the knees and hooves are. Rinse the brush and switch to the Synthetic brush, finishing off the brown and black blending for the fur we have painted so far. Rinse the brush.

Dry the surface before continuing to the next step.

STEP 9 PHOTO



If you did not understand any part of this step you can ask in the comment section of this video and I will do my best to answer.

Step 10 - Further Blocking In

Timestamp 1:04:22

“Fear Of The Lineart“

PAINT

- Burnt Sienna = **BS**
- Mars Black = **MB**
- Fluid White Paint = **FWP**

BRUSHES & TOOLS

- Small Synthetic Round
- X-Small Round Liner

COLOR MIXES

- Neutral Grey = **MB + FWP**

STEP DISCUSSION

Load the Synthetic brush with **Neutral Grey mix**, and paint it along the side torso area of the horse. Bias the mix with Mars Black near the front close to the shoulder. Rinse the brush.

Add a bit of Mars Black to the brush, and then fill in the back-most legs. Also fill in the saddle. Bias the mix with Fluid White Paint and highlight the saddle somewhat, getting a touch of Burnt Sienna onto the brush as you blend. Rinse the brush.

With more Mars Black, fill in its tail. Make sure it is bushy and swaying in the wind. Rinse the brush.

Switch to the Liner brush, and move on to the horseman. Begin to paint the outside of the shoes with **Neutral Grey mix**. Outline along the sides of each calf and dry brush the mix somewhat, it will look fairly faint. There are leathers in front of the legs where the stirrups connect, so leave the empty leg space below them empty to fill in later. Rinse the brush.

Then, fill in the bulk of each shoe with Mars Black. Cover the tips of the boots with Burnt Sienna. Make a top-most shine with mix, and add a black value to the bottom of each shoe. Rinse the brush.

Switch back to the Synthetic brush. Fill in the knee area with Burnt Sienna, biased with Mars Black just a smidge. Rinse the brush, and fill in the rest of the calves with Mars Black. Also fill in the space beneath the leathers, biasing the mix with Burnt Sienna a smidge. Rinse the brush.

Continue refining the legs here as well as the horse if needed.

Dry the surface before continuing to the next step.

STEP 10 PHOTO



If you did not understand any part of this step you can ask in the comment section of this video and I will do my best to answer.

Step 11 - Horse Details

Timestamp 1:15:15
“Little Bites, Breathe”

PAINT

- Burnt Sienna = **BS**
- Mars Black = **MB**
- Fluid White Paint = **FWP**
- Titanium White = **TW**

BRUSHES & TOOLS

- Small Synthetic Round
- Deerfoot Stippler
- X-Small Round Liner

COLOR MIXES

- Gravel Grey = **TW > MB + BS**

STEP DISCUSSION

If needed, use the Synthetic brush to go over any areas that need darkening, like the back leg of the horse, or sides of the legs. Rinse the brush.

Then with the Stippler, use **Gravel Grey mix** to paint small striking marks below the hooves of the horse to imply it is galloping at high speed. Add Glazing Liquid to improve flow. Load the brush unevenly with the colors in this mix and tap it along the ground below the horse. It should be a pretty chaotic mess. Rinse the brush.

Now with the Liner, use the mix to refine the lines, and fill in the space between the front legs. Rinse the brush.

Dry the surface before continuing to the next step.

STEP 11 PHOTO



If you did not understand any part of this step you can ask in the comment section of this video and I will do my best to answer.

Step 12 - Finishing Horse

Timestamp 1:20:34

“Whole Horse”

PAINT

- Cadmium Red Medium = **CRM**
- Cadmium Yellow Medium = **CYM**
- Burnt Sienna = **BS**
- Mars Black = **MB**
- Fluid White Paint = **FWP**
- Golden's Acrylic Satin Glazing Liquid = **ASL**

BRUSHES & TOOLS

- Small Synthetic Round
- X-Small Round Liner

COLOR MIXES

- Neutral Grey = **MB + FWP**
- Bright Orange = **CRM + CYM**

STEP DISCUSSION

Beginning with the Liner, very carefully mark in the eyes of the horse with Mars Black. Rinse the brush and take a bit of Cadmium Red Medium, filling each eye in. Also paint the inside nostrils. Rinse the brush. Then, with the **Neutral Grey mix**, paint the outsides of the ears, and top of the head. Darken the mix with Mars Black, and fill in the forehead of the horse. Lighten the area above the eyes, and then darken the area outside the nose. Paint the outside of the nostrils and middle bridge of the nose with this mix, and outline the sides of the face. Fill the main portion of the ears with Mars Black. Rinse the brush.

I switched to the Synthetic brush here as we fill in the rest of the head with Mars Black, mix, and a bit of Glazing Liquid. Paint all uncovered areas of the head with this dark color. Dry brush it into the nose just a bit. Rinse the brush.

Now with the Liner, add highlights to the inside of the eyes with the **Bright Orange mix**. Rinse the brush. Then with Burnt Sienna, brush it along the outside edges of the face, adding Mars Black as you blend. Add a touch of Fluid White Paint and continue shading the middle section of the face, ensuring the nose is distinctly colored from the rest. Finalize the details around the nose, eyebrow ridges around the eyes, and the values for the cheeks. Rinse the brush.

Now with the **Neutral Grey mix**, add flowing strands of hair carefully along the top of the head. It should swoop over and to the side just a bit. Rinse the brush, and continue developing the hair with Mars Black. Finish with the details along the face with these pigments. Also add Cadmium Yellow Medium highlights to the eyes and nostrils. Rinse the brush.

Dry the surface before continuing to the next step.

STEP 12 PHOTO



If you did not understand any part of this step you can ask in the comment section of this video and I will do my best to answer.

Step 13 - Blocking In Torso & Head

Timestamp 1:33:25
“Cloak And Dapper”

PAINT

- Cadmium Red Medium = **CRM**
- Mars Black = **MB**
- Burnt Sienna = **BS**

BRUSHES & TOOLS

- Small Synthetic Round

COLOR MIXES

- Dark Brown = **MB + BS**
- Blood Red = **CRM + MB**

STEP DISCUSSION

Load the brush with **Dark Brown mix** and fill in the cloak and main body of the horseman. The outside part of the cloak flowing in the wind will be biased with Burnt Sienna. Be careful as you paint the area behind the horse. The body below the cloak should be much darker than the outside, keep in mind the dimensionality here as you develop the values. Also fill in the stem of the pumpkin head with Mars Black. Rinse the brush.

Fill the head in with **Blood Red mix**. It is OK to go over the sketch below, we are going to place the features next.

Dry the surface before continuing to the next step.

STEP 13 PHOTO



If you did not understand any part of this step you can ask in the comment section of this video and I will do my best to answer.

Step 14 - Pumpkin Head & Highlights

Timestamp 1:38:34

“Paint It Out”

PAINT

- Cadmium Red Medium = **CRM**
- Cadmium Yellow Medium = **CYM**
- Burnt Sienna = **BS**
- Mars Black = **MB**
- Fluid White Paint = **FWP**

BRUSHES & TOOLS

- Small Synthetic Round
- X-Small Round Liner

COLOR MIXES

- Bright Orange = **CRM + CYM**
- Neutral Grey = **MB + FWP**
- Blood Red = **CRM + MB**

STEP DISCUSSION

Load the Liner with **Bright Orange mix**, and start to add highlights around the head. Keep in mind the dimensionality of the head as you paint, curving the brush around the spherical shape. Continue until most of the head is filled in, and highlight further with Cadmium Yellow Medium. Add Mars Black to the mix, also bringing **Blood Red mix** into it. Add the four or so pumpkin ridge lines going down and around the head. Blend these crevices in with **Bright Orange mix** and continue shading the pumpkin. Rinse the brush.

Paint a darker shadow below the head with **Neutral Grey mix**. Add a bit of Burnt Sienna to the brush, and paint a line down the middle torso of the horseman, also giving the side of the cowl a bit of a highlight mark. Add small buttons down the middle of the torso. Rinse the brush.

Switch back to the Synthetic brush and load Burnt Sienna, taking this time to finish refining the cloak. Add Mars Black for shadows, and pure Burnt Sienna for light values. Continue blending until you are satisfied. Rinse the brush.

Once more with the Liner, use Mars Black to place the facial features. Make two triangles for eyes on either side of the head, with a triangle nose in the middle, slightly below them. Then make a squiggly, jagged smile across the face. Rinse the brush.

Fill the insides of each hole with **Blood Red mix**. Add a bit of pure Cadmium Red Medium in the middle of each for sinister glows. Rinse the brush.

Dry the surface before continuing to the next step.

STEP 14 PHOTO



If you did not understand any part of this step you can ask in the comment section of this video and I will do my best to answer.

Step 15 - A Ghoulish Glow

Timestamp 1:49:22

“Happy Halloween”

PAINT

- Cadmium Red Medium = **CRM**
- Cadmium Yellow Medium = **CYM**
- Fluid White Paint = **FWP**

BRUSHES & TOOLS

- X-Small Round Liner

COLOR MIXES

- Bright Orange = **CRM + CYM**

STEP DISCUSSION

Highlight the facial features with the **Bright Orange mix**. Rinse the brush, and then highlight the outside edge of the head with Fluid White Paint and a smidge of Cadmium Yellow Medium. Make sure to do the pumpkin stem too. Rinse the brush.

Then with just Cadmium Yellow Medium, finish the glow in the eyes, nose, and mouth. Rinse the brush. Top it off with Fluid White Paint to illuminate the glow. Rinse the brush.

Sign.

STEP 15 PHOTO



If you did not understand any part of this step you can ask in the comment section of this video and I will do my best to answer.

Traceable

